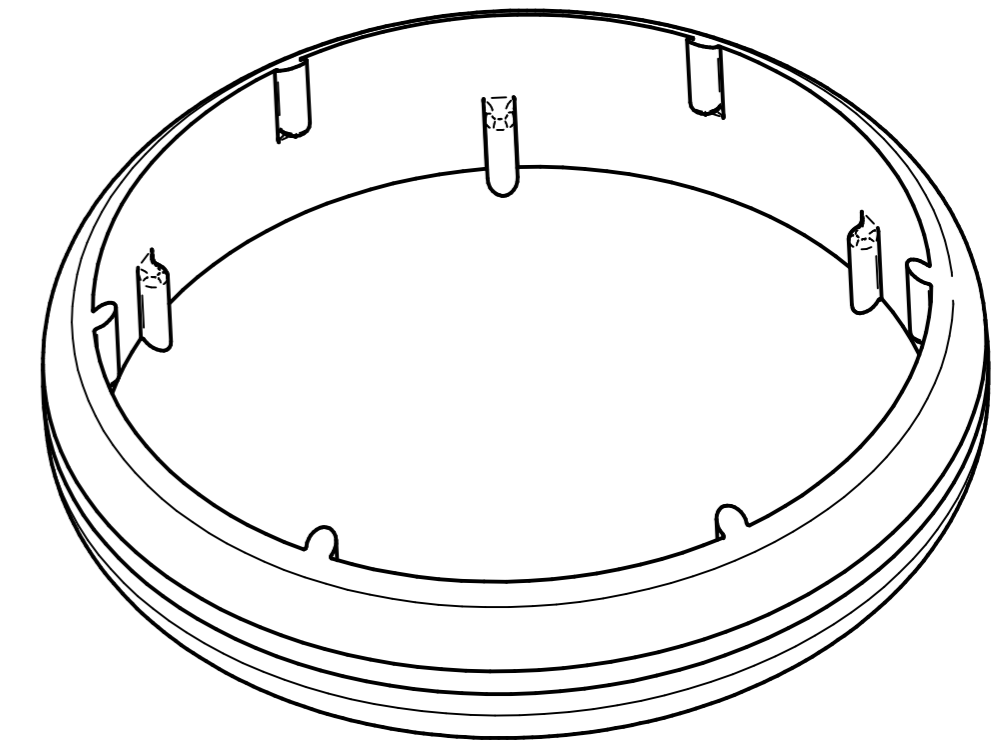
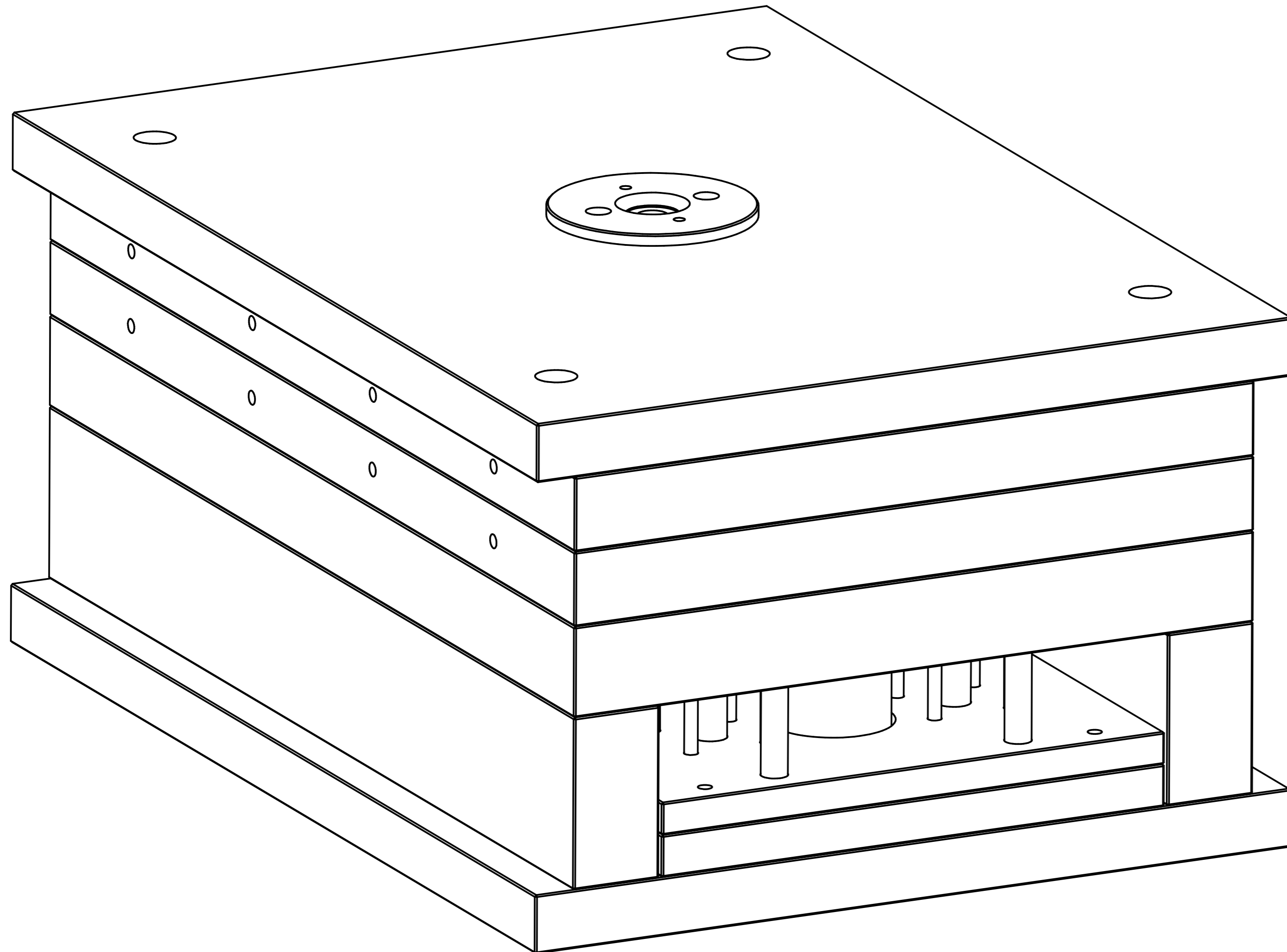
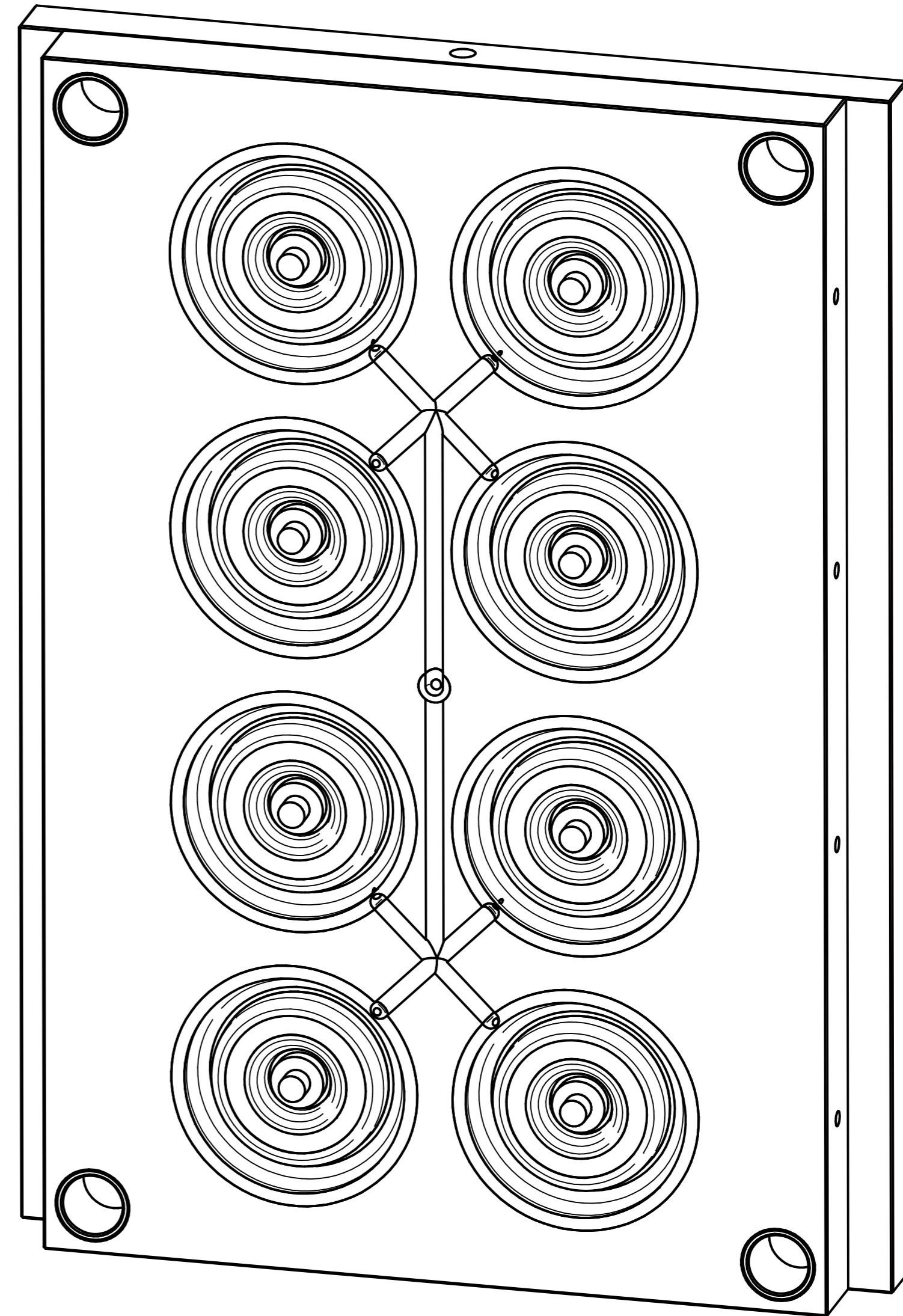
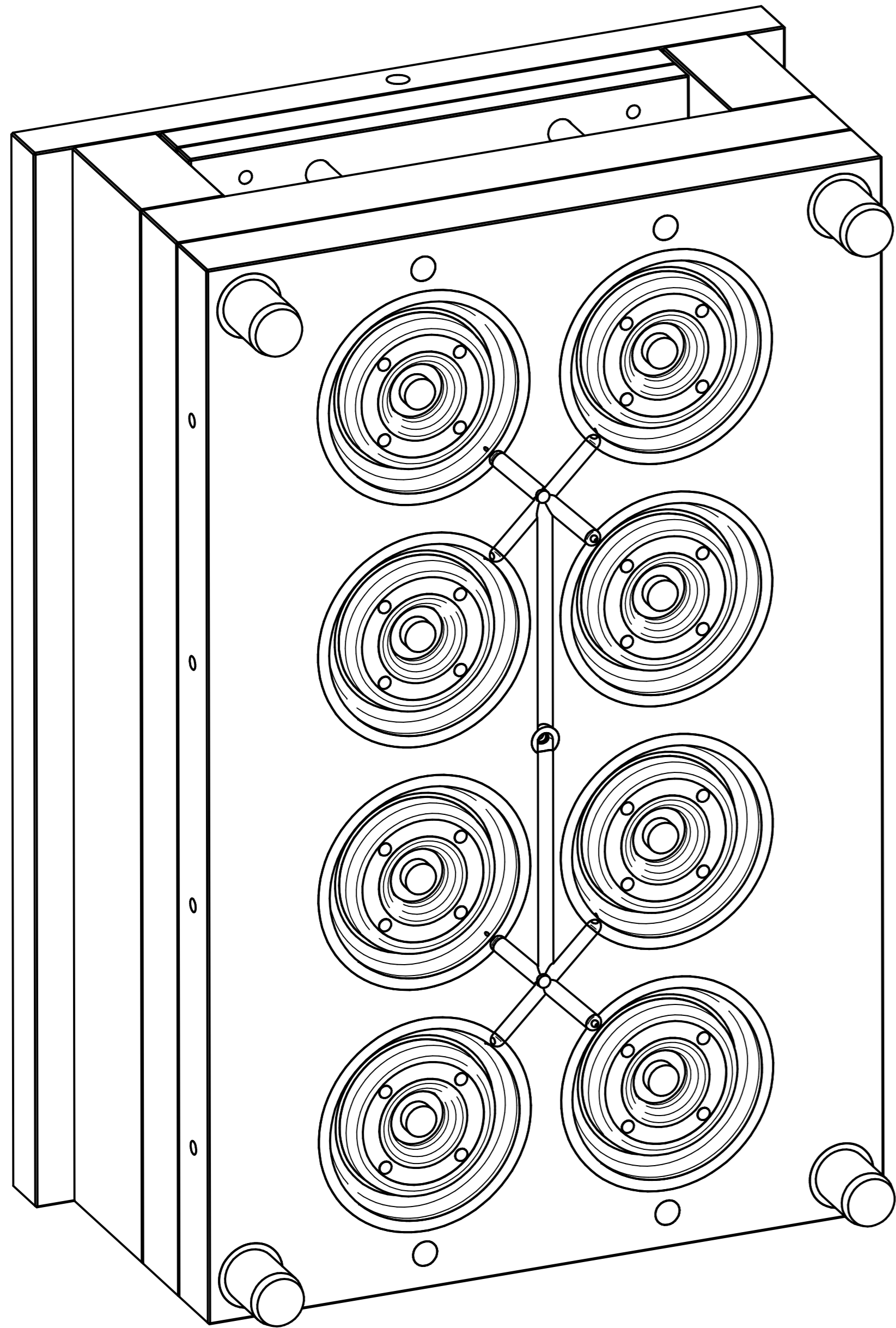


REVISION HISTORY			
REV	DESCRIPTION	DATE	APPROVED



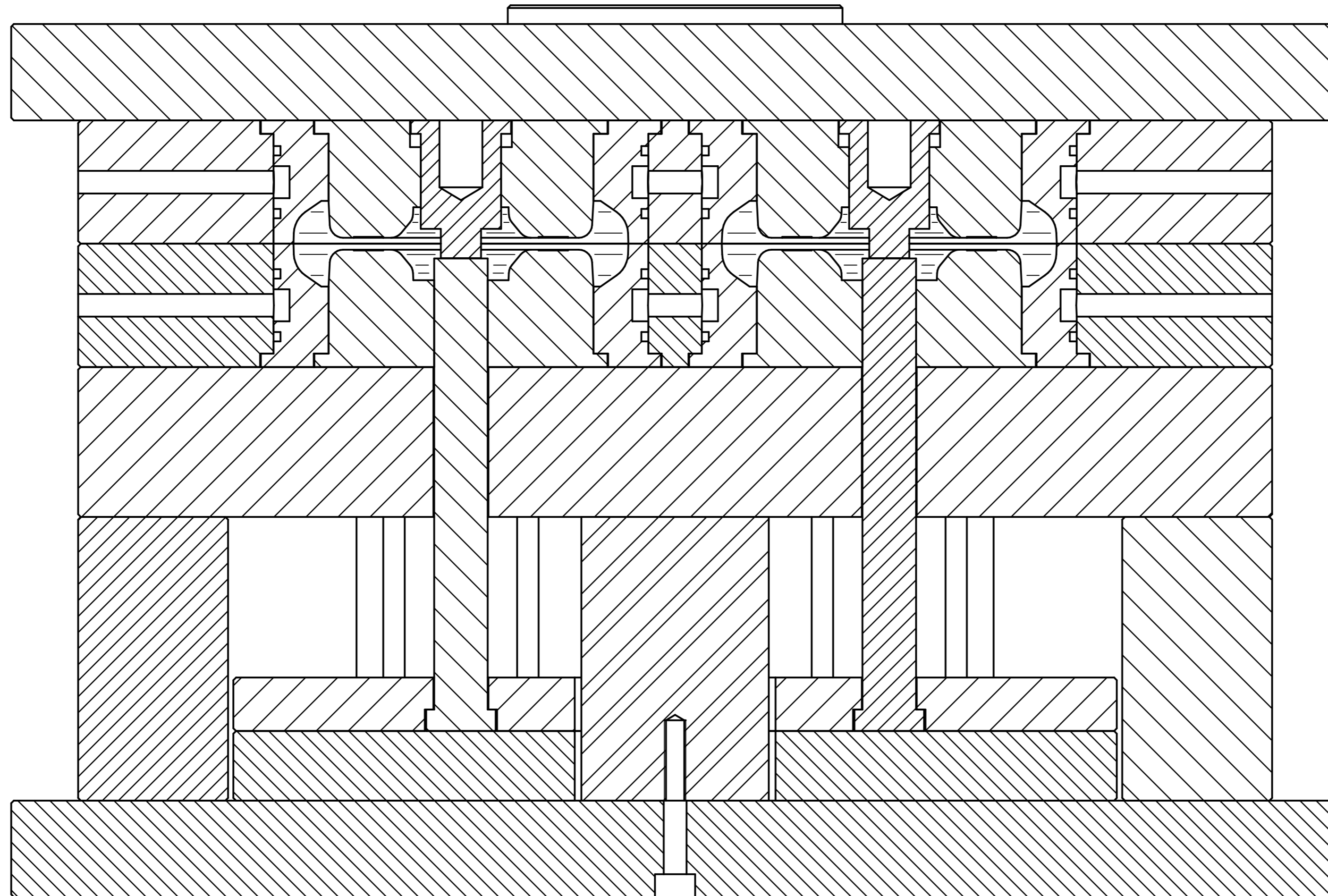
	NAME	DATE	<b>PREMAC</b>	
DRAWN	Dan	05/22/18		
APPROVED				
MATERIAL				
TREATMENT			TITLE	
UNLESS OTHERWISE SPECIFIED DIMENSIONS ARE IN MILLIMETERS ANGLES ±0.1°			SIZE A4	DWG NO
1st ANGLE 			FILE NAME: PJP125X32 WC-ND Tyre Mould.dft	
2 PL ±0.02 3 PL ±0.005			SCALE:	WEIGHT:
			SHEET 1 OF 7	

REVISION HISTORY			
REV	DESCRIPTION	DATE	APPROVED



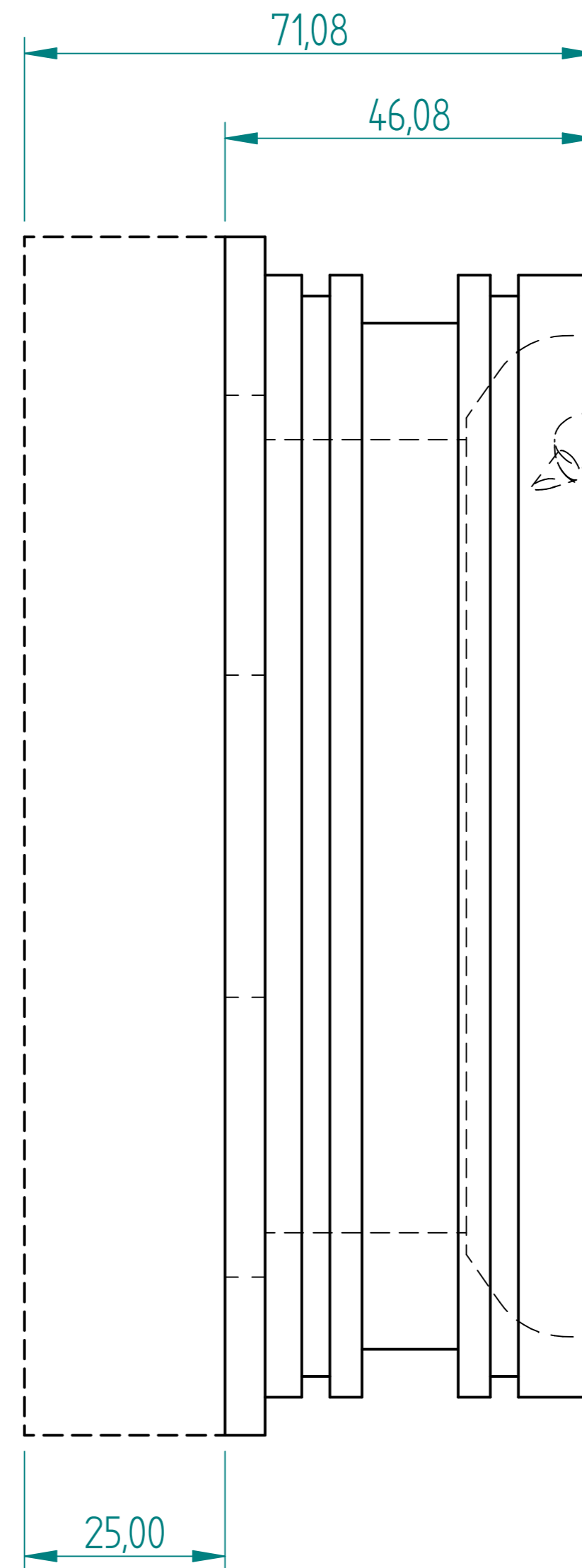
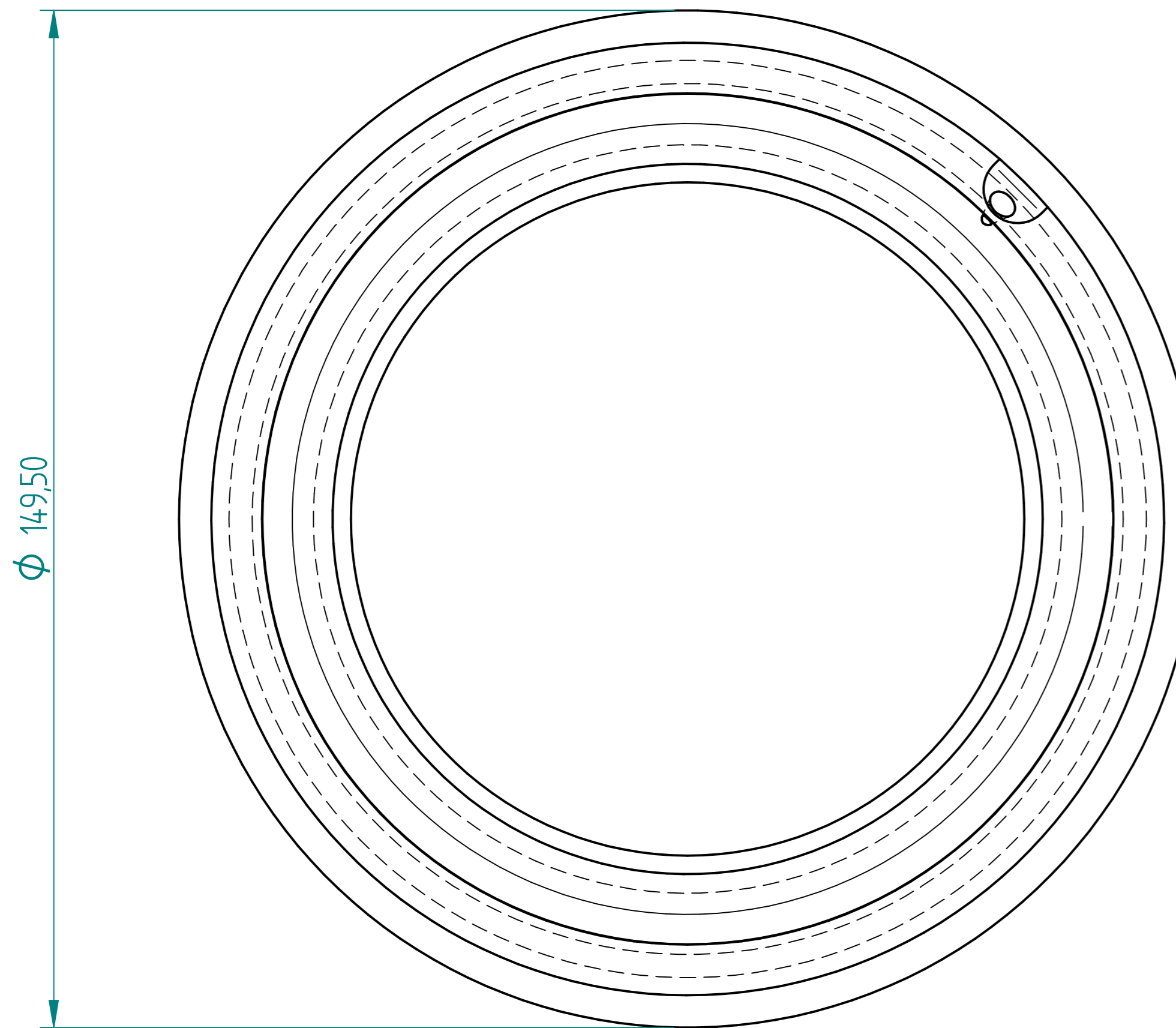
DRAWN	NAME	DATE	<b>PREMAC</b>		
APPROVED	Dan	05/22/18			
MATERIAL					
TREATMENT					
UNLESS OTHERWISE SPECIFIED DIMENSIONS ARE IN MILLIMETERS ANGLES ±0.1°			SIZE A4	DWG NO	REV
1st ANGLE 2 PL ±0.02 3 PL ±0.005			FILE NAME: PJP125X32 WC-ND Tyre Mould.dft		
			SCALE:	WEIGHT:	SHEET 2 OF 7

REVISION HISTORY			
REV	DESCRIPTION	DATE	APPROVED



	NAME	DATE	<b>PREMAC</b>	
DRAWN	Dan	05/22/18		
APPROVED				
MATERIAL				
TREATMENT			TITLE	
UNLESS OTHERWISE SPECIFIED DIMENSIONS ARE IN MILLIMETERS			SIZE A4	DWG NO
1st ANGLE ANGLES ±0.1°			FILE NAME: PJP125X32 WC-ND Tyre Mould.dft	REV
2 PL ±0.02 3 PL ±0.005			SCALE:	WEIGHT:
			SHEET 3 OF 7	

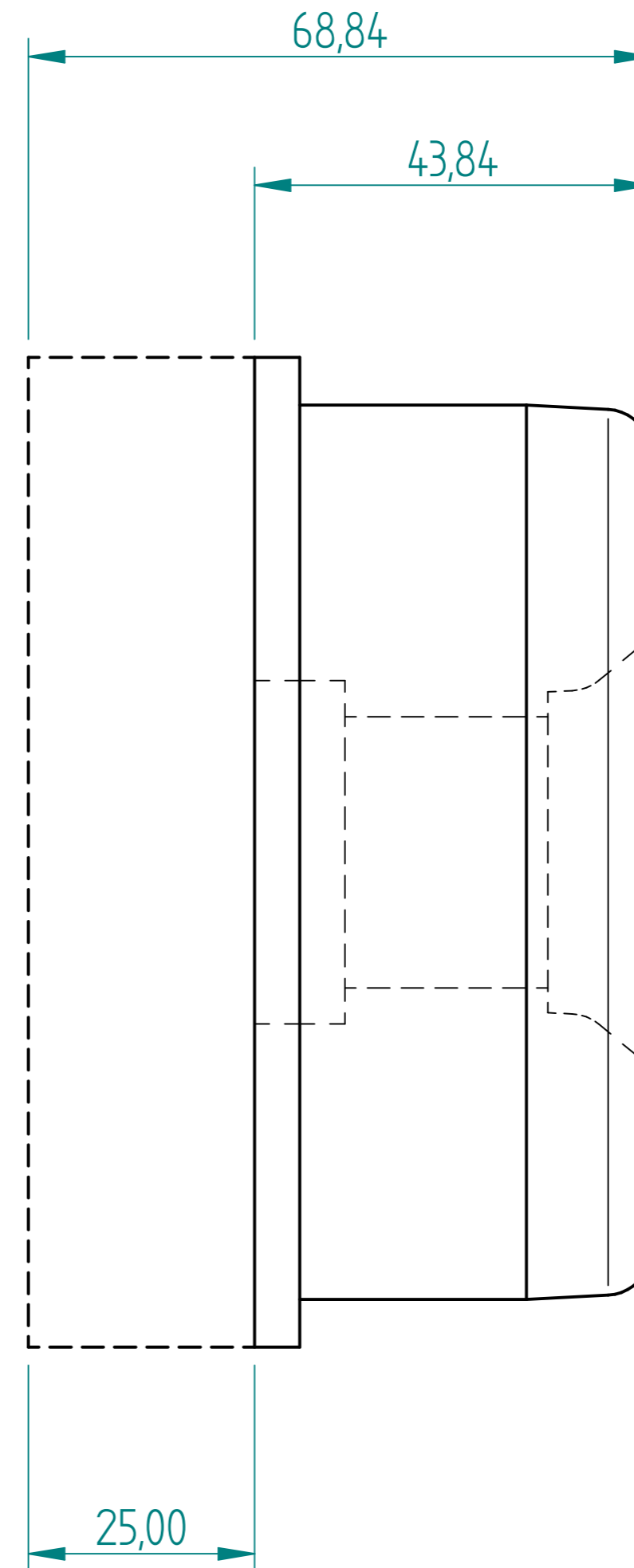
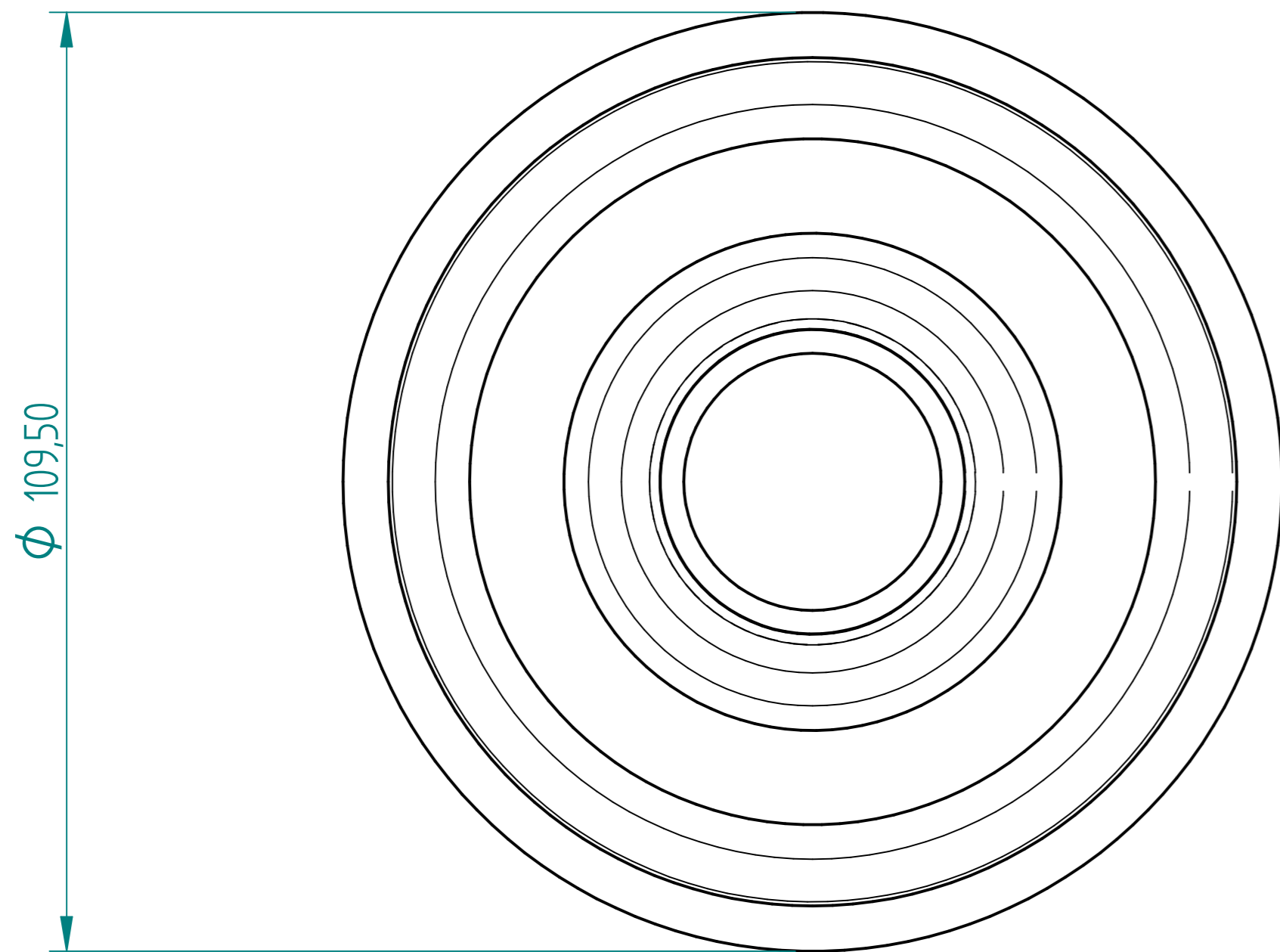
REVISION HISTORY			
REV	DESCRIPTION	DATE	APPROVED



FH and MH TYRE OUTER INSERT  
 16 OFF  
 R1 000 each

DRAWN	NAME	DATE	<b>PREMAC</b>		
APPROVED	Dan	05/22/18			
MATERIAL					
TREATMENT					
UNLESS OTHERWISE SPECIFIED DIMENSIONS ARE IN MILLIMETERS			SIZE A4	DWG NO	REV
1 <sup>ST</sup> ANGLE ANGLES ±0.1°			FILE NAME: PJP125X32 WC-ND Tyre Mould.dft		
2 PL ±0.02 3 PL ±0.005			SCALE:	WEIGHT:	SHEET 4 OF 7

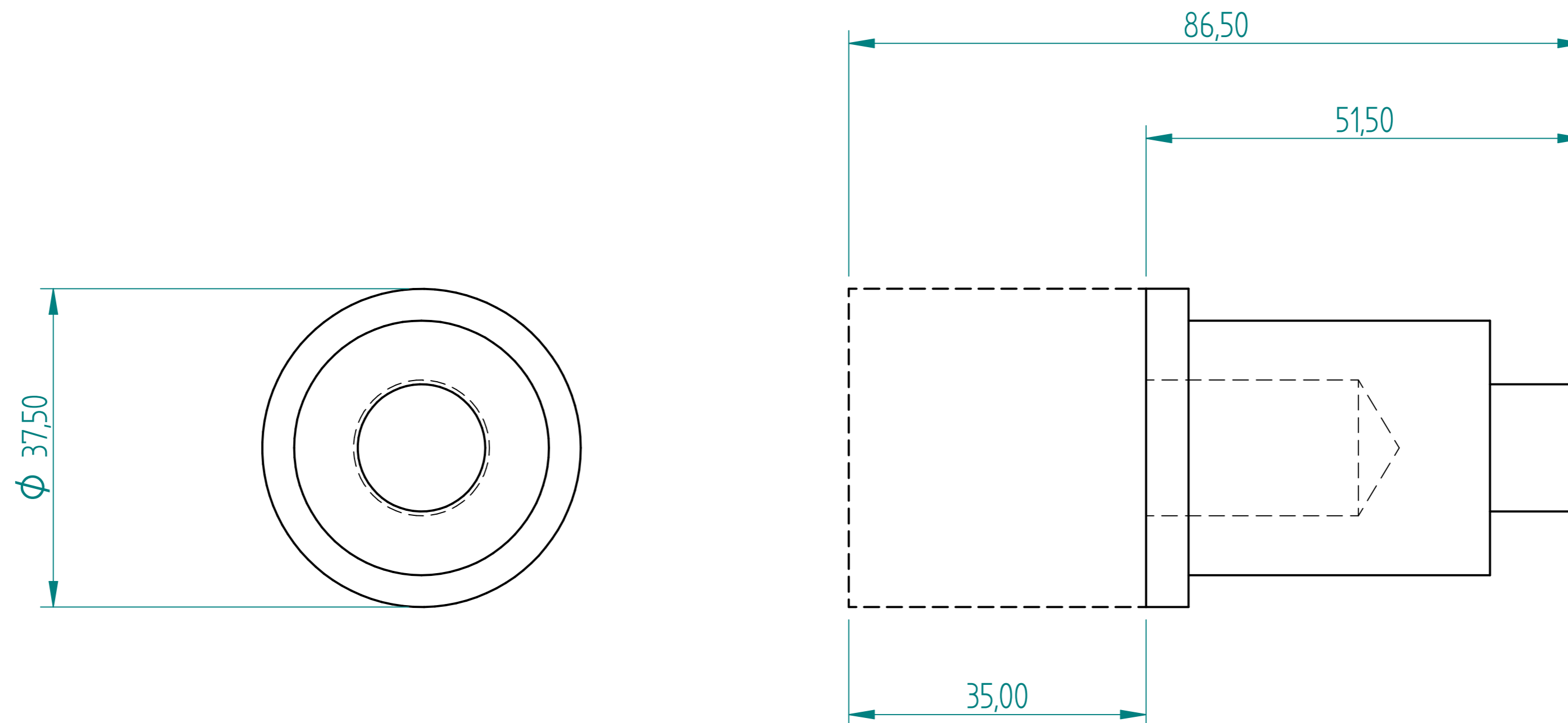
REVISION HISTORY			
REV	DESCRIPTION	DATE	APPROVED



FH and MH TYRE INNER INSERT  
 16 OFF  
 Only the inner bores differs  
 R750 each

	NAME	DATE	<b>PREMAC</b>	
DRAWN	Dan	05/22/18		
APPROVED				
MATERIAL				
TREATMENT			TITLE	
UNLESS OTHERWISE SPECIFIED DIMENSIONS ARE IN MILLIMETERS			SIZE A4	DWG NO
1st ANGLE ANGLES ±0.1°			FILE NAME: PJP125X32 WC-ND Tyre Mould.dft	
2 PL ±0.02 3 PL ±0.005			SCALE:	WEIGHT:
			SHEET 5 OF 7	

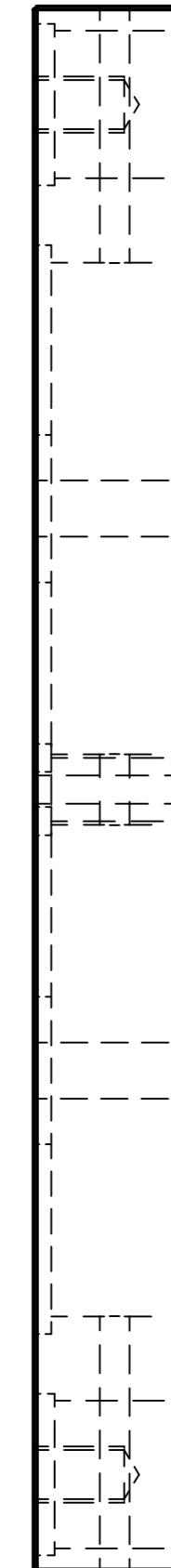
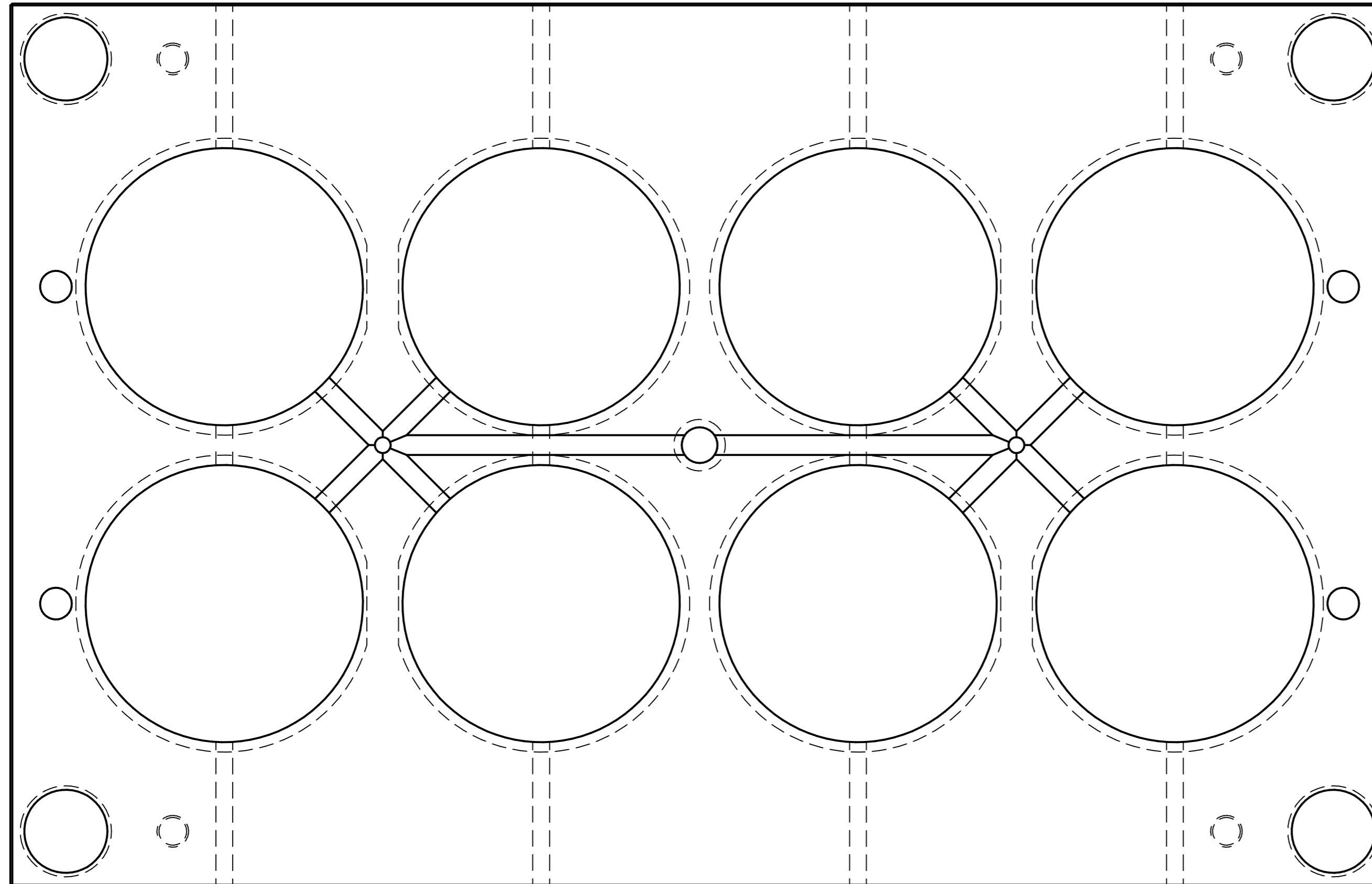
REVISION HISTORY			
REV	DESCRIPTION	DATE	APPROVED



FH TYRE LOCATING INSERT  
8 off  
R300 each

	NAME	DATE	<b>PREMAC</b>	
DRAWN	Dan	05/22/18		
APPROVED				
MATERIAL				
TREATMENT			TITLE	
UNLESS OTHERWISE SPECIFIED DIMENSIONS ARE IN MILLIMETERS			SIZE A4	DWG NO
1 <sup>ST</sup> ANGLE ANGLES ±0.1°			FILE NAME: PJP125X32 WC-ND Tyre Mould.dft	
2 PL ±0.02 3 PL ±0.005			SCALE:	WEIGHT:
			SHEET 6 OF 7	

REVISION HISTORY			
REV	DESCRIPTION	DATE	APPROVED



MH and FH DIE PLATES  
 BOTH SIDES AND WATER  
 R7 000 each

	NAME	DATE	<b>PREMAC</b>	
DRAWN	Dan	05/22/18		
APPROVED			TITLE	
MATERIAL				
TREATMENT				
UNLESS OTHERWISE SPECIFIED <small>1st ANGLE</small> DIMENSIONS ARE IN MILLIMETERS ANGLES ±0.1°			SIZE A4	DWG NO
2 PL ±0.02 3 PL ±0.005			FILE NAME: PJP125X32 WC-ND Tyre Mould.dft	REV
			SCALE:	WEIGHT:
			SHEET 7 OF 7	