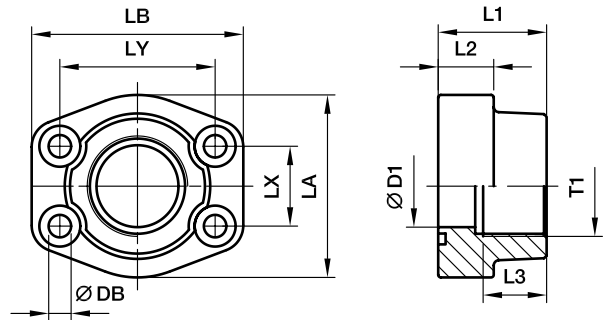


**PFF-G SAE Straight 4 bolt flange with BSPP thread**

 SAE Flange / Female BSPP thread  
 (ISO 6162-1/-2) (ISO 1179-1)

**3000 PSI Series**

Nom. flange size		T1	D1	L1	L2	L3	LA	LB	LX	LY	DB	Screws		Weight (steel) kg/piece	Order code*	PN (bar) <sup>1)</sup>	
SAE (in)	ISO (DN)											(metr.)	(unc.)			S	SS
1/2	13	<b>G3/8</b>	13	36	16	13	46	58	17.5	38.1	9.0	M 8×30	5/16×1 1/4	0.25	<b>PFF32G38</b>	345	345
1/2	13	<b>G1/2</b>	13	36	16	15	46	58	17.5	38.1	9.0	M 8×30	5/16×1 1/4	0.28	<b>PFF32G</b>	345	345
3/4	19	<b>G3/4</b>	19	36	18	18	49	66	22.3	47.6	10.5	M10×35	3/8×1 1/2	0.39	<b>PFF33G</b>	345	345
1	25	<b>G1</b>	25	38	18	20	53	71	26.2	52.4	10.5	M10×35	3/8×1 1/2	0.46	<b>PFF34G</b>	345	345
1 1/4	32	<b>G1 1/4</b>	31	41	21	22	69	80	30.2	58.7	10.5	M10×40	7/16×1 1/2	0.66	<b>PFF35G</b>	276	276
1 1/2	38	<b>G1 1/2</b>	38	44	25	24	77	94	35.7	69.9	13.5	M12×45	1/2×1 3/4	1.05	<b>PFF36G</b>	207	207
2	51	<b>G2</b>	50	45	25	26	89	103	42.9	77.8	13.5	M12×45	1/2×1 3/4	1.19	<b>PFF38G</b>	207	207
2 1/2	64	<b>G2 1/2</b>	63	50	25	30	101	115	50.8	88.9	13.5	M12×45	1/2×1 3/4	1.40	<b>PFF310G</b>	172	172
3	76	<b>G3</b>	73	50	27	30	124	135	61.9	106.4	17.0	M16×50	5/8×2	2.15	<b>PFF312G</b>	138	138
3 1/2	89	<b>G3 1/2</b>	89	50	27	30	136	152	61.9	120.7	17.0	M16×50	5/8×2	2.40	<b>PFF314G</b>	34	34
4	102	<b>G4</b>	99	50	27	30	146	162	77.8	130.2	17.0	M16×50	5/8×2	2.85	<b>PFF316G</b>	34	34
5	127	<b>G5</b>	120	50	28	30	180	184	92.1	152.4	17.0	M16×50	5/8×2	3.25	<b>PFF320G</b>	34	34

**6000 PSI Series**

1/2	13	<b>G3/8</b>	13	36	16	13	46	58	18.2	40.5	9.0	M 8×30	5/16×1 1/4	0.26	<b>PFF62G38</b>	420	420
1/2	13	<b>G1/2</b>	13	36	16	15	46	58	18.2	40.5	9.0	M 8×30	5/16×1 1/4	0.29	<b>PFF62G</b>	420	420
3/4	19	<b>G3/4</b>	19	36	19	18	53	71	23.8	50.8	10.5	M10×35	3/8×1 1/2	0.50	<b>PFF63G</b>	420	420
1	25	<b>G1</b>	25	44	24	20	69	80	27.8	57.2	10.5	M12×45	1/2×1 3/4	0.76	<b>PFF64G</b>	420	420
1 1/4	32	<b>G1 1/4</b>	31	44	27	22	77	94	31.8	66.6	15.0	M14×45	1/2×1 3/4	1.20	<b>PFF65G</b>	420	420
1 1/2	38	<b>G1 1/2</b>	38	51	30	24	89	106	36.5	79.3	17.0	M16×50	5/8×2	1.65	<b>PFF66G</b>	420	420
2	51	<b>G2</b>	50	70	37	33	116	135	44.5	96.8	21.0	M20×65	3/4×2 1/2	2.45	<b>PFF68G</b>	420	420
2 1/2	64	<b>G2 1/2</b>	63	75	45	35	150	166	58.7	123.8	25.0	M24×85	–	3.05	<b>PFF610G</b>	420	420
3	76	<b>G3</b>	73	90	55	40	178	208	71.4	152.4	32.0	M30×110	–	3.45	<b>PFF612G</b>	420	420

1) Pressure shown = Item deliverable

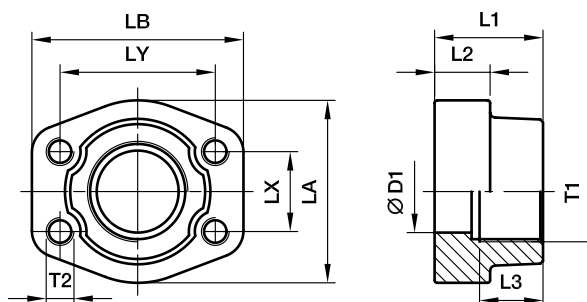
$$\frac{\text{PN (bar)}}{10} = \text{PN (MPa)}$$

\*Please add the suffixes below according to the material / surface required.

Order code suffixes					
Material	Suffix surface and material	Example only 4 bolt flange	Example 4 bolt flange incl. metr. screws and O-ring	Example 4 bolt flange incl. UNC screws and O-ring	Standard sealing material (no additional suffix needed)
Steel, blanc oil dipped	S	PFF32G38S	PFF32G38SM	PFF32G38SU	
Stainless steel	SS	PFF32G38SS	PFF32G38SSM	PFF32G38SSU	VIT

## PCFF-G SAE Straight 4 bolt flange with BSPP thread

SAE Counter flange / Female BSPP thread  
(ISO 6162-1/-2) (ISO 1179-1)


**3000 PSI Series**

Nom. flange size		T1	D1	L1	L2	L3	LA	LB	LX	LY	T2		Weight (steel) kg/piece	Order code*	PN (bar) <sup>1)</sup>	
SAE (in)	ISO (DN)										(metr.)	(unc.)			S	SS
1/2	13	<b>G3/8</b>	13	36	16	19	46	58	17.5	38.1	M 8	5/16	0.25	<b>PCFF32G38</b>	345	345
1/2	13	<b>G1/2</b>	13	36	16	19	46	58	17.5	38.1	M 8	5/16	0.28	<b>PCFF32G</b>	345	345
3/4	19	<b>G3/4</b>	19	36	18	19	49	66	22.3	47.6	M10	3/8	0.39	<b>PCFF33G</b>	345	345
1	25	<b>G1</b>	25	38	18	19	53	71	26.2	52.4	M10	3/8	0.46	<b>PCFF34G</b>	345	345
1 1/4	32	<b>G1 1/4</b>	31	41	21	22	69	80	30.2	58.7	M10	7/16	0.66	<b>PCFF35G</b>	276	276
1 1/2	38	<b>G1 1/2</b>	38	44	25	24	77	94	35.7	69.9	M12	1/2	1.05	<b>PCFF36G</b>	207	207
2	51	<b>G2</b>	50	45	25	26	89	103	42.9	77.8	M12	1/2	1.19	<b>PCFF38G</b>	207	207
2 1/2	64	<b>G2 1/2</b>	63	50	25	30	101	115	50.8	88.9	M12	1/2	1.40	<b>PCFF310G</b>	172	172
3	76	<b>G3</b>	73	50	27	30	124	135	61.9	106.4	M16	5/8	2.15	<b>PCFF312G</b>	138	138
3 1/2	89	<b>G3 1/2</b>	89	50	27	30	136	152	69.9	120.7	M16	5/8	2.40	<b>PCFF314G</b>	34	34
4	102	<b>G4</b>	99	50	27	30	146	162	77.8	130.2	M16	5/8	2.85	<b>PCFF316G</b>	34	34
5	127	<b>G5</b>	120	50	28	30	180	184	92.1	152.4	M16	5/8	3.25	<b>PCFF320G</b>	34	34

**6000 PSI Series**

1/2	13	<b>G3/8</b>	13	36	16	19	46	58	18.2	40.5	M 8	5/16	0.26	<b>PCFF62G38</b>	420	420
1/2	13	<b>G1/2</b>	13	36	16	19	46	58	18.2	40.5	M 8	5/16	0.29	<b>PCFF62G</b>	420	420
3/4	19	<b>G3/4</b>	19	36	19	22	53	71	23.8	50.8	M10	3/8	0.50	<b>PCFF63G</b>	420	420
1	25	<b>G1</b>	25	44	24	24	69	80	27.8	57.2	M12	7/16	0.76	<b>PCFF64G</b>	420	420
1 1/4	32	<b>G1 1/4</b>	31	44	27	25	77	94	31.8	66.6	M14	1/2	1.20	<b>PCFF65G</b>	420	420
1 1/2	38	<b>G1 1/2</b>	38	51	30	28	89	106	36.5	79.3	M16	5/8	1.65	<b>PCFF66G</b>	420	420
2	51	<b>G2</b>	50	70	37	33	116	135	44.5	96.8	M20	3/4	2.45	<b>PCFF68G</b>	420	420
2 1/2	64	<b>G2 1/2</b>	63	75	45	35	150	166	58.7	123.8	M24	-	3.05	<b>PCFF610G</b>	420	420
3	76	<b>G3</b>	73	90	55	40	178	208	71.4	152.4	M30	-	3.45	<b>PCFF612G</b>	420	420

<sup>1)</sup> Pressure shown = Item deliverable

$$\frac{PN \text{ (bar)}}{10} = PN \text{ (MPa)}$$

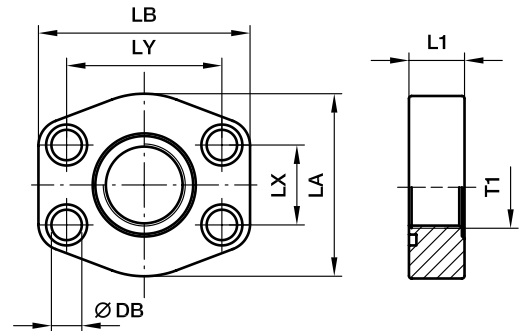
\*Please add the suffixes below according to the material / surface required.

Order code suffixes				
Material	Suffix surface and material	Example 4 bolt flange with metr. threads	Example 4 bolt flange with UNC threads	Standard sealing material (no additional suffix needed)
Steel, blanc oil dipped	S	PCFF32G38SM	PCFF32G38SU	NBR
Stainless steel	SS	PCFF32G38SSM	PCFF32G38SSU	VIT

**PAFSF-G SAE Straight 4 bolt flange flat with BSPP thread**

 SAE Flange / Female BSPP thread  
 (ISO 6162-1/-2) (ISO 1179-1)

only for low pressure applications


**3000 PSI Series**

Nom. flange size		T1	L1	LA	LB	LX	LY	DB	Screws		Weight (steel) kg/piece	Order code*	PN (bar) <sup>1)</sup>	
SAE (in)	ISO (DN)								(metr.)	(unc.)			S	SS
1/2	13	G3/8	16	46	58	17.5	38.1	9.0	M 8×30	5/16×1 1/4	0.20	PAFSF080G38	40	40
1/2	13	G1/2	16	46	58	17.5	38.1	9.0	M 8×30	5/16×1 1/4	0.27	PAFSF080G	40	40
3/4	19	G1/2	18	49	66	22.3	47.6	10.5	M10×35	3/8×1 1/2	0.29	PAFSF100G12	40	40
3/4	19	G3/4	18	49	66	22.3	47.6	10.5	M10×35	3/8×1 1/2	0.27	PAFSF100G	40	40
1	25	G3/4	19	53	71	26.2	52.4	10.5	M10×35	3/8×1 1/2	0.32	PAFSF102G34	40	40
1	25	G1	19	53	71	26.2	52.4	10.5	M10×35	3/8×1 1/2	0.31	PAFSF102G	40	40
1 1/4	32	G1	21	69	80	30.2	58.7	10.5	M10×35	7/16×1 1/2	0.44	PAFSF104G1	40	40
1 1/4	32	G1 1/4	21	69	80	30.2	58.7	10.5	M10×35	7/16×1 1/2	0.56	PAFSF104G	40	40
1 1/2	38	G1 1/4	24	77	95	35.7	69.9	13.5	M12×45	1/2×1 3/4	0.83	PAFSF106G114	40	40
1 1/2	38	G1 1/2	24	77	95	35.7	69.9	13.5	M12×45	1/2×1 3/4	0.76	PAFSF106G	40	40
2	51	G1 1/2	24	89	103	42.9	77.8	13.5	M12×45	1/2×1 3/4	1.00	PAFSF108G112	40	40
2	51	G2	24	89	103	42.9	77.8	13.5	M12×45	1/2×1 3/4	0.90	PAFSF108G	40	40
2 1/2	64	G2	25	101	116	50.8	88.9	13.5	M12×45	1/2×1 3/4	1.30	PAFSF110G2	40	40
2 1/2	64	G2 1/2	25	101	116	50.8	88.9	13.5	M12×45	1/2×1 3/4	1.25	PAFSF110G	40	40
3	76	G2 1/2	25	124	136	61.9	106.4	17.0	M16×50	5/8×2	1.86	PAFSF112G212	30	30
3	76	G3	25	124	136	61.9	106.4	17.0	M16×50	5/8×2	1.49	PAFSF112G	30	30
3 1/2	89	G3	25	136	152	69.9	120.7	17.0	M16×50	5/8×2	1.68	PAFSF114G3	30	30
3 1/2	89	G3 1/2	25	136	152	69.9	120.7	17.0	M16×50	5/8×2	1.59	PAFSF114G	30	30
4	102	G3 1/2	25	146	162	77.8	130.2	17.0	M16×50	5/8×2	2.35	PAFSF116G312	30	30
4	102	G4	25	146	162	77.8	130.2	17.0	M16×50	5/8×2	2.25	PAFSF116G	30	30
5	127	G4	25	180	184	92.1	152.4	17.0	M16×50	5/8×2	3.45	PAFSF118G4	30	30
5	127	G5	25	180	184	92.1	152.4	17.0	M16×50	5/8×2	3.15	PAFSF118G	30	30

**6000 PSI Series**

1/2	13	G3/8	16	46	58	18.2	40.5	9.0	M 8×30	5/16×1 1/4	0.25	PAFSF401G38	40	40
1/2	13	G1/2	16	46	58	18.2	40.5	9.0	M 8×30	5/16×1 1/4	0.20	PAFSF401G	40	40
3/4	19	G1/2	19	53	71	23.8	50.8	10.5	M10×35	3/8×1 1/2	0.37	PAFSF402G12	40	40
3/4	19	G3/4	19	53	71	23.8	50.8	10.5	M10×35	3/8×1 1/2	0.36	PAFSF402G	40	40
1	25	G3/4	24	66	80	27.8	57.2	13.5	M12×45	7/16×1 1/2	0.64	PAFSF403G34	40	40
1	25	G1	24	66	80	27.8	57.2	13.5	M12×45	7/16×1 1/2	0.60	PAFSF403G	40	40
1 1/4	32	G1	27	77	94	31.8	66.6	15.0	M14×50	1/2×1 3/4	0.88	PAFSF404G1	40	40
1 1/4	32	G1 1/4	27	77	94	31.8	66.6	15.0	M14×50	1/2×1 3/4	0.87	PAFSF404G	40	40
1 1/2	38	G1 1/4	30	89	103	36.5	79.3	17.0	M16×55	5/8×2	1.14	PAFSF405G114	40	40
1 1/2	38	G1 1/2	30	89	103	36.5	79.3	17.0	M16×55	5/8×2	1.01	PAFSF405G	40	40
2	51	G1 1/2	35	123	135	44.5	96.8	21.0	M20×65	3/4×2 1/2	2.94	PAFSF406G112	40	40
2	51	G2	35	123	135	44.5	96.8	21.0	M20×65	3/4×2 1/2	2.84	PAFSF406G	40	40

\*Please add the suffixes below according to the material / surface required.

Order code suffixes					
Material	Suffix surface and material	Example only 4 bolt flange	Example 4 bolt flange incl. metr. screws and O-ring	Example 4 bolt flange incl. UNC screws and O-ring	Standard sealing material (no additional suffix needed)
Steel, blanc oil dipped	S	PAFSF080GS	PAFSF080GSM	PAFSF080GSU	NBR
Stainless steel	SS	PAFSF080GSS	PAFSF080GSSM	PAFSF080GSSU	VIT

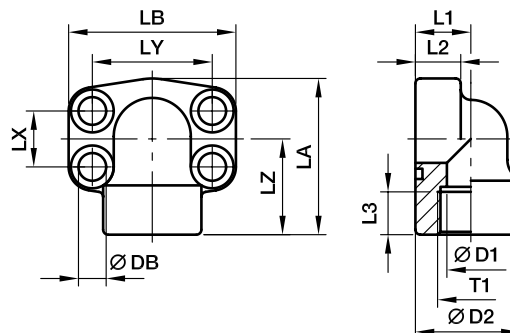
1) Pressure shown = Item deliverable

$$\frac{\text{PN (bar)}}{10} = \text{PN (MPa)}$$

## SAE 4 Bolt flanges

### PEFF-G SAE 90° 4 bolt flange with BSPP thread

SAE 90° Flange / Female BSPP thread  
(ISO 6162-1/-2) (ISO 1179-1)



#### 3000 PSI Series

Nom. flange size		T1	D1	D2	L1	L2	L3	LA	LB	LX	LY	LZ	DB	Screws		Weight (steel) kg/piece	Order code*	PN (bar) <sup>1)</sup>	
SAE (in)	ISO (DN)													(metr.)	(unc.)			S	SS
1/2	13	<b>G1/2</b>	13	34.0	18	16	16	59	57	17.5	38.1	36	9.0	M 8×30	5/16×1 1/4	0.35	<b>PEFF32G</b>	348	348
3/4	19	<b>G3/4</b>	19	38.5	22	18	19	63	68	22.3	47.6	38	10.5	M10×35	3/8×1 1/2	0.55	<b>PEFF33G</b>	348	348
1	25	<b>G1</b>	25	44.5	28	19	19	68	74	26.2	52.4	41	10.5	M10×35	3/8×1 1/2	0.80	<b>PEFF34G</b>	348	348
1 1/4	32	<b>G1 1/4</b>	31	53.5	30	22	22	84	81	30.2	58.7	50	10.5	M10×35	7/16×1 1/2	1.30	<b>PEFF35G</b>	278	278
1 1/2	38	<b>G1 1/2</b>	38	62.5	36	25	24	97	95	35.7	69.9	58	13.5	M12×45	1/2×1 3/4	1.60	<b>PEFF36G</b>	210	210
2	51	<b>G2</b>	50	77.0	41	25	26	109	105	42.9	77.8	65	13.5	M12×45	1/2×1 3/4	2.00	<b>PEFF38G</b>	210	210
2 1/2	64	<b>G2 1/2</b>	60	89.0	50	25	30	127	115	50.8	88.9	77	13.5	M12×45	1/2×1 3/4	2.40	<b>PEFF310G</b>	175	175

#### 6000 PSI Series

1/2	13	<b>G1/2</b>	13	34.0	18	16	16	59	57	18.2	40.5	36	8.8	M 8×30	5/16×1 1/4	0.35	<b>PEFF62G</b>	420	420
3/4	19	<b>G3/4</b>	19	44.5	28	20	22	68	72	23.8	50.8	41	10.5	M10×35	3/8×1 1/2	0.80	<b>PEFF63G</b>	420	420
1	25	<b>G1</b>	25	53.5	30	24	24	84	82	27.8	57.2	50	13.5	M12×45	7/16×1 1/2	1.30	<b>PEFF64G</b>	420	420
1 1/4	32	<b>G1 1/4</b>	31	62.5	36	25	25	97	95	31.8	66.6	58	15.0**	M14×45	1/2×1 3/4	1.60	<b>PEFF65G</b>	420	420
1 1/2	38	<b>G1 1/2</b>	38	77.0	51	26	28	109	110	36.5	79.3	65	17.0	M16×50	5/8×2	2.00	<b>PEFF66G</b>	420	420
2	51	<b>G2</b>	50	87.0	45	35	34	133	134	44.5	96.8	75	21.0	M20×65	3/4×2 1/2	2.50	<b>PEFF68G</b>	420	420

\*\* DB = 13.5 for UNC Screws

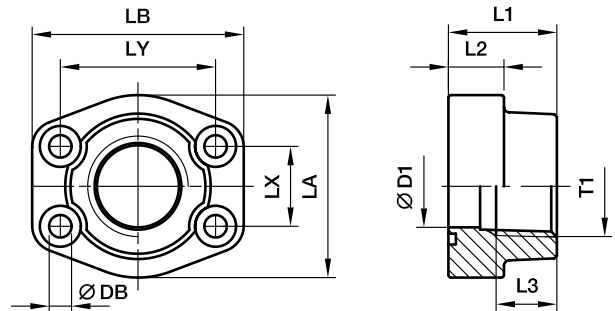
<sup>1)</sup> Pressure shown = Item deliverable

$$\frac{PN \text{ (bar)}}{10} = PN \text{ (MPa)}$$

\*Please add the suffixes below according to the material / surface required.

Order code suffixes					
Material	Suffix surface and material	Example only 4 bolt flange	Example 4 bolt flange incl. metr. screws and O-ring	Example 4 bolt flange incl. UNC screws and O-ring	Standard sealing material (no additional suffix needed)
Steel, blanc oil dipped	S	PEFF32GS	PEFF32GSM	PEFF32GSU	NBR
Stainless steel	SS	PEFF32GSS	PEFF32GSSM	PEFF32GSSU	VIT

**PFF-N SAE Straight 4 bolt flange with NPT thread**

 SAE Flange / Female NPT thread  
 (ISO 6162-1/-2) (SAE 476)

**3000 PSI Series**

Nom. flange size		T1	D1	L1	L2	L3	LA	LB	LX	LY	DB	Screws		Weight (steel) kg/piece	Order code*	PN (bar) <sup>1)</sup>	
SAE (in)	ISO (DN)											(metr.)	(unc.)			S	SS
1/2	13	3/8NPT	13	36	16	15	46	58	17.5	38.1	9.0	M 8×30	5/16×1 1/4	0.25	<b>PFF32N38</b>	345	345
1/2	13	1/2NPT	13	36	16	15	46	58	17.5	38.1	9.0	M 8×30	5/16×1 1/4	0.28	<b>PFF32N</b>	345	345
3/4	19	3/4NPT	19	36	18	19	49	66	22.3	47.6	10.5	M10×35	3/8×1 1/2	0.39	<b>PFF33N</b>	345	345
1	25	1NPT	25	38	18	19	53	71	26.2	52.4	10.5	M10×35	3/8×1 1/2	0.46	<b>PFF34N</b>	345	345
1 1/4	32	1 1/4NPT	31	41	21	22	69	80	30.2	58.7	10.5	M10×40	7/16×1 1/2	0.66	<b>PFF35N</b>	276	276
1 1/2	38	1 1/2NPT	38	44	25	24	77	94	35.7	69.9	13.5	M12×45	1/2×1 3/4	1.05	<b>PFF36N</b>	207	207
2	51	2NPT	50	45	25	26	89	103	42.9	77.8	13.5	M12×45	1/2×1 3/4	1.19	<b>PFF38N</b>	207	207
2 1/2	64	2 1/2NPT	63	50	25	30	101	115	50.8	88.9	13.5	M12×45	1/2×1 3/4	1.40	<b>PFF310N</b>	172	172
3	76	3NPT	73	50	27	34	124	135	61.9	106.4	17.0	M16×50	5/8×2	2.15	<b>PFF312N</b>	138	138
3 1/2	89	3 1/2NPT	89	50	27	36	136	152	69.9	120.7	17.0	M16×50	5/8×2	2.40	<b>PFF314N</b>	34	34
4	102	4NPT	99	50	27	36	146	162	77.8	130.2	17.0	M16×50	5/8×2	2.85	<b>PFF316N</b>	34	34
5	127	5NPT	120	50	28	36	180	184	92.1	152.4	17.0	M16×50	5/8×2	3.25	<b>PFF320N</b>	34	34

**6000 PSI Series**

1/2	13	3/8NPT	13	36	16	15	46	58	18.2	40.5	9.0	M 8×30	5/16×1 1/4	0.26	<b>PFF62N38</b>	420	420
1/2	13	1/2NPT	13	36	16	15	46	58	18.2	40.5	9.0	M 8×30	5/16×1 1/4	0.29	<b>PFF62N</b>	420	420
3/4	19	3/4NPT	19	36	19	22	53	71	23.8	50.8	10.5	M10×35	3/8×1 1/2	0.50	<b>PFF63N</b>	420	420
1	25	1NPT	25	44	24	24	69	80	27.8	57.2	13.5	M12×45	1/2×1 3/4	0.76	<b>PFF64N</b>	420	420
1 1/4	32	1 1/4NPT	31	44	27	25	77	94	31.8	66.6	15.0	M14×45	1/2×1 3/4	1.20	<b>PFF65N</b>	420	420
1 1/2	38	1 1/2NPT	38	51	30	28	89	106	36.5	79.3	17.0	M16×50	5/8×2	1.65	<b>PFF66N</b>	420	420
2	51	2NPT	50	70	37	33	116	135	44.5	96.8	21.0	M20×65	3/4×2 1/2	2.45	<b>PFF68N</b>	420	420
2 1/2	64	2 1/2NPT	63	75	45	35	150	166	58.7	123.8	25.0	M24×85	–	3.05	<b>PFF610N</b>	420	420
3	76	3NPT	73	90	55	40	178	208	71.4	152.4	32.0	M30×110	–	3.45	<b>PFF612N</b>	420	420

1) Pressure shown = Item deliverable

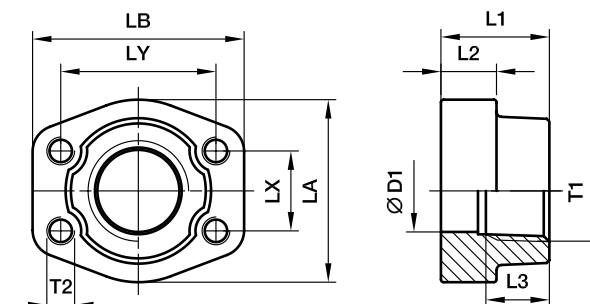
$$\frac{\text{PN (bar)}}{10} = \text{PN (MPa)}$$

\*Please add the suffixes below according to the material / surface required.

Order code suffixes					
Material	Suffix surface and material	Example only 4 bolt flange	Example 4 bolt flange incl. metr. screws and O-ring	Example 4 bolt flange incl. UNC screws and O-ring	Standard sealing material (no additional suffix needed)
Steel, blanc oil dipped	S	PFF32N38S	PFF32N38SM	PFF32N38SU	NBR
Stainless steel	SS	PFF32N38SS	PFF32N38SSM	PFF32N38SSU	VIT

## PCFF-N SAE Straight 4 bolt flange with NPT thread

SAE Counter flange / Female NPT thread  
(ISO 6162-1/-2) (SAE 476)



### 3000 PSI Series

Nom. flange size		T1	D1	L1	L2	L3	LA	LB	LX	LY	T2		Weight (steel) kg/piece	Order code*	PN (bar) <sup>1)</sup>	
SAE (in)	ISO (DN)										(metr.)	(unc.)			S	SS
1/2	13	3/8NPT	13	36	16	19	47	57	17.5	38.1	M 8	5/16	0.25	PCFF32N38	345	345
1/2	13	1/2NPT	13	36	16	19	47	57	17.5	38.1	M 8	5/16	0.28	PCFF32N	345	345
3/4	19	3/4NPT	19	36	18	19	49	66	22.3	47.6	M10	3/8	0.39	PCFF33N	345	345
1	25	1NPT	25	38	18	19	53	71	26.2	52.4	M10	3/8	0.46	PCFF34N	345	345
1 1/4	32	1 1/4NPT	31	41	21	22	69	80	30.2	58.7	M10	7/16	0.66	PCFF35N	276	276
1 1/2		1 1/2NPT	38	44	25	24	77	94	35.7	69.9	M12	1/2	1.05	PCFF36N	207	207
2	51	2NPT	50	45	25	26	89	103	42.9	77.8	M12	1/2	1.19	PCFF38N	207	207
2 1/2	64	2 1/2NPT	63	50	25	30	101	115	50.8	88.9	M12	1/2	1.40	PCFF310N	172	172
3	76	3NPT	73	50	27	30	124	135	61.9	106.4	M16	5/8	2.15	PCFF312N	138	138
3 1/2	89	3 1/2NPT	89	50	27	30	136	152	69.9	120.7	M16	5/8	2.40	PCFF314N	34	34
4	102	4NPT	99	50	27	30	146	162	77.8	130.2	M16	5/8	2.85	PCFF316N	34	34
5	127	5NPT	120	50	28	30	180	184	92.1	152.4	M16	5/8	3.25	PCFF320N	34	34

### 6000 PSI Series

1/2	13	3/8NPT	13	36	16	19	47	57	18.2	40.5	M 8	5/16	0.26	PCFF62N38	420	420
1/2	13	1/2NPT	13	36	16	19	47	57	18.2	40.5	M 8	5/16	0.29	PCFF62N	420	420
3/4	19	3/4NPT	19	36	19	22	53	71	23.8	50.8	M10	3/8	0.50	PCFF63N	420	420
1	25	1NPT	25	44	24	24	69	80	27.8	57.2	M12	7/16	0.76	PCFF64N	420	420
1 1/4	32	1 1/4NPT	31	44	27	25	77	94	31.8	66.6	M14	1/2	1.20	PCFF65N	420	420
1 1/2	32	1 1/2NPT	38	51	30	28	89	106	36.5	79.3	M16	5/8	1.65	PCFF66N	420	420
2	51	2NPT	50	70	37	33	116	135	44.5	96.8	M20	3/4	2.45	PCFF68N	420	420
2 1/2	64	2 1/2NPT	63	75	45	35	150	166	58.7	123.8	M24	-	3.05	PCFF610N	420	420
3	76	3NPT	73	90	55	40	178	208	71.4	152.4	M30	-	3.45	PCFF612N	420	420

<sup>1)</sup> Pressure shown = Item deliverable

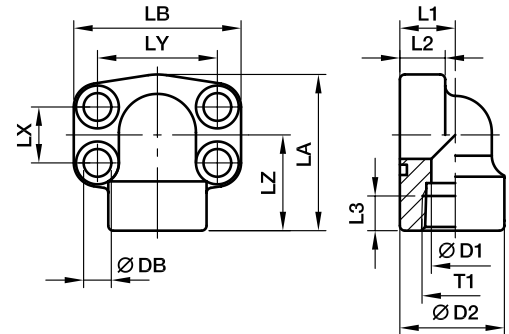
$$\frac{PN \text{ (bar)}}{10} = PN \text{ (MPa)}$$

\*Please add the suffixes below according to the material / surface required.

Order code suffixes				
Material	Suffix surface and material	Example 4 bolt flange with metr. threads	Example 4 bolt flange with UNC threads	Standard sealing material (no additional suffix needed)
Steel, blanc oil dipped	S	PCFF32N38SM	PCFF32N38SU	NBR
Stainless steel	SS	PCFF32N38SSM	PCFF32N38SSU	VIT

**PEFF-N SAE 90° 4 bolt flange with NPT thread**

SAE 90° Flange / Female NPT thread  
(ISO 6162-1/-2) (SAE 476)



**3000 PSI Series**

Nom. flange size		T1	D1	D2	L1	L2	L3	LA	LB	LX	LY	LZ	DB	Screws		Weight (steel) kg/piece	Order code*	PN (bar) <sup>1)</sup>	
SAE (in)	ISO (DN)													(metr.)	(unc.)			S	SS
1/2	13	1/2NPT	13	34.0	18	16	16	59	56	17.5	38.1	36	9.0	M 8×30	5/16×1 1/4	0.35	<b>PEFF32N</b>	348	348
3/4	19	3/4NPT	19	38.5	22	18	19	63	68	22.3	47.6	38	10.5	M10×35	3/8×1 1/2	0.55	<b>PEFF33N</b>	348	348
1	25	1NPT	25	44.5	28	19	19	68	74	26.2	52.4	41	10.5	M10×35	3/8×1 1/2	0.80	<b>PEFF34N</b>	348	348
1 1/4	32	1 1/4NPT	31	53.5	30	22	22	84	81	30.2	58.7	50	10.5	M10×35	7/16×1 1/2	1.30	<b>PEFF35N</b>	278	278
1 1/2	38	1 1/2NPT	38	62.5	36	25	24	97	95	35.7	69.9	58	13.5	M12×45	1/2×1 3/4	1.60	<b>PEFF36N</b>	210	210
2	51	2NPT	50	77.0	41	25	26	109	105	42.9	77.8	65	13.5	M12×45	1/2×1 3/4	2.00	<b>PEFF38N</b>	210	210
2 1/2	64	2 1/2NPT	60	89.0	50	25	30	127	115	50.8	88.9	77	13.5	M12×45	1/2×1 3/4	2.40	<b>PEFF310N</b>	175	175

**6000 PSI Series**

1/2	13	1/2NPT	13	34.0	18	16	16	59	56	18.2	40.5	36	9.0	M 8×30	5/16×1 1/4	0.35	<b>PEFF62N</b>	420	420
3/4	19	3/4NPT	19	44.5	28	20	22	68	72	23.8	50.8	41	10.5	M10×35	3/8×1 1/2	0.80	<b>PEFF63N</b>	420	420
1	25	1NPT	25	53.5	30	24	24	84	82	27.8	57.2	50	13.5	M12×45	7/16×1 1/2	1.30	<b>PEFF64N</b>	420	420
1 1/4	32	1 1/4NPT	31	62.5	36	25	25	97	95	31.8	66.6	58	15.0**	M14×45	1/2×1 3/4	1.60	<b>PEFF65N</b>	420	420
1 1/2	38	1 1/2NPT	38	77.0	51	26	28	109	110	36.5	79.3	65	17.0	M16×50	5/8×2	2.00	<b>PEFF66N</b>	420	420
2	51	2NPT	50	87.0	45	35	34	133	134	44.5	96.8	75	21.0	M20×65	3/4×2 1/2	2.50	<b>PEFF68N</b>	420	420

\*\*DB = 13.5 for UNC Screws

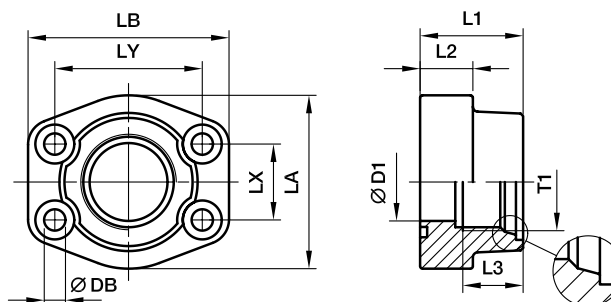
<sup>1)</sup> Pressure shown = Item deliverable

$$\frac{PN \text{ (bar)}}{10} = PN \text{ (MPa)}$$

\*Please add the suffixes below according to the material / surface required.

Order code suffixes					
Material	Suffix surface and material	Example only 4 bolt flange	Example 4 bolt flange incl. metr. screws and O-ring	Example 4 bolt flange incl. UNC screws and O-ring	Standard sealing material (no additional suffix needed)
Steel, blanc oil dipped	S	PEFF32NS	PEFF32NSM	PEFF32NSU	NBR
Stainless steel	SS	PEFF32NSS	PEFF32NSSM	PEFF32NSSU	VIT

**PAFS-M SAE Straight 4 bolt flange with metric thread**

 SAE Flange / Female metric thread for O-ring  
 (ISO 6162-1/-2) (ISO 6149-1)

**3000 PSI Series**

Nom. flange size		T1	D1	L1	L2	L3	LA	LB	LX	LY	DB	Screws		Weight (steel) kg/piece	Order code*	PN (bar) <sup>1)</sup>	
SAE (in)	ISO (DN)											(metr.)	(unc.)			S	SS
1/2	13	M18×1.5	13	36	16	15	46	58	17.5	38.1	9.0	M 8×30	5/16×1 1/4	0.33	PAFS080MA	345	345
1/2	13	M20×1.5	13	36	16	15	46	58	17.5	38.1	9.0	M 8×30	5/16×1 1/4	0.30	PAFS080MB	345	345
3/4	19	M22×1.5	19	36	18	16	49	66	22.3	47.6	10.5	M10×35	3/8×1 1/2	0.45	PAFS100MA	345	345
3/4	19	M27×2.0	19	36	18	19	49	66	22.3	47.6	10.5	M10×35	3/8×1 1/2	0.42	PAFS100MB	345	345
1	25	M27×2.0	25	38	18	19	53	71	26.2	52.4	10.5	M10×40	7/16×1 1/2	0.48	PAFS102MA	276	276
1	25	M33×2.0	25	38	18	19	53	71	26.2	52.4	13.5	M12×45	1/2×1 3/4	0.45	PAFS102MB	207	207
1 1/4	32	M33×2.0	31	41	21	19	69	80	30.2	58.7	13.5	M12×45	1/2×1 3/4	0.84	PAFS104MA	207	207
1 1/4	32	M42×2.0	31	41	21	20	69	80	30.2	58.7	13.5	M12×45	1/2×1 3/4	0.71	PAFS104MB	172	172
1 1/2	38	M42×2.0	38	44	25	20	77	94	35.7	69.9	17.0	M16×50	5/8×2	1.25	PAFS106MA	138	138
1 1/2	38	M48×2.0	38	44	25	22	77	94	35.7	69.9	17.0	M16×50	5/8×2	1.14	PAFS106MB	34	34

**6000 PSI Series**

1/2	13	M18×1.5	13	36	16	15	46	58	18.2	40.5	9.0	M 8×30	5/16×1 1/4	0.33	PAFS401MA	420	420
1/2	13	M20×1.5	13	36	16	15	46	58	18.2	40.5	9.0	M 8×30	5/16×1 1/4	0.30	PAFS401MB	420	420
3/4	19	M22×1.5	19	36	19	16	53	71	23.8	50.8	10.5	M10×35	3/8×1 1/2	0.53	PAFS402MA	420	420
3/4	19	M27×2.0	19	36	19	19	53	71	23.8	50.8	10.5	M10×35	3/8×1 1/2	0.50	PAFS402MB	420	420
1	25	M27×2.0	25	44	24	19	69	80	27.8	57.2	13.5	M12×45	7/16×1 1/2	0.86	PAFS403MA	420	420
1	25	M33×2.0	25	44	24	19	69	80	27.8	57.2	13.5	M12×45	7/16×1 1/2	0.84	PAFS403MB	420	420
1 1/4	32	M33×2.0	31	44	27	19	77	94	31.8	66.6	15.0	M14×45	1/2×1 3/4	1.30	PAFS404MA	420	420
1 1/4	32	M42×2.0	31	44	27	20	77	94	31.8	66.6	15.0	M14×45	1/2×1 3/4	1.25	PAFS404MB	420	420
1 1/2	38	M42×2.0	38	51	30	20	89	106	36.5	79.3	17.0	M16×50	5/8×2	1.78	PAFS405MA	420	420
1 1/2	38	M48×2.0	38	51	30	22	89	106	36.5	79.3	17.0	M16×50	5/8×2	1.70	PAFS405MB	420	420

1) Pressure shown = Item deliverable

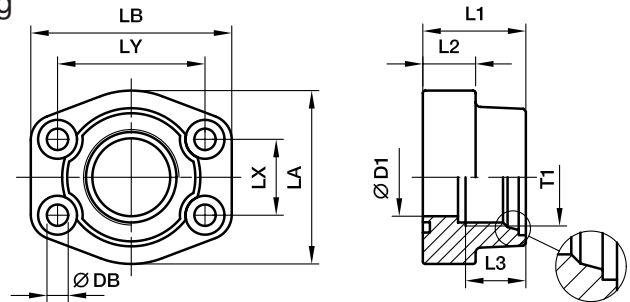
$$\frac{\text{PN (bar)}}{10} = \text{PN (MPa)}$$

\*Please add the suffixes below according to the material / surface required.

Order code suffixes					
Material	Suffix surface and material	Example only 4 bolt flange	Example 4 bolt flange incl. metr. screws and O-ring	Example 4 bolt flange incl. UNC screws and O-ring	Standard sealing material (no additional suffix needed)
Steel, blanc oil dipped	S	PAFS080MAS	PAFS080MASM	PAFS080MASU	NBR
Stainless steel	SS	PAFS080MASS	PAFS080MASSM	PAFS080MASSU	VIT

**PAFS-U SAE Straight 4 bolt flange with UN/UNF thread**

SAE Flange / Female UN/UNF thread for O-ring  
(ISO 6162-1/-2) (ISO 11926-1)



**3000 PSI Series**

Nom. flange size		T1	D1	L1	L2	L3	LA	LB	LX	LY	DB	Screws		Weight (steel) kg/piece	Order code*	PN (bar) <sup>1)</sup>	
SAE (in)	ISO (DN)											(metr.)	(unc.)			S	SS
1/2	13	<b>3/4-16UNF-2A</b>	13	36	16	17	46	58	17.5	38.1	9.0	M 8×30	5/16×1 1/4	0.30	<b>PAFS080UA</b>	345	345
3/4	19	<b>7/8-14UNF-2A</b>	19	36	18	17	49	66	22.3	47.6	10.5	M10×35	3/8×1 1/2	0.45	<b>PAFS100UA</b>	345	345
3/4	19	<b>1 1/16-12UN-2A</b>	19	36	18	23	49	66	22.3	47.6	10.5	M10×35	3/8×1 1/2	0.42	<b>PAFS100UB</b>	345	345
1	25	<b>1 1/16-12UN-2A</b>	25	38	18	23	53	71	26.2	52.4	10.5	M10×35	3/8×1 1/2	0.48	<b>PAFS102UA</b>	345	345
1	25	<b>1 5/16-12UN-2A</b>	25	38	18	23	53	71	26.2	52.4	10.5	M10×35	3/8×1 1/2	0.45	<b>PAFS102UB</b>	276	276
1 1/4	32	<b>1 5/16-12UN-2A</b>	31	41	21	23	69	80	30.2	58.7	10.5	M10×35	7/16×1 1/2	0.84	<b>PAFS104UA</b>	207	207
1 1/4	32	<b>1 5/8-12UN-2A</b>	31	41	21	23	69	80	30.2	58.7	10.5	M10×35	7/16×1 1/2	0.71	<b>PAFS104UB</b>	207	207
1 1/2	38	<b>1 5/8-12UN-2A</b>	38	44	25	23	77	94	35.7	69.9	13.5	M12×45	1/2×1 3/4	1.25	<b>PAFS106UA</b>	172	172
1 1/2	38	<b>1 7/8-12UN-2A</b>	38	44	25	23	77	94	35.7	69.9	13.5	M12×45	1/2×1 3/4	1.14	<b>PAFS106UB</b>	138	138

**6000 PSI Series**

1/2	13	<b>3/4-16UNF-2A</b>	13	36	16	17	46	58	18.2	40.5	9.0	M 8×30	5/16×1 1/4	0.30	<b>PAFS401UA</b>	420	420
3/4	19	<b>7/8-14UNF-2A</b>	19	36	19	17	53	71	23.8	50.8	10.5	M10×35	5/16×1 1/4	0.53	<b>PAFS402UA</b>	420	420
3/4	19	<b>1 1/16-12UN-2A</b>	19	36	19	23	53	71	23.8	50.8	10.5	M10×35	3/8×1 1/2	0.50	<b>PAFS402UB</b>	420	420
1	25	<b>1 1/16-12UN-2A</b>	25	44	24	23	69	80	27.8	57.2	13.5	M12×45	3/8×1 1/2	0.86	<b>PAFS403UA</b>	420	420
1	25	<b>1 5/16-12UN-2A</b>	25	44	24	23	69	80	27.8	57.2	13.5	M12×45	7/16×1 1/2	0.84	<b>PAFS403UB</b>	420	420
1 1/4	32	<b>1 5/16-12UN-2A</b>	31	44	27	23	77	94	31.8	66.6	15.0	M14×45	7/16×1 1/2	1.30	<b>PAFS404UA</b>	420	420
1 1/4	32	<b>1 5/8-12UN-2A</b>	31	44	27	23	77	94	31.8	66.6	15.0	M14×45	1/2×1 3/4	1.25	<b>PAFS404UB</b>	420	420
1 1/2	38	<b>1 5/8-12UN-2A</b>	38	51	30	23	89	106	36.5	79.3	17.0	M16×50	1/2×1 3/4	1.78	<b>PAFS405UA</b>	420	420
1 1/2	38	<b>1 7/8-12UN-2A</b>	38	51	30	23	89	106	36.5	79.3	18.0	M16×50	5/8×2	1.70	<b>PAFS405UB</b>	420	420

<sup>1)</sup> Pressure shown = Item deliverable

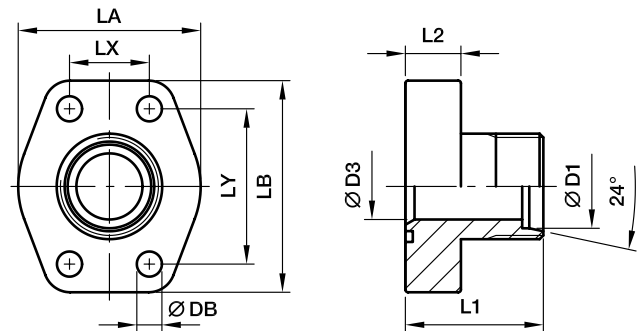
$$\frac{PN \text{ (bar)}}{10} = PN \text{ (MPa)}$$

\*Please add the suffixes below according to the material / surface required.

Order code suffixes					
Material	Suffix surface and material	Example only 4 bolt flange	Example 4 bolt flange incl. metr. screws and O-ring	Example 4 bolt flange incl. UNC screws and O-ring	Standard sealing material (no additional suffix needed)
Steel, blanc oil dipped	S	PAFS080UAS	PAFS080UASM	PAFS080UASU	NBR
Stainless steel	SS	PAFS080UASS	PAFS080UASSM	PAFS080UASSU	VIT



**PFF-..S/L SAE Straight 4 bolt flange with EO 24° cone end**

 SAE Flange / EO 24° cone end  
 (ISO 6162-1/-2)

**3000 PSI Series**

Nom. flange size		D1 <sup>2)</sup>	D3	L1	L2	LA	LB	LX	LY	DB	Screws		Weight (steel) kg/piece	Order code*	PN (bar) <sup>1)</sup>	
SAE (in)	ISO (DN)										(metr.)	(unc.)			A3C	SS
1/2	13	12S	8	47	16	42	57	17.5	38.1	9.0	M 8×30	5/16×1 1/4	0.25	<b>PFF32/12S</b>	348	348
1/2	13	15L	11	47	16	42	57	17.5	38.1	9.0	M 8×30	5/16×1 1/4	0.29	<b>PFF32/15L</b>	348	315
1/2	13	16S	12	47	16	42	57	17.5	38.1	9.0	M 8×30	5/16×1 1/4	0.32	<b>PFF32/16S</b>	348	348
3/4	19	16S	12	52	18	50	66	22.3	47.6	11.0	M10×35	3/8×1 1/2	0.35	<b>PFF33/16S</b>	348	348
3/4	19	20S	16	52	18	50	66	22.3	47.6	11.0	M10×35	3/8×1 1/2	0.36	<b>PFF33/20S</b>	348	348
3/4	19	22L	18	52	18	50	66	22.3	47.6	11.0	M10×35	3/8×1 1/2	0.37	<b>PFF33/22L</b>	250	160
1	25	20S	16	55	18	53	71	26.2	52.4	11.0	M10×35	3/8×1 1/2	0.44	<b>PFF34/20S</b>	348	348
1	25	25S	20	55	18	53	71	26.2	52.4	11.0	M10×35	3/8×1 1/2	0.46	<b>PFF34/25S</b>	348	348
1	25	28L	23	55	18	53	71	26.2	52.4	11.0	M10×35	3/8×1 1/2	0.50	<b>PFF34/28L</b>	250	160
1 1/4	32	25S	20	60	21	69	80	30.2	58.7	11.5	M10×35	7/16×1 1/2	0.65	<b>PFF35/25S</b>	278	278
1 1/4	32	30S	25	60	21	69	80	30.2	58.7	11.5	M10×35	7/16×1 1/2	0.70	<b>PFF35/30S</b>	278	278
1 1/4	32	35L	30	60	21	69	80	30.2	58.7	11.5	M10×40	7/16×1 1/2	0.72	<b>PFF35/35L</b>	278	278
1 1/2	38	35L	30	70	25	77	94	35.7	69.9	13.5	M12×45	1/2×1 3/4	1.00	<b>PFF36/35L</b>	210	210
1 1/2	38	38S	32	70	25	77	94	35.7	69.9	13.5	M12×45	1/2×1 3/4	1.00	<b>PFF36/38S</b>	210	210
1 1/2	38	42L	36	70	25	77	94	35.7	69.9	13.5	M12×45	1/2×1 3/4	1.02	<b>PFF36/42L</b>	210	210
2	51	42L	32	74	25	90	103	42.9	77.8	13.5	M12×45	1/2×1 3/4	1.40	<b>PFF38/38S</b>	210	210
2	51	38S	36	74	25	90	103	42.9	77.8	13.5	M12×45	1/2×1 3/4	1.35	<b>PFF38/42L</b>	210	210

**6000 PSI Series**

1/2	13	12S	8	47	16	47	57	18.3	40.5	9.0	M 8×30	5/16×1 1/4	0.30	<b>PFF62/12S</b>	420	420
1/2	13	14S	10	47	16	47	57	18.3	40.5	9.0	M 8×30	5/16×1 1/4	0.32	<b>PFF62/14S</b>	420	420
1/2	13	16S	12	47	16	47	57	18.3	40.5	9.0	M 8×30	5/16×1 1/4	0.35	<b>PFF62/16S</b>	420	420
3/4	19	16S	12	52	18	53	71	23.8	50.8	11.0	M10×35	3/8×1 1/2	0.68	<b>PFF63/16S</b>	420	420
3/4	19	20S	16	52	18	53	71	23.8	50.8	11.0	M10×35	3/8×1 1/2	0.73	<b>PFF63/20S</b>	420	400
3/4	19	22L	18	52	18	53	71	23.8	50.8	11.0	M10×35	3/8×1 1/2	0.82	<b>PFF63/22L</b>	250	160
1	25	20S	16	60	21	66	80	27.8	57.2	13.0	M12×45	7/16×1 1/2	1.00	<b>PFF64/20S</b>	420	400
1	25	25S	20	60	21	66	80	27.8	57.2	13.0	M12×45	7/16×1 1/2	1.15	<b>PFF64/25S</b>	420	400
1	25	28L	23	60	21	66	80	27.8	57.2	13.0	M12×45	7/16×1 1/2	1.20	<b>PFF64/28L</b>	250	160
1 1/4	32	25S	20	68	24	78	94	31.8	66.6	15.0	M14×45	1/2×1 3/4	1.60	<b>PFF65/25S</b>	420	400
1 1/4	32	30S	25	68	24	78	94	31.8	66.6	15.0	M14×45	1/2×1 3/4	1.80	<b>PFF65/30S</b>	420	400
1 1/4	32	35L	30	68	24	78	94	31.8	66.6	15.0	M14×45	1/2×1 3/4	1.85	<b>PFF65/35L</b>	250	160
1 1/2	38	35L	25	72	27	90	106	36.5	79.3	17.0	M16×50	5/8×2	2.20	<b>PFF66/35L</b>	250	160
1 1/2	38	38S	32	72	27	90	106	36.5	79.3	17.0	M16×50	5/8×2	2.25	<b>PFF66/38S</b>	315	315
1 1/2	38	42L	36	72	27	90	106	36.5	79.3	17.0	M16×50	5/8×2	2.35	<b>PFF66/42L</b>	250	160

<sup>2)</sup> L = light series; S = heavy series

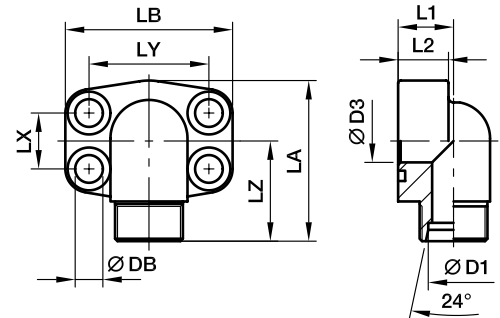
**Delivery without nut and ring.**  
**Information on ordering complete fittings**  
**or alternative sealing materials see page M11.**
<sup>1)</sup> Pressure shown = Item deliverable

\*Please add the suffixes below according to the material / surface required.

$$\frac{\text{PN (bar)}}{10} = \text{PN (MPa)}$$

Order code suffixes					
Material	Suffix surface and material	Example only 4 bolt flange	Example 4 bolt flange incl. metr. screws and O-ring	Example 4 bolt flange incl. UNC screws and O-ring	Standard sealing material (no additional suffix needed)
Steel, zinc plated, chrome <sup>6</sup> -free	CF	PFF32/12SCF	PFF32/12SOMDCFM	PFF32/12SOMDCFU	NBR
Steel, zinc yellow plated	A3C	PFF32/12SA3C	PFF32/12SOMDA3CM	PFF32/12SOMDA3CU	NBR
Stainless steel	SS	PFF32/12S-SS	PFF32/12SOMDSSM	PFF32/12SOMDSSU	VIT

**PAFG-90M SAE 90° 4 bolt flange with EO 24° cone end**

 SAE 90° Flange / EO 24° cone end  
 (ISO 6162-1/-2)

**3000 PSI Series**

Nom. flange size		D1 <sup>2)</sup>	D3	L1	L2	LA	LB	LX	LY	LZ	DB	Screws		Weight (steel) kg/piece	Order code*	PN (bar) <sup>1)</sup>	
SAE (in)	ISO (DN)											(metr.)	(unc.)			A3C	SS
1/2	13	12S	8	18	16	60	57	17.5	38.1	36	9.0	M 8×30	5/16×1 1/4	0.28	PAFG080/90M12S	348	348
1/2	13	15L	11	18	16	60	57	17.5	38.1	36	9.0	M 8×30	5/16×1 1/4	0.33	PAFG080/90M15L	348	315
1/2	13	16S	12	18	16	60	57	17.5	38.1	36	9.0	M 8×30	5/16×1 1/4	0.30	PAFG080/90M16S	348	348
3/4	19	16S	12	22	18	63	66	22.3	47.6	38	11.0	M10×35	3/8×1 1/2	0.43	PAFG100/90M16S	348	348
3/4	19	20S	16	22	18	63	66	22.3	47.6	38	11.0	M10×35	3/8×1 1/2	0.43	PAFG100/90M20S	348	348
3/4	19	22L	18	22	18	63	66	22.3	47.6	38	11.0	M10×35	3/8×1 1/2	0.43	PAFG100/90M22L	250	160
1	25	20S	16	28	19	80	71	26.2	52.4	42	11.0	M10×35	3/8×1 1/2	0.68	PAFG102/90M20S	348	348
1	25	25S	20	28	19	80	71	26.2	52.4	42	11.0	M10×35	3/8×1 1/2	0.64	PAFG102/90M25S	348	348
1	25	28L	23	28	19	80	71	26.2	52.4	42	11.0	M10×35	3/8×1 1/2	0.62	PAFG102/90M28L	250	160
1 1/4	32	25S	20	30	22	84	80	30.2	58.7	50	11.5	M10×35	7/16×1 1/2	1.15	PAFG104/90M25S	278	278
1 1/4	32	30S	25	30	22	84	80	30.2	58.7	50	11.5	M10×35	7/16×1 1/2	1.02	PAFG104/90M30S	278	278
1 1/4	32	35L	30	30	22	84	80	30.2	58.7	50	11.5	M10×40	7/16×1 1/2	0.94	PAFG104/90M35L	278	278
1 1/2	38	35L	30	36	25	88	94	35.7	69.9	58	13.5	M12×45	1/2×1 3/4	1.50	PAFG106/90M35L	210	210
1 1/2	38	38S	32	36	25	88	94	35.7	69.9	58	13.5	M12×45	1/2×1 3/4	1.50	PAFG106/90M38S	210	210
1 1/2	38	42L	36	36	25	88	94	35.7	69.9	58	13.5	M12×45	1/2×1 3/4	1.50	PAFG106/90M42L	210	210

**6000 PSI Series**

1/2	13	12S	8	20	16	60	57	18.2	40.5	36	9.0	M 8×30	5/16×1 1/4	0.30	PAFG401/90M12S	420	420
1/2	13	14S	10	20	16	60	57	18.2	40.5	36	9.0	M 8×30	5/16×1 1/4	0.32	PAFG401/90M14S	420	420
1/2	13	16S	12	20	16	60	57	18.2	40.5	36	9.0	M 8×30	5/16×1 1/4	0.35	PAFG401/90M16S	420	420
3/4	19	16S	12	26	19	68	71	23.8	50.8	41	11.0	M10×35	3/8×1 1/2	0.53	PAFG402/90M16S	420	420
3/4	19	20S	20	26	19	68	71	23.8	50.8	41	11.0	M10×35	3/8×1 1/2	0.53	PAFG402/90M20S	420	400
3/4	19	22L	23	26	19	68	71	23.8	50.8	41	11.0	M10×35	3/8×1 1/2	0.53	PAFG402/90M22L	250	160
1	25	20S	16	30	24	83	80	27.8	57.2	50	13.0	M12×45	7/16×1 1/2	0.90	PAFG403/90M20S	420	400
1	25	25S	20	30	24	83	80	27.8	57.2	50	13.0	M12×45	7/16×1 1/2	0.90	PAFG403/90M25S	420	400
1	25	28L	23	30	24	83	80	27.8	57.2	50	13.0	M12×45	7/16×1 1/2	0.90	PAFG403/90M28L	250	160
1 1/4	32	25S	20	36	25	97	94	31.8	66.6	58	15.0	M14×45	1/2×1 3/4	1.35	PAFG404/90M25S	420	400
1 1/4	32	30S	25	36	25	97	94	31.8	66.6	58	15.0	M14×45	1/2×1 3/4	1.40	PAFG404/90M30S	420	400
1 1/4	32	35L	30	36	25	97	94	31.8	66.6	58	15.0	M14×45	1/2×1 3/4	1.45	PAFG404/90M35L	250	160
1 1/2	38	35L	25	41	26	110	106	36.5	79.3	65	17.0	M16×50	5/8×2	1.80	PAFG405/90M35L	250	160
1 1/2	38	38S	32	41	26	110	106	36.5	79.3	65	17.0	M16×50	5/8×2	1.85	PAFG405/90M38S	315	315
1 1/2	38	42L	36	41	26	110	106	36.5	79.3	65	17.0	M16×50	5/8×2	1.90	PAFG405/90M42L	250	160

2) L = light series; S = heavy series

**Delivery without nut and ring.**  
**Information on ordering complete fittings**  
**or alternative sealing materials see page M11.**

1) Pressure shown = Item deliverable

$$\frac{\text{PN (bar)}}{10} = \text{PN (MPa)}$$

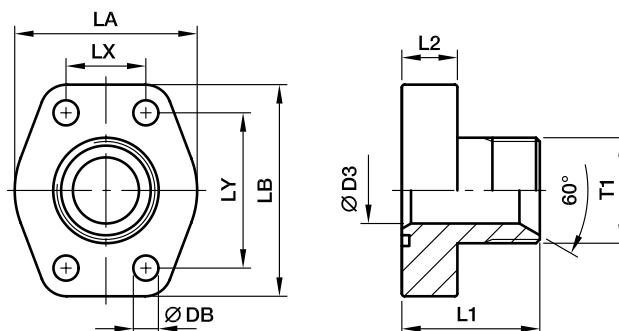
\*Please add the suffixes below according to the material / surface required.

Order code suffixes					
Material	Suffix surface and material	Example only 4 bolt flange	Example 4 bolt flange incl. metr. screws and O-ring	Example 4 bolt flange incl. UNC screws and O-ring	Standard sealing material (no additional suffix needed)
Steel, zinc plated, chrome <sup>6</sup> -free	CF	PAFG080/90M12SCF	PAFG080/90M12SOMDCFM	PAFG080/90M12SOMDCFU	NBR
Steel, zinc yellow plated	A3C	PAFG080/90M12SA3C	PAFG080/90M12SOMDA3CM	PAFG080/90M12SOMDA3CU	NBR
Stainless steel	SS	PAFG080/90M12S-SS	PAFG080/90M12SOMDSSM	PAFG080/90M12SOMDSSU	VIT

## SAE 4 Bolt flanges

### PAFG-G SAE Straight 4 bolt flange with BSPP 60° cone end

SAE Flange / BSPP 60° cone end  
(ISO 6162-1/-2) (ISO 8434-6)



#### 3000 PSI Series

Nom. flange size		T1	D3	L1	L2	LA	LB	LX	LY	DB	Screws		Weight (steel) kg/piece	Order code*	PN (bar) <sup>1)</sup>	
SAE (in)	ISO (DN)										(metr.)	(unc.)			A3C	SS
1/2	13	G3/8	10	37	16	47	56	17.5	38.1	9.0	M 8×30	5/16×1 1/4	0.25	PAFG080G38	348	348
1/2	13	G1/2	12	39	16	47	56	17.5	38.1	9.0	M 8×30	5/16×1 1/4	0.29	PAFG080G	348	348
1/2	13	G3/4	13	42	16	47	56	17.5	38.1	9.0	M 8×30	5/16×1 1/4	0.32	PAFG080G34	348	348
3/4	19	G1/2	12	42	18	50	66	22.3	47.6	11.0	M10×35	3/8×1 1/2	0.35	PAFG100G12	348	348
3/4	19	G3/4	17	45	18	50	66	22.3	47.6	11.0	M10×35	3/8×1 1/2	0.34	PAFG100G	348	348
3/4	19	G1	19	47	18	50	66	22.3	47.6	11.0	M10×35	3/8×1 1/2	0.37	PAFG100G1	348	348
1	25	G3/4	17	47	18	53	71	26.2	52.4	11.0	M10×35	3/8×1 1/2	0.44	PAFG102G34	348	348
1	25	G1	22	49	18	53	71	26.2	52.4	11.0	M10×35	3/8×1 1/2	0.46	PAFG102G	348	348
1	25	G1 1/4	25	49	18	53	71	26.2	52.4	11.0	M10×35	3/8×1 1/2	0.50	PAFG102G114	348	348
1 1/4	32	G1	22	53	21	69	80	30.2	58.7	11.5	M10×35	7/16×1 1/2	0.65	PAFG104G1	278	278
1 1/4	32	G1 1/4	27	53	21	69	80	30.2	58.7	11.5	M10×35	7/16×1 1/2	0.70	PAFG104G	278	278
1 1/4	32	G1 1/2	31	55	21	69	80	30.2	58.7	11.5	M10×40	7/16×1 1/2	0.72	PAFG104G112	278	278
1 1/2	38	G1 1/4	27	59	24	77	94	35.7	69.9	13.5	M12×45	1/2×1 3/4	1.00	PAFG106G114	210	210
1 1/2	38	G1 1/2	34	61	24	77	94	35.7	69.9	13.5	M12×45	1/2×1 3/4	1.00	PAFG106G	210	210
1 1/2	38	G2	38	63	24	77	94	35.7	69.9	13.5	M12×45	1/2×1 3/4	1.02	PAFG106G2	210	210
2	51	G1 1/2	34	69	25	90	103	42.9	77.8	13.5	M12×45	1/2×1 3/4	1.40	PAFG108G112	210	210
2	51	G2	42	69	25	90	103	42.9	77.8	13.5	M12×45	1/2×1 3/4	1.35	PAFG108G	210	210

#### 6000 PSI Series

1/2	13	G3/8	10	38	16	47	56	18.2	40.5	9.0	M 8×30	5/16×1 1/4	0.30	PAFG401G38	420	420
1/2	13	G1/2	12	40	16	47	56	18.2	40.5	9.0	M 8×30	5/16×1 1/4	0.32	PAFG401G	420	420
1/2	13	G3/4	13	43	16	47	56	18.2	40.5	9.0	M 8×30	5/16×1 1/4	0.35	PAFG401G34	420	420
3/4	19	G1/2	12	44	18	53	71	23.8	50.8	11.0	M10×35	3/8×1 1/2	0.68	PAFG402G12	420	420
3/4	19	G3/4	17	47	18	53	71	23.8	50.8	11.0	M10×35	3/8×1 1/2	0.73	PAFG402G	420	420
3/4	19	G1	19	49	18	53	71	23.8	50.8	11.0	M10×35	3/8×1 1/2	0.82	PAFG402G1	420	420
1	25	G3/4	17	54	21	66	80	27.8	57.2	13.0	M12×45	7/16×1 1/2	1.00	PAFG403G34	420	420
1	25	G1	22	56	21	66	80	27.8	57.2	13.0	M12×45	7/16×1 1/2	1.15	PAFG403G	420	420
1	25	G1 1/4	25	56	21	66	80	27.8	57.2	13.0	M12×45	7/16×1 1/2	1.20	PAFG403G114	420	420
1 1/4	32	G1	22	61	24	78	94	31.8	66.6	15.0	M14×45	1/2×1 3/4	1.60	PAFG404G1	420	420
1 1/4	32	G1 1/4	27	61	24	78	94	31.8	66.6	15.0	M14×45	1/2×1 3/4	1.80	PAFG404G	420	420
1 1/4	32	G1 1/2	31	63	24	78	94	31.8	66.6	15.0	M14×45	1/2×1 3/4	1.85	PAFG404G112	420	420
1 1/2	38	G1 1/4	27	65	27	90	106	36.5	79.3	17.0	M16×50	5/8×2	2.20	PAFG405G114	420	420
1 1/2	38	G1 1/2	32	67	27	90	106	36.5	79.3	17.0	M16×50	5/8×2	2.25	PAFG405G	420	420

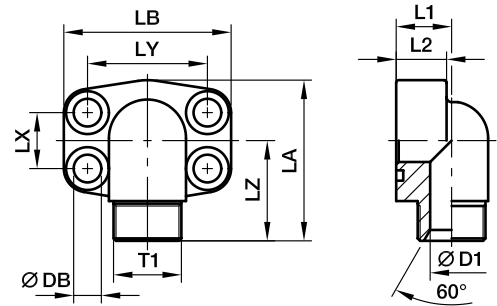
<sup>1)</sup> Pressure shown = Item deliverable

$$\frac{\text{PN (bar)}}{10} = \text{PN (MPa)}$$

\*Please add the suffixes below according to the material / surface required.

Order code suffixes					
Material	Suffix surface and material	Example only 4 bolt flange	Example 4 bolt flange incl. metr. screws and O-ring	Example 4 bolt flange incl. UNC screws and O-ring	Standard sealing material (no additional suffix needed)
Steel, zinc plated, chrome <sup>6</sup> -free	CF	PAFG080GCF	PAFG080GCFM	PAFG080GCFU	NBR
Steel, zinc yellow plated	A3C	PAFG080GA3C	PAFG080GA3CM	PAFG080GA3CU	NBR
Stainless steel	SS	PAFG080GSS	PAFG080GSSM	PAFG080GSSU	VIT

**PAFG-90G SAE 90° 4 bolt flange with BSPP 60° cone end**

 SAE 90° Flange / BSPP 60° cone end  
 (ISO 6162-1/-2) (ISO 8434-6)

**3000 PSI Series**

Nom. flange size		T1	D3	L1	L2	LA	LB	LX	LY	LZ	DB	Screws		Weight (steel) kg/piece	Order code*	PN (bar) <sup>1)</sup>	
SAE (in)	ISO (DN)											(metr.)	(unc.)			A3C	SS
1/2	13	G3/8	10	17	16	60	57	17.5	38.1	37	9.0	M 8×30	5/16×1 1/4	0.27	PAFG080/90G38	348	348
1/2	13	G1/2	12	17	16	60	57	17.5	38.1	39	9.0	M 8×30	5/16×1 1/4	0.31	PAFG080/90G	348	348
1/2	13	G3/4	13	20	16	60	57	17.5	38.1	40	9.0	M 8×30	5/16×1 1/4	0.31	PAFG080/90G34	348	348
3/4	19	G1/2	12	20	18	63	66	22.3	47.6	41	11.0	M10×35	3/8×1 1/2	0.47	PAFG100/90G12	348	348
3/4	19	G3/4	17	20	18	63	66	22.3	47.6	44	11.0	M10×35	3/8×1 1/2	0.42	PAFG100/90G	348	348
3/4	19	G1	19	25	18	63	66	22.3	47.6	45	11.0	M10×35	3/8×1 1/2	0.60	PAFG100/90G1	348	348
1	25	G3/4	17	20	19	80	71	26.2	52.4	47	11.0	M10×35	3/8×1 1/2	0.66	PAFG102/90G34	348	348
1	25	G1	22	25	19	80	71	26.2	52.4	48	11.0	M10×35	3/8×1 1/2	0.62	PAFG102/90G	348	348
1	25	G1 1/4	25	31	19	80	71	26.2	52.4	49	11.0	M10×35	3/8×1 1/2	0.65	PAFG102/90G114	348	348
1 1/4	32	G1	22	25	22	84	80	30.2	58.7	54	11.5	M10×35	7/16×1 1/2	1.06	PAFG104/90G1	278	278
1 1/4	32	G1 1/4	27	31	22	84	80	30.2	58.7	55	11.5	M10×35	7/16×1 1/2	0.93	PAFG104/90G	278	278
1 1/4	32	G1 1/2	31	37	22	84	80	30.2	58.7	56	11.5	M10×40	7/16×1 1/2	0.96	PAFG104/90G112	278	278
1 1/2	38	G1 1/4	27	31	25	88	94	35.7	69.9	59	13.5	M12×45	1/2×1 3/4	1.44	PAFG106/90G114	210	210
1 1/2	38	G1 1/2	34	37	25	88	94	35.7	69.9	61	13.5	M12×45	1/2×1 3/4	1.35	PAFG106/90G	210	210

**6000 PSI Series**

1/2	13	G3/8	10	17	16	60	57	18.2	40.5	37	9.0	M 8×30	5/16×1 1/4	0.30	PAFG401/90G38	420	420
1/2	13	G1/2	12	17	16	60	57	18.2	40.5	39	9.0	M 8×30	5/16×1 1/4	0.32	PAFG401/90G	420	420
1/2	13	G3/4	13	20	16	60	57	18.2	40.5	40	9.0	M 8×30	5/16×1 1/4	0.35	PAFG401/90G34	420	420
3/4	19	G1/2	12	20	19	68	71	23.8	50.8	45	11.0	M10×35	3/8×1 1/2	0.53	PAFG402/90G12	420	420
3/4	19	G3/4	17	20	19	68	71	23.8	50.8	48	11.0	M10×35	3/8×1 1/2	0.53	PAFG402/90G	420	420
3/4	19	G1	19	25	19	68	71	23.8	50.8	50	11.0	M10×35	3/8×1 1/2	0.53	PAFG402/90G1	420	420
1	25	G3/4	17	25	24	83	80	27.8	57.2	52	13.0	M12×45	7/16×1 1/2	0.90	PAFG403/90G34	420	420
1	25	G1	22	25	24	83	80	27.8	57.2	54	13.0	M12×45	7/16×1 1/2	0.90	PAFG403/90G	420	420
1	25	G1 1/4	25	31	24	83	80	27.8	57.2	55	13.0	M12×45	7/16×1 1/2	0.90	PAFG403/90G114	420	420
1 1/4	32	G1	22	31	25	97	94	31.8	66.6	59	15.0	M14×45	1/2×1 3/4	1.35	PAFG404/90G1	420	420
1 1/4	32	G1 1/4	27	31	25	97	94	31.8	66.6	59	15.0	M14×45	1/2×1 3/4	1.40	PAFG404/90G	420	420
1 1/4	32	G1 1/2	31	37	25	97	94	31.8	66.6	61	15.0	M14×45	1/2×1 3/4	1.45	PAFG404/90G112	420	420
1 1/2	38	G1 1/4	27	37	26	110	106	36.5	79.3	64	17.0	M16×50	5/8×2	1.80	PAFG405/90G114	420	420
1 1/2	38	G1 1/2	32	37	26	110	106	36.5	79.3	66	17.0	M16×50	5/8×2	1.85	PAFG405/90G	420	420

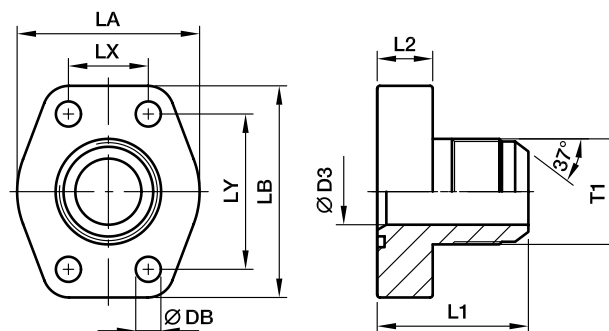
1) Pressure shown = Item deliverable

$$\frac{\text{PN (bar)}}{10} = \text{PN (MPa)}$$

\*Please add the suffixes below according to the material / surface required.

Order code suffixes					
Material	Suffix surface and material	Example only 4 bolt flange	Example 4 bolt flange incl. metr. screws and O-ring	Example 4 bolt flange incl. UNC screws and O-ring	Standard sealing material (no additional suffix needed)
Steel, zinc plated, chrome <sup>6</sup> -free	CF	PAFG080/90GCF	PAFG080/90GCFM	PAFG080/90GCFU	NBR
Steel, zinc yellow plated	A3C	PAFG080/90GA3C	PAFG080/90GA3CM	PAFG080/90GA3CU	NBR
Stainless steel	SS	PAFG080/90GSS	PAFG080/90GSSM	PAFG080/90GSSU	VIT

**PAFG-X SAE Straight 4 bolt flange with Triple-Lok® 37° flare end**

 SAE Flange / Triple-Lok® 37° flare end  
 (ISO 6162-1/-2)

**3000 PSI Series**

Nom. flange size		T1	D3	L1	L2	LA	LB	LX	LY	DB	Screws		Weight (steel) kg/piece	Order code*	PN (bar) <sup>1)</sup>	
SAE (in)	ISO (DN)										(metr.)	(unc.)			A3C	SS
1/2	13	<b>3/4-16UNF-2A</b>	9.9	41	16	47	57	17.5	38.1	9.0	M 8×30	5/16×1 1/4	0.25	<b>PAFG080X-A</b>	348	348
1/2	13	<b>7/8-14UNF-2A</b>	12.3	41	16	47	57	17.5	38.1	9.0	M 8×30	5/16×1 1/4	0.29	<b>PAFG080X-B</b>	348	348
1/2	13	<b>1 1/16-12UN-2A</b>	12.3	46	16	47	57	17.5	38.1	9.0	M 8×30	5/16×1 1/4	0.32	<b>PAFG080X-C</b>	348	348
3/4	19	<b>7/8-14UN-2A</b>	12.3	47	18	50	66	22.3	47.6	11.0	M10×35	3/8×1 1/2	0.35	<b>PAFG100X-A</b>	348	348
3/4	19	<b>1 1/16-12UN-2A</b>	15.5	49	18	50	66	22.3	47.6	11.0	M10×35	3/8×1 1/2	0.34	<b>PAFG100X-B</b>	348	348
3/4	19	<b>1 5/16-12UN-2A</b>	21.5	50	18	50	66	22.3	47.6	11.0	M10×35	3/8×1 1/2	0.37	<b>PAFG100X-C</b>	348	348
1	25	<b>1 1/16-12UN-2A</b>	15.5	51	18	53	71	26.2	52.4	11.0	M10×35	3/8×1 1/2	0.44	<b>PAFG102X-A</b>	348	348
1	25	<b>1 5/16-12UN-2A</b>	21.5	52	18	53	71	26.2	52.4	11.0	M10×35	3/8×1 1/2	0.46	<b>PAFG102X-B</b>	348	348
1	25	<b>1 5/8-12UN-2A</b>	27.5	54	18	53	71	26.2	52.4	11.0	M10×35	3/8×1 1/2	0.50	<b>PAFG102X-C</b>	348	348
1 1/4	32	<b>1 5/16-12UN-2A</b>	21.5	56	21	69	80	30.2	58.7	11.5	M10×35	7/16×1 1/2	0.65	<b>PAFG104X-A</b>	278	278
1 1/4	32	<b>1 5/8-12UN-2A</b>	27.5	58	21	69	80	30.2	58.7	11.5	M10×35	7/16×1 1/2	0.70	<b>PAFG104X-B</b>	278	278
1 1/4	32	<b>1 7/8-12UN-2A</b>	33.0	61	21	69	80	30.2	58.7	11.5	M10×40	7/16×1 1/2	0.72	<b>PAFG104X-C</b>	278	278
1 1/2	38	<b>1 5/8-12UN-2A</b>	27.5	64	24	77	94	35.7	69.9	13.5	M12×45	1/2×1 3/4	1.00	<b>PAFG106X-A</b>	210	210
1 1/2	38	<b>1 7/8-12UN-2A</b>	33.0	67	24	77	94	35.7	69.9	13.5	M12×45	1/2×1 3/4	1.00	<b>PAFG106X-B</b>	210	210

**6000 PSI Series**

1/2	13	<b>3/4-16UNF-2A</b>	9.9	42	16	47	57	18.2	40.5	9.0	M 8×30	5/16×1 1/4	0.30	<b>PAFG401X-A</b>	350	350
1/2	13	<b>7/8-14UNF-2A</b>	12.3	45	16	47	57	18.2	40.5	9.0	M 8×30	5/16×1 1/4	0.32	<b>PAFG401X-B</b>	350	350
1/2	13	<b>1 1/16-12UN-2A</b>	12.3	47	16	47	57	18.2	40.5	9.0	M 8×30	5/16×1 1/4	0.35	<b>PAFG401X-C</b>	350	350
3/4	19	<b>7/8-14UN-2A</b>	12.3	49	18	53	71	23.8	50.8	11.0	M10×35	3/8×1 1/2	0.68	<b>PAFG402X-A</b>	350	350
3/4	19	<b>1 1/16-12UN-2A</b>	15.5	51	18	53	71	23.8	50.8	11.0	M10×35	3/8×1 1/2	0.73	<b>PAFG402X-B</b>	350	350
3/4	19	<b>1 5/16-12UN-2A</b>	21.5	52	18	53	71	23.8	50.8	11.0	M10×35	3/8×1 1/2	0.82	<b>PAFG402X-C</b>	350	350
1	25	<b>1 1/16-12UN-2A</b>	15.5	58	21	66	80	27.8	57.2	13.0	M12×45	7/16×1 1/2	1.00	<b>PAFG403X-A</b>	350	350
1	25	<b>1 5/16-12UN-2A</b>	21.5	59	21	66	80	27.8	57.2	13.0	M12×45	7/16×1 1/2	1.15	<b>PAFG403X-B</b>	350	350
1	25	<b>1 5/8-12UN-2A</b>	27.5	61	21	66	80	27.8	57.2	13.0	M12×45	7/16×1 1/2	1.20	<b>PAFG403X-C</b>	275	275
1 1/4	32	<b>1 5/16-12UN-2A</b>	21.5	64	24	78	94	31.8	66.6	15.0	M14×45	1/2×1 3/4	1.60	<b>PAFG404X-A</b>	350	350
1 1/4	32	<b>1 5/8-12UN-2A</b>	27.5	66	24	78	94	31.8	66.6	15.0	M14×45	1/2×1 3/4	1.80	<b>PAFG404X-B</b>	275	275
1 1/4	32	<b>1 7/8-12UN-2A</b>	33.0	69	24	78	94	31.8	66.6	15.0	M14×45	1/2×1 3/4	1.85	<b>PAFG404X-C</b>	210	210
1 1/2	38	<b>1 5/8-12UN-2A</b>	27.5	70	27	90	106	36.5	79.3	17.0	M16×50	5/8×2	2.20	<b>PAFG405X-A</b>	275	275
1 1/2	38	<b>1 7/8-12UN-2A</b>	33.0	73	27	90	106	36.5	79.3	17.0	M16×50	5/8×2	2.25	<b>PAFG405X-B</b>	210	210

1) Pressure shown = Item deliverable

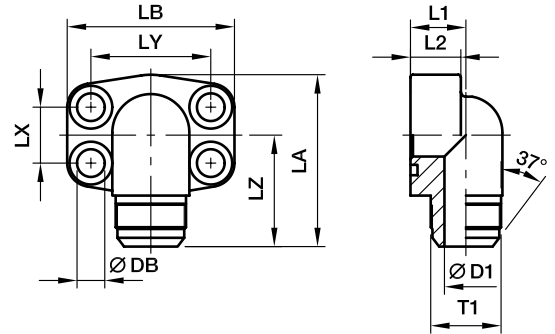
$$\frac{\text{PN (bar)}}{10} = \text{PN (MPa)}$$

\*Please add the suffixes below according to the material / surface required.

Order code suffixes					
Material	Suffix surface and material	Example only 4 bolt flange	Example 4 bolt flange incl. metr. screws and O-ring	Example 4 bolt flange incl. UNC screws and O-ring	Standard sealing material (no additional suffix needed)
Steel, zinc plated, chrome <sup>6</sup> -free	CF	PAFG080X-ACF	PAFG080X-ACFM	PAFG080X-ACFU	NBR
Steel, zinc yellow plated	A3C	PAFG080X-AA3C	PAFG080X-AA3CM	PAFG080X-AA3CU	NBR
Stainless steel	SS	PAFG080X-ASS	PAFG080X-ASSM	PAFG080X-ASSU	VIT

**PAFG-90X SAE 90° 4 bolt flange with Triple-Lok® 37° flare end**

SAE 90° Flange / Triple-Lok® 37° flare end  
(ISO 6162-1/-2)



**3000 PSI Series**

Nom. flange size												Screws		Weight (steel) kg/piece	Order code*	PN (bar) <sup>1)</sup>	
SAE (in)	ISO (DN)	T1	D1	L1	L2	LA	LB	LX	LY	LZ	DB	(metr.)	(unc.)			A3C	SS
1/2	13	3/4-16	9.9	17	16	60	56	17.5	38.1	40	9.0	M 8×30	5/16×1 1/4	0.27	PAFG080/90X-A	348	348
1/2	13	7/8-14	12.3	17	16	60	56	17.5	38.1	42	9.0	M 8×30	5/16×1 1/4	0.31	PAFG080/90X-B	348	348
1/2	13	1 1/16-12	12.3	20	16	60	56	17.5	38.1	43	9.0	M 8×30	5/16×1 1/4	0.31	PAFG080/90X-C	348	348
3/4	19	7/8-14	12.3	20	18	63	66	22.3	47.6	45	11.0	M10×35	3/8×1 1/2	0.47	PAFG100/90X-A	348	348
3/4	19	1 1/16-12	15.5	20	18	63	66	22.3	47.6	47	11.0	M10×35	3/8×1 1/2	0.42	PAFG100/90X-B	348	348
3/4	19	1 5/16-12	21.5	25	18	63	66	22.3	47.6	48	11.0	M10×35	3/8×1 1/2	0.60	PAFG100/90X-C	348	348
1	25	1 1/16-12	15.5	20	19	80	71	26.2	52.4	50	11.0	M10×35	3/8×1 1/2	0.66	PAFG102/90X-A	348	348
1	25	1 5/16-12	21.5	25	19	80	71	26.2	52.4	51	11.0	M10×35	3/8×1 1/2	0.62	PAFG102/90X-B	348	348
1 1/4	32	1 5/16-12	21.5	25	22	84	80	30.2	58.7	56	11.5	M10×35	3/8×1 1/2	1.06	PAFG104/90X-A	278	278
1 1/4	32	1 5/8-12	27.5	31	22	84	80	30.2	58.7	58	11.5	M10×35	7/16×1 1/2	0.93	PAFG104/90X-B	278	278
1 1/4	32	1 7/8-12	33.0	37	22	84	80	30.2	58.7	61	11.5	M10×35	7/16×1 1/2	0.96	PAFG104/90X-C	278	278
1 1/2	38	1 5/8-12	27.5	31	25	88	94	35.7	69.9	63	13.5	M10×40	7/16×1 1/2	1.44	PAFG106/90X-A	210	210
1 1/2	38	1 7/8-12	33.0	37	25	88	94	35.7	69.9	66	13.5	M12×45	1/2×1 3/4	1.35	PAFG106/90X-B	210	210

**6000 PSI Series**

1/2	13	3/4-16	9.9	17	16	60	57	18.2	40.5	40	9.0	M 8×30	5/16×1 1/4	0.30	PAFG401/90X-A	350	350
1/2	13	7/8-14	12.3	17	16	60	57	18.2	40.5	42	9.0	M 8×30	5/16×1 1/4	0.32	PAFG401/90X-B	350	350
1/2	13	1 1/16-12	12.3	20	16	60	57	18.2	40.5	43	9.0	M 8×30	5/16×1 1/4	0.35	PAFG401/90X-C	350	350
3/4	19	7/8-14	12.3	20	19	68	71	23.8	50.8	49	11.0	M10×35	3/8×1 1/2	0.53	PAFG402/90X-A	350	350
3/4	19	1 1/16-12	15.5	20	19	68	71	23.8	50.8	51	11.0	M10×35	3/8×1 1/2	0.53	PAFG402/90X-B	350	350
3/4	19	1 5/16-12	21.5	25	19	68	71	23.8	50.8	52	11.0	M10×35	3/8×1 1/2	0.53	PAFG402/90X-C	350	350
1	25	1 1/16-12	15.5	25	24	83	80	27.8	57.2	55	13.0	M12×45	7/16×1 1/2	0.90	PAFG403/90X-A	350	350
1	25	1 5/16-12	21.5	25	24	83	80	27.8	57.2	56	13.0	M12×45	7/16×1 1/2	0.90	PAFG403/90X-B	350	350
1	25	1 5/8-12	27.5	31	24	83	80	27.8	57.2	58	13.0	M12×45	7/16×1 1/2	0.90	PAFG403/90X-C	275	275
1 1/4	32	1 5/16-12	21.5	31	25	97	94	31.8	66.6	56	15.0	M14×45	1/2×1 3/4	1.35	PAFG404/90X-A	350	350
1 1/4	32	1 5/8-12	27.5	31	25	97	94	31.8	66.6	63	15.0	M14×45	1/2×1 3/4	1.40	PAFG404/90X-B	275	275
1 1/4	32	1 7/8-12	33.0	37	25	97	94	31.8	66.6	63	15.0	M14×45	1/2×1 3/4	1.45	PAFG404/90X-C	210	210
1 1/2	38	1 5/8-12	27.5	37	26	110	106	36.5	79.3	67	17.0	M16×50	5/8×2	1.80	PAFG405/90X-A	275	275
1 1/2	38	1 7/8-12	33.0	37	26	110	106	36.5	79.3	70	17.0	M16×50	5/8×2	1.85	PAFG405/90X-B	210	210

1) Pressure shown = Item deliverable

$$\frac{PN \text{ (bar)}}{10} = PN \text{ (MPa)}$$

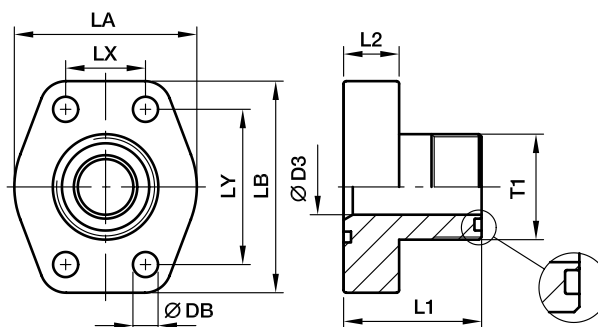
\*Please add the suffixes below according to the material / surface required.

Order code suffixes					
Material	Suffix surface and material	Example only 4 bolt flange	Example 4 bolt flange incl. metr. screws and O-ring	Example 4 bolt flange incl. UNC screws and O-ring	Standard sealing material (no additional suffix needed)
Steel, zinc plated, chrome <sup>6</sup> -free	CF	PAFG080/90X-ACF	PAFG080/90X-ACFM	PAFG080/90X-ACFU	NBR
Steel, zinc yellow plated	A3C	PAFG080/90X-AA3C	PAFG080/90X-AA3CM	PAFG080/90X-AA3CU	NBR
Stainless steel	SS	PAFG080/90X-ASS	PAFG080/90X-ASSM	PAFG080/90X-ASSU	VIT



## PAFG-L SAE Straight 4 bolt flange with O-Lok® ORFS end

SAE Flange / O-Lok® ORFS end  
(ISO 6162-1/-2)



### 3000 PSI Series

Nom. flange size		T1	D3	L1	L2	LA	LB	LX	LY	DB	Screws		Weight (steel) kg/piece	Order code*	PN (bar) <sup>1)</sup>	
SAE (in)	ISO (DN)										(metr.)	(unc.)			A3C	SS
1/2	13	<b>11/16-16UN-2A</b>	6	37	16	47	56	17.5	38.1	9.0	M 8×30	5/16×1 1/4	0.24	<b>PAFG080L-A</b>	348	348
1/2	13	<b>13/16-16UN-2A</b>	9	39	16	47	56	17.5	38.1	9.0	M 8×30	5/16×1 1/4	0.25	<b>PAFG080L-B</b>	348	348
1/2	13	<b>1-14UN-2A</b>	12	42	16	47	56	17.5	38.1	9.0	M 8×30	5/16×1 1/4	0.27	<b>PAFG080L-C</b>	348	348
3/4	19	<b>1-14UN-2A</b>	12	45	18	50	66	22.3	47.6	11.0	M10×35	3/8×1 1/2	0.44	<b>PAFG100L-A</b>	348	348
3/4	19	<b>1 3/16-12UN-2A</b>	15	47	18	50	66	22.3	47.6	11.0	M10×35	3/8×1 1/2	0.46	<b>PAFG100L-B</b>	348	348
1	25	<b>1 3/16-12UN-2A</b>	15	49	18	53	71	26.2	52.4	11.0	M10×35	3/8×1 1/2	0.53	<b>PAFG102L-A</b>	348	348
1	25	<b>1 7/16-12UN-2A</b>	20	49	18	53	71	26.2	52.4	11.0	M10×35	3/8×1 1/2	0.52	<b>PAFG102L-B</b>	348	348
1 1/4	32	<b>1 7/16-12UN-2A</b>	20	53	21	69	80	30.2	58.7	11.5	M10×35	7/16×1 1/2	0.75	<b>PAFG104L-A</b>	278	278
1 1/4	32	<b>1 11/16-12UN-2A</b>	26	53	21	69	80	30.2	58.7	11.5	M10×35	7/16×1 1/2	0.78	<b>PAFG104L-B</b>	278	278
1 1/2	38	<b>1 11/16-12UN-2A</b>	26	61	24	77	94	35.7	69.9	13.5	M12×45	1/2×1 3/4	1.20	<b>PAFG106L-A</b>	210	210
1 1/2	38	<b>2-12UN-2A</b>	32	61	24	77	94	35.7	69.9	13.5	M12×45	1/2×1 3/4	1.25	<b>PAFG106L-B</b>	210	210

### 6000 PSI Series

1/2	13	<b>11/16-16UN-2A</b>	6	38	16	47	57	18.2	40.5	9.0	M 8×30	5/16×1 1/4	0.25	<b>PAFG401L-A</b>	420	420
1/2	13	<b>13/16-16UN-2A</b>	9	40	16	47	57	18.2	40.5	9.0	M 8×30	5/16×1 1/4	0.27	<b>PAFG401L-B</b>	420	420
1/2	13	<b>1-14UN-2A</b>	12	43	16	47	57	18.2	40.5	9.0	M 8×30	5/16×1 1/4	0.31	<b>PAFG401L-C</b>	420	420
3/4	19	<b>1-14UN-2A</b>	12	47	18	53	71	23.8	50.8	11.0	M10×35	3/8×1 1/2	0.56	<b>PAFG402L-A</b>	420	420
3/4	19	<b>1 3/16-12UN-2A</b>	15	49	18	53	71	23.8	50.8	11.0	M10×35	3/8×1 1/2	0.65	<b>PAFG402L-B</b>	420	420
1	25	<b>1 3/16-12UN-2A</b>	15	56	21	66	80	27.8	57.2	13.0	M12×45	7/16×1 1/2	0.62	<b>PAFG403L-A</b>	420	420
1	25	<b>1 7/16-12UN-2A</b>	20	56	21	66	80	27.8	57.2	13.0	M12×45	7/16×1 1/2	0.66	<b>PAFG403L-B</b>	420	420
1 1/4	32	<b>1 7/16-12UN-2A</b>	20	61	24	78	94	31.8	66.6	15.0	M14×45	1/2×1 3/4	0.95	<b>PAFG404L-A</b>	345	345
1 1/4	32	<b>1 11/16-12UN-2A</b>	26	61	24	78	94	31.8	66.6	15.0	M14×45	1/2×1 3/4	1.08	<b>PAFG404L-B</b>	345	345
1 1/2	38	<b>1 11/16-12UN-2A</b>	26	65	27	90	106	36.5	79.3	17.0	M16×50	5/8×2	1.66	<b>PAFG405L-A</b>	310	310
1 1/2	38	<b>2-12UN-2A</b>	32	67	27	90	106	36.5	79.3	17.0	M16×50	5/8×2	1.75	<b>PAFG405L-B</b>	310	310

1) Pressure shown = Item deliverable

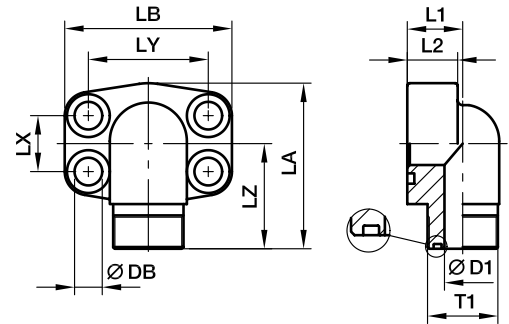
$$\frac{PN \text{ (bar)}}{10} = PN \text{ (MPa)}$$

\*Please add the suffixes below according to the material / surface required.

Order code suffixes					
Material	Suffix surface and material	Example only 4 bolt flange	Example 4 bolt flange incl. metr. screws and O-ring	Example 4 bolt flange incl. UNC screws and O-ring	Standard sealing material (no additional suffix needed)
Steel, zinc plated, chrome <sup>6</sup> -free	CF	PAFG080L-ACF	PAFG080L-ACFM	PAFG080L-ACFU	NBR
Steel, zinc yellow plated	A3C	PAFG080L-AA3C	PAFG080L-AA3CM	PAFG080L-AA3CU	NBR
Stainless steel	SS	PAFG080L-ASS	PAFG080L-ASSM	PAFG080L-ASSU	VIT

**PAFG-90L SAE 90° 4 bolt flange with O-Lok® ORFS end**

SAE 90° Flange / O-Lok® ORFS end  
(ISO 6162-1/-2)



**3000 PSI Series**

Nom. flange size		T1	D1	L1	L2	LA	LB	LX	LY	LZ	DB	Screws		Weight (steel) kg/piece	Order code*	PN (bar) <sup>1)</sup>	
SAE (in)	ISO (DN)											(metr.)	(unc.)			A3C	SS
1/2	13	<b>11/16-16UN-2A</b>	6	17	16	60	56	17.5	38.1	37	9.0	M 8×30	5/16×1 1/4	0.26	<b>PAFG080/90L-A</b>	348	348
1/2	13	<b>13/16-16UN-2A</b>	9	17	16	60	56	17.5	38.1	39	9.0	M 8×30	5/16×1 1/4	0.29	<b>PAFG080/90L-B</b>	348	348
1/2	13	<b>1-14UN-2A</b>	12	20	16	60	56	17.5	38.1	40	9.0	M 8×30	5/16×1 1/4	0.31	<b>PAFG080/90L-C</b>	348	348
3/4	19	<b>1-14UN-2A</b>	12	20	18	63	66	22.3	47.6	44	11.0	M10×35	3/8×1 1/2	0.63	<b>PAFG100/90L-A</b>	348	348
3/4	19	<b>1 3/16-12UN-2A</b>	15	25	18	63	66	22.3	47.6	45	11.0	M10×35	3/8×1 1/2	0.64	<b>PAFG100/90L-B</b>	348	348
1	25	<b>1 3/16-12UN-2A</b>	15	25	19	80	71	26.2	52.4	48	11.0	M10×35	3/8×1 1/2	0.63	<b>PAFG102/90L-A</b>	348	348
1	25	<b>1 7/16-12UN-2A</b>	20	31	19	80	71	26.2	52.4	49	11.0	M10×35	3/8×1 1/2	0.66	<b>PAFG102/90L-B</b>	348	348
1 1/4	32	<b>1 7/16-12UN-2A</b>	20	31	22	84	80	30.2	58.7	55	11.5	M10×35	7/16×1 1/2	1.02	<b>PAFG104/90L-A</b>	278	278
1 1/4	32	<b>1 11/16-12UN-2A</b>	26	31	22	84	80	30.2	58.7	55	11.5	M10×35	7/16×1 1/2	1.08	<b>PAFG104/90L-B</b>	278	278
1 1/2	38	<b>1 11/16-12UN-2A</b>	26	31	25	88	94	35.7	69.9	59	13.5	M12×45	1/2×1 3/4	1.66	<b>PAFG106/90L-A</b>	210	210
1 1/2	38	<b>2-12UN-2A</b>	32	37	25	88	94	35.7	69.9	61	13.5	M12×45	1/2×1 3/4	1.68	<b>PAFG106/90L-B</b>	210	210

**6000 PSI Series**

1/2	13	<b>11/16-16UN-2A</b>	16	17	16	60	57	18.2	40.5	37	9.0	M 8×30	5/16×1 1/4	0.27	<b>PAFG401/90L-A</b>	420	420
1/2	13	<b>13/16-16UN-2A</b>	16	17	16	60	57	18.2	40.5	39	9.0	M 8×30	5/16×1 1/4	0.30	<b>PAFG401/90L-B</b>	420	420
1/2	13	<b>1-14UN-2A</b>	16	20	16	60	57	18.2	40.5	40	9.0	M 8×30	5/16×1 1/4	0.32	<b>PAFG401/90L-C</b>	420	420
3/4	19	<b>1-14UN-2A</b>	19	20	19	68	71	23.8	50.8	48	11.0	M10×35	3/8×1 1/2	0.64	<b>PAFG402/90L-A</b>	420	420
3/4	19	<b>1 3/16-12UN-2A</b>	19	25	19	68	71	23.8	50.8	50	11.0	M10×35	3/8×1 1/2	0.65	<b>PAFG402/90L-B</b>	420	420
1	25	<b>1 3/16-12UN-2A</b>	24	25	24	83	80	27.8	57.2	54	13.0	M12×45	7/16×1 1/2	0.64	<b>PAFG403/90L-A</b>	420	420
1	25	<b>1 7/16-12UN-2A</b>	24	31	24	83	80	27.8	57.2	55	13.0	M12×45	7/16×1 1/2	0.67	<b>PAFG403/90L-B</b>	420	420
1 1/4	32	<b>1 7/16-12UN-2A</b>	25	31	25	97	94	31.8	66.6	59	15.0	M14×45	1/2×1 3/4	1.04	<b>PAFG404/90L-A</b>	420	420
1 1/4	32	<b>1 11/16-12UN-2A</b>	25	31	25	97	94	31.8	66.6	59	15.0	M14×45	1/2×1 3/4	1.10	<b>PAFG404/90L-B</b>	345	345
1 1/2	38	<b>1 11/16-12UN-2A</b>	26	37	26	110	106	36.5	79.3	64	17.0	M16×50	5/8×2	1.69	<b>PAFG405/90L-A</b>	345	345
1 1/2	38	<b>2-12UN-2A</b>	26	37	26	110	106	36.5	79.3	66	17.0	M16×50	5/8×2	1.71	<b>PAFG405/90L-B</b>	310	310

1) Pressure shown = Item deliverable

$$\frac{PN \text{ (bar)}}{10} = PN \text{ (MPa)}$$

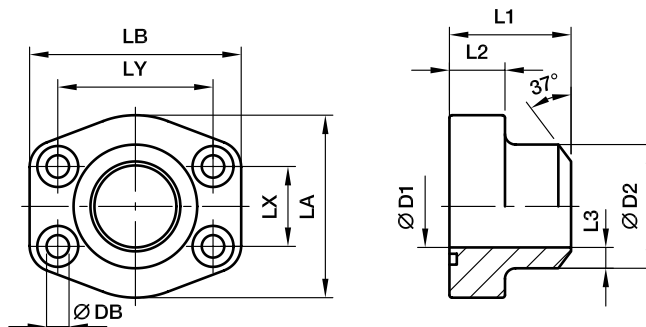
\*Please add the suffixes below according to the material / surface required.

Order code suffixes					
Material	Suffix surface and material	Example only 4 bolt flange	Example 4 bolt flange incl. metr. screws and O-ring	Example 4 bolt flange incl. UNC screws and O-ring	Standard sealing material (no additional suffix needed)
Steel, zinc plated, chrome <sup>6</sup> -free	CF	PAFG080/90L-ACF	PAFG080/90L-ACFM	PAFG080/90L-ACFU	NBR
Steel, zinc yellow plated	A3C	PAFG080/90L-AA3C	PAFG080/90L-AA3CM	PAFG080/90L-AA3CU	NBR
Stainless steel	SS	PAFG080/90L-ASS	PAFG080/90L-ASSM	PAFG080/90L-ASSU	VIT



## PAFS-B SAE Straight 4 bolt flange (butt weld)

SAE Flange / Butt weld tube end  
(ISO 6162-1/-2)



### 3000 PSI Series

Nom. flange size		max.											Screws		Weight (steel) kg/piece	Order code*	PN (bar) <sup>1)</sup>	
SAE (in)	ISO (DN)		D1	D2	L1	L2	L3	LA	LB	LX	LY	DB	(metr.)	(unc.)			S	SS
1/2	13	21.3	13	21.6	36	16	4.3	46	58	17.5	38.1	9.0	M 8×30	5/16×1 1/4	0.28	<b>PAFS080B</b>	345	345
3/4	19	26.9	19	27.2	36	18	4.1	49	66	22.3	47.6	10.5	M10×35	3/8×1 1/2	0.39	<b>PAFS100B</b>	345	345
1	25	33.7	25	34.5	38	18	4.7	53	71	26.2	52.4	10.5	M10×35	3/8×1 1/2	0.46	<b>PAFS102B</b>	345	345
1 1/4	32	42.4	31	42.8	41	21	3.0	69	80	30.2	58.7	10.5	M10×40	7/16×1 1/2	0.66	<b>PAFS104B</b>	276	276
1 1/2	38	48.3	38	48.6	44	25	5.3	77	94	35.7	69.9	13.5	M12×45	1/2×1 3/4	1.05	<b>PAFS106B</b>	207	207
2	51	60.3	50	61.0	45	25	5.5	89	103	42.9	77.8	13.5	M12×45	1/2×1 3/4	1.19	<b>PAFS108B</b>	207	207
2 1/2	64	76.1	63	76.6	50	25	6.8	101	115	50.8	88.9	13.5	M12×45	1/2×1 3/4	1.40	<b>PAFS110B</b>	172	172
3	76	88.9	73	89.0	50	27	8.0	124	135	61.9	106.4	17.0	M16×50	5/8×2	2.15	<b>PAFS112B</b>	138	138
3 1/2	89	101.6	89	103.0	50	27	7.0	134	153	69.9	120.7	17.0	M16×50	5/8×2	2.40	<b>PAFS114B</b>	34	34
4	102	114.3	99	115.0	50	27	8.0	147	163	77.8	130.2	17.0	M16×50	5/8×2	2.85	<b>PAFS116B</b>	34	34
5	127	140.0	120	141.0	50	28	10.5	180	184	92.1	152.4	17.0	M16×50	5/8×2	4.85	<b>PAFS118B</b>	34	34

### 6000 PSI Series

1/2	13	17.2	10	17.5	36	18	3.7	46	58	18.2	40.5	9.0	M 8×30	5/16×1 1/4	0.26	<b>PAFS401B38</b>	420	420
1/2	13	21.3	13	21.6	36	18	4.3	46	58	18.2	40.5	9.0	M 8×30	5/16×1 1/4	0.29	<b>PAFS401B</b>	420	420
3/4	19	26.9	18	27.2	36	18	4.6	53	71	23.8	50.8	10.5	M10×35	3/8×1 1/2	0.50	<b>PAFS402B</b>	420	420
1	25	33.7	22	34.5	44	24	6.3	66	80	27.8	57.2	10.5	M12×45	1/2×1 3/4	0.76	<b>PAFS403B</b>	420	420
1 1/4	32	42.4	28	42.8	44	25	7.4	77	94	31.8	66.6	15.0	M14×45	1/2×1 3/4	1.35	<b>PAFS404B</b>	420	420
1 1/2	38	48.3	32	48.6	51	29	8.3	89	106	36.5	79.3	17.0	M16×50	5/8×2	1.80	<b>PAFS405B</b>	420	420
2	51	60.3	41	61.0	70	35	10.0	116	135	44.5	96.8	21.0	M20×65	3/4×2 1/2	2.45	<b>PAFS406B</b>	420	420
2 1/2	64	76.1	50	76.6	75	45	13.0	150	166	58.7	123.8	25.0	M24×85	-	6.25	<b>PAFS407B</b>	420	420
3	76	88.9	58	90.0	90	55	16.0	178	208	71.4	152.4	32.0	M30×110	-	8.10	<b>PAFS408B</b>	420	420

1) Pressure shown = Item deliverable

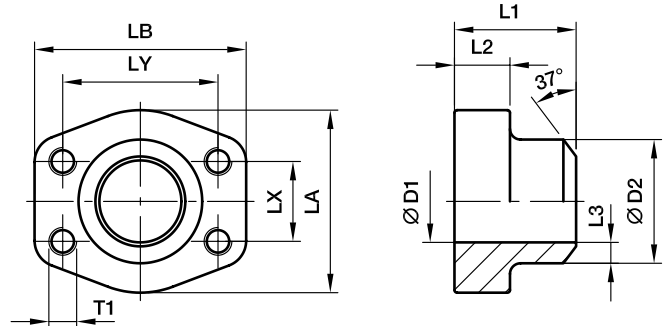
$$\frac{\text{PN (bar)}}{10} = \text{PN (MPa)}$$

The pressures given here are the maximum allowable for the flange fittings. If the pipe or tube used has a lower pressure rating, then the welded assembly rating will be the lower one, assuming the weld is adequately strong.

\*Please add the suffixes below according to the material / surface required.

Order code suffixes					
Material	Suffix surface and material	Example only 4 bolt flange	Example 4 bolt flange incl. metr. screws and O-ring	Example 4 bolt flange incl. UNC screws and O-ring	Standard sealing material (no additional suffix needed)
Steel, blanc oil dipped	S	PAFS080BS	PAFS080BSM	PAFS080BSU	NBR
Stainless steel	SS	PAFS080BSS	PAFS080BSSM	PAFS080BSSU	VIT

**PGFS-B SAE Straight 4 bolt counter flange (butt weld)**

 SAE Counter flange / Butt weld tube end  
 (ISO 6162-1/-2)

**3000 PSI Series**

Nom. flange size		max.											T1		Weight (steel) kg/piece	Order code*	PN (bar) <sup>1)</sup>	
SAE (in)	ISO (DN)		D1	D2	L1	L2	L3	LA	LB	LX	LY	(metr.)	(unc.)	S			SS	
1/2	13	21.3	13	21.6	36	16	4.3	47	57	17.5	38.1	M 8	5/16	0.25	<b>PGFS080B</b>	345	345	
3/4	19	26.9	19	27.2	36	18	4.1	49	66	22.3	47.6	M10	3/8	0.35	<b>PGFS100B</b>	345	345	
1	25	33.7	25	34.5	38	18	4.7	53	71	26.2	52.4	M10	3/8	0.46	<b>PGFS102B</b>	345	345	
1 1/4	32	42.4	31	42.8	41	21	6.0	69	80	30.2	58.7	M10	7/16	0.66	<b>PGFS104B</b>	276	276	
1 1/2	38	48.3	38	48.6	44	25	5.3	77	94	35.7	69.9	M12	1/2	1.05	<b>PGFS106B</b>	207	207	
2	51	60.3	50	61.0	45	25	5.5	89	103	42.9	77.8	M12	1/2	1.19	<b>PGFS108B</b>	207	207	
2 1/2	64	76.1	63	76.6	50	25	6.8	101	115	50.8	88.9	M12	1/2	1.40	<b>PGFS110B</b>	172	172	
3	76	88.9	73	89.0	50	27	8.0	124	135	61.9	106.4	M16	5/8	2.15	<b>PGFS112B</b>	138	138	
3 1/2	89	101.6	89	103.0	50	27	7.0	134	153	69.9	120.7	M16	5/8	2.40	<b>PGFS114B</b>	34	34	
4	102	114.3	99	115.0	50	27	8.0	147	163	77.8	130.2	M16	5/8	2.85	<b>PGFS116B</b>	34	34	
5	127	140.0	120	141.0	50	28	10.5	180	184	92.1	152.4	M16	5/8	4.90	<b>PGFS118B</b>	34	34	

**6000 PSI Series**

1/2	13	17.2	10	17.5	36	16	3.7	47	57	18.2	40.5	M 8	5/16	0.29	<b>PGFS401B38</b>	420	420
1/2	13	21.3	13	21.6	36	16	4.3	47	57	18.2	40.5	M 8	5/16	0.26	<b>PGFS401B</b>	420	420
3/4	19	26.9	18	27.2	36	19	4.6	53	71	23.8	50.8	M10	3/8	0.50	<b>PGFS402B</b>	420	420
1	25	33.7	22	34.5	44	24	6.3	66	80	27.8	57.2	M12	7/16	0.76	<b>PGFS403B</b>	420	420
1 1/4	32	42.4	28	42.8	44	27	7.4	77	94	31.8	66.6	M14	1/2	1.20	<b>PGFS404B</b>	420	420
1 1/2	38	48.3	32	48.6	51	30	8.3	89	106	36.5	79.3	M16	5/8	1.65	<b>PGFS405B</b>	420	420
2	51	60.3	41	61.0	70	37	10.0	116	135	44.5	96.8	M20	3/4	2.75	<b>PGFS406B</b>	420	420
2 1/2	64	76.1	50	76.6	75	45	13.0	150	166	58.7	123.8	M24	-	6.40	<b>PGFS407B</b>	420	420
3	76	88.9	58	90.0	90	55	16.0	178	208	71.4	152.4	M30	-	8.25	<b>PGFS408B</b>	420	420

1) Pressure shown = Item deliverable

$$\frac{PN \text{ (bar)}}{10} = PN \text{ (MPa)}$$

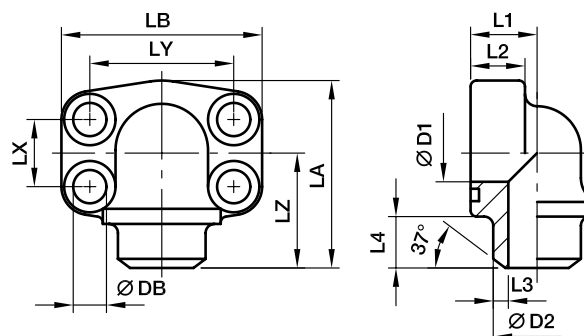
The pressures given here are the maximum allowable for the flange fittings. If the pipe or tube used has a lower pressure rating, then the welded assembly rating will be the lower one, assuming the weld is adequately strong.

\*Please add the suffixes below according to the material / surface required.

Order code suffixes				
Material	Suffix surface and material	Example 4 bolt flange with metr. threads	Example 4 bolt flange with UNC threads	Standard sealing material (no additional suffix needed)
Steel, blanc oil dipped	S	PGFS080BSM	PGFS080BSU	NBR
Stainless steel	SS	PGFS080BSSM	PGFS080BSSU	VIT

## PAFS-90B SAE 90° 4 bolt flange (butt weld)

SAE 90° Flange / Butt weld tube end  
(ISO 6162-1/-2)



### 3000 PSI Series

Nom. flange size		max.														Screws		Weight (steel) kg/piece	PN (bar) <sup>1)</sup>	
SAE (in)	ISO (DN)		D1	D2	L1	L2	L3	L4	LA	LB	LX	LY	LZ	DB	(metr.)	(unc.)	Order code*		S	SS
1/2	13	21.3	13	21.6	18	16	4.3	12	63	56	17.5	38.1	40	9.0	M 8×30	5/16×1 1/4	0.45	<b>PAFS080/90B</b>	345	345
3/4	19	26.9	19	27.2	22	18	4.1	12	74	68	22.3	47.6	41	10.5	M10×35	3/8×1 1/2	0.65	<b>PAFS100/90B</b>	345	345
1	25	33.7	25	34.5	28	19	4.7	13	77	74	26.2	52.4	50	10.5	M10×35	3/8×1 1/2	0.85	<b>PAFS102/90B</b>	345	345
1 1/4	32	42.4	31	42.8	30	22	6.0	13	91	81	30.2	58.7	57	10.5	M10×40	7/16×1 1/2	1.15	<b>PAFS104/90B</b>	276	276
1 1/2	38	48.3	38	48.6	36	25	5.3	14	105	95	35.7	69.9	66	13.5	M12×45	1/2×1 3/4	1.70	<b>PAFS106/90B</b>	207	207
2	51	60.3	50	61.0	41	25	5.5	15	110	105	42.9	77.8	66	13.5	M12×45	1/2×1 3/4	2.15	<b>PAFS108/90B</b>	207	207
2 1/2	64	76.1	60	76.6	50	25	8.0	25	127	115	50.8	88.9	77	13.5	M12×45	1/2×1 3/4	2.95	<b>PAFS110/90B</b>	172	172

### 6000 PSI Series

1/2	13	21.3	13	21.6	18	16	4.3	12	23	56	18.2	40.5	40	9.0	M 8×30	5/16×1 1/4	0.50	<b>PAFS401/90B</b>	420	420
3/4	19	26.9	18	27.2	28	20	4.6	12	27	72	23.8	50.8	50	10.5	M10×35	3/8×1 1/2	0.55	<b>PAFS402/90B</b>	420	420
1	25	33.7	22	34.5	26	24	6.3	13	34	82	27.8	57.2	57	13.5	M12×45	1/2×1 3/4	0.80	<b>PAFS403/90B</b>	420	420
1 1/4	32	42.4	28	42.8	36	25	7.4	13	39	95	31.8	66.6	66	15.0	M14×45	1/2×1 3/4	1.15	<b>PAFS404/90B</b>	420	420
1 1/2	38	48.3	32	48.6	41	26	8.3	15	44	110	36.5	79.3	65	17.0	M16×50	5/8×2	2.00	<b>PAFS405/90B</b>	420	420
2	51	60.3	41	61.0	45	35	10.0	15	58	134	44.5	96.8	75	21.0	M20×65	3/4×2 1/2	3.00	<b>PAFS406/90B</b>	420	420

<sup>1)</sup> Pressure shown = Item deliverable

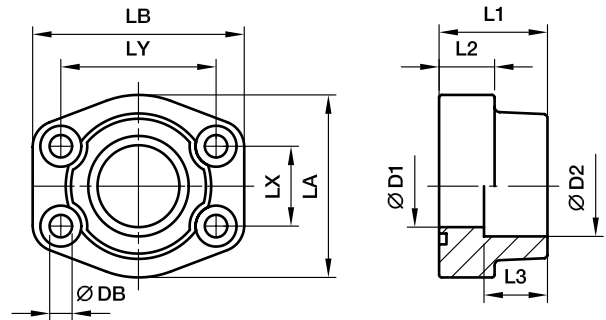
$$\frac{PN \text{ (bar)}}{10} = PN \text{ (MPa)}$$

The pressures given here are the maximum allowable for the flange fittings. If the pipe or tube used has a lower pressure rating, then the welded assembly rating will be the lower one, assuming the weld is adequately strong.

\*Please add the suffixes below according to the material / surface required.

Order code suffixes					
Material	Suffix surface and material	Example only 4 bolt flange	Example 4 bolt flange incl. metr. screws and O-ring	Example 4 bolt flange incl. UNC screws and O-ring	Standard sealing material (no additional suffix needed)
Steel, blanc oil dipped	S	PAFS080/90BS	PAFS080/90BSM	PAFS080/90BSU	NBR
Stainless steel	SS	PAFS080/90BSS	PAFS080/90BSSM	PAFS080/90BSSU	VIT

**PAFS-S SAE Straight 4 bolt flange (socket weld)**

 SAE Flange / Socket weld tube end  
 (ISO 6162-1/-2)

**3000 PSI Series**

Nom. flange size		max.											Screws		Weight (steel) kg/piece	Order code*	PN (bar) <sup>1)</sup>	
SAE (in)	ISO (DN)		D1	D2	L1	L2	L3	LA	LB	LX	LY	DB	(metr.)	(unc.)			S	SS
1/2	13	17.2	13	17.5	36	16	18	46	58	17.5	38.1	9.0	M 8×30	5/16×1 1/4	0.25	<b>PAFS080S17.5</b>	345	345
1/2	13	21.3	13	21.6	36	16	18	46	58	17.5	38.1	9.0	M 8×30	5/16×1 1/4	0.28	<b>PAFS080S21.6</b>	345	345
3/4	19	26.9	19	27.2	36	18	18	49	66	22.3	47.6	10.5	M10×35	3/8×1 1/2	0.39	<b>PAFS100S27.2</b>	345	345
1	25	33.7	25	34.1	38	18	18	53	70	26.2	52.4	10.3	M10×35	3/8×1 1/2	0.46	<b>PAFS102S34.1</b>	345	345
1 1/4	32	42.4	31	42.8	41	21	20	69	80	30.2	58.7	10.5	M10×40	7/16×1 1/2	0.66	<b>PAFS104S42.8</b>	276	276
1 1/2	38	48.3	38	48.6	44	25	22	77	94	35.7	59.9	13.5	M12×45	1/2×1 3/4	1.05	<b>PAFS106S48.6</b>	207	207
2	51	60.3	50	61.0	45	25	24	89	103	42.9	77.8	13.5	M12×45	1/2×1 3/4	1.19	<b>PAFS108S61</b>	207	207
2 1/2	64	76.1	63	76.6	50	25	28	101	115	50.8	88.9	13.5	M12×45	1/2×1 3/4	1.40	<b>PAFS110S76.6</b>	172	172
3	76	88.9	73	90.5	50	27	28	124	135	61.9	106.4	17.0	M16×50	5/8×2	2.15	<b>PAFS112S90.5</b>	138	138
3 1/2	89	101.6	89	103.0	50	27	28	137	153	69.9	120.7	17.0	M16×50	5/8×2	2.40	<b>PAFS114S103</b>	34	34
4	102	114.3	99	115.5	50	27	28	147	163	77.8	130.2	17.0	M16×50	5/8×2	2.85	<b>PAFS116S115.5</b>	34	34
5	127	140.0	120	142.0	50	28	28	180	184	92.1	152.4	17.0	M16×50	5/8×2	3.25	<b>PAFS118S142</b>	34	34

**6000 PSI Series**

1/2	13	17.2	13	17.5	36	16	18	46	58	18.2	40.5	9.0	M 8×30	5/16×1 1/4	0.26	<b>PAFS401S17.5</b>	420	420
1/2	13	21.3	13	21.6	36	16	18	46	58	18.2	40.5	9.0	M 8×30	5/16×1 1/4	0.29	<b>PAFS401S21.6</b>	420	420
3/4	19	26.9	19	27.2	36	19	20	53	71	23.8	50.8	10.3	M10×35	3/8×1 1/2	0.50	<b>PAFS402S27.2</b>	420	420
1	25	33.7	25	34.1	44	24	22	66	80	27.8	57.2	13.5	M12×45	1/2×1 3/4	0.76	<b>PAFS403S34.1</b>	420	420
1 1/4	32	42.4	31	42.8	44	27	22	77	94	31.8	66.6	15.0	M14×45	1/2×1 3/4	1.20	<b>PAFS404S42.8</b>	420	420
1 1/2	38	48.3	38	48.6	51	30	24	89	106	36.5	79.3	17.0	M16×50	5/8×2	1.65	<b>PAFS405S48.6</b>	420	420
2	51	60.3	50	61.0	70	37	25	116	135	44.5	96.8	21.0	M20×65	3/4×2 1/2	2.45	<b>PAFS406S61</b>	420	420
2 1/2	64	76.1	63	76.6	75	45	28	150	166	58.7	123.8	25.0	M24×85	–	3.05	<b>PAFS407S76.6</b>	420	420
3	76	88.9	73	90.5	90	55	30	178	208	71.4	152.4	32.0	M30×110	–	3.45	<b>PAFS408S90.5</b>	420	420

1) Pressure shown = Item deliverable

$$\frac{PN \text{ (bar)}}{10} = PN \text{ (MPa)}$$

The pressures given here are the maximum allowable for the flange fittings. If the pipe or tube used has a lower pressure rating, then the welded assembly rating will be the lower one, assuming the weld is adequately strong.

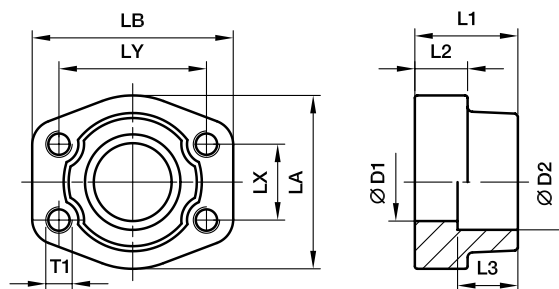
\*Please add the suffixes below according to the material / surface required.

Order code suffixes					
Material	Suffix surface and material	Example only 4 bolt flange	Example 4 bolt flange incl. metr. screws and O-ring	Example 4 bolt flange incl. UNC screws and O-ring	Standard sealing material (no additional suffix needed)
Steel, blanc oil dipped	S	PAFS080S17.5S	PAFS080S17.5SM	PAFS080S17.5SU	NBR
Stainless steel	SS	PAFS080S17.5SS	PAFS080S17.5SSM	PAFS080S17.5SSU	VIT

# SAE 4 Bolt flanges

## PGFS-S SAE Straight counter 4 bolt flange (socket weld)

SAE Counter flange / Socket weld tube end  
(ISO 6162-1/-2)



### 3000 PSI Series

Nom. flange size		max.	D1	D2	L1	L2	L3	LA	LB	LX	LY	DB	T1		Weight (steel) kg/piece	Order code*	PN (bar) <sup>1)</sup>	
SAE (in)	ISO (DN)												(metr.)	(unc.)			S	SS
1/2	13	17.2	13	17.5	36	18	16	46	58	17.5	38.1	9.0	M 8	5/16	0.25	<b>PGFS080S17.5</b>	345	345
1/2	13	21.3	13	21.6	36	18	16	46	58	17.5	38.1	9.0	M 8	5/16	0.28	<b>PGFS080S21.6</b>	345	345
3/4	19	26.9	19	27.2	36	18	18	49	66	22.3	47.6	10.5	M10	3/8	0.39	<b>PGFS100S27.2</b>	345	345
1	25	33.7	25	34.1	38	18	18	53	70	26.2	52.4	10.5	M10	3/8	0.46	<b>PGFS102S34.1</b>	345	345
1 1/4	32	42.4	31	42.8	41	20	21	69	80	30.2	58.7	10.5	M10	7/16	0.66	<b>PGFS104S42.8</b>	276	276
1 1/2	38	48.3	38	48.6	44	22	25	77	94	35.7	69.9	13.5	M12	1/2	1.05	<b>PGFS106S48.6</b>	207	207
2	51	60.3	50	61.0	45	24	25	89	103	42.9	77.8	13.5	M12	1/2	1.19	<b>PGFS108S61</b>	207	207
2 1/2	64	76.1	63	76.6	50	28	25	101	115	50.8	88.9	13.5	M12	1/2	1.40	<b>PGFS110S76.6</b>	172	172
3	76	88.9	73	90.5	50	28	27	124	135	61.9	106.4	17.0	M16	5/8	2.15	<b>PGFS112S90.5</b>	138	138
3 1/2	89	101.6	89	103.0	50	28	27	137	153	69.9	120.7	17.0	M16	5/8	2.40	<b>PGFS114S103</b>	34	34
4	102	114.3	99	115.5	50	28	27	147	163	77.8	130.2	17.0	M16	5/8	2.85	<b>PGFS116S115.5</b>	34	34
5	127	140.0	120	142.0	50	28	28	180	184	92.1	152.4	17.0	M16	5/8	3.25	<b>PGFS118S142</b>	34	34

### 6000 PSI Series

1/2	13	17.2	13	17.5	36	18	16	46	58	18.2	40.5	9.0	M 8	5/16	0.26	<b>PGFS401S17.5</b>	420	420
1/2	13	21.3	13	21.6	36	18	16	46	58	18.2	40.5	9.0	M 8	5/16	0.29	<b>PGFS401S21.6</b>	420	420
3/4	19	26.9	19	27.2	36	20	19	53	71	23.8	50.8	10.5	M10	3/8	0.50	<b>PGFS402S27.2</b>	420	420
1	25	33.7	25	34.1	44	22	24	66	80	27.8	57.2	13.5	M12	7/16	0.76	<b>PGFS403S34.1</b>	420	420
1 1/4	32	42.4	31	42.8	44	22	27	77	94	31.8	66.6	15.0	M14	1/2	1.20	<b>PGFS404S42.8</b>	420	420
1 1/2	38	48.3	38	48.6	51	24	30	89	106	36.5	79.3	17.0	M16	5/8	1.65	<b>PGFS405S48.6</b>	420	420
2	51	60.3	50	61.0	70	25	37	116	135	44.5	96.8	21.0	M20	3/4	2.45	<b>PGFS406S61</b>	420	420
2 1/2	64	76.1	63	76.6	75	28	45	150	166	58.7	123.8	25.0	M24	-	3.05	<b>PGFS407S76.6</b>	420	420
3	76	88.9	73	90.5	90	30	55	178	208	71.4	152.4	32.0	M30	-	3.45	<b>PGFS408S90.5</b>	420	420

1) Pressure shown = Item deliverable

$$\frac{\text{PN (bar)}}{10} = \text{PN (MPa)}$$

The pressures given here are the maximum allowable for the flange fittings. If the pipe or tube used has a lower pressure rating, then the welded assembly rating will be the lower one, assuming the weld is adequately strong.

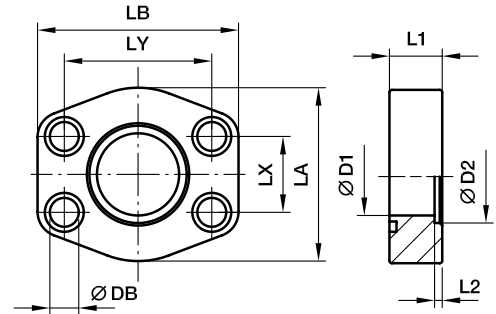
\*Please add the suffixes below according to the material / surface required.

Order code suffixes				
Material	Suffix surface and material	Example 4 bolt flange with metr. threads	Example 4 bolt flange with UNC threads	Standard sealing material (no additional suffix needed)
Steel, blanc oil dipped	S	PGFS080S17.5SM	PGFS080S17.5SU	NBR
Stainless steel	SS	PGFS080S17.5SSM	PGFS080S17.5SSU	VIT

**PAFSF-S SAE Straight 4 bolt flange flat (socket weld)**

 SAE Flange / Socket weld tube end  
 (ISO 6162-1/-2)

only for low pressure applications


**3000 PSI Series**

Nom. flange size		max.	D1	D2	L1	L2	LA	LB	LX	LY	DB	Screws		Weight (steel) kg/piece	Order code*	PN (bar) <sup>1)</sup>	
SAE (in)	ISO (DN)											(metr.)	(unc.)			S	SS
1/2	13	17.2	13	17.5	16	3	46	58	17.5	38.1	9.0	M 8×30	5/16×1 1/4	0.12	PAFSF080S17.5	40	40
1/2	13	21.3	13	21.6	16	3	46	58	17.5	38.1	9.0	M 8×30	5/16×1 1/4	0.12	PAFSF080S21.6	40	40
3/4	19	21.3	13	21.6	18	4	49	66	22.3	47.6	10.5	M10×35	3/8×1 1/2	0.20	PAFSF100S21.6	40	40
3/4	19	26.9	19	27.2	18	4	49	66	22.3	47.6	10.5	M10×35	3/8×1 1/2	0.20	PAFSF100S27.2	40	40
1	25	26.9	19	27.2	19	4	53	71	26.2	52.4	10.5	M10×35	3/8×1 1/2	0.25	PAFSF102S27.2	40	40
1	25	33.7	25	34.5	19	4	53	71	26.2	52.4	10.5	M10×35	3/8×1 1/2	0.25	PAFSF102S34.5	40	40
1 1/4	32	33.7	25	34.5	21	4	69	80	30.2	58.7	10.5	M10×40	7/16×1 1/2	0.31	PAFSF104S34.5	40	40
1 1/4	32	42.4	31	42.8	21	4	69	80	30.2	58.7	10.5	M10×40	7/16×1 1/2	0.31	PAFSF104S42.8	40	40
1 1/2	38	42.4	31	42.8	24	4	77	95	35.7	69.9	13.5	M12×45	1/2×1 3/4	0.50	PAFSF106S42.8	40	40
1 1/2	38	48.3	38	48.6	24	4	77	95	35.7	69.9	13.5	M12×45	1/2×1 3/4	0.50	PAFSF106S48.6	40	40
2	51	48.3	38	48.6	24	4	89	103	42.9	77.8	13.5	M12×45	1/2×1 3/4	0.59	PAFSF108S48.6	40	40
2	51	60.3	50	61.0	24	4	89	103	42.9	77.8	13.5	M12×45	1/2×1 3/4	0.59	PAFSF108S61.0	40	40
2 1/2	64	60.3	50	61.0	25	5	101	116	50.8	88.9	13.5	M12×45	1/2×1 3/4	0.72	PAFSF110S61.0	40	40
2 1/2	64	76.1	63	76.6	25	5	101	116	50.8	88.9	13.5	M12×45	1/2×1 3/4	0.72	PAFSF110S76.6	40	40
3	76	76.1	63	76.6	25	5	124	136	61.9	106.4	17.0	M16×50	5/8×2	1.25	PAFSF112S76.6	30	30
3	76	88.9	73	90.5	25	5	124	136	61.9	106.4	17.0	M16×50	5/8×2	1.25	PAFSF112S90.5	30	30
3 1/2	89	88.9	73	90.5	25	5	136	152	69.9	120.7	17.0	M16×50	5/8×2	1.50	PAFSF114S90.5	30	30
3 1/2	89	101.6	89	103.0	25	5	136	152	69.9	120.7	17.0	M16×50	5/8×2	1.50	PAFSF114S103	30	30
4	102	101.6	89	103.0	25	6	146	162	77.8	130.2	17.0	M16×50	5/8×2	2.15	PAFSF116S103	30	30
4	102	114.3	99	115.5	25	6	146	162	77.8	130.2	17.0	M16×50	5/8×2	2.15	PAFSF116S115.5	30	30
5	127	114.3	99	115.5	25	6	180	184	92.1	152.4	17.0	M16×50	5/8×2	3.00	PAFSF118S115.5	30	30
5	127	140.0	120	142.5	25	6	180	184	92.1	135.0	17.0	M16×50	5/8×2	3.00	PAFSF118S142.5	30	30

**6000 PSI Series**

1/2	13	17.2	13	17.5	16	4	46	58	18.2	40.5	9.0	M 8×30	5/16×1 1/4	0.12	PAFSF401S17.5	40	40
1/2	13	21.3	13	21.6	16	4	46	58	18.2	40.5	9.0	M 8×30	5/16×1 1/4	0.12	PAFSF401S21.6	40	40
3/4	19	21.3	13	21.6	19	4	53	71	23.8	50.8	10.5	M10×35	3/8×1 1/2	0.20	PAFSF402S21.6	40	40
3/4	19	26.9	19	27.2	19	4	53	71	23.8	50.8	10.5	M10×35	3/8×1 1/2	0.20	PAFSF402S27.2	40	40
1	25	26.9	19	27.2	24	4	66	80	27.8	57.2	13.5	M12×45	1/2×1 3/4	0.25	PAFSF403S27.2	40	40
1	25	33.7	25	34.5	24	4	66	80	27.8	57.2	13.5	M12×45	1/2×1 3/4	0.25	PAFSF403S34.5	40	40
1 1/4	32	33.7	25	34.5	27	4	77	94	31.8	66.6	15.0	M14×45	1/2×1 3/4	0.31	PAFSF404S34.5	40	40
1 1/4	32	42.4	31	42.8	27	4	77	94	31.8	66.6	15.0	M14×45	1/2×1 3/4	0.31	PAFSF404S42.8	40	40
1 1/2	38	42.4	31	42.8	30	4	89	103	36.5	79.3	17.0	M16×50	5/8×2	0.50	PAFSF405S42.8	40	40
1 1/2	38	48.3	38	48.6	30	4	89	103	36.5	79.3	17.0	M16×50	5/8×2	0.50	PAFSF405S48.6	40	40
2	51	48.3	38	48.6	35	4	123	135	44.5	96.8	21.0	M20×65	3/4×2 1/2	0.59	PAFSF406S48.6	40	40
2	51	60.3	50	61.0	35	4	123	135	44.5	96.8	21.0	M20×65	3/4×2 1/2	0.59	PAFSF406S61.0	40	40

The pressures given here are the maximum allowable for the flange fittings. If the pipe or tube used has a lower pressure rating, then the welded assembly rating will be the lower one, assuming the weld is adequately strong.

\*Please add the suffixes below according to the material / surface required.

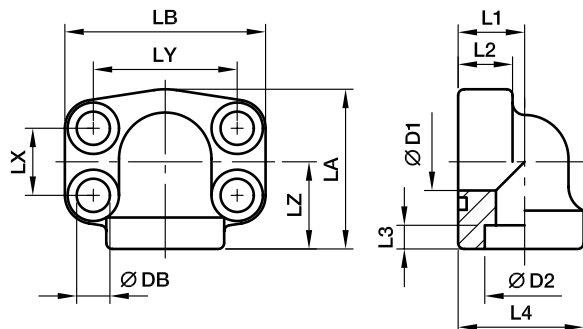
Order code suffixes					
Material	Suffix surface and material	Example only 4 bolt flange	Example 4 bolt flange incl. metr. screws and O-ring	Example 4 bolt flange incl. UNC screws and O-ring	Standard sealing material (no additional suffix needed)
Steel, blanc oil dipped	S	PAFSF080S17.5S	PAFSF080S17.5SM	PAFSF080S17.5SU	NBR
Stainless steel	SS	PAFSF080S17.5SS	PAFSF080S17.5SSM	PAFSF080S17.5SSU	VIT

<sup>1)</sup> Pressure shown = Item deliverable

$$\frac{PN \text{ (bar)}}{10} = PN \text{ (MPa)}$$

## PAFS-90S SAE 90° 4 bolt flange (socket weld)

SAE 90° Flange / Socket weld tube end  
(ISO 6162-1/-2)



### 3000 PSI Series

Nom. flange size		max.	D1	D2	L1	L2	L3	L4	LA	LB	LX	LY	LZ	DB	Screws		Weight (steel) kg/piece	Order code*	PN (bar) <sup>1)</sup>	
SAE (in)	ISO (DN)														(metr.)	(unc.)			S	SS
1/2	13	21.3	13	21.6	18	17	5	34.0	51	57	17.5	38.1	28	9.0	M 8×30	5/16×1 1/4	0.35	PAFS080/90S21.6	345	345
3/4	19	26.9	19	27.2	22	18	5	38.5	50	68	22.2	47.6	25	10.5	M10×35	3/8×1 1/2	0.55	PAFS100/90S27.2	345	345
1	25	33.7	25	34.1	28	19	6	44.5	55	72	26.2	52.4	28	10.5	M10×35	3/8×1 1/2	0.80	PAFS102/90S34.1	345	345
1 1/4	32	42.4	31	42.8	30	22	7	53.5	68	82	30.2	58.7	34	10.5	M10×40	7/16×1 1/2	1.30	PAFS104/90S42.8	276	276
1 1/2	38	48.3	38	48.6	36	25	8	62.5	82	95	35.7	69.9	43	13.5	M12×45	1/2×1 3/4	1.60	PAFS106/90S48.6	207	207
2	51	60.3	50	61.0	41	25	10	77.0	94	105	42.9	77.8	50	13.5	M12×45	1/2×1 3/4	2.00	PAFS108/90S61	207	207
2 1/2	64	76.1	60	76.6	50	25	28	85.0	127	115	50.8	88.9	77	13.5	M12×45	1/2×1 3/4	2.60	PAFS110/90S76.6	172	172

### 6000 PSI Series

1/2	13	21.3	13	21.6	18	17	5	34.0	51	57	18.2	40.5	28	9.0	M 8×30	5/16×1 1/4	0.35	PAFS401/90S21.6	420	420
3/4	19	26.9	19	27.2	28	19	6	44.5	55	72	23.8	50.8	28	10.5	M10×35	3/8×1 1/2	0.80	PAFS402/90S27.2	420	420
1	25	33.7	25	34.1	30	24	7	53.5	68	82	27.8	57.2	34	13.5	M12×45	1/2×1 3/4	1.30	PAFS403/90S34.1	420	420
1 1/4	32	42.4	31	42.8	36	25	8	62.5	82	95	31.8	66.6	43	15.0	M14×45	1/2×1 3/4	1.60	PAFS404/90S42.8	420	420
1 1/2	38	48.3	38	48.6	41	26	10	77.0	94	110	36.5	79.3	50	17.0	M16×50	5/8×2	2.00	PAFS405/90S48.6	420	420
2	51	60.3	50	61.0	45	35	12	89.0	123	134	44.5	96.8	65	21.0	M20×65	3/4×2 1/2	2.50	PAFS406/90S61	420	420

<sup>1)</sup> Pressure shown = Item deliverable

$$\frac{PN \text{ (bar)}}{10} = PN \text{ (MPa)}$$

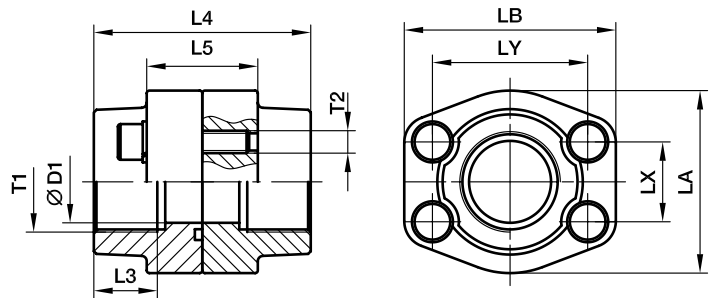
The pressures given here are the maximum allowable for the flange fittings. If the pipe or tube used has a lower pressure rating, then the welded assembly rating will be the lower one, assuming the weld is adequately strong.

\*Please add the suffixes below according to the material / surface required.

Order code suffixes					
Material	Suffix surface and material	Example only 4 bolt flange	Example 4 bolt flange incl. metr. screws and O-ring	Example 4 bolt flange incl. UNC screws and O-ring	Standard sealing material (no additional suffix needed)
Steel, blanc oil dipped	S	PAFS080/90S21.6S	PAFS080/90S21.6SM	PAFS080/90S21.6SU	NBR
Stainless steel	SS	PAFS080/90S21.6SS	PAFS080/90S21.6SSM	PAFS080/90S21.6SSU	VIT

**PDFS-G SAE Straight 4 bolt flange connection**

SAE Flange / Female BSPP thread  
(ISO 6162-1/-2) (ISO 1179-1)



**3000 PSI Series**

Nom. flange size		T1	D1	L3	L4	L5	LA	LB	LX	LY	T2		Weight (steel) kg/piece	Order code*	PN (bar) <sup>1)</sup>	
SAE (in)	ISO (DN)										(metr.)	(unc.)			S	SS
1/2	13	G3/8	13	19	72	32	47	57	17.5	38.1	M 8	5/16	0.50	PDFS080G38	345	345
1/2	13	G1/2	13	19	72	32	47	57	17.5	38.1	M 8	5/16	0.56	PDFS080G	345	345
3/4	19	G3/4	19	19	72	36	49	66	22.3	47.6	M10	3/8	0.78	PDFS100G	345	345
1	25	G1	25	19	76	36	53	71	26.2	52.4	M10	3/8	0.92	PDFS102G	345	345
1 1/4	32	G1 1/4	31	22	82	42	69	80	30.2	58.7	M10	7/16	1.32	PDFS104G	276	276
1 1/2	38	G1 1/2	38	24	88	48	77	94	35.7	69.9	M12	1/2	2.10	PDFS106G	207	207
2	51	G2	50	26	90	48	89	103	42.9	77.8	M12	1/2	2.38	PDFS108G	207	207
2 1/2	64	G2 1/2	63	30	100	48	101	115	50.8	88.9	M12	1/2	2.80	PDFS110G	172	172
3	76	G3	73	34	100	53	124	135	61.9	106.4	M16	5/8	4.30	PDFS112G	138	138
3 1/2	89	G3 1/2	89	27	100	54	136	152	69.9	120.7	M16	5/8	4.80	PDFS114G	34	34
4	102	G4	99	30	100	54	146	162	77.8	130.2	M16	5/8	5.70	PDFS116G	34	34
5	127	G5	120	30	100	54	180	184	92.1	152.4	M16	5/8	6.60	PDFS118G	34	34

**6000 PSI Series**

1/2	13	G3/8	13	19	72	32	47	57	18.2	40.5	M 8	5/16	0.52	PDFS401G38	420	420
1/2	13	G1/2	13	19	72	32	47	57	18.2	40.5	M 8	5/16	0.58	PDFS401G	420	420
3/4	19	G3/4	19	22	72	38	53	71	23.8	50.8	M10	3/8	1.00	PDFS402G	420	420
1	25	G1	25	24	88	48	69	80	27.8	57.2	M12	7/16	1.52	PDFS403G	420	420
1 1/4	32	G1 1/4	31	25	88	54	77	94	31.8	66.6	M14	1/2	2.40	PDFS404G	420	420
1 1/2	38	G1 1/2	38	28	102	60	89	106	36.5	79.3	M16	5/8	3.30	PDFS405G	420	420
2	51	G2	50	33	140	74	116	135	44.5	96.8	M20	3/4	4.90	PDFS406G	420	420
2 1/2	64	G2 1/2	63	35	150	90	150	166	58.7	123.8	M24	-	6.50	PDFS407G	420	420
3	76	G3	73	40	180	110	178	208	71.4	152.4	M30	-	8.00	PDFS408G	420	420

<sup>1)</sup> Pressure shown = Item deliverable

$$\frac{PN \text{ (bar)}}{10} = PN \text{ (MPa)}$$

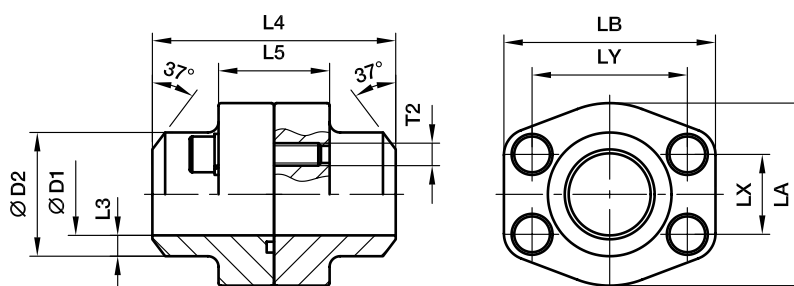
\*Please add the suffixes below according to the material / surface required.

Order code suffixes				
Material	Suffix surface and material	Example 4 bolt flange coupling incl. metr. screws and O-ring	Example 4 bolt flange coupling incl. UNC screws and O-ring	Standard sealing material (no additional suffix needed)
Steel, blanc oil dipped	S	PDFS080GS	PDFS080GSU	NBR
Stainless steel	SS	PDFS080GSS	PDFS080GSSU	VIT



## PDFS-B SAE Straight 4 bolt flange connection (butt weld)

SAE Flange / Butt weld tube end  
(ISO 6162-1/-2)



### 3000 PSI Series

Nom. flange size		max.											T2		Weight (steel) kg/piece	Order code*	PN (bar) <sup>1)</sup>	
SAE (in)	ISO (DN)		D1	D2	L3	L4	L5	LA	LB	LX	LY	(metr.)	(unc.)	S			SS	
1/2	13	21.3	13	21.6	4.3	72	32	47	57	17.5	38.1	M 8	5/16	0.50	<b>PDFS080B</b>	345	345	
3/4	19	26.9	19	27.2	4.1	72	36	49	66	22.3	47.6	M10	3/8	0.56	<b>PDFS100B</b>	345	345	
1	25	33.7	25	34.5	4.7	76	36	53	71	26.2	52.4	M10	3/8	0.78	<b>PDFS102B</b>	345	345	
1 1/4	32	42.4	31	42.8	6.0	82	42	69	80	30.2	58.7	M10	7/16	0.92	<b>PDFS104B</b>	345	345	
1 1/2	38	48.3	38	48.6	5.3	88	48	77	94	35.7	69.9	M12	1/2	1.32	<b>PDFS106B</b>	276	276	
2	51	60.3	50	61.0	5.5	90	48	89	103	42.9	77.8	M12	1/2	2.10	<b>PDFS108B</b>	207	207	
2 1/2	64	76.1	63	76.6	6.8	100	48	101	115	50.8	88.9	M12	1/2	2.38	<b>PDFS110B</b>	207	207	
3	76	88.9	73	89.0	8.0	100	53	124	135	61.9	106.4	M16	5/8	2.80	<b>PDFS112B</b>	172	172	
3 1/2	89	101.6	89	103.0	7.0	100	54	137	153	69.9	120.7	M16	5/8	4.30	<b>PDFS114B</b>	138	138	
4	102	114.3	99	115.0	8.0	100	54	147	163	77.8	130.2	M16	5/8	4.80	<b>PDFS116B</b>	34	34	
5	127	140.0	120	141.0	10.5	100	54	180	184	92.1	152.4	M16	5/8	5.70	<b>PDFS118B</b>	34	34	

### 6000 PSI Series

1/2	13	17.2	10	17.5	3.7	72	32	47	57	18.2	40.5	M 8	5/16	0.52	<b>PDFS401B38</b>	420	420
1/2	13	21.3	13	21.6	4.3	72	32	47	57	18.2	40.5	M 8	5/16	0.58	<b>PDFS401B</b>	420	420
3/4	19	26.9	18	27.2	4.6	72	38	53	71	23.8	50.8	M10	3/8	1.00	<b>PDFS402B</b>	420	420
1	25	33.7	22	34.5	6.3	88	48	66	80	27.8	57.2	M12	7/16	1.52	<b>PDFS403B</b>	420	420
1 1/4	32	42.4	28	42.8	7.4	88	54	77	94	31.8	66.5	M14	1/2	2.40	<b>PDFS404B</b>	420	420
1 1/2	38	48.3	32	48.6	8.3	102	60	89	106	36.5	79.3	M16	5/8	3.30	<b>PDFS405B</b>	420	420
2	51	60.3	41	61.0	10.0	140	74	116	135	44.5	96.8	M20	3/4	4.90	<b>PDFS406B</b>	420	420
2 1/2	64	76.1	50	76.6	13.0	150	90	150	166	58.7	123.8	M24	-	6.50	<b>PDFS407B</b>	420	420
3	76	88.9	58	90.0	16.0	180	110	178	208	71.4	152.4	M30	-	8.00	<b>PDFS408B</b>	420	420

1) Pressure shown = Item deliverable

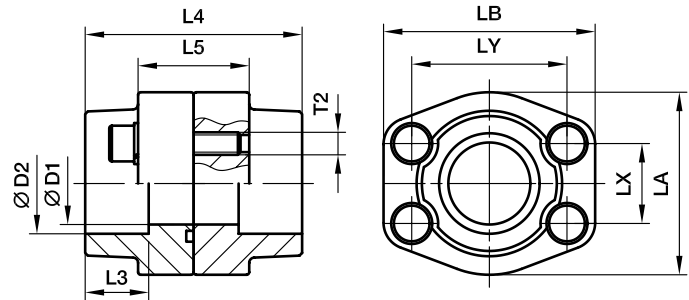
$$\frac{\text{PN (bar)}}{10} = \text{PN (MPa)}$$

The pressures given here are the maximum allowable for the flange fittings. If the pipe or tube used has a lower pressure rating, then the welded assembly rating will be the lower one, assuming the weld is adequately strong.

\*Please add the suffixes below according to the material / surface required.

Order code suffixes				
Material	Suffix surface and material	Example 4 bolt flange coupling incl. metr. screws and O-ring	Example 4 bolt flange coupling incl. UNC screws and O-ring	Standard sealing material (no additional suffix needed)
Steel, blanc oil dipped	S	PDFS080BS	PDFS080BSU	NBR
Stainless steel	SS	PDFS080BSS	PDFS080BSSU	VIT

**PDFS-S SAE Straight 4 bolt flange connection (socket weld)**

 SAE Flange / Socket weld tube end  
 (ISO 6162-1/-2)

**3000 PSI Series**

Nom. flange size		max.										T2		Weight (steel) kg/piece	Order code*	PN (bar) <sup>1)</sup>	
SAE (in)	ISO (DN)		D1	D2	L3	L4	L5	LA	LB	LX	LY	(metr.)	(unc.)			S	SS
1/2	13	17.2	13	17.5	18	72	36	47	57	17.5	38.1	M 8	5/16	0.50	PDFS080S17.5	345	345
1/2	13	21.3	13	21.6	18	72	36	47	57	17.5	38.1	M 8	5/16	0.50	PDFS080S21.6	345	345
3/4	19	26.9	19	27.2	18	72	36	49	66	22.3	47.6	M10	3/8	0.56	PDFS100S27.2	345	345
1	25	33.7	25	34.1	18	76	36	53	71	26.2	52.4	M10	3/8	0.78	PDFS102S34.1	345	345
1 1/4	32	42.4	31	42.8	20	82	42	69	80	30.2	58.7	M10	7/16	0.92	PDFS104S42.8	345	345
1 1/2	38	48.3	38	48.6	22	88	48	77	94	35.7	69.9	M12	1/2	1.32	PDFS106S48.6	276	276
2	51	60.3	50	61.0	24	90	48	89	103	42.9	77.8	M12	1/2	2.10	PDFS108S61	207	207
2 1/2	64	76.1	63	76.6	28	100	48	101	116	50.8	88.9	M12	1/2	2.38	PDFS110S76.6	207	207
3	76	88.9	73	90.5	28	100	53	124	135	61.9	106.4	M16	5/8	2.80	PDFS112S90.5	172	172
3 1/2	89	101.6	89	103.0	28	100	54	137	153	69.9	120.7	M16	5/8	4.30	PDFS114S103	138	138
4	102	114.3	99	115.5	28	100	54	147	163	77.8	130.2	M16	5/8	4.80	PDFS116S115.5	34	34
5	127	140.0	120	142.0	28	100	54	180	184	92.1	152.4	M16	5/8	5.70	PDFS118S142	34	34

**6000 PSI Series**

1/2	13	17.2	13	17.5	18	72	32	47	57	18.2	40.5	M 8	5/16	0.52	PDFS401S17.5	420	420
1/2	13	21.3	13	21.6	18	72	32	47	57	18.2	40.5	M 8	5/16	0.58	PDFS401S21.6	420	420
3/4	19	26.9	19	27.2	20	72	38	53	71	23.8	50.8	M10	3/8	1.00	PDFS402S27.2	420	420
1	25	33.7	25	34.1	22	88	48	66	80	27.8	57.2	M12	7/16	1.52	PDFS403S34.1	420	420
1 1/4	32	42.4	31	42.8	22	88	54	77	94	31.8	66.6	M14	1/2	2.40	PDFS404S42.8	420	420
1 1/2	38	48.3	38	48.6	24	102	60	89	106	36.5	79.3	M16	5/8	3.30	PDFS405S48.6	420	420
2	51	60.3	50	61.0	25	140	74	116	135	44.5	96.8	M20	3/4	4.90	PDFS406S61	420	420
2 1/2	64	76.1	63	76.6	28	150	90	150	166	58.7	123.8	M24	-	6.50	PDFS407S76.6	420	420
3	76	88.9	73	90.5	30	180	110	178	208	71.4	152.4	M30	-	8.00	PDFS408S90.5	420	420

1) Pressure shown = Item deliverable

$$\frac{PN \text{ (bar)}}{10} = PN \text{ (MPa)}$$

The pressures given here are the maximum allowable for the flange fittings. If the pipe or tube used has a lower pressure rating, then the welded assembly rating will be the lower one, assuming the weld is adequately strong.

\*Please add the suffixes below according to the material / surface required.

Order code suffixes				
Material	Suffix surface and material	Example 4 bolt flange coupling incl. metr. screws and O-ring	Example 4 bolt flange coupling incl. UNC screws and O-ring	Standard sealing material (no additional suffix needed)
Steel, blanc oil dipped	S	PDFS080S17.5S	PDFS080S17.5SU	NBR
Stainless steel	SS	PDFS080S17.5SS	PDFS080S17.5SSU	VIT