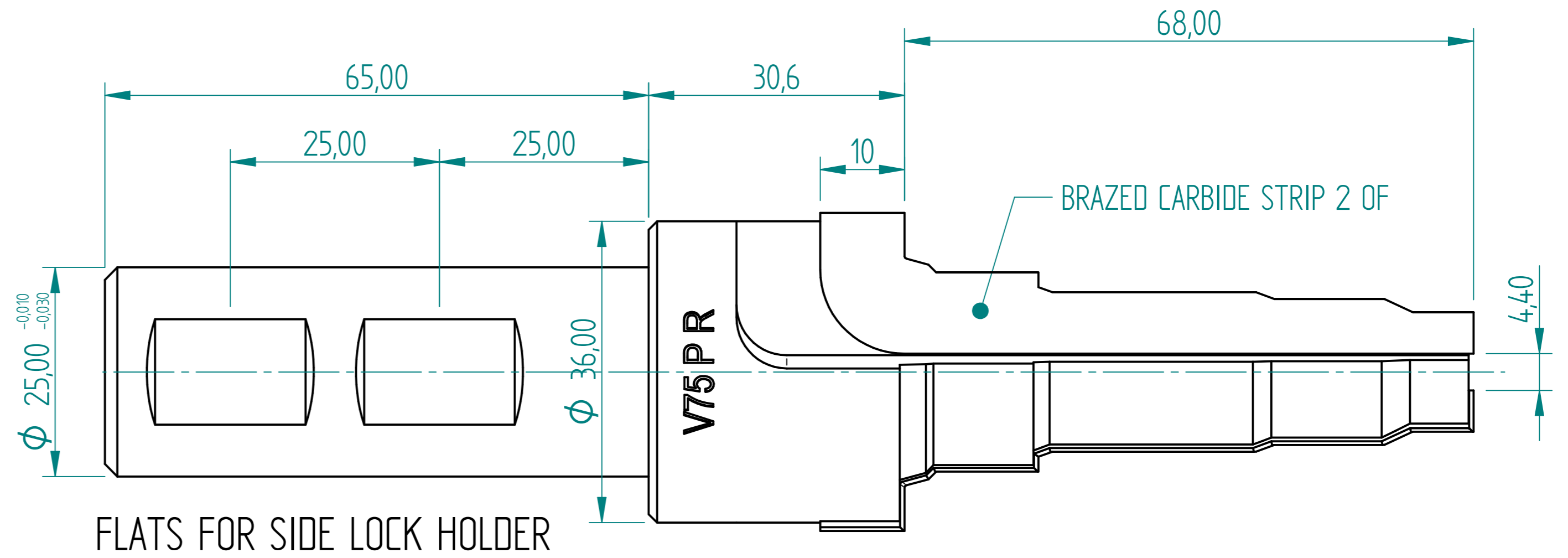
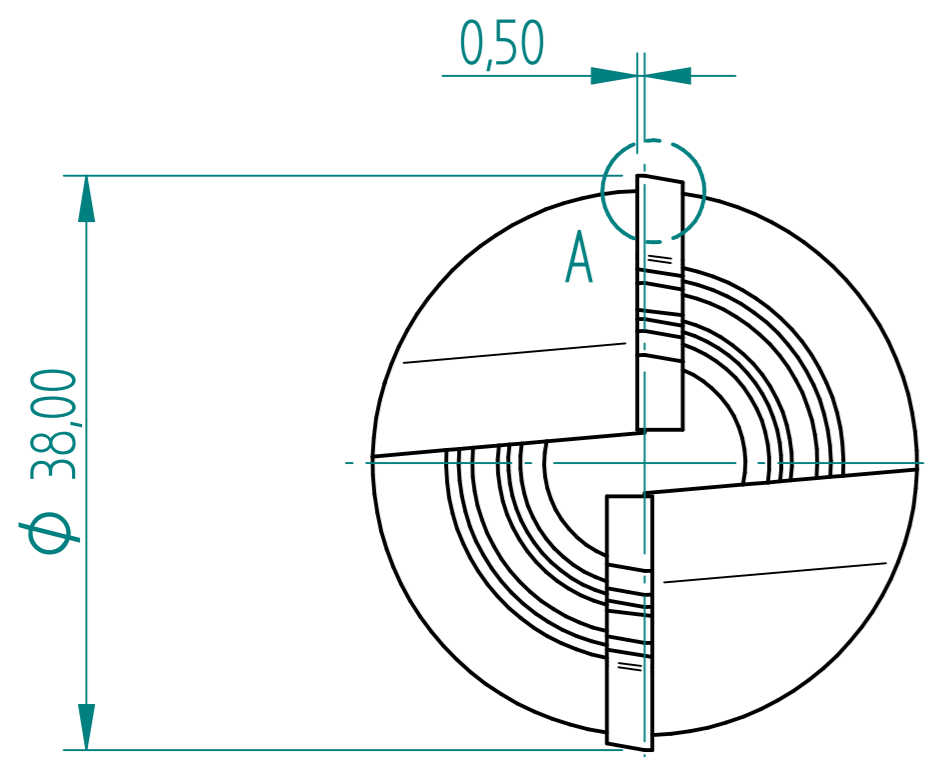
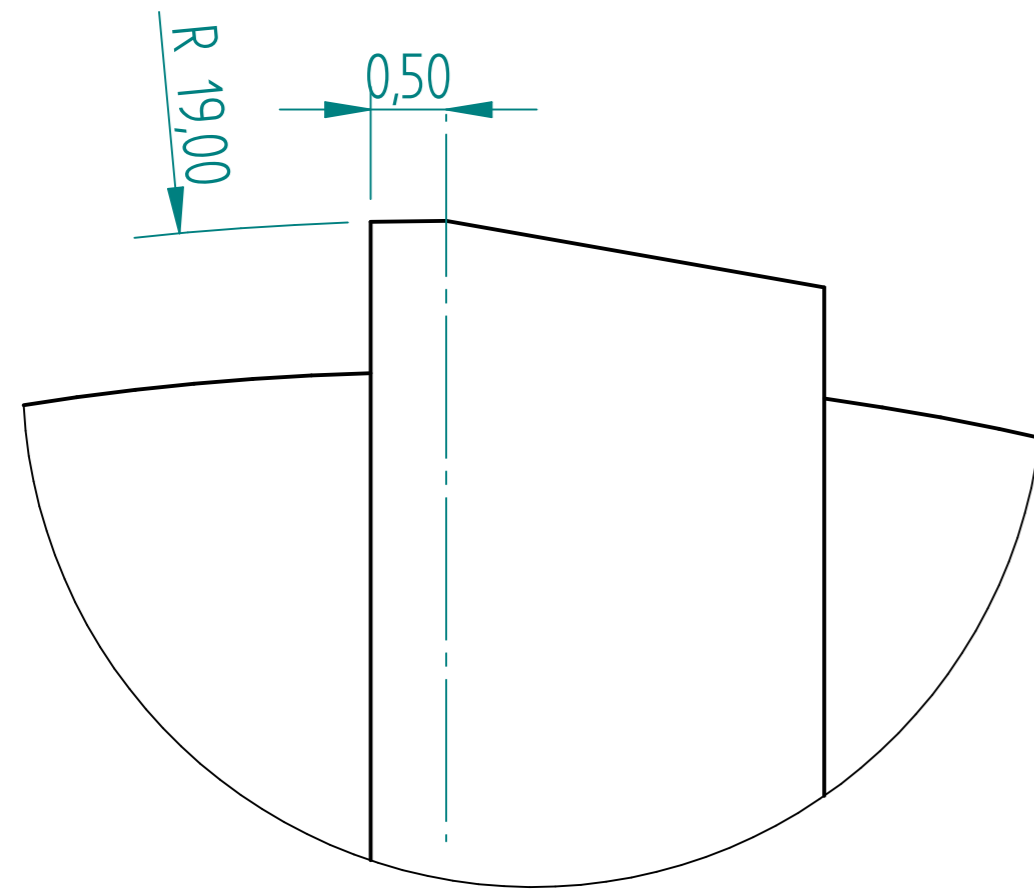


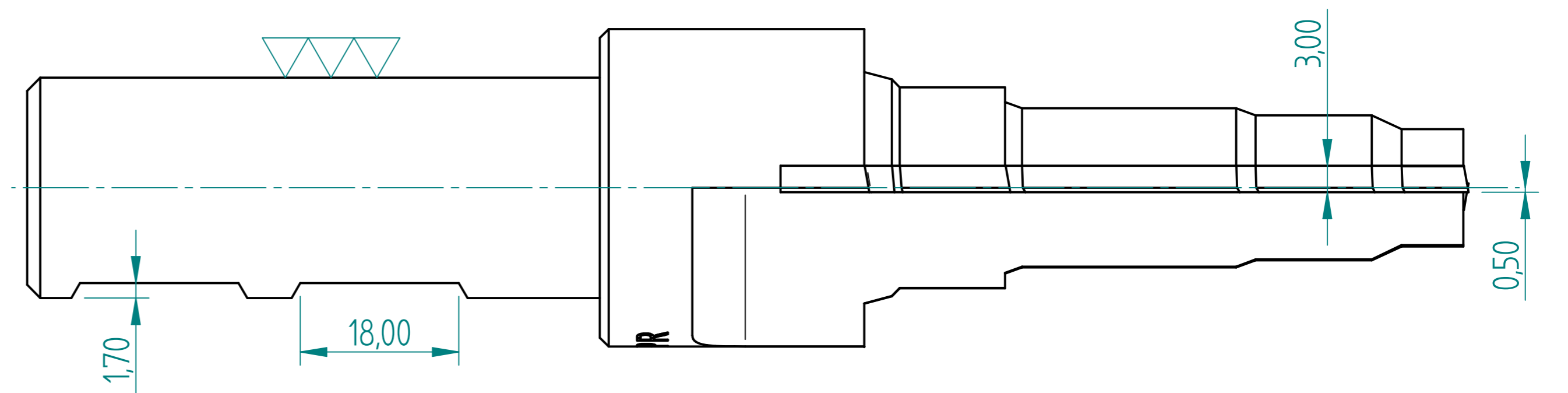
REVISION HISTORY			
REV	DESCRIPTION	DATE	APPROVED



0.5 ABOVE CENTRE LINE
BACK RAKE FROM CENTRE LINE



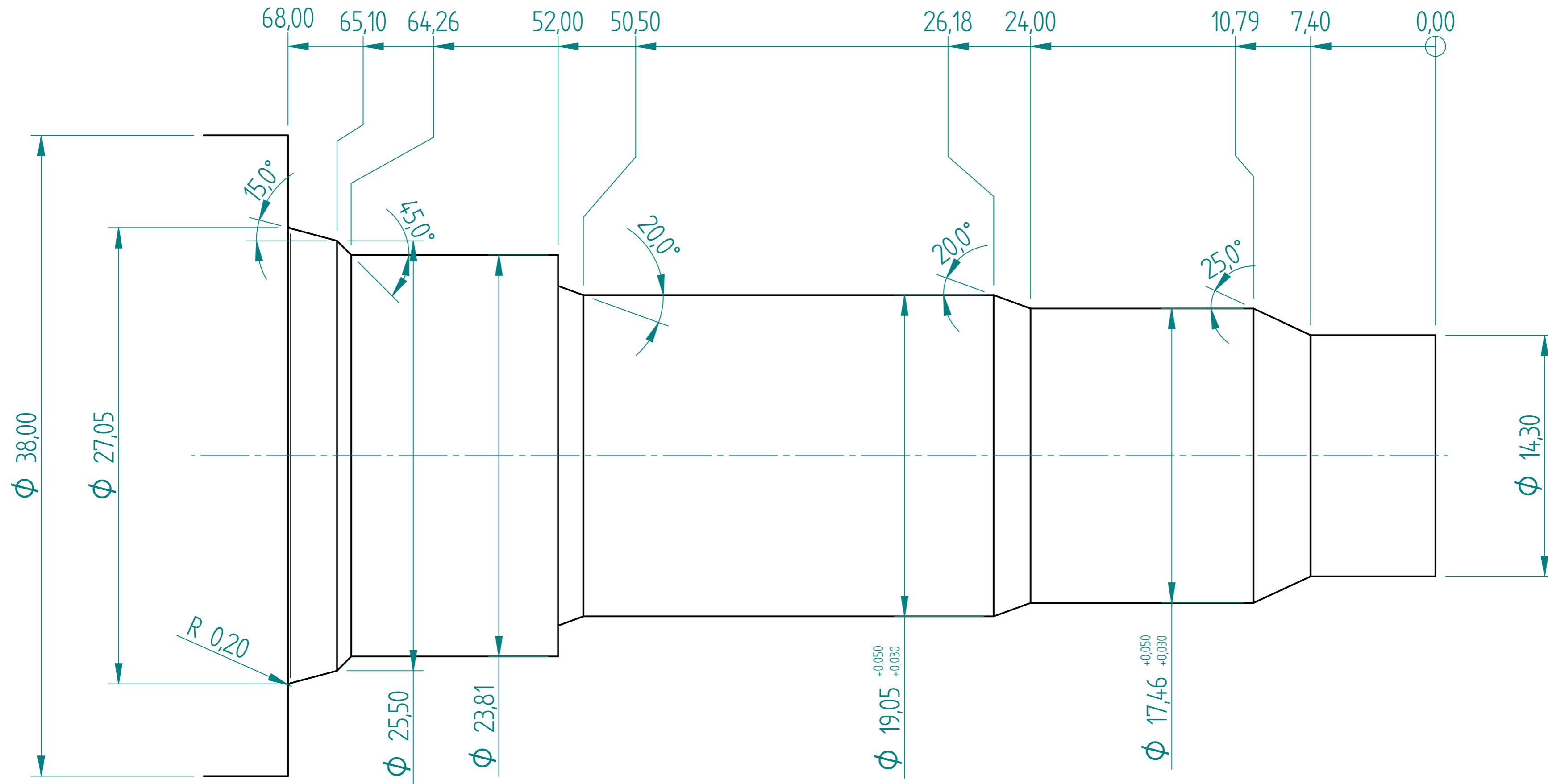
DETAIL A



V75 PR FACILITY BY 68 DEEP IN CAST IRON.
2 FLUTES BRAZED CARBIDE STRIP.
NOT CENTRE CUTTING.

DRAWN	NAME	DATE	PREMAC	
APPROVED	Dan	10/16/19		
MATERIAL			TITLE	
TREATMENT			V75 PR Bar	
UNLESS OTHERWISE SPECIFIED DIMENSIONS ARE IN MILLIMETERS			SIZE	DWG NO
ANGLES ±0.1°			A4	REV
1st ANGLE 2 PL ±0.02 3 PL ±0.005			FILE NAME: V75 PR Bar.dft	
SCALE:		WEIGHT:	SHEET 1 OF 3	

REVISION HISTORY			
REV	DESCRIPTION	DATE	APPROVED



V75 PR CAVITY SIZES
PORT 1-16 UN 2B

	NAME	DATE	PREMAC		
DRAWN	Dan	10/16/19			
APPROVED			TITLE V75 PR Bar		
MATERIAL					
TREATMENT			SIZE A4	DWG NO	REV
UNLESS OTHERWISE SPECIFIED DIMENSIONS ARE IN MILLIMETERS			FILE NAME: V75 PR Bar.dft		
1st ANGLE 2 PL ±0.02 3 PL ±0.005			SCALE:	WEIGHT:	SHEET 2 OF 3

REVISION HISTORY			
REV	DESCRIPTION	DATE	APPROVED



	NAME	DATE	PREMAC	
DRAWN	Dan	10/16/19		
APPROVED				
MATERIAL				
TREATMENT			TITLE V75 PR Bar	
UNLESS OTHERWISE SPECIFIED DIMENSIONS ARE IN MILLIMETERS			SIZE A4	DWG NO
1st ANGLE ANGLES ±0.1°			FILE NAME: V75 PR Bar.dft	
2 PL ±0.02 3 PL ±0.005			SCALE:	WEIGHT: SHEET 3 OF 3