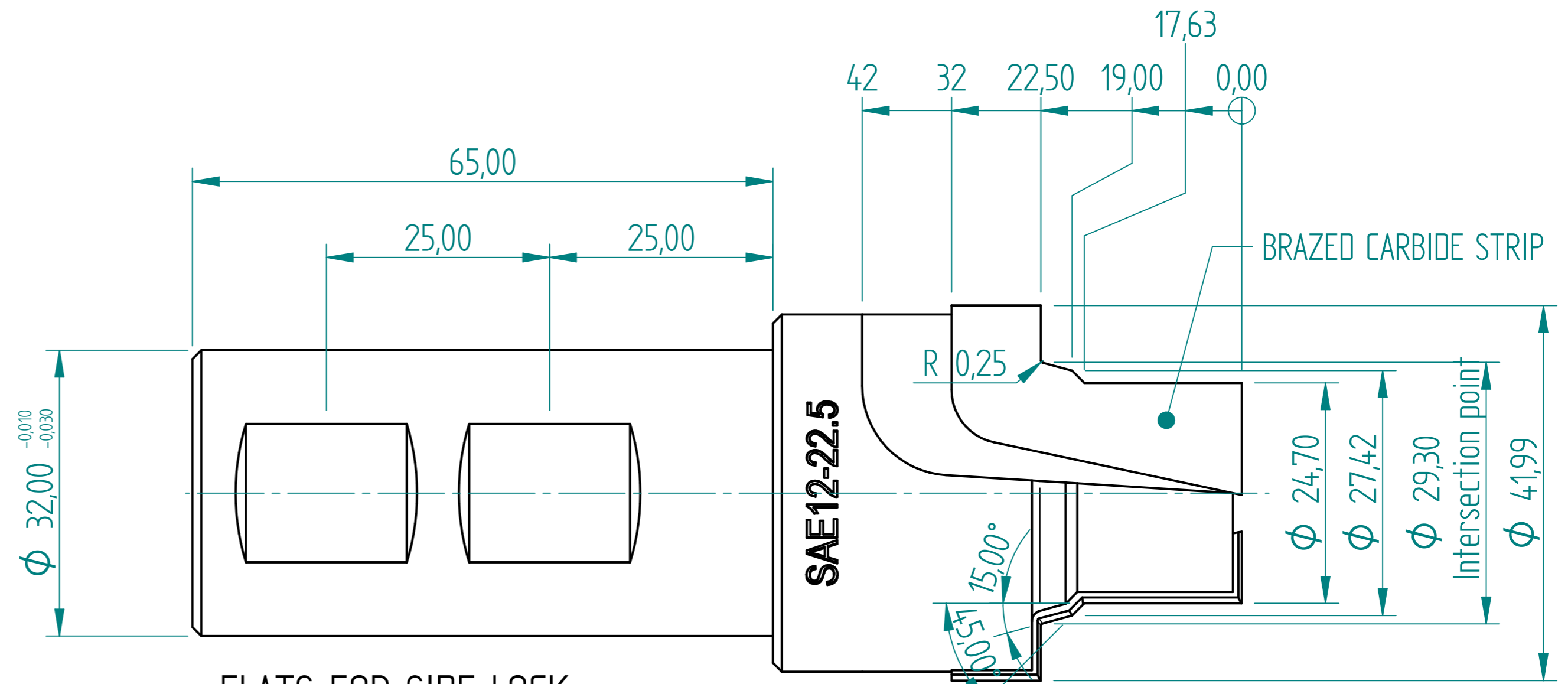
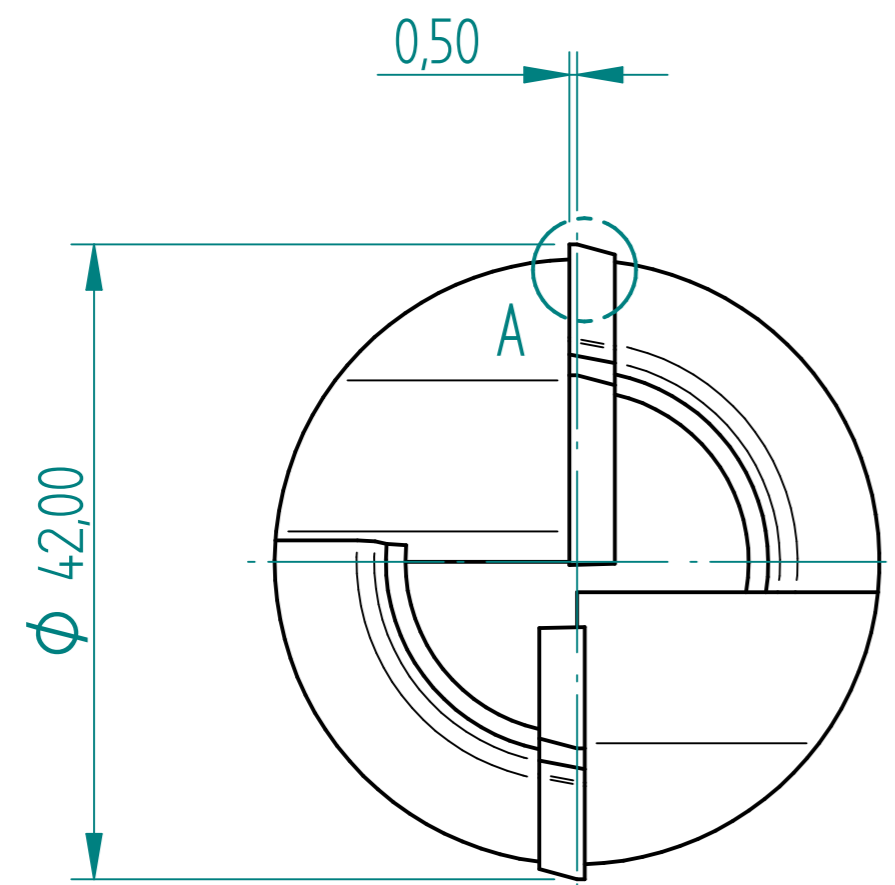


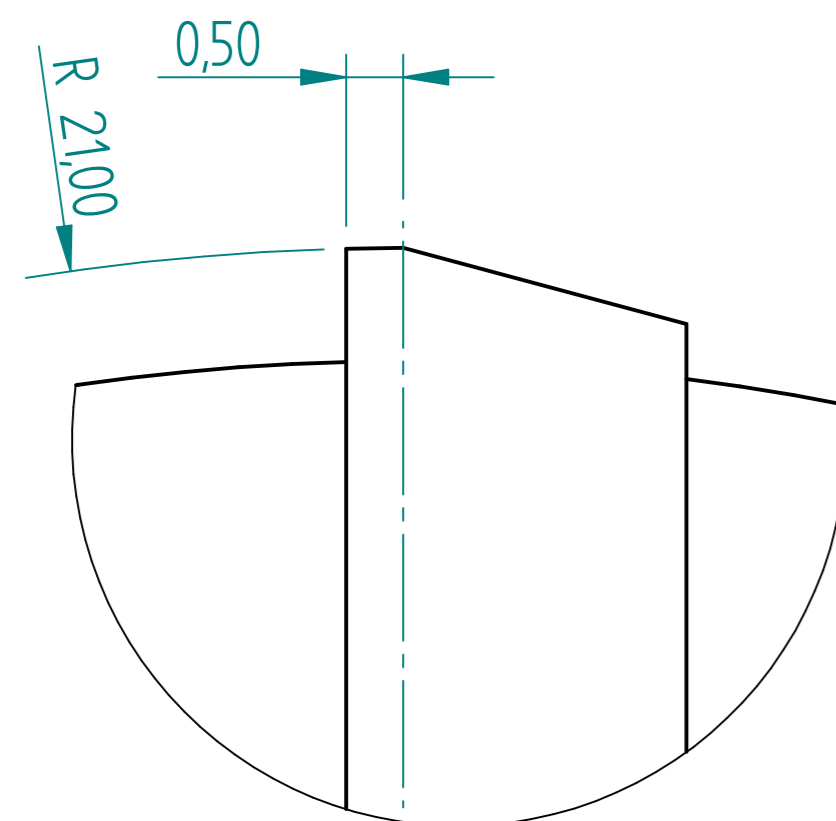
REVISION HISTORY			
REV	DESCRIPTION	DATE	APPROVED

0.5 ABOVE CENTRE LINE
BACK RAKE FROM CENTRE LINE

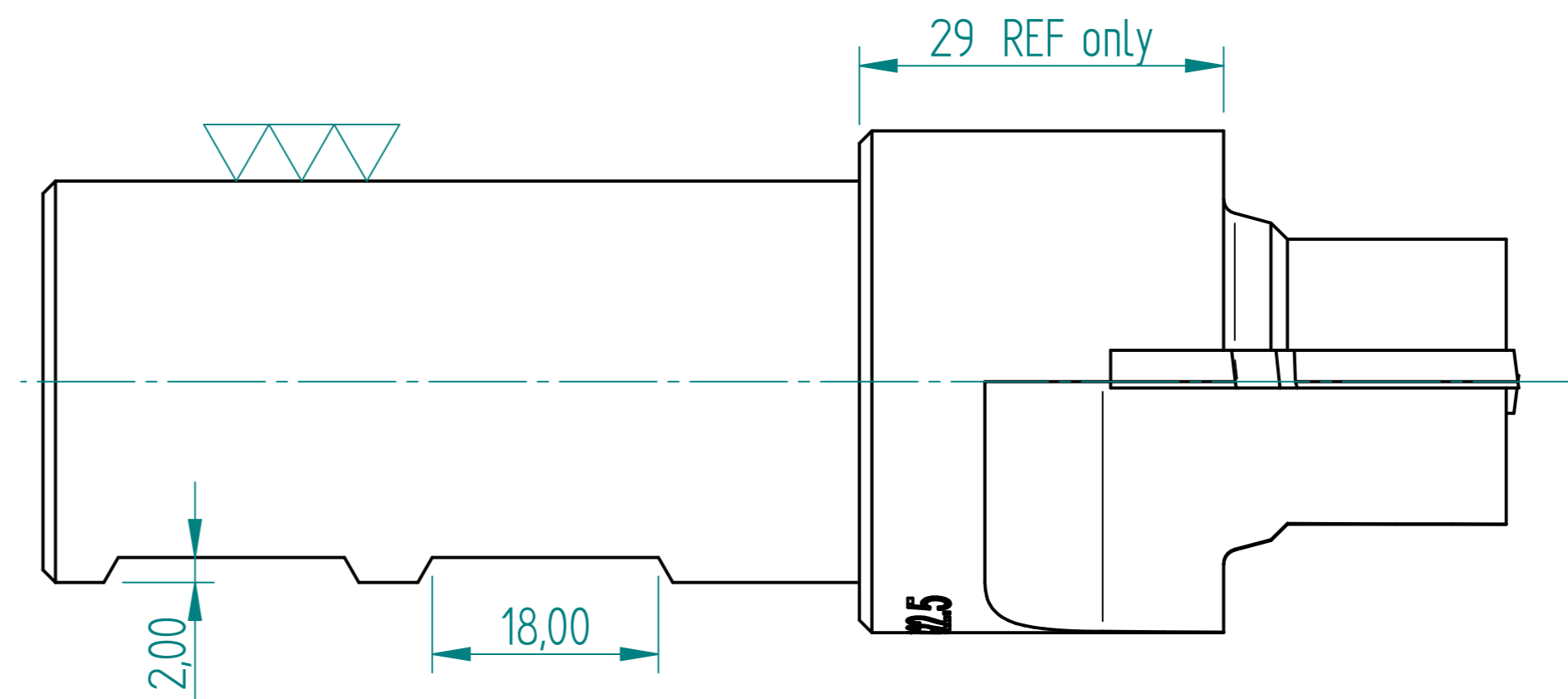


FLATS FOR SIDE LOCK

CAVITY SIZES



DETAIL A



SAE12 x 22.5 Bar

TO CUT SAE#12 CAVITY BY
22.5 DEEP IN CAST IRON.
2 FLUTES CENTRE CUTTING

DRAWN	NAME	DATE	PREMAC	
APPROVED	Dan	09/04/23		
MATERIAL			TITLE	
TREATMENT			SAE12 - 22.5 Bar	
UNLESS OTHERWISE SPECIFIED DIMENSIONS ARE IN MILLIMETERS ANGLES ±0.1°			SIZE A4	DWG NO
1st ANGLE 2 PL ±0.02 3 PL ±0.005			FILE NAME: SAE12x22.5 Bar.dft	
SCALE:		WEIGHT:	SHEET 1 OF 2	

REVISION HISTORY			
REV	DESCRIPTION	DATE	APPROVED



SAE12 x 22.5 Bar

	NAME	DATE	PREMAC		
DRAWN	Dan	09/04/23			
APPROVED					
MATERIAL					
TREATMENT			TITLE SAE12 - 22.5 Bar		
UNLESS OTHERWISE SPECIFIED DIMENSIONS ARE IN MILLIMETERS			SIZE A4	DWG NO	REV
1 ST ANGLE ANGLES ±0.1°			FILE NAME: SAE12x22.5 Bar.dft		
2 PL ±0.02 3 PL ±0.005			SCALE:	WEIGHT:	SHEET 2 OF 2