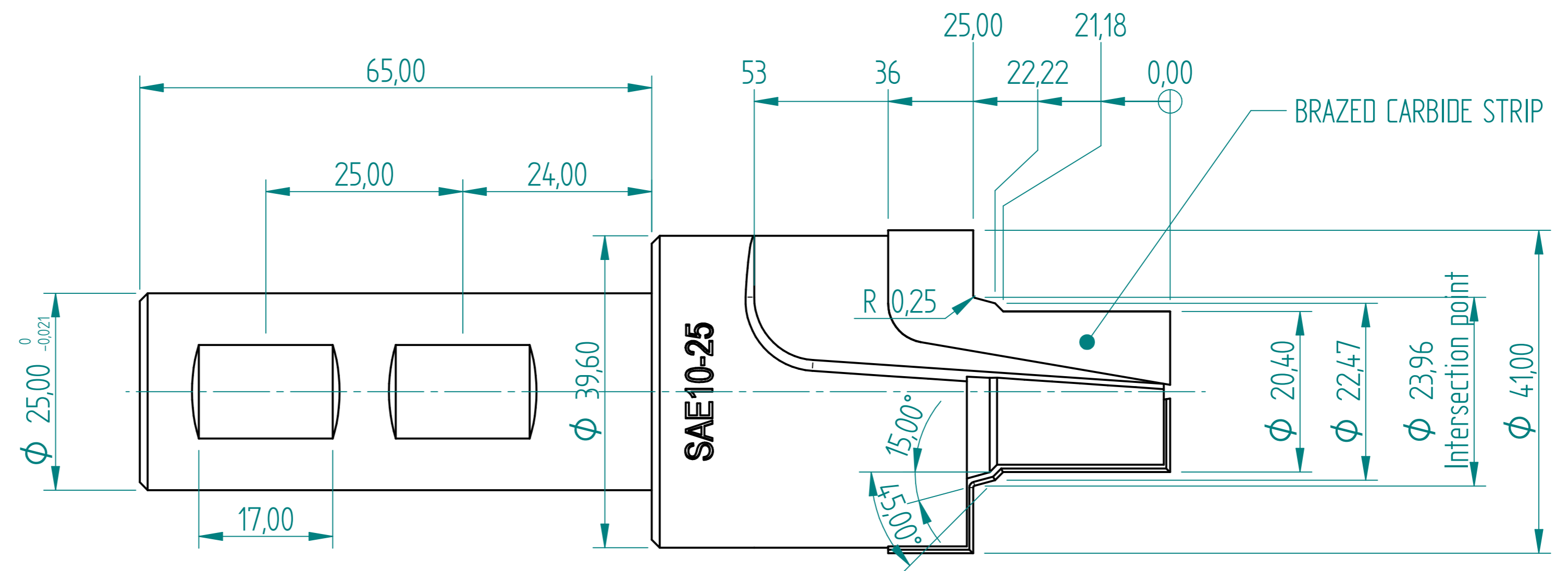
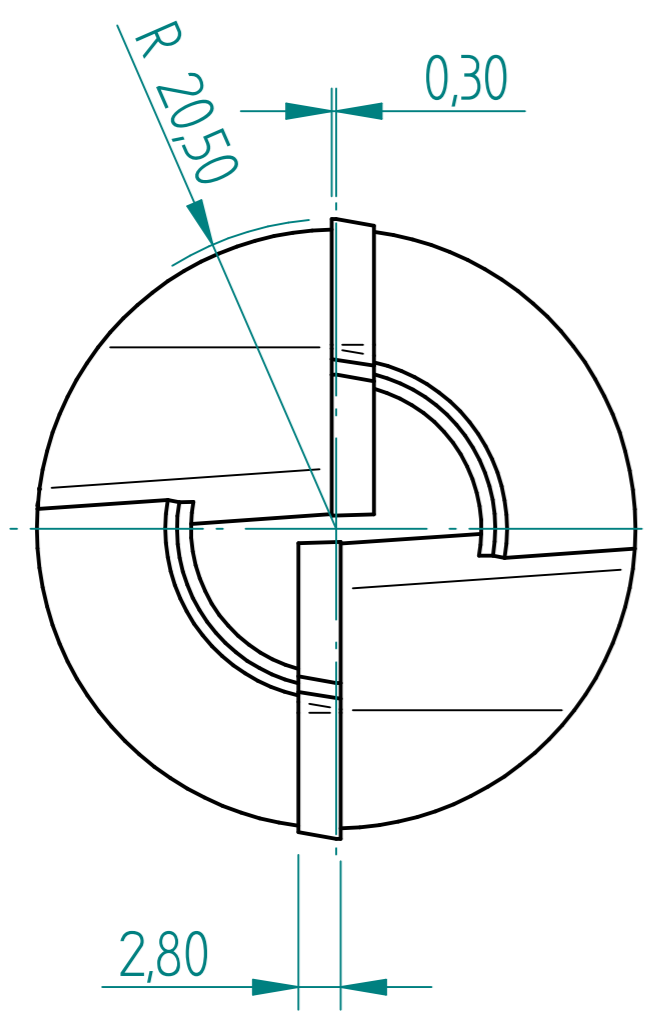
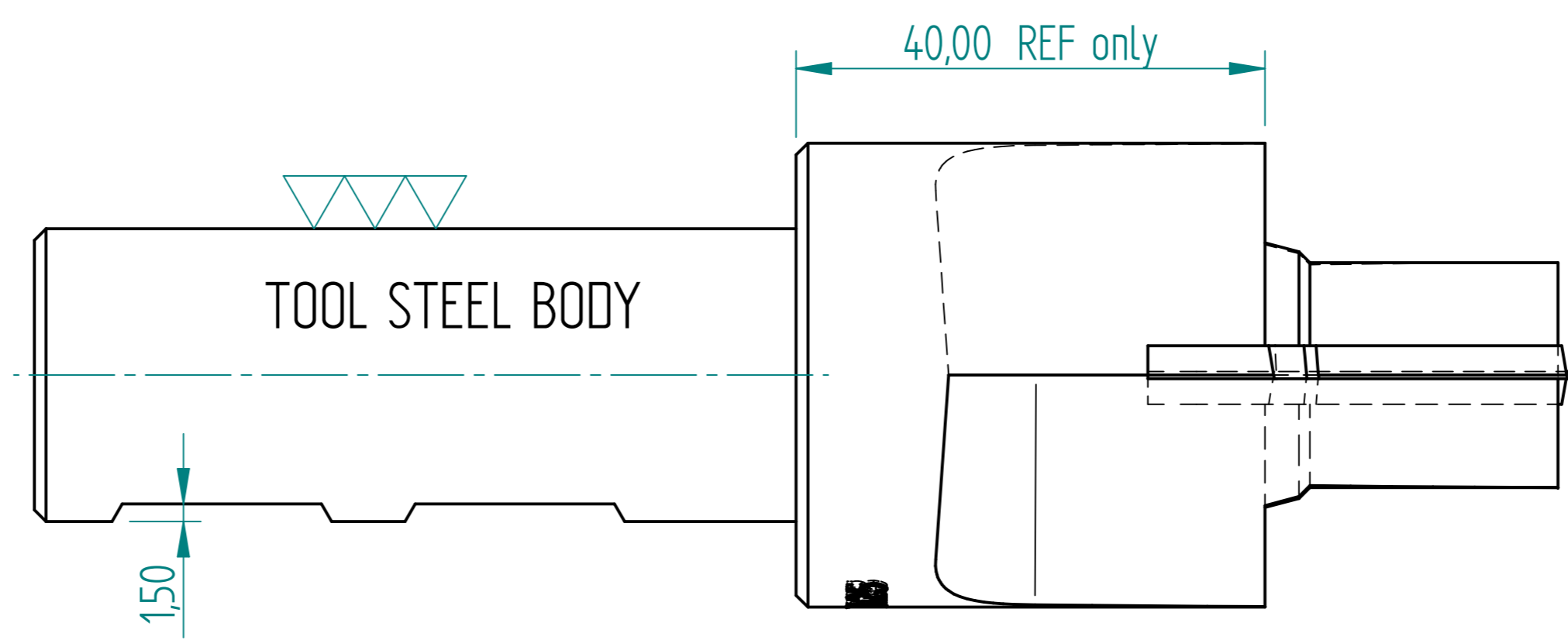


REVISION HISTORY			
REV	DESCRIPTION	DATE	APPROVED



SAE#10 CAVITY SIZES

TO CUT A SAE#10 CAVITY BY 25mm DEEP IN CAST IRON 2 CARBIDE STRIPS

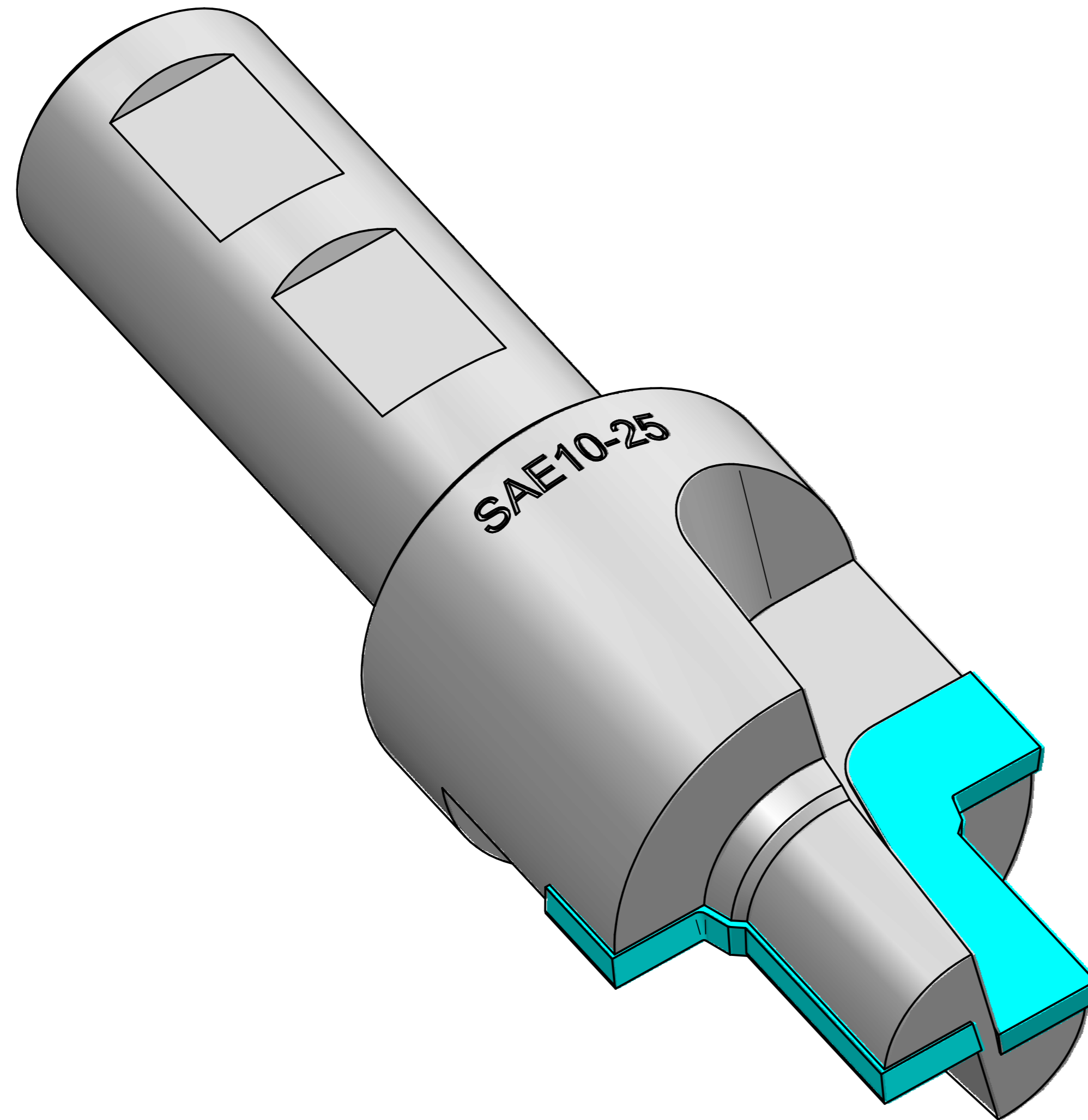


Dia 25-65 long shank with flats on for Side Lock Tool Holder

SAE#10 - 25

DRAWN	NAME	DATE	PREMAC	
APPROVED	Dan	09/04/23		
MATERIAL			TITLE	
TREATMENT			SAE#10x25	
UNLESS OTHERWISE SPECIFIED DIMENSIONS ARE IN MILLIMETERS			SIZE	DWG NO
ANGLES ±0.1°			A4	REV
1st ANGLE			FILE NAME: SAE10x25.dft	
2 PL ±0.02 3 PL ±0.005			SCALE:	WEIGHT:
			SHEET 1 OF 2	

REVISION HISTORY			
REV	DESCRIPTION	DATE	APPROVED



	NAME	DATE	PREMAC		
DRAWN	Dan	09/04/23			
APPROVED					
MATERIAL					
TREATMENT			TITLE SAE#10x25		
UNLESS OTHERWISE SPECIFIED DIMENSIONS ARE IN MILLIMETERS			SIZE A4	DWG NO	REV
1 ST ANGLE 2 PL ±0.02 3 PL ±0.005			FILE NAME: SAE10x25.dft		
			SCALE:	WEIGHT:	SHEET 2 OF 2