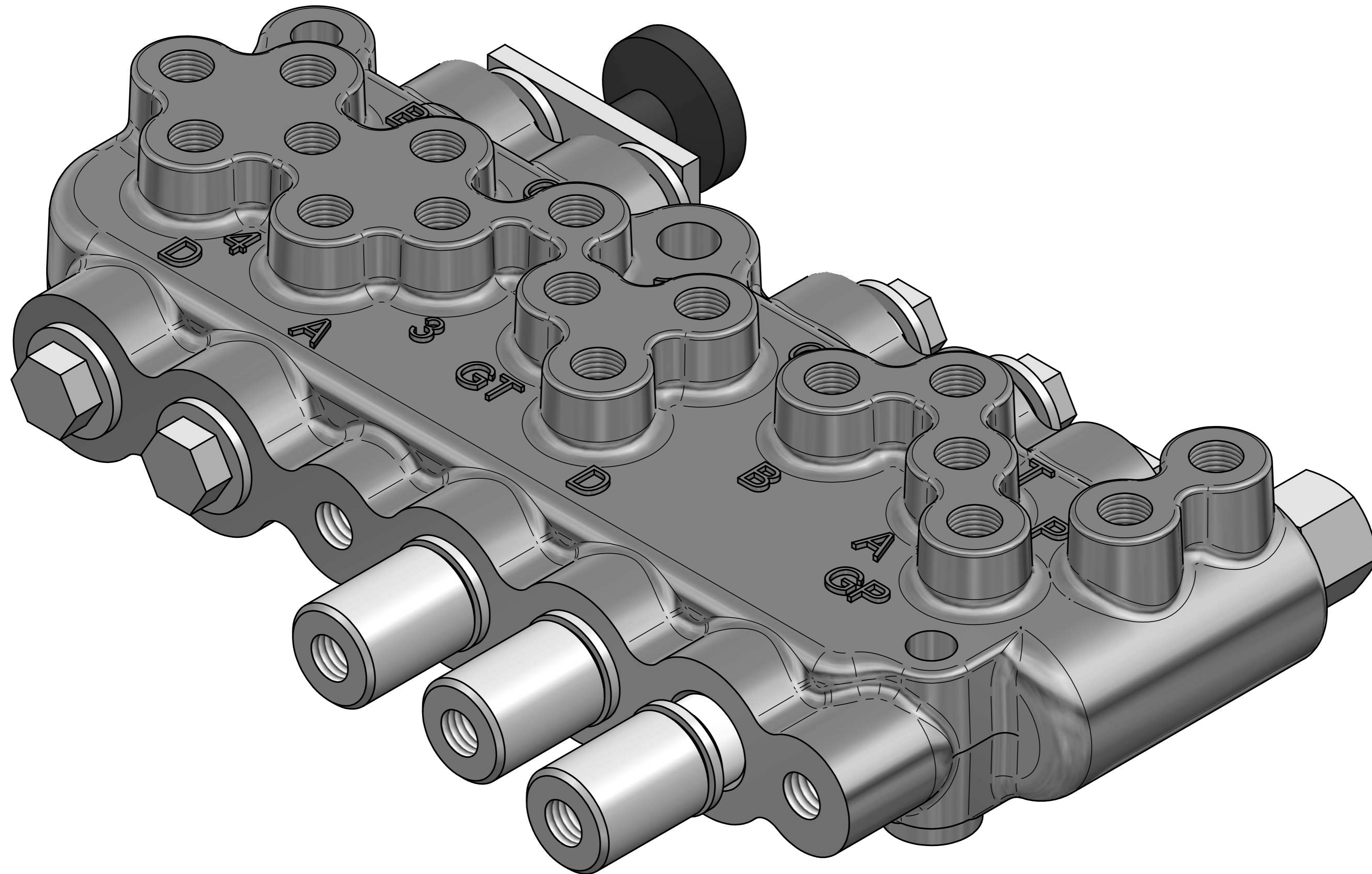
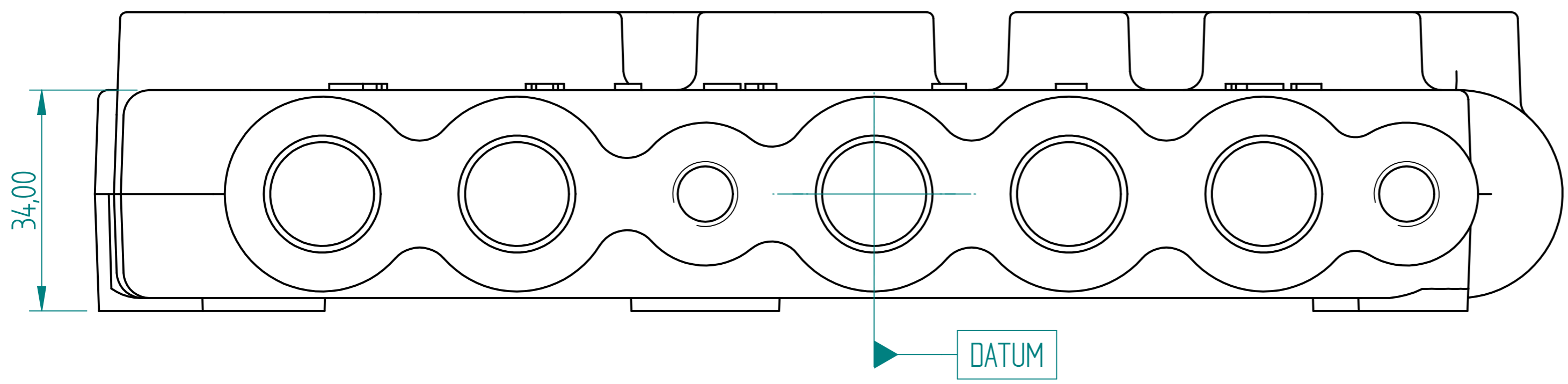
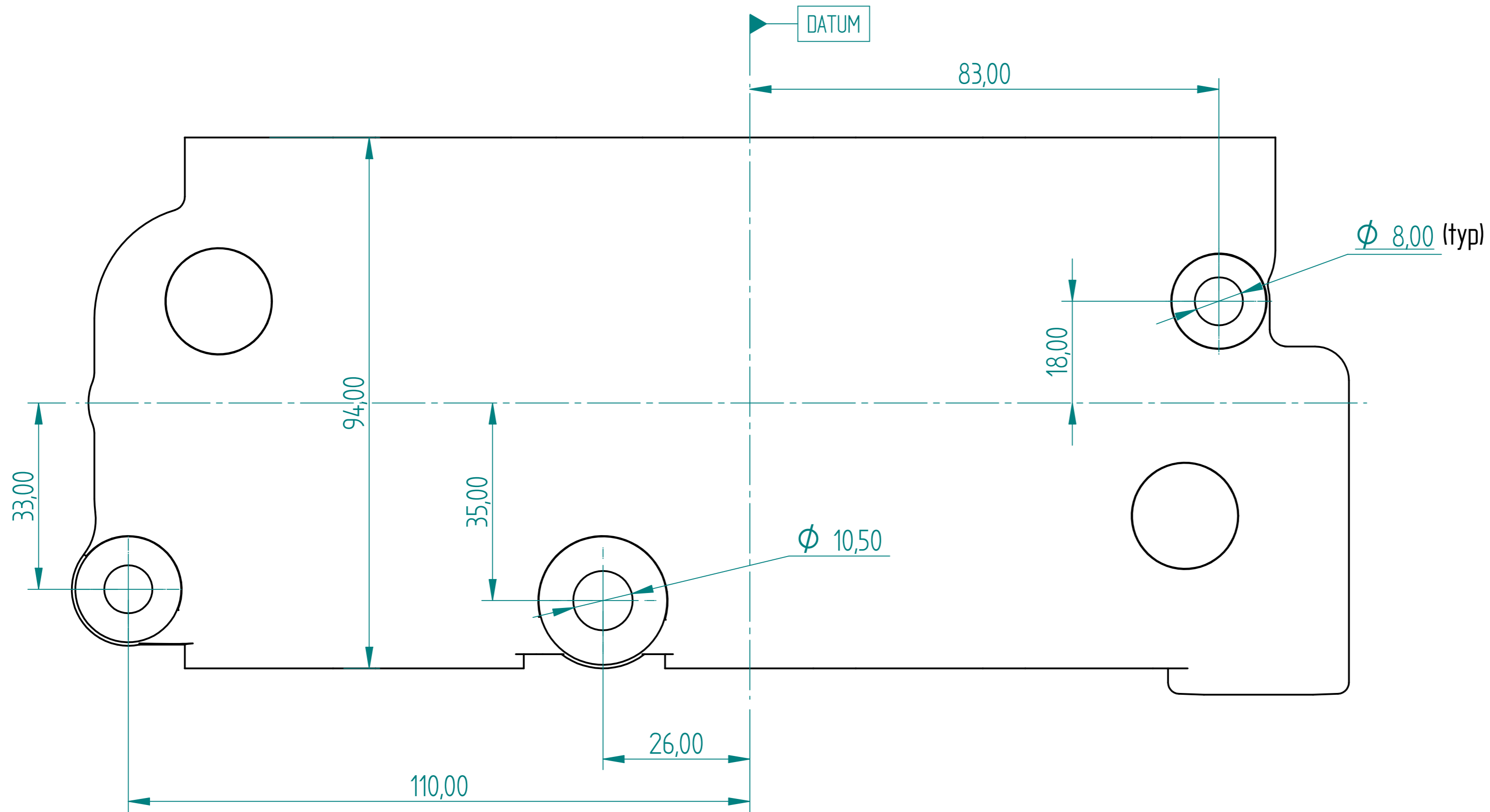


| REVISION HISTORY | | | |
|------------------|-------------|------|----------|
| REV | DESCRIPTION | DATE | APPROVED |
| | | | |



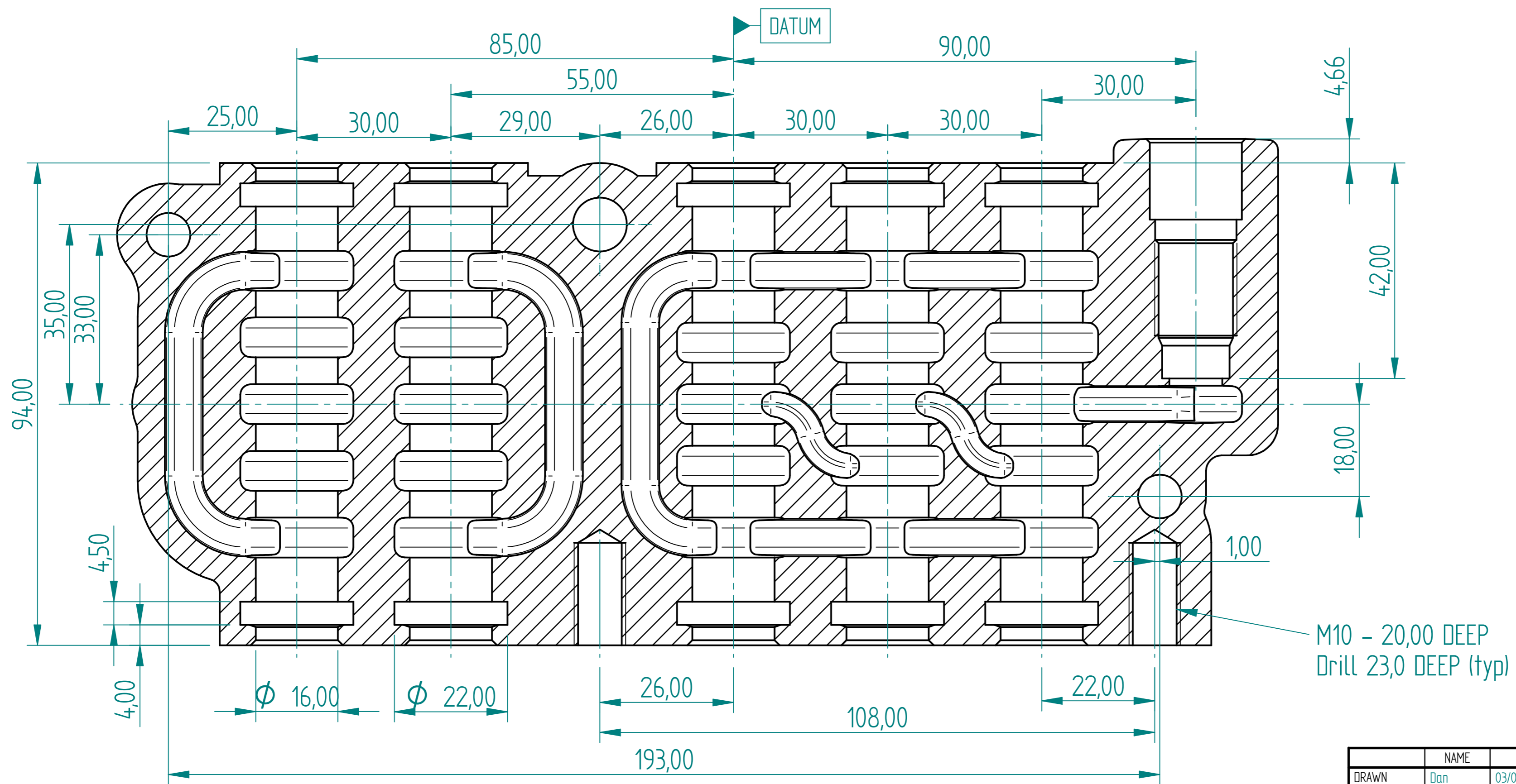
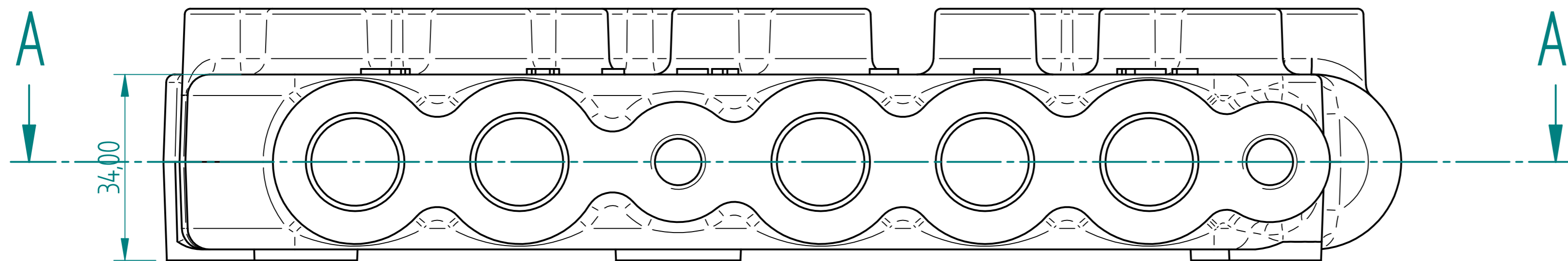
| | | | | |
|---|------|----------|---|-----------------------|
| | NAME | DATE | PREMAC | |
| DRAWN | Dan | 03/09/09 | PRECISION MACHINE MANUFACTURERS (PTY)LTD. | |
| APPROVED | | | TITLE | |
| MATERIAL | | | | |
| TREATMENT | | | | |
| UNLESS OTHERWISE SPECIFIED DIMENSIONS ARE IN MILLIMETERS | | | SIZE A2 | DWG NO |
| ANGLES ±0.1° | | | REV | |
| 2 PL ±0.02 3 PL ±0.005 | | | FILE NAME: 5 Spool Valve.dft | |
| | | | SCALE: | WEIGHT: SHEET 2 OF 12 |

| REVISION HISTORY | | | |
|------------------|-------------|------|----------|
| REV | DESCRIPTION | DATE | APPROVED |
| | | | |



| | | | | | |
|---|-----|-------|----------|---|-----------------------|
| DRAWN | Qan | DATE | 03/09/09 | PREMAC PRECISION MACHINE MANUFACTURERS (PTY)LTD. | |
| APPROVED | | | | | |
| MATERIAL | | TITLE | | | |
| TREATMENT | | | | | |
| UNLESS OTHERWISE SPECIFIED DIMENSIONS ARE IN MILLIMETERS ANGLES $\pm 0,1^\circ$ | | | | SIZE A2 | DWG NO |
| 1 ST ANGLE | | | | FILE NAME: 5 Spool Valve.dft | REV |
| 2 PL $\pm 0,02$ 3 PL $\pm 0,005$ | | | | SCALE: | WEIGHT: SHEET 3 OF 12 |

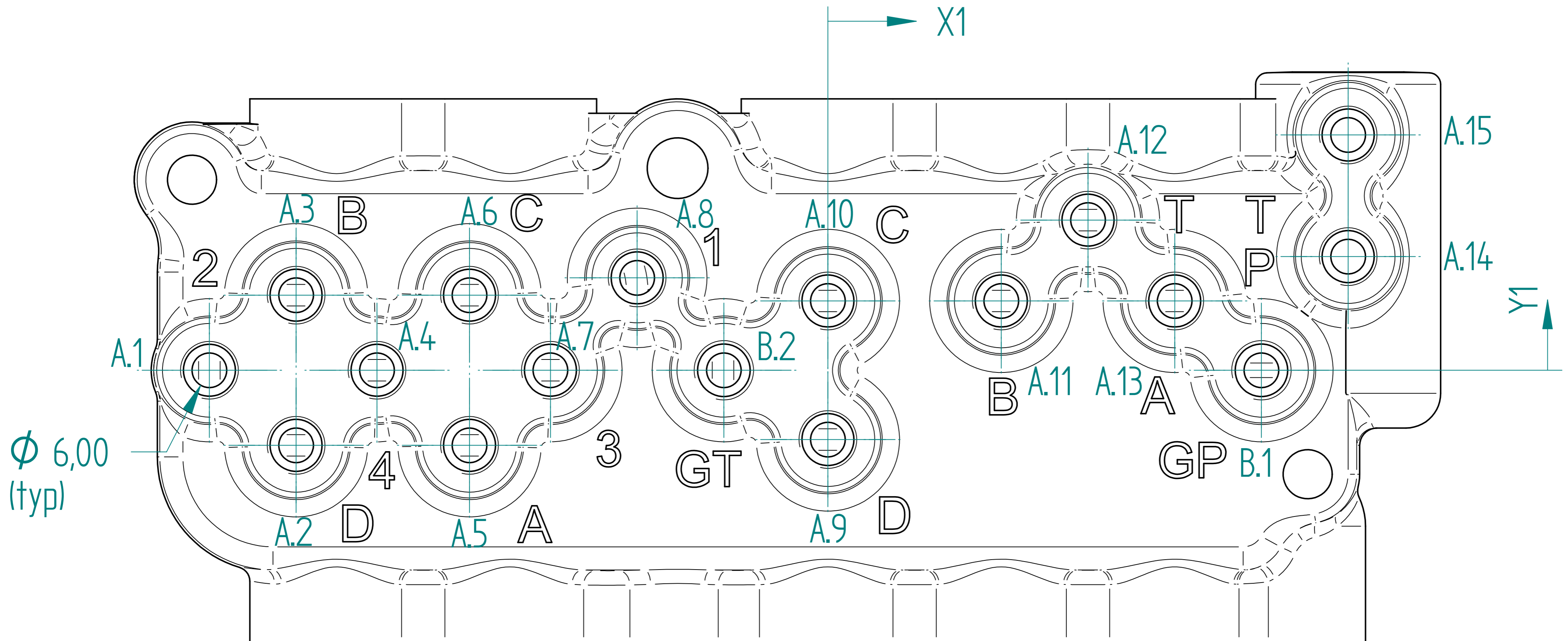
| REVISION HISTORY | | | |
|------------------|-------------|------|----------|
| REV | DESCRIPTION | DATE | APPROVED |
| | | | |



SECTION A-A

| | | | | |
|--|------|----------|---|---------|
| DRAWN | NAME | DATE | PREMAC | |
| APPROVED | Dan | 03/09/09 | PRECISION MACHINE MANUFACTURERS (PTY)LTD. | |
| MATERIAL | | | TITLE | |
| TREATMENT | | | FILE NAME: 5 Spool Valve.dft | |
| UNLESS OTHERWISE SPECIFIED DIMENSIONS ARE IN MILLIMETERS | | | SIZE | DWG NO |
| ANGLES $\pm 0,1^\circ$ | | | A2 | REV |
| 2 PL $\pm 0,02$ 3 PL $\pm 0,005$ | | | SCALE: | WEIGHT: |
| | | | SHEET 4 OF 12 | |

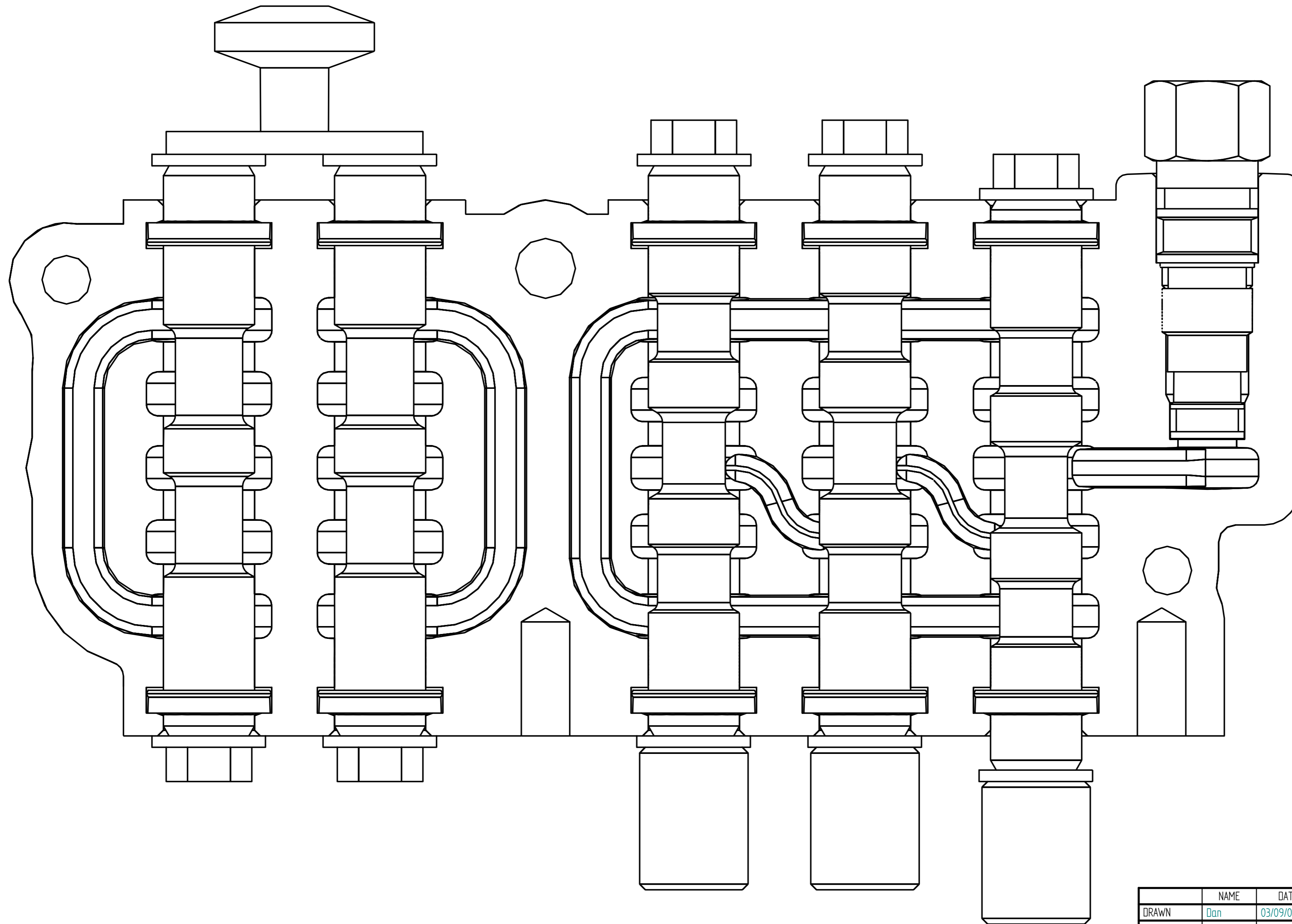
| REVISION HISTORY | | | |
|------------------|-------------|------|----------|
| REV | DESCRIPTION | DATE | APPROVED |
| | | | |



| Hole Table | | | | Hole Table | | | | Hole Table | | | |
|------------|---------|--------|----------------|------------|--------|--------|----------------|------------|--------|-------|--------------------|
| Hole | X | Y | Callout 1 | Hole | X | Y | Callout 1 | Hole | X | Y | Callout 1 |
| A.1 | -107,00 | 0,00 | M10 x 1-12,00▽ | A.7 | -48,00 | 0,00 | M10 x 1-12,00▽ | A.13 | 60,00 | 12,00 | M10 x 1-12,00▽ |
| A.2 | -92,00 | -13,00 | M10 x 1-12,00▽ | A.8 | -33,00 | 16,00 | M10 x 1-12,00▽ | A.14 | 90,00 | 19,68 | M10 x 1-12,00▽ |
| A.3 | -92,00 | 13,00 | M10 x 1-12,00▽ | A.9 | 0,00 | -12,00 | M10 x 1-12,00▽ | A.15 | 90,00 | 40,74 | M10 x 1-12,00▽ |
| A.4 | -78,00 | 0,00 | M10 x 1-12,00▽ | A.10 | 0,00 | 12,00 | M10 x 1-12,00▽ | B.1 | 75,00 | 0,00 | 1/8-27 NPSM-12,00▽ |
| A.5 | -62,00 | -13,00 | M10 x 1-12,00▽ | A.11 | 30,00 | 12,00 | M10 x 1-12,00▽ | B.2 | -18,00 | 0,00 | 1/8-27 NPSM-12,00▽ |
| A.6 | -62,00 | 13,00 | M10 x 1-12,00▽ | A.12 | 45,00 | 26,00 | M10 x 1-12,00▽ | | | | |

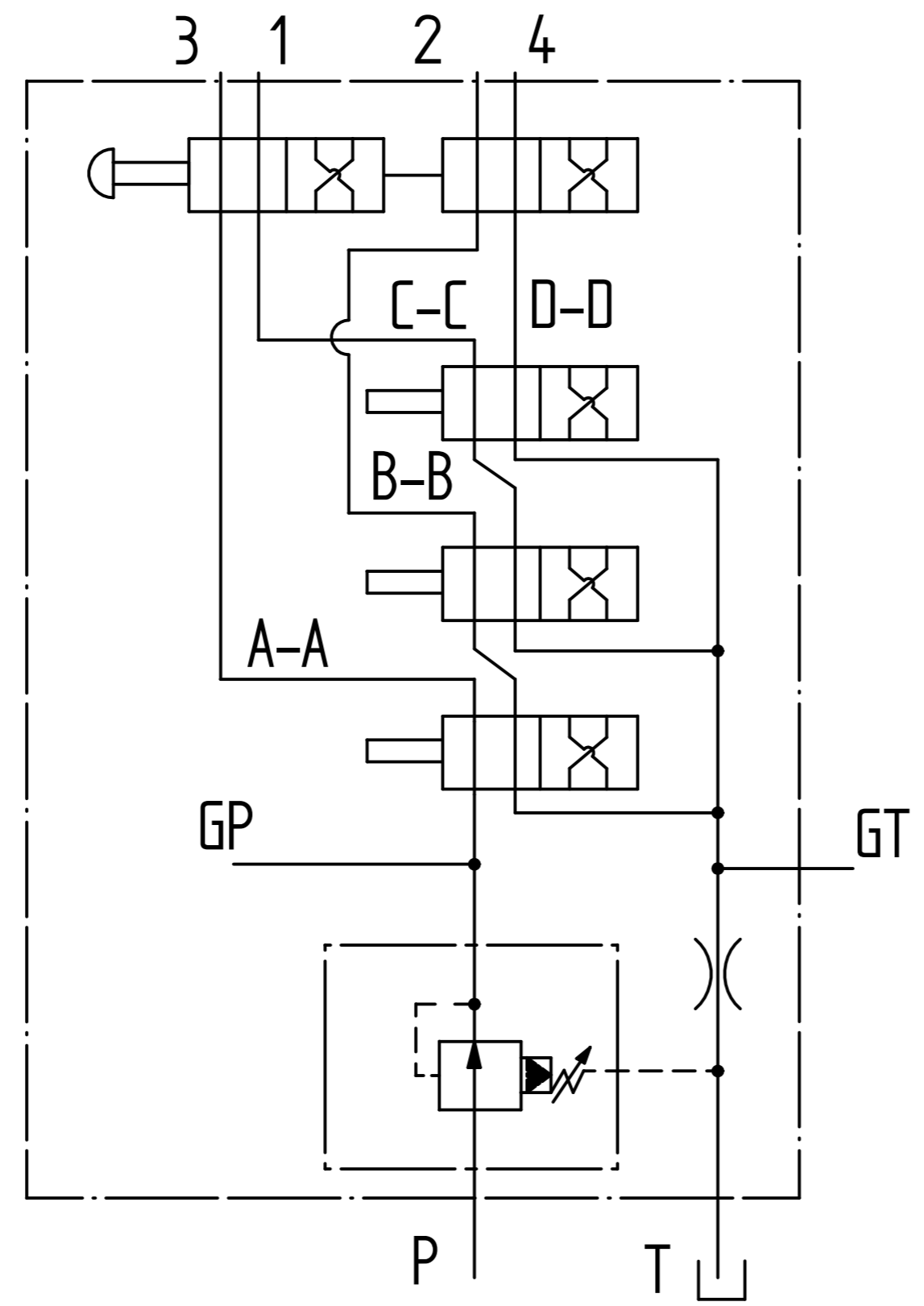
| | | | | | |
|---|------|----------|---|---------|---------------|
| | NAME | DATE | PREMAC | | |
| DRAWN | Dan | 03/09/09 | PRECISION MACHINE MANUFACTURERS (PTY)LTD. | | |
| APPROVED | | | TITLE | | |
| MATERIAL | | | SIZE | DWG NO | REV |
| TREATMENT | | | A2 | | |
| UNLESS OTHERWISE SPECIFIED DIMENSIONS ARE IN MILLIMETERS ANGLES ±0.1° | | | FILE NAME: 5 Spool Valve.dft | | |
| 2 PL ±0.02 3 PL ±0.005 | | | SCALE: | WEIGHT: | SHEET 5 OF 12 |

| REVISION HISTORY | | | |
|------------------|-------------|------|----------|
| REV | DESCRIPTION | DATE | APPROVED |
| | | | |



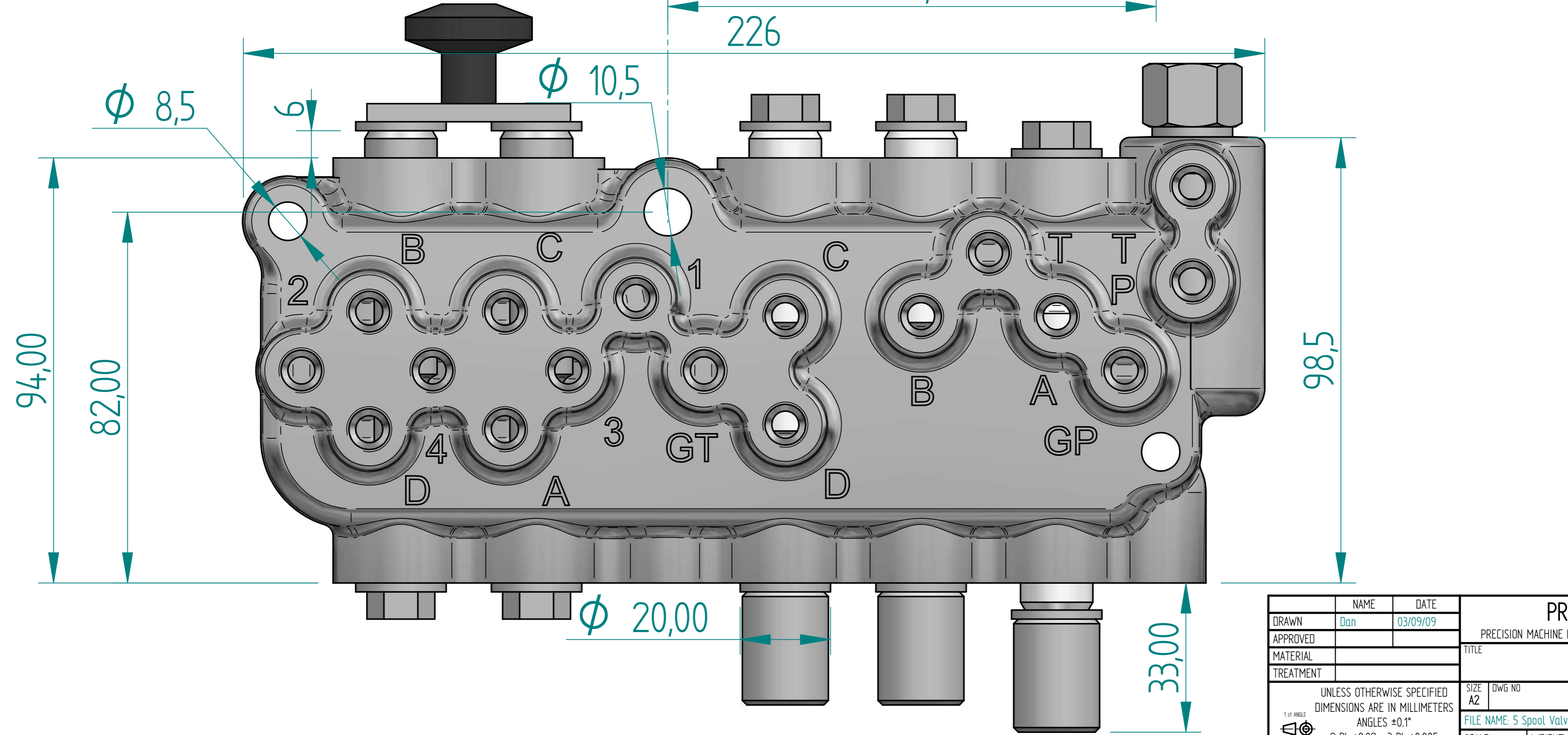
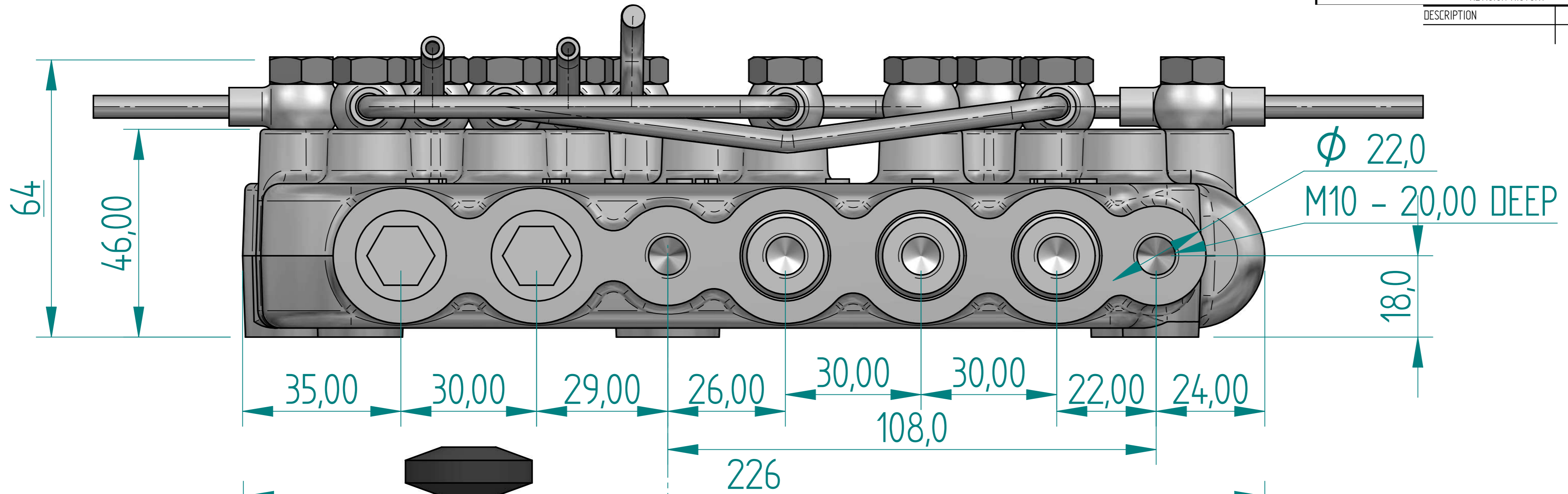
| | | | | |
|---|------|----------|---|-----------------------|
| | NAME | DATE | PREMAC | |
| DRAWN | Dan | 03/09/09 | PRECISION MACHINE MANUFACTURERS (PTY)LTD. | |
| APPROVED | | | TITLE | |
| MATERIAL | | | | |
| TREATMENT | | | | |
| UNLESS OTHERWISE SPECIFIED DIMENSIONS ARE IN MILLIMETERS | | | SIZE A2 | DWG NO |
| 1st ANGLE | | | FILE NAME: 5 Spool Valve.dft | REV |
| 2 PL ±0.02 3 PL ±0.005 | | | SCALE: | WEIGHT: SHEET 6 OF 12 |

| REVISION HISTORY | | | |
|------------------|-------------|------|----------|
| REV | DESCRIPTION | DATE | APPROVED |
| | | | |



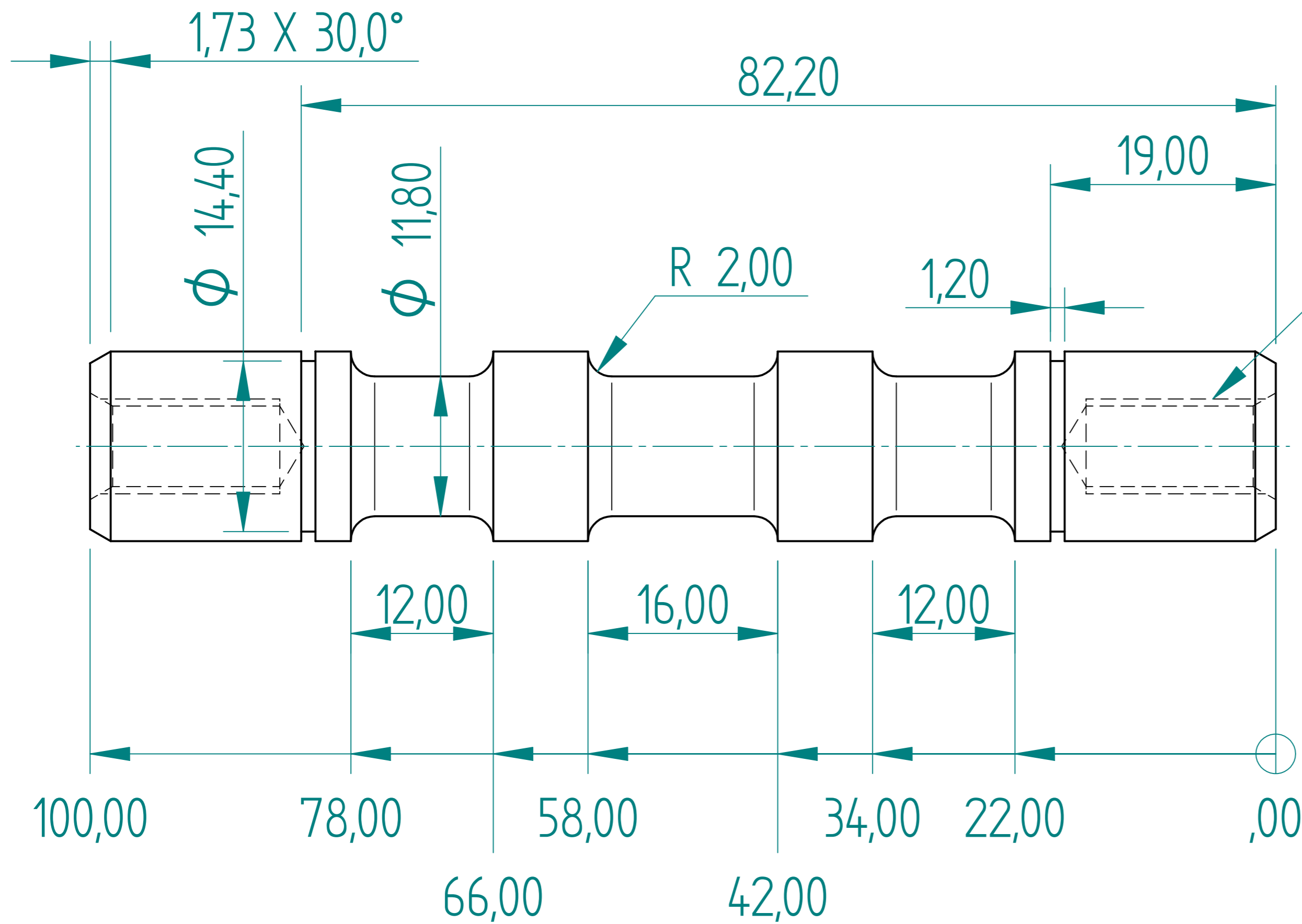
| | | | | |
|---|------|----------|---|-----------------------|
| | NAME | DATE | PREMAC | |
| DRAWN | Dan | 03/09/09 | PRECISION MACHINE MANUFACTURERS (PTY)LTD. | |
| APPROVED | | | TITLE | |
| MATERIAL | | | | |
| TREATMENT | | | | |
| UNLESS OTHERWISE SPECIFIED DIMENSIONS ARE IN MILLIMETERS ANGLES ±0.1° | | | SIZE A3 | DWG NO |
| 1st ANGLE 2 PL ±0.02 3 PL ±0.005 | | | FILE NAME: 5 Spool Valve.dft | REV |
| | | | SCALE: | WEIGHT: SHEET 7 OF 12 |

| REVISION HISTORY | | |
|------------------|------|----------|
| DESCRIPTION | DATE | APPROVED |
| | | |

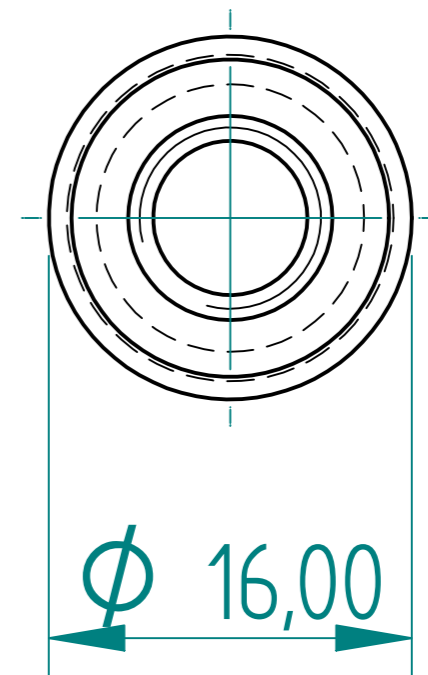


| | | | |
|--|----------|---|---------|
| NAME | DATE | PREMAC | |
| DRAWN: Dan | 03/09/09 | PRECISION MACHINE MANUFACTURERS (PTY)LTD. | |
| APPROVED | | TITLE | |
| MATERIAL | | SIZE: A2 | DWG NO: |
| TREATMENT | | FILE NAME: 5 Spool Valve.dft | |
| UNLESS OTHERWISE SPECIFIED DIMENSIONS ARE IN MILLIMETERS | | SCALE: | WEIGHT: |
| ANGLES $\pm 0,1^\circ$ | | SHEET 8 OF 12 | |
| 2 PL $\pm 0,02$ 3 PL $\pm 0,005$ | | | |

| REVISION HISTORY | | | |
|------------------|-------------|------|----------|
| REV | DESCRIPTION | DATE | APPROVED |
| | | | |



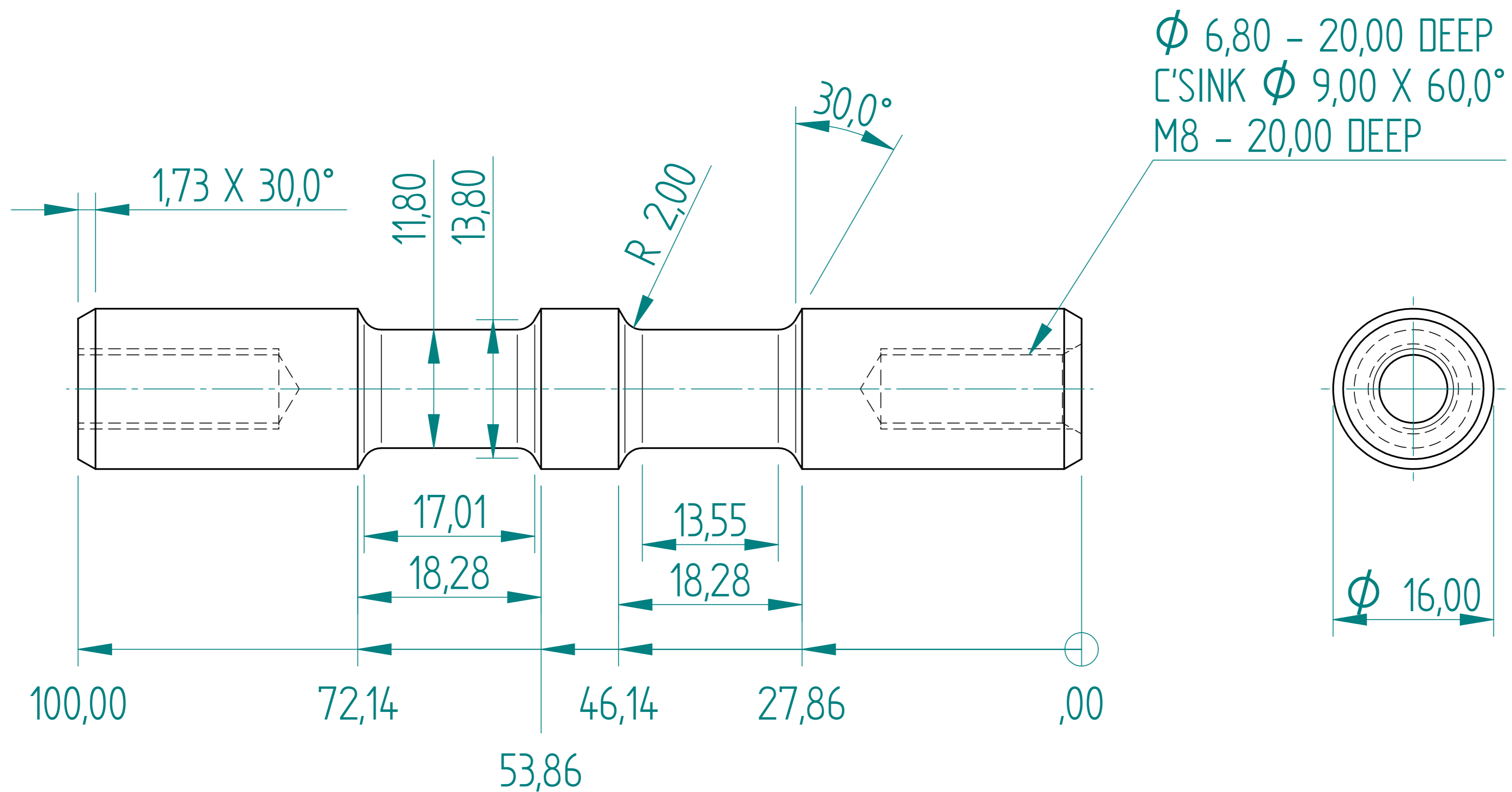
ϕ 6,80 - 16,00 DEEP
 C'SINK ϕ 9,00 X 60,0°
 M8



VALVE SPOOL

| | | | | |
|---|------|----------|---|---------------|
| | NAME | DATE | PREMAC | |
| DRAWN | Dan | 03/09/09 | PRECISION MACHINE MANUFACTURERS (PTY)LTD. | |
| APPROVED | | | TITLE | |
| MATERIAL | | | SIZE | DWG NO |
| TREATMENT | | | A2 | |
| UNLESS OTHERWISE SPECIFIED DIMENSIONS ARE IN MILLIMETERS | | | FILE NAME: 5 Spool Valve.dft | REV |
| 1st ANGLE | | | SCALE: | WEIGHT: |
| 2 PL ±0.02 3 PL ±0.005 | | | | SHEET 9 OF 12 |

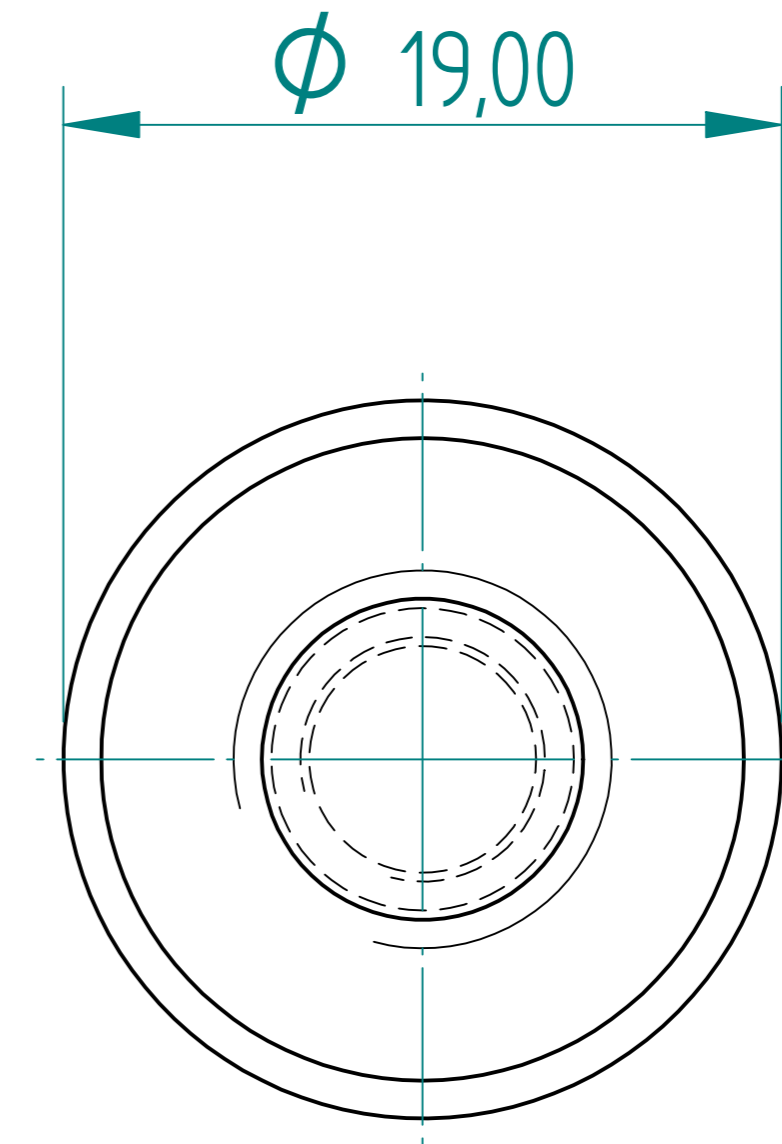
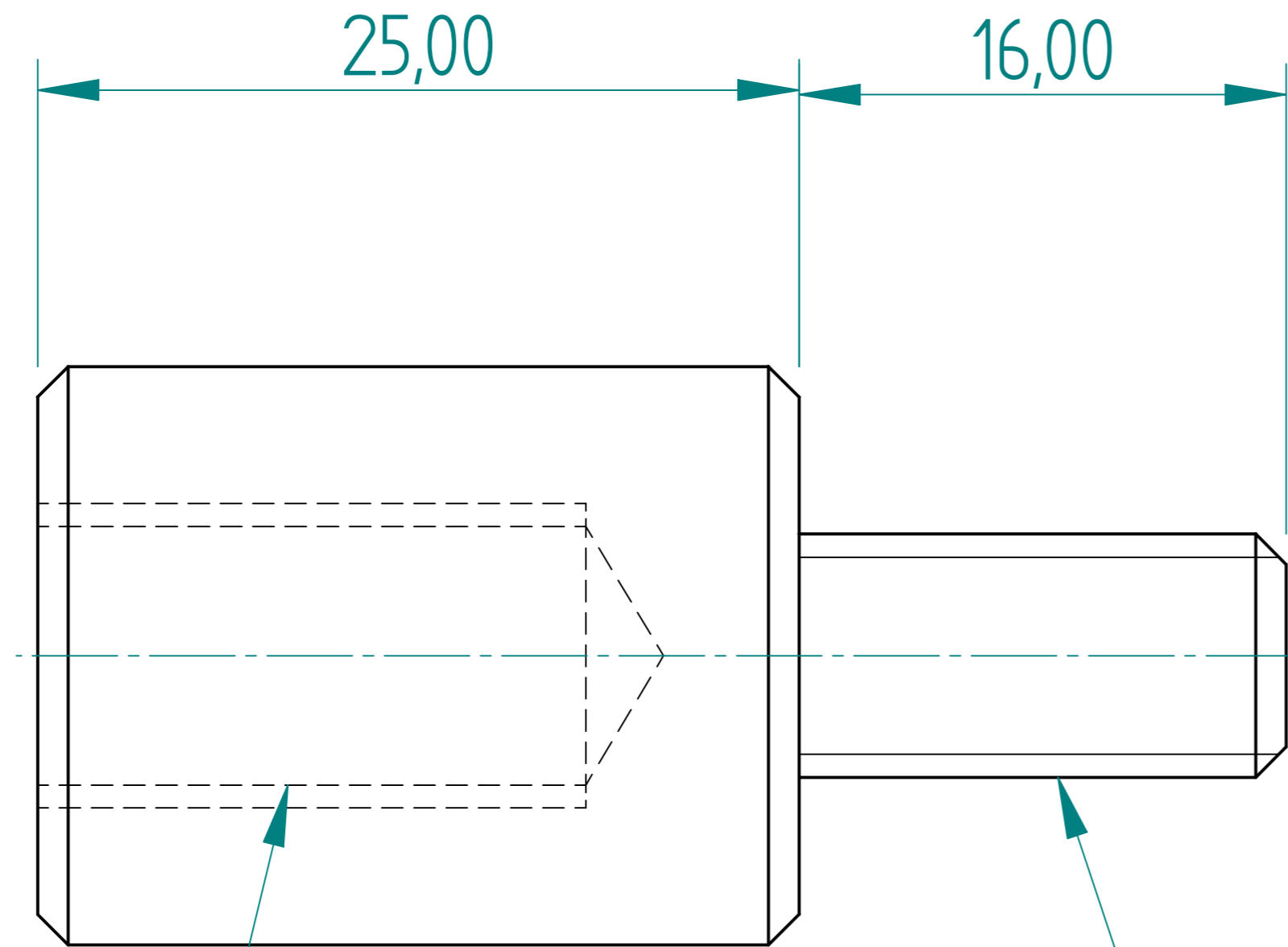
| REVISION HISTORY | | | |
|------------------|-------------|------|----------|
| REV | DESCRIPTION | DATE | APPROVED |
| | | | |



CROSSOVER SPOOL

| | | | | | |
|---|-----|------|----------|---|------------------------|
| DRAWN | Qan | DATE | 03/09/09 | PREMAC | |
| APPROVED | | | | PRECISION MACHINE MANUFACTURERS (PTY)LTD. | |
| MATERIAL | | | | TITLE | |
| TREATMENT | | | | REV | |
| UNLESS OTHERWISE SPECIFIED DIMENSIONS ARE IN MILLIMETERS ANGLES $\pm 0,1^\circ$ | | | | SIZE | DWG NO |
| 1st ANGLE | | | | A2 | |
| 2 PL $\pm 0,02$ 3 PL $\pm 0,005$ | | | | FILE NAME: 5 Spool Valve.dft | REV |
| | | | | SCALE: | WEIGHT: SHEET 10 OF 12 |

| REVISION HISTORY | | | |
|------------------|-------------|------|----------|
| REV | DESCRIPTION | DATE | APPROVED |
| | | | |

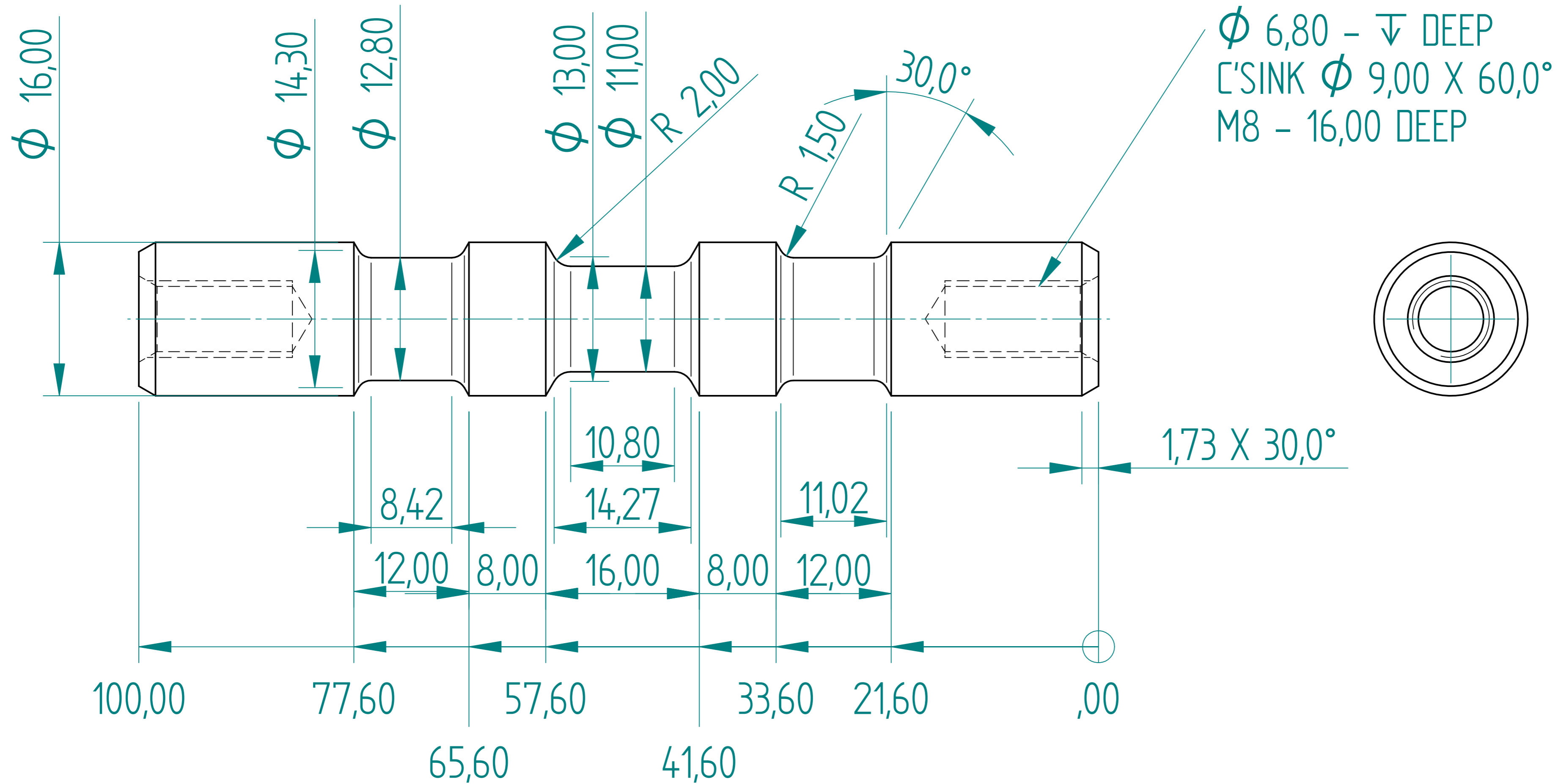


M10 - 18,00 DEEP

M8

| | | | | |
|---|------|----------|---|------------------------|
| | NAME | DATE | PREMAC | |
| DRAWN | Dan | 03/09/09 | PRECISION MACHINE MANUFACTURERS (PTY)LTD. | |
| APPROVED | | | TITLE | |
| MATERIAL | | | | |
| TREATMENT | | | | |
| UNLESS OTHERWISE SPECIFIED DIMENSIONS ARE IN MILLIMETERS | | | SIZE A2 | DWG NO |
| 1 ST ANGLE ANGLES ±0.1° | | | FILE NAME: 5 Spool Valve.dft | |
| 2 PL ±0.02 3 PL ±0.005 | | | SCALE: | WEIGHT: SHEET 11 OF 12 |

| REVISION HISTORY | | | |
|------------------|-------------|------|----------|
| REV | DESCRIPTION | DATE | APPROVED |
| | | | |



| | | | | |
|---|------|----------|---|---------|
| | NAME | DATE | PREMAC | |
| DRAWN | Dan | 03/09/09 | PRECISION MACHINE MANUFACTURERS (PTY)LTD. | |
| APPROVED | | | TITLE | |
| MATERIAL | | | | |
| TREATMENT | | | | |
| UNLESS OTHERWISE SPECIFIED DIMENSIONS ARE IN MILLIMETERS | | | SIZE A2 | DWG NO |
| 1 ST ANGLE | | | REV | |
| ANGLES \pm 0,1° | | | FILE NAME: 5 Spool Valve.dft | |
| 2 PL \pm 0,02 3 PL \pm 0,005 | | | SCALE: | WEIGHT: |
| | | | SHEET 12 OF 12 | |