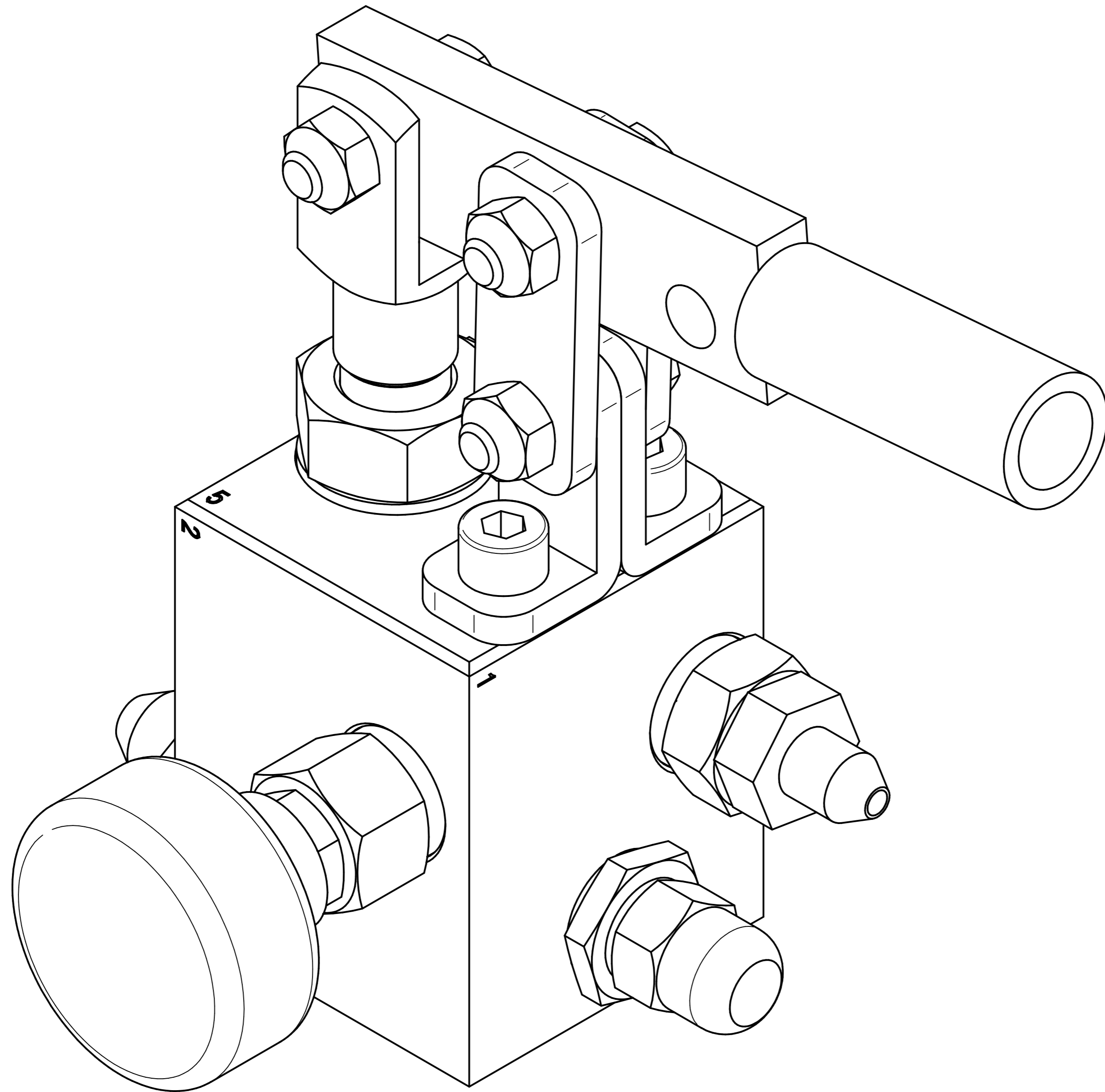


REVISION HISTORY			
REV	DESCRIPTION	DATE	APPROVED




Hand Pump

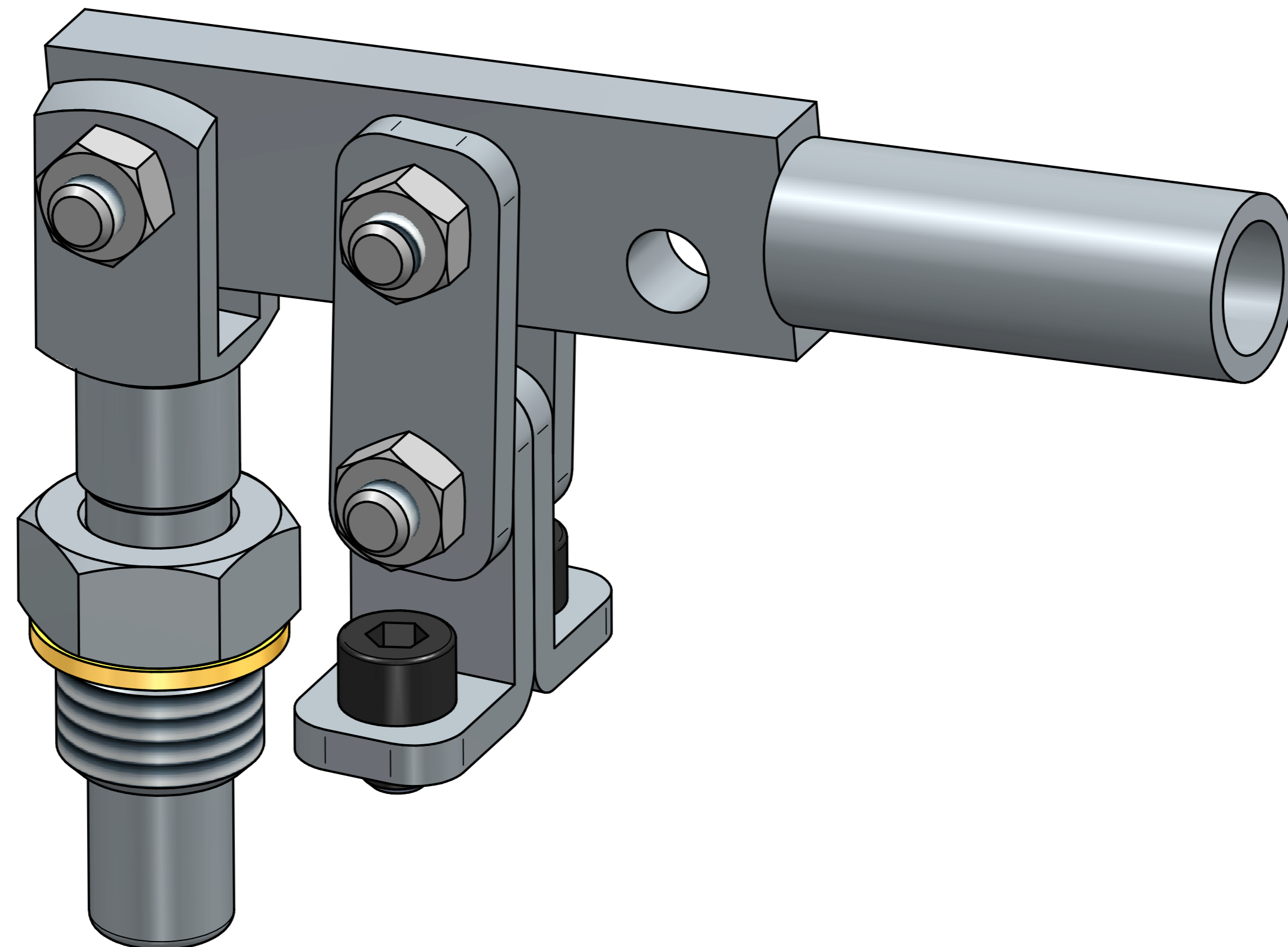
	NAME	DATE	<b>PREMAC</b>		
DRAWN	Dan	07/05/24			
APPROVED					
MATERIAL					
TREATMENT			TITLE Hand Pump Parts		
UNLESS OTHERWISE SPECIFIED DIMENSIONS ARE IN MILLIMETERS			SIZE A4	DWG NO	REV
1 <sup>ST</sup> ANGLE ANGLES ±0.1°			FILE NAME: Hand Pump Parts.dft		
2 PL ±0.02 3 PL ±0.005			SCALE:	WEIGHT:	SHEET 1 OF 12

REVISION HISTORY			
REV	DESCRIPTION	DATE	APPROVED

Item Number	Title	Document Number	Quantity	Item Number	Title	Document Number	Quantity
	Hand Pump			27*	Cap Screw	M8-10	2
1*	Fitting SAE6-BSP 1/4		1	28*	Bolt	M8-30	3
2*	Hand Pump Body		1	29*	Polly U Seal	PU 16-22-5	1
3*	Plug BSP1/4		1	30*	Relief Valve		1
38*			2	31*	Dome Nut		1
4*	Accumulator Release Valve		1	32*	Relief Valve Houding		1
5*	Accumulator Release Housing		1	33*	Copper Washer	D10	1
6*	Ball Seat		1	34*	O-Ring	2-113	1
7*	Knob		1	35*	Steel Ball	Dia 6	1
8*	Release Screw		1	36*	Grub Screw	M10-20	1
9*	Copper Washer	D12	1	37*	Relief Spring	00	1
10*	Lock Nut	M10-1	1	13*	Steel Ball	Dia 9	1
11*	O-Ring	2-114	1	17*	Spring	00	1
12*	O-Ring	3.5 x 5	1				
13*	Steel Ball	Dia 9	1				
14*	Check Valve		1				
6*	Ball Seat		1				
15*	Check Valve Housing		1				
16*	Fitting SAE4-BSP 1/4		1				
9*	Copper Washer	D12	1				
11*	O-Ring	2-114	1				
13*	Steel Ball	Dia 9	1				
17*	Spring	00	1				
18*	Plunger		1				
19*	Clevis		1				
20*	Handle		1				
21*	Handle Bracket		2				
22*	Link		2				
23*	Plunger Guide		1				
24*	Plunger Rod		1				
25*	DW G1 2		1				
26*	Nut	M8	3				

	NAME	DATE	<b>PREMAC</b>		
DRAWN	Dan	07/05/24			
APPROVED			TITLE Hand Pump Parts		
MATERIAL					
TREATMENT			SIZE A4	DWG NO	REV
UNLESS OTHERWISE SPECIFIED DIMENSIONS ARE IN MILLIMETERS			FILE NAME: Hand Pump Parts.dft		
1st ANGLE  2 PL ±0.02 3 PL ±0.005			SCALE:	WEIGHT:	SHEET 2 OF 12

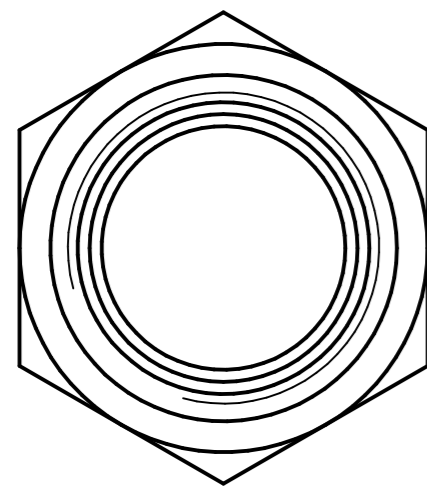
REVISION HISTORY			
REV	DESCRIPTION	DATE	APPROVED



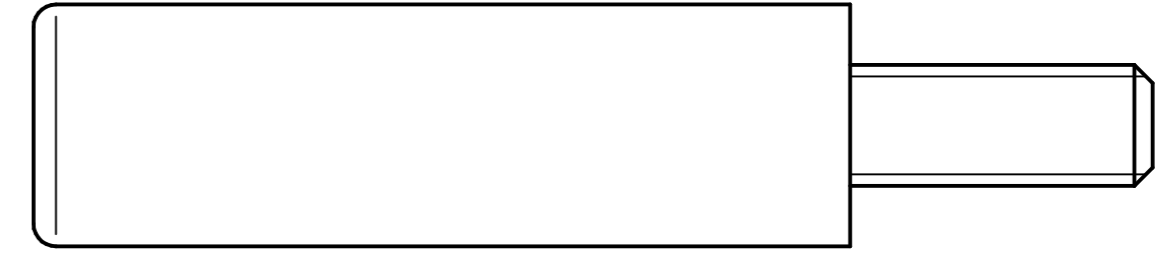
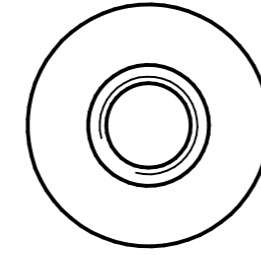
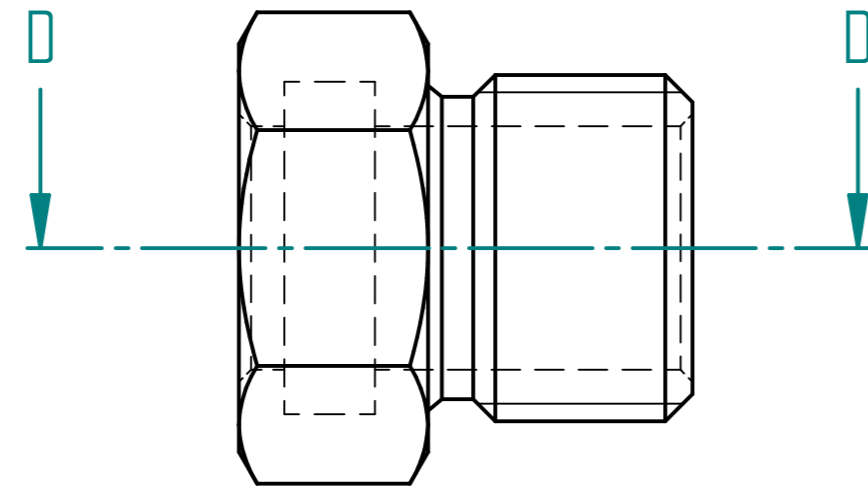
Plunger

	NAME	DATE	<b>PREMAC</b>		
DRAWN	Dan	07/05/24			
APPROVED			TITLE Hand Pump Parts		
MATERIAL					
TREATMENT			SIZE A4	DWG NO	REV
UNLESS OTHERWISE SPECIFIED DIMENSIONS ARE IN MILLIMETERS ANGLES ±0.1°			FILE NAME: Hand Pump Parts.dft		
1st ANGLE 2 PL ±0.02 3 PL ±0.005			SCALE:	WEIGHT:	SHEET 3 OF 12

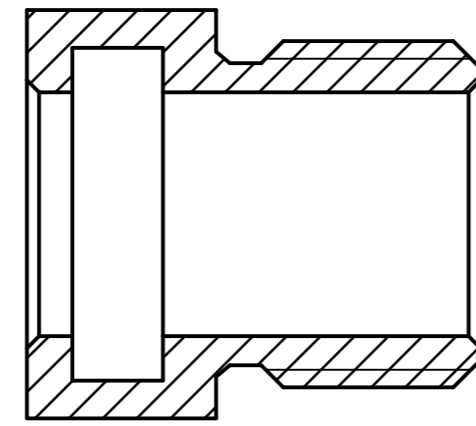
REVISION HISTORY			
REV	DESCRIPTION	DATE	APPROVED



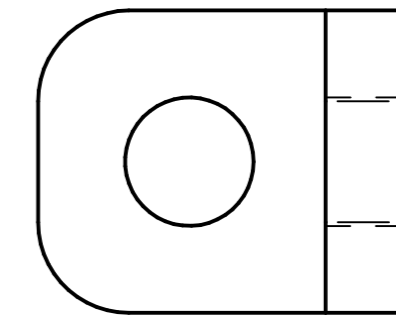
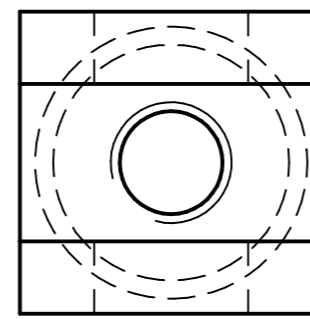
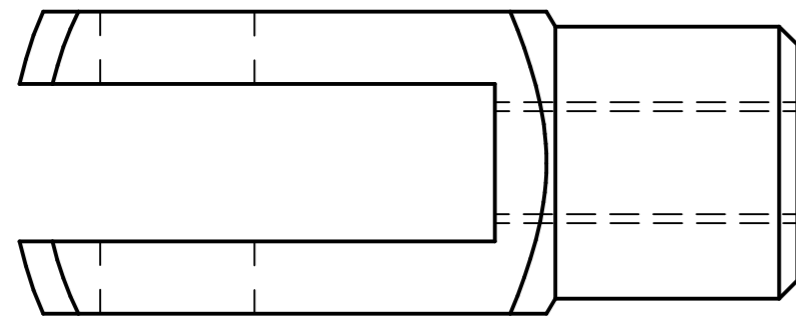
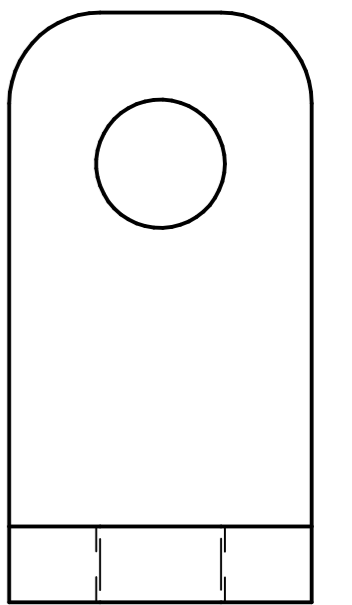
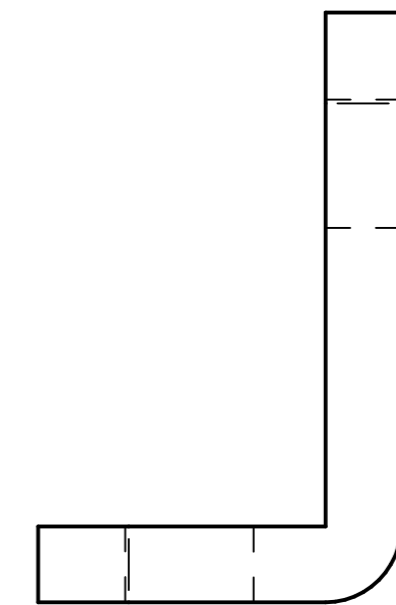
Plunger Guide



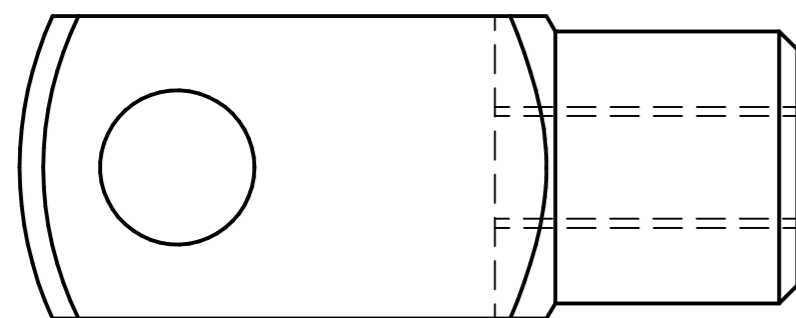
Plunger Rod



SECTION D-D



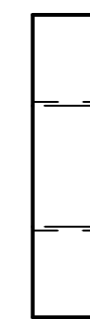
Handle Bracket 2 of



Clevis

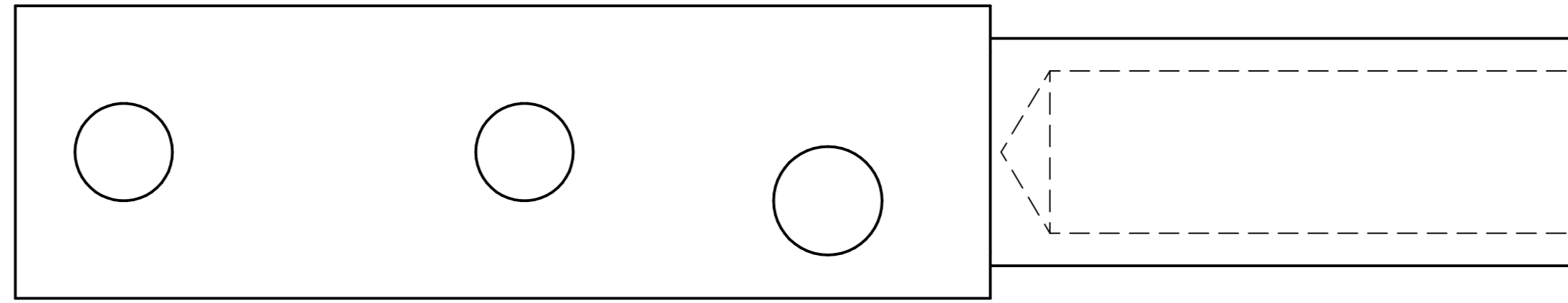
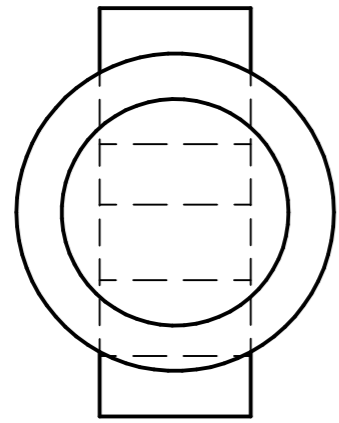


Link 2 of

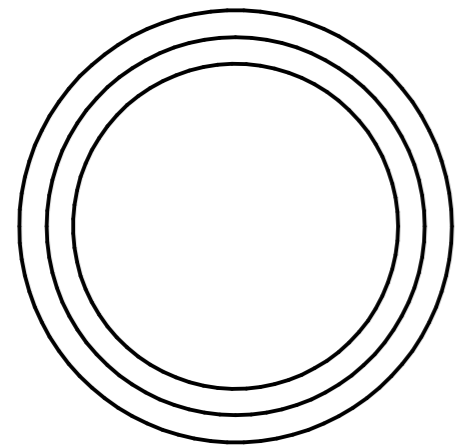
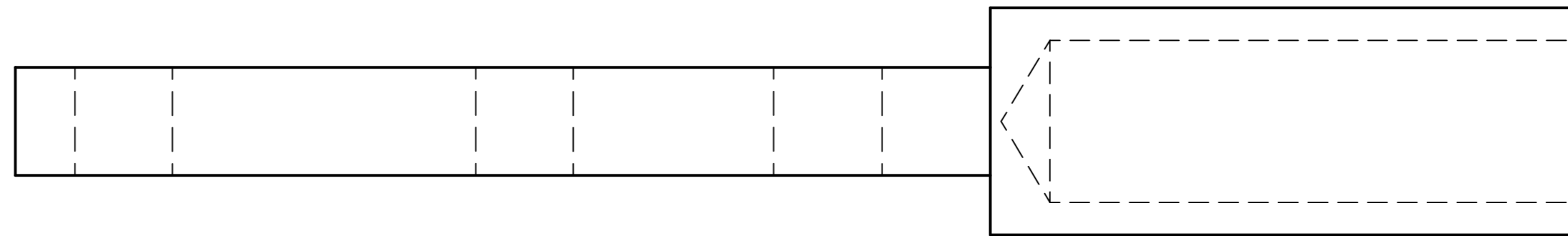


DRAWN	NAME	DATE	<b>PREMAC</b>	
APPROVED	Dan	07/05/24		
MATERIAL			TITLE	
TREATMENT			Hand Pump Parts	
UNLESS OTHERWISE SPECIFIED DIMENSIONS ARE IN MILLIMETERS			SIZE	DWG NO
ANGLES ±0.1°			A4	REV
1st ANGLE 2 PL ±0.02 3 PL ±0.005			FILE NAME: Hand Pump Parts.dft	
SCALE:		WEIGHT:	SHEET 4 OF 12	

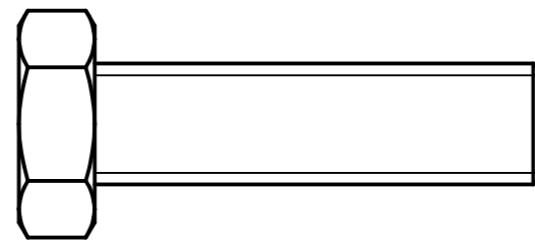
REVISION HISTORY			
REV	DESCRIPTION	DATE	APPROVED



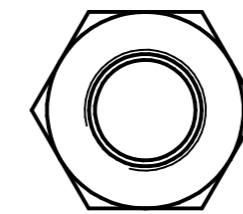
Handle



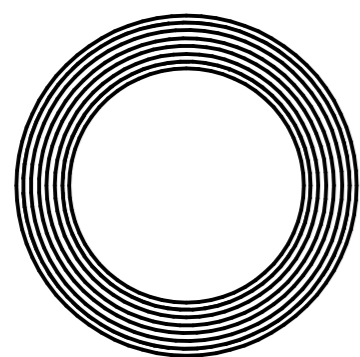
DW G1 2



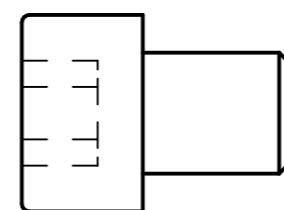
Bolt 3 of



Nut M8 3 of



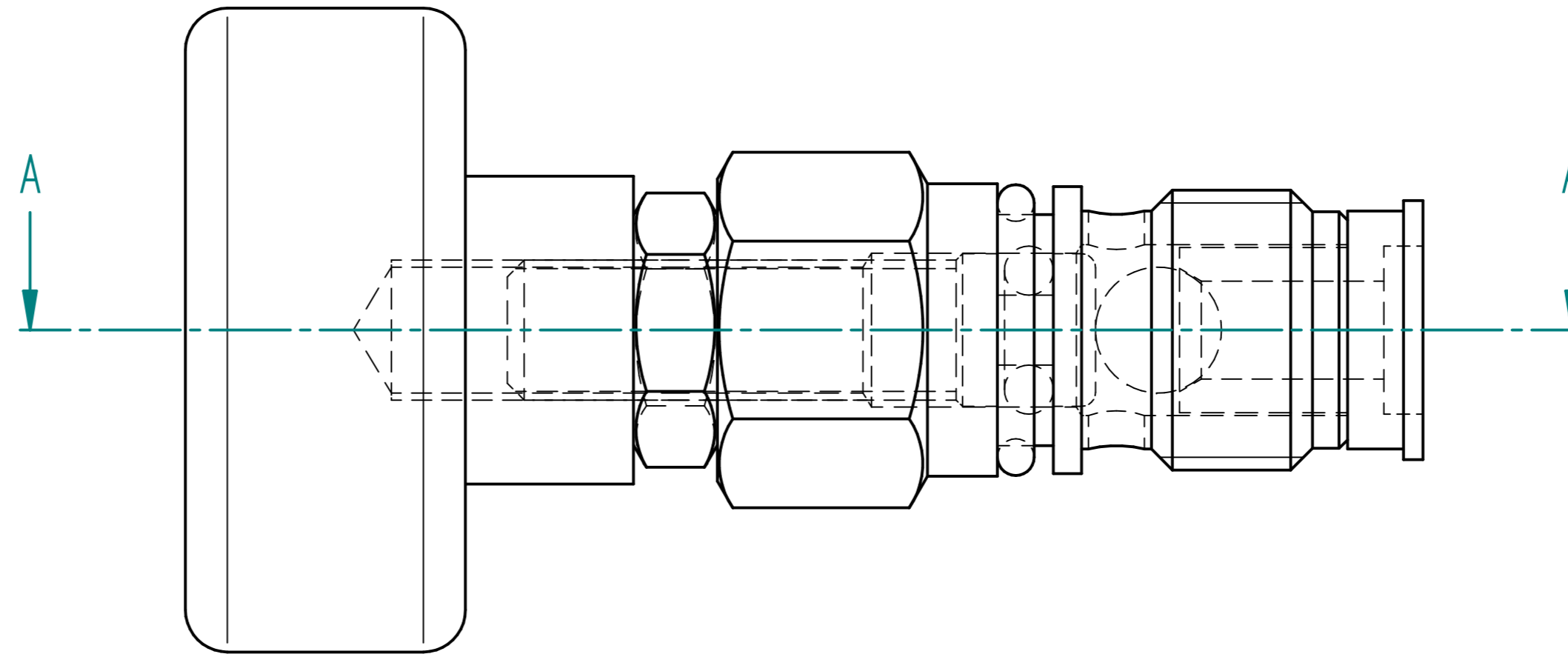
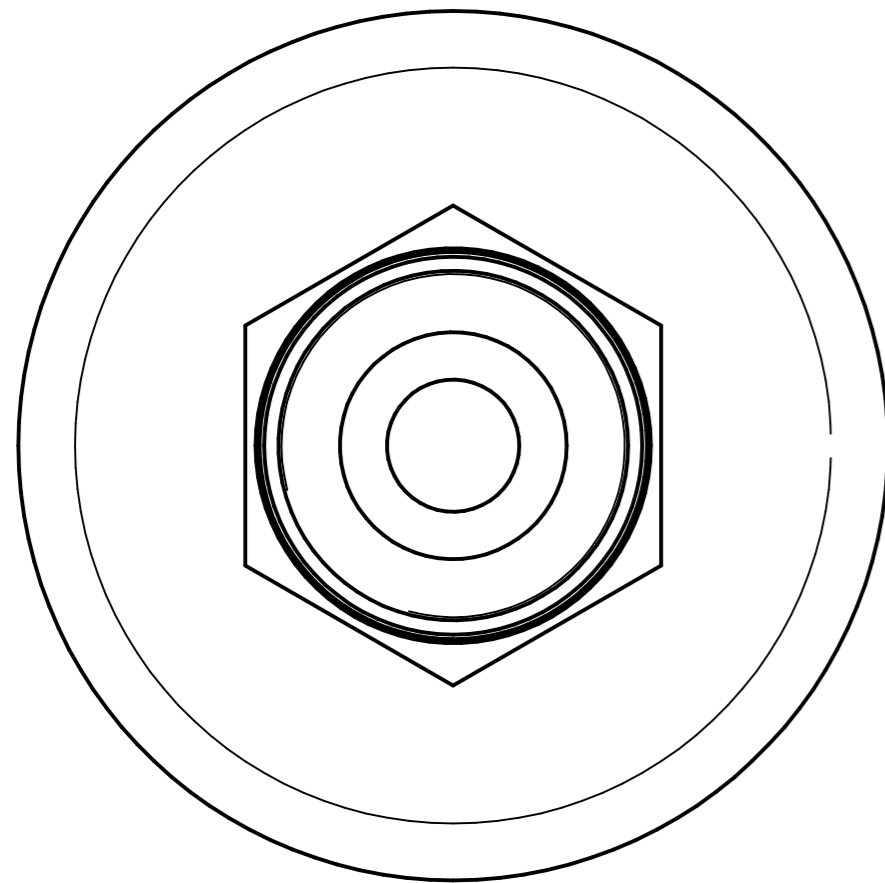
Polly U Seal PU 16-22-5



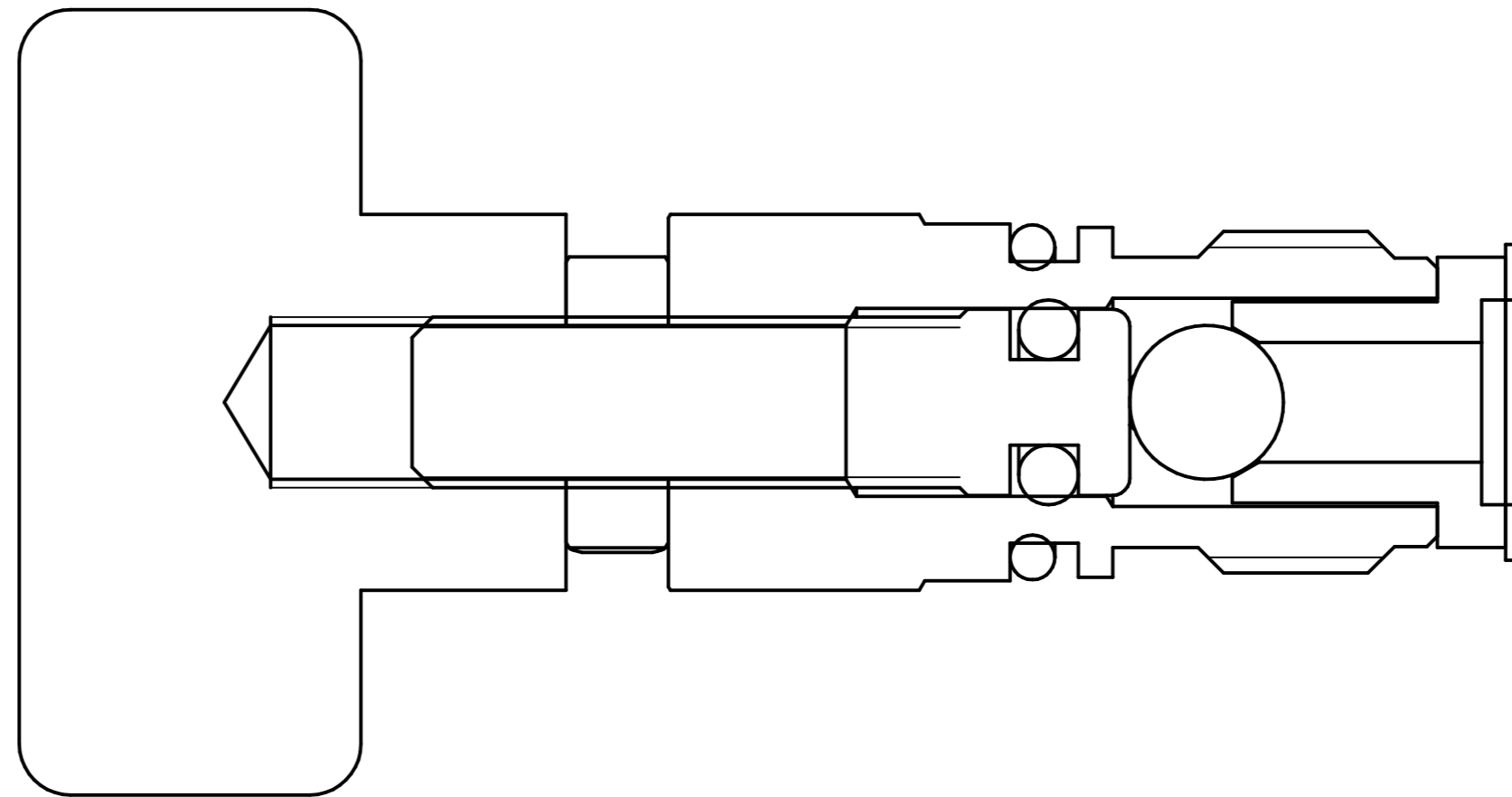
Cap Screw M8-10 2 of

	NAME	DATE	<b>PREMAC</b>	
DRAWN	Dan	07/05/24		
APPROVED			TITLE	
MATERIAL			Hand Pump Parts	
TREATMENT			SIZE	DWG NO
UNLESS OTHERWISE SPECIFIED DIMENSIONS ARE IN MILLIMETERS			A4	
ANGLES ±0.1°			FILE NAME: Hand Pump Parts.dft	
2 PL ±0.02 3 PL ±0.005			SCALE:	WEIGHT:
			SHEET 5 OF 12	

REVISION HISTORY			
REV	DESCRIPTION	DATE	APPROVED



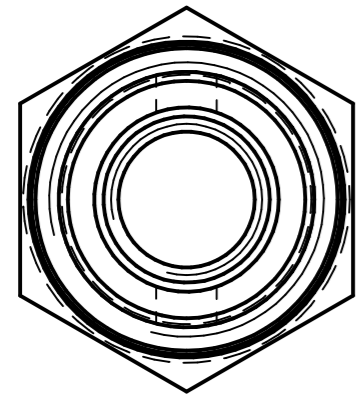
Accumulator Release Valve



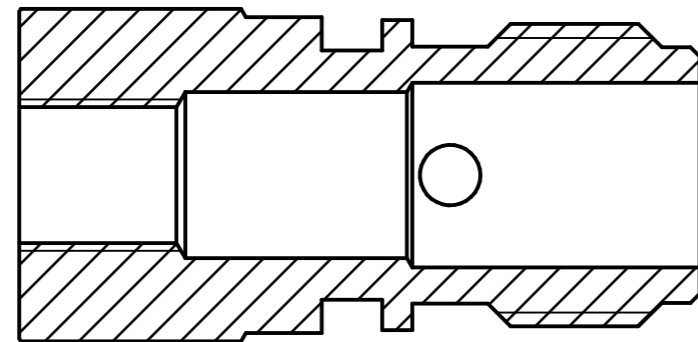
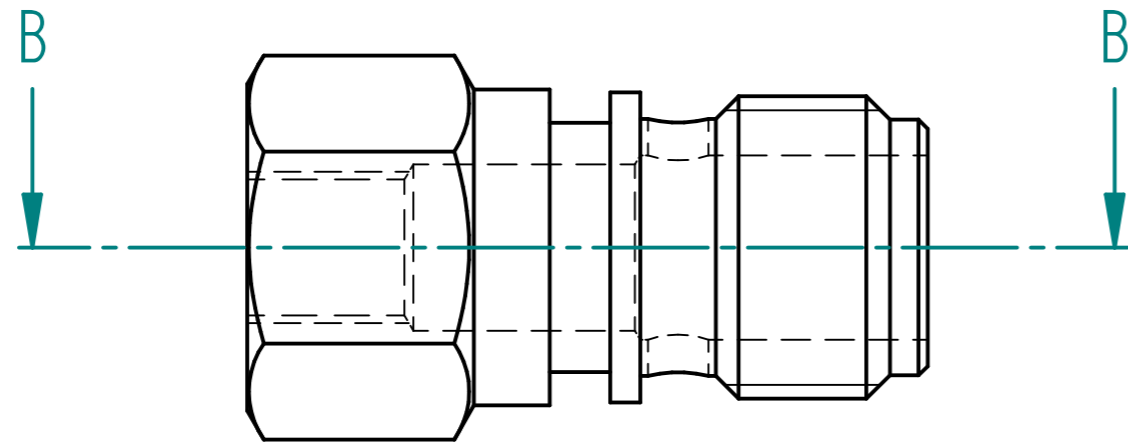
SECTION A-A

	NAME	DATE	<b>PREMAC</b>		
DRAWN	Dan	07/05/24			
APPROVED			TITLE Hand Pump Parts		
MATERIAL					
TREATMENT			SIZE A4	DWG NO	REV
UNLESS OTHERWISE SPECIFIED DIMENSIONS ARE IN MILLIMETERS			FILE NAME: Hand Pump Parts.dft		
1st ANGLE ANGLES ±0.1°			SCALE:	WEIGHT:	SHEET 6 OF 12
2 PL ±0.02 3 PL ±0.005					

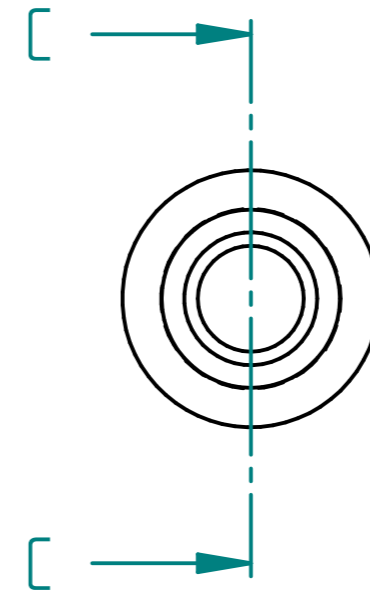
REVISION HISTORY			
REV	DESCRIPTION	DATE	APPROVED



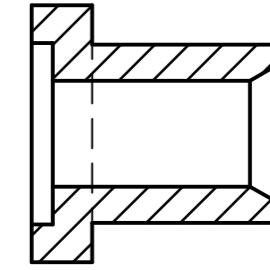
Accumulator Release Housing



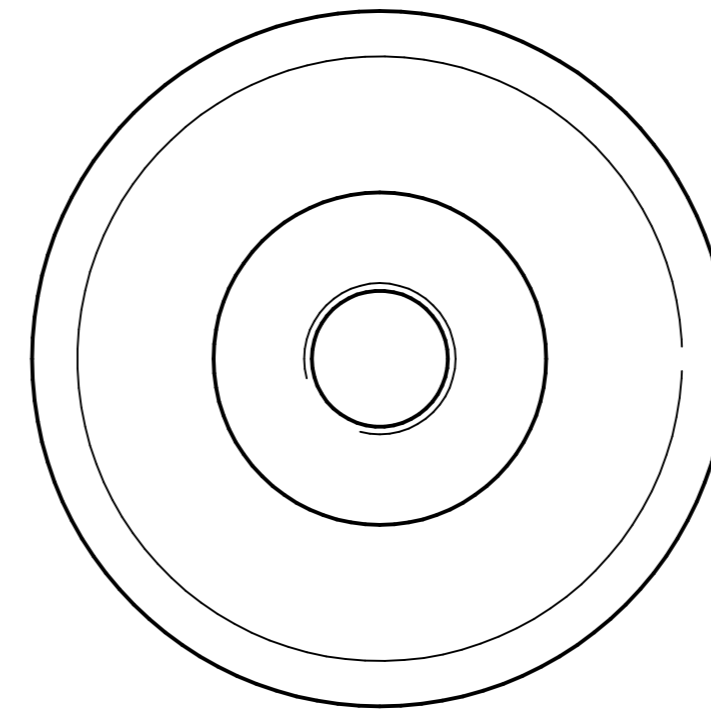
SECTION B-B



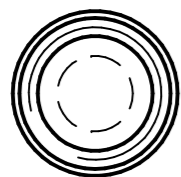
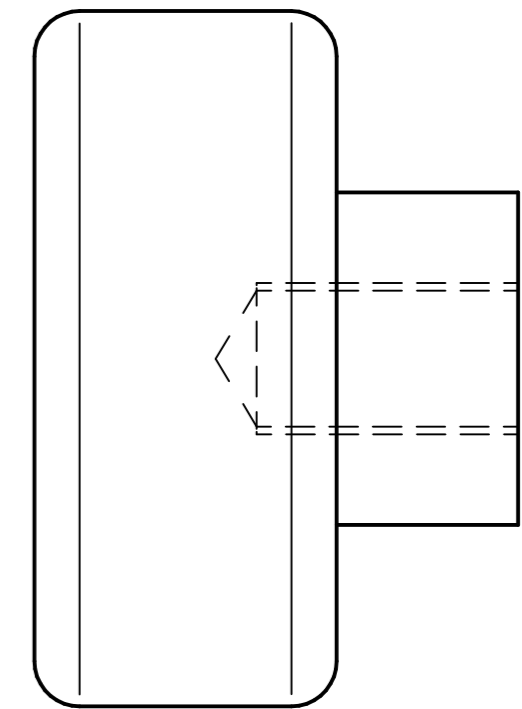
Ball Seat



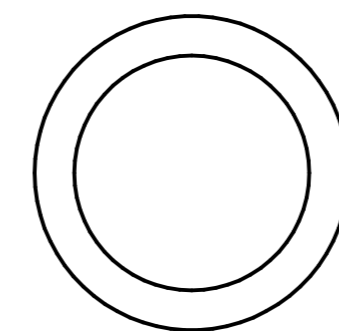
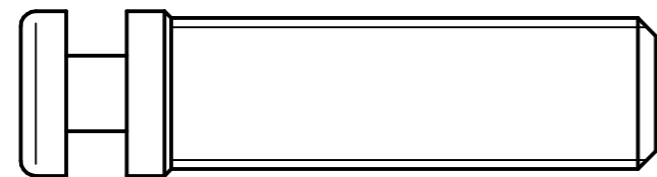
SECTION C-C



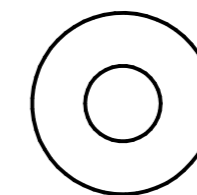
Knob



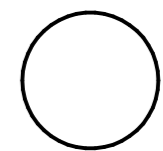
Release Screw



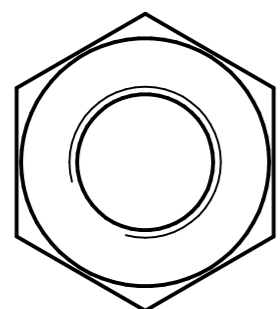
O-Ring 2-114



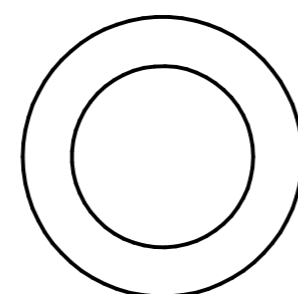
O-Ring 3.5 x 5



Steel Ball Dia 9



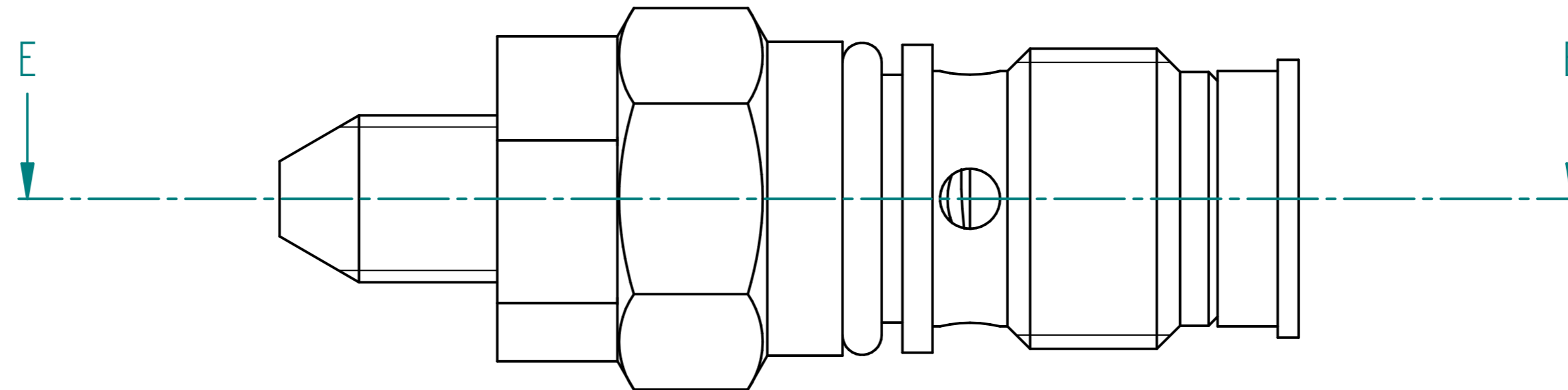
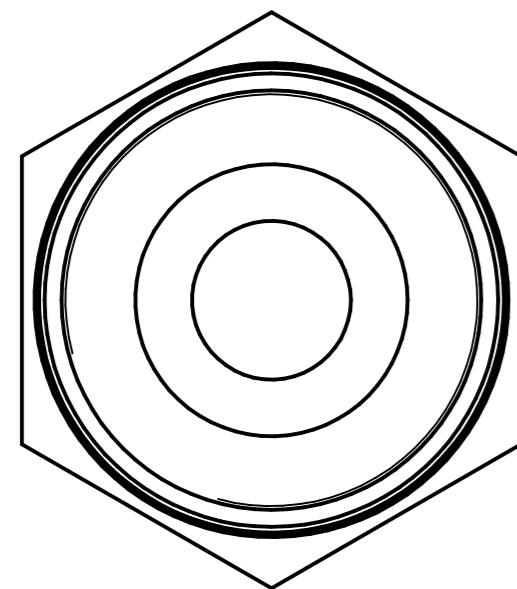
Lock Nut M10-1



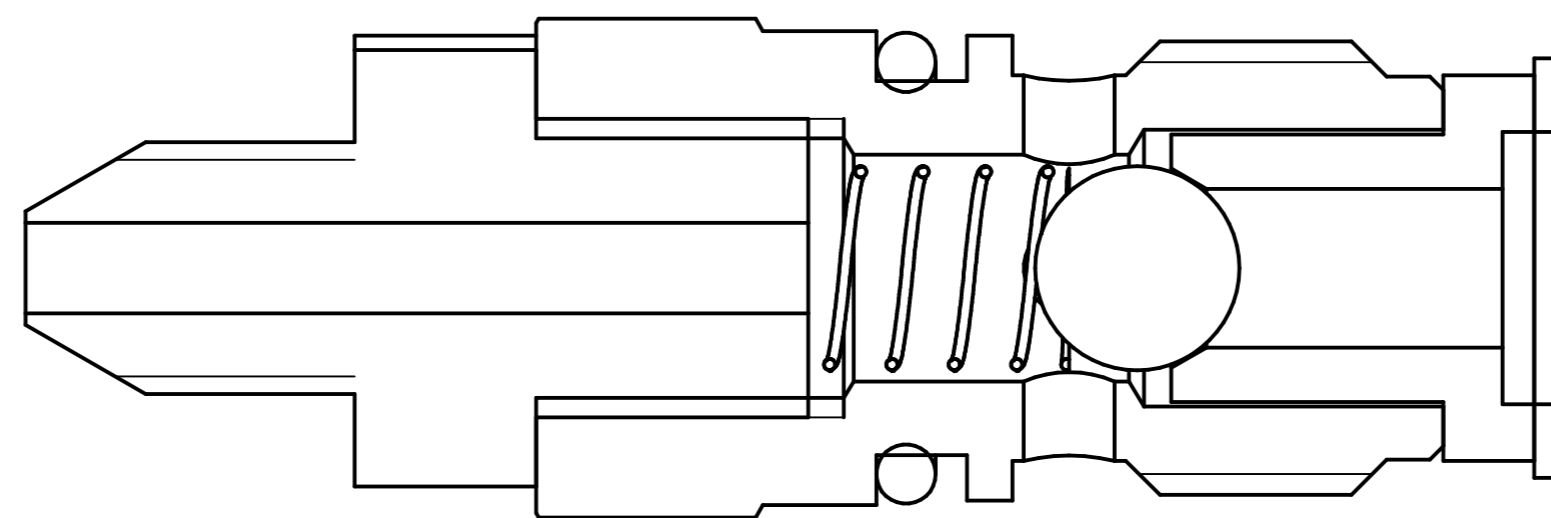
Copper Washer D12

	NAME	DATE	<b>PREMAC</b>	
DRAWN	Dan	07/05/24		
APPROVED			TITLE	
MATERIAL			Hand Pump Parts	
TREATMENT			SIZE	DWG NO
UNLESS OTHERWISE SPECIFIED DIMENSIONS ARE IN MILLIMETERS			A4	
ANGLES ±0.1°			FILE NAME: Hand Pump Parts.dft	REV
1st ANGLE 2 PL ±0.02 3 PL ±0.005			SCALE:	WEIGHT:
				SHEET 7 OF 12

REVISION HISTORY			
REV	DESCRIPTION	DATE	APPROVED



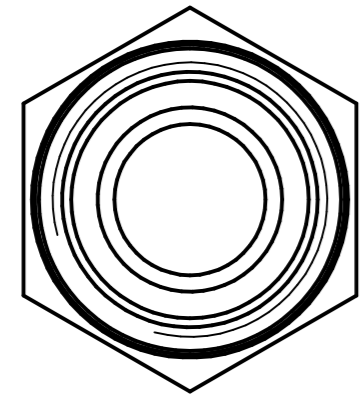
Check Valve



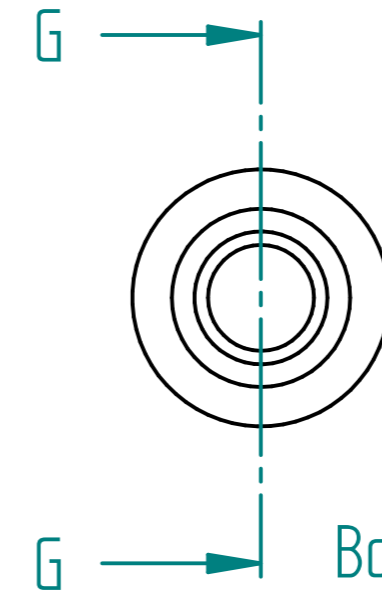
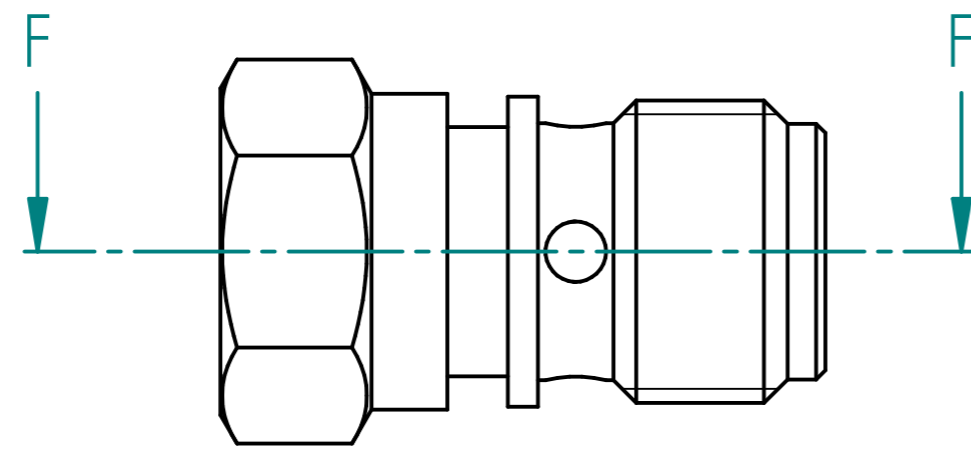
SECTION E-E

	NAME	DATE	<b>PREMAC</b>		
DRAWN	Dan	07/05/24			
APPROVED			TITLE Hand Pump Parts		
MATERIAL					
TREATMENT			SIZE A4	DWG NO	REV
UNLESS OTHERWISE SPECIFIED DIMENSIONS ARE IN MILLIMETERS			FILE NAME: Hand Pump Parts.dft		
1st ANGLE 2 PL ±0.02 3 PL ±0.005			SCALE:	WEIGHT:	SHEET 8 OF 12

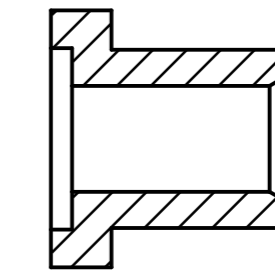
REVISION HISTORY			
REV	DESCRIPTION	DATE	APPROVED



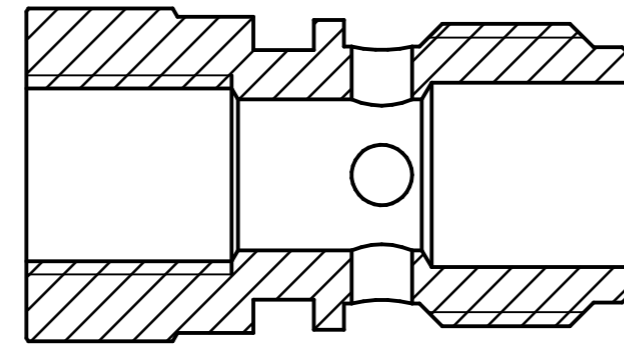
Check Valve Housing



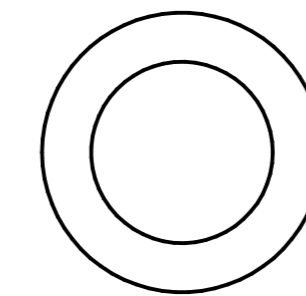
Ball Seat



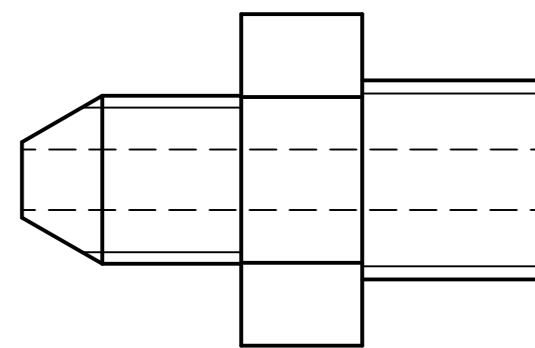
SECTION G-G



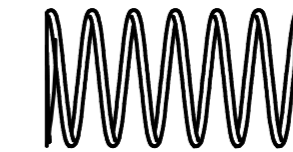
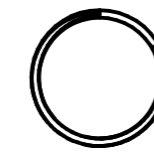
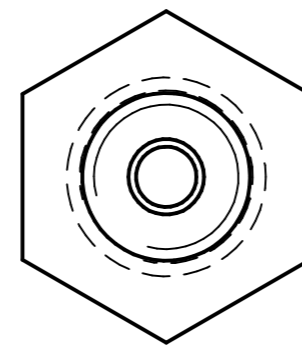
SECTION F-F



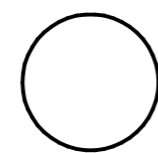
Copper Washer D12



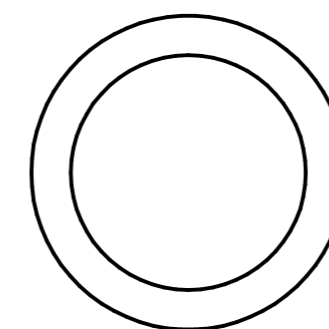
Fitting SAE4-BSP 1/4



Spring OD



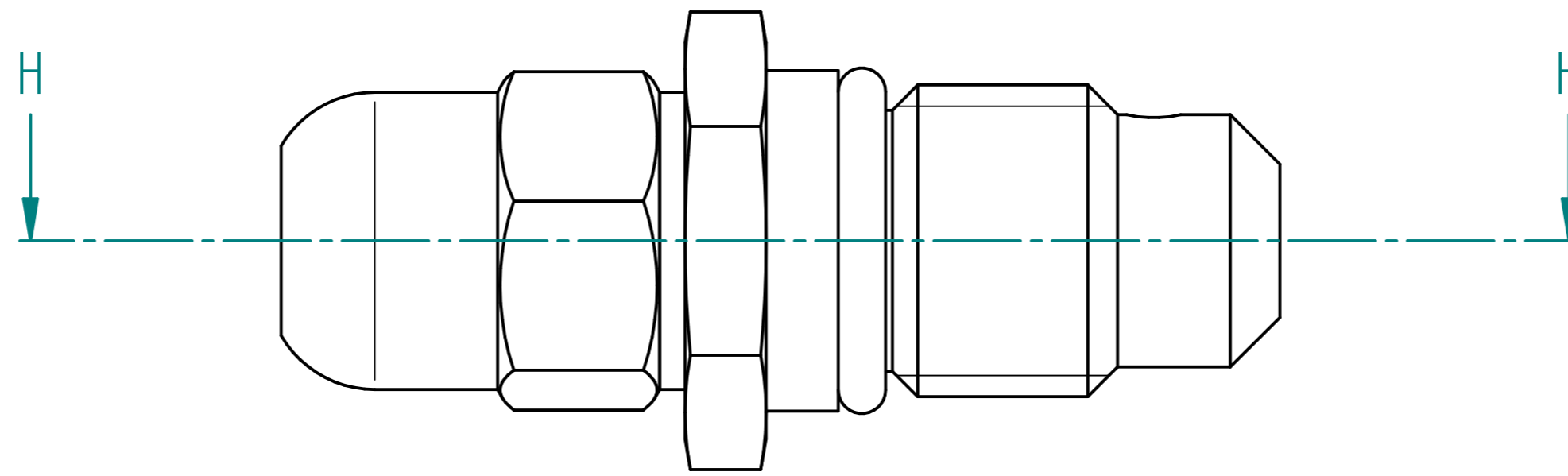
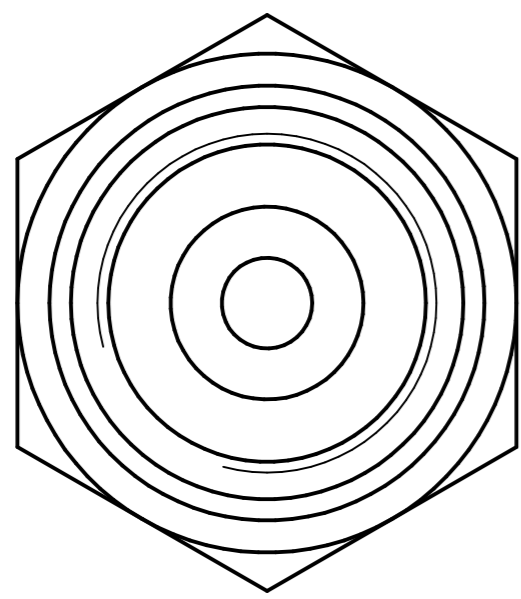
Steel Ball Dia 9



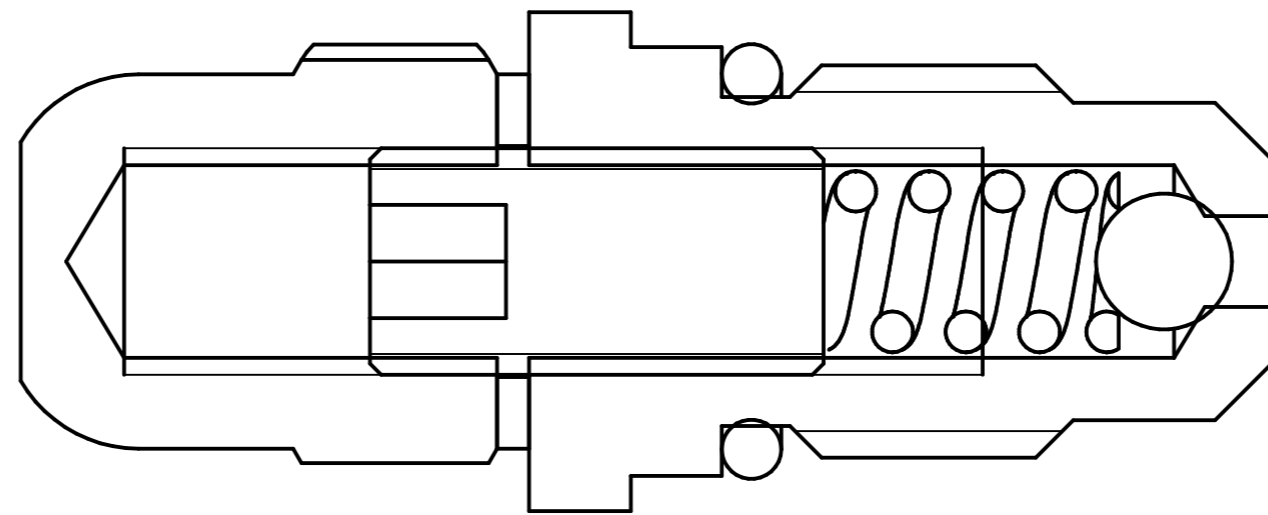
O-Ring 2-114

	NAME	DATE	<b>PREMAC</b>		
DRAWN	Dan	07/05/24			
APPROVED			TITLE Hand Pump Parts		
MATERIAL					
TREATMENT			SIZE A4	DWG NO	REV
UNLESS OTHERWISE SPECIFIED DIMENSIONS ARE IN MILLIMETERS ANGLES ±0.1°			FILE NAME: Hand Pump Parts.dft		
1st ANGLE 2 PL ±0.02 3 PL ±0.005			SCALE:	WEIGHT:	SHEET 9 OF 12

REVISION HISTORY			
REV	DESCRIPTION	DATE	APPROVED



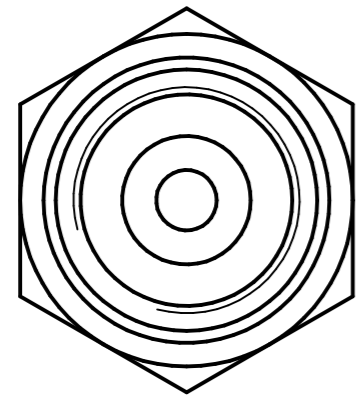
Relief Valve



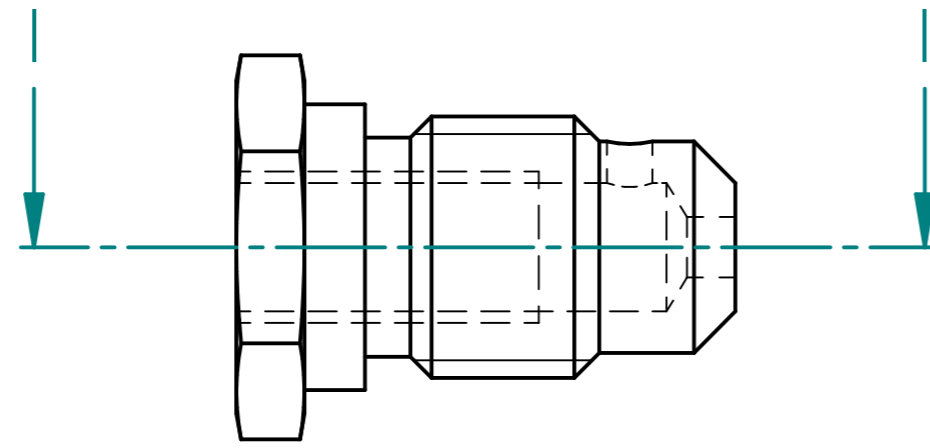
SECTION H-H

	NAME	DATE	<b>PREMAC</b>		
DRAWN	Dan	07/05/24			
APPROVED			TITLE Hand Pump Parts		
MATERIAL					
TREATMENT			SIZE A4	DWG NO	REV
UNLESS OTHERWISE SPECIFIED DIMENSIONS ARE IN MILLIMETERS ANGLES ±0.1°			FILE NAME: Hand Pump Parts.dft		
1st ANGLE 			SCALE:	WEIGHT:	SHEET 10 OF 12
2 PL ±0.02 3 PL ±0.005					

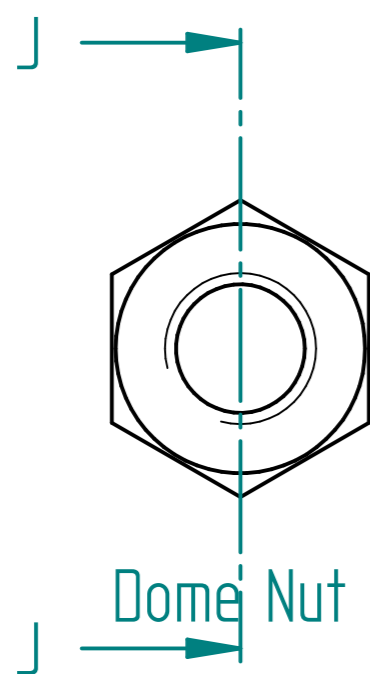
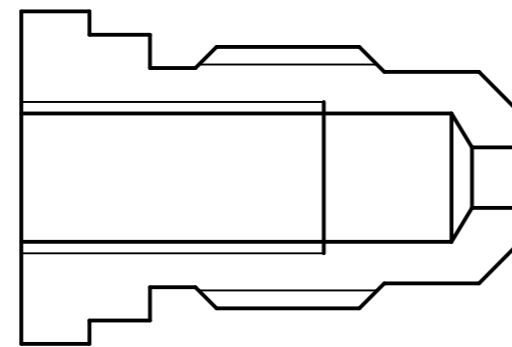
REVISION HISTORY			
REV	DESCRIPTION	DATE	APPROVED



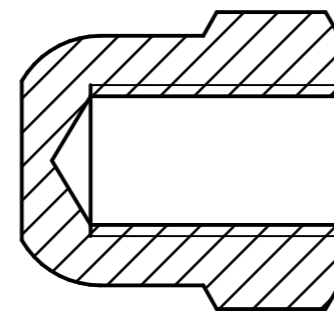
Relief Valve Housing



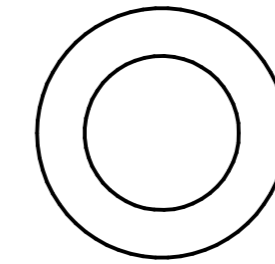
SECTION I-I



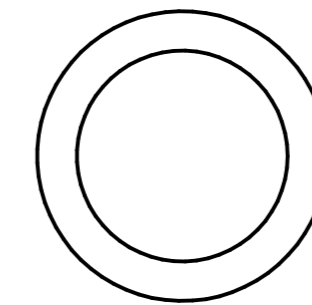
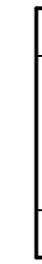
Dome Nut



SECTION J-J



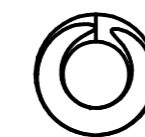
Copper Washer D10



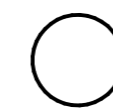
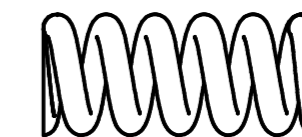
O-Ring 2-113



Grub Screw M10-20



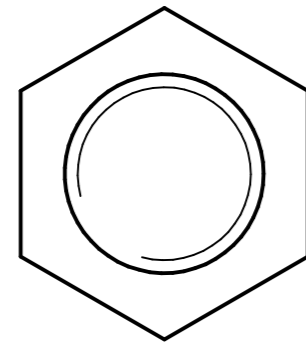
Relief Spring OD



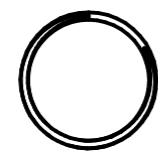
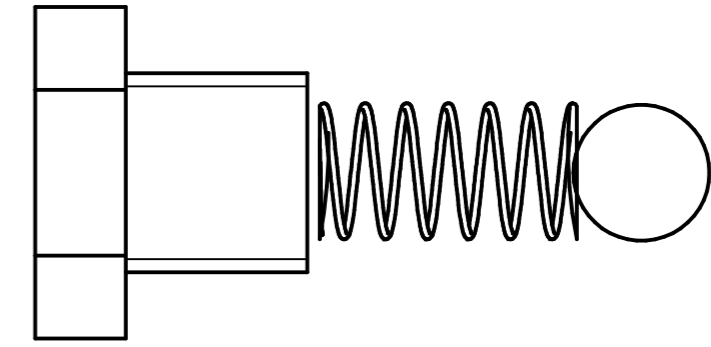
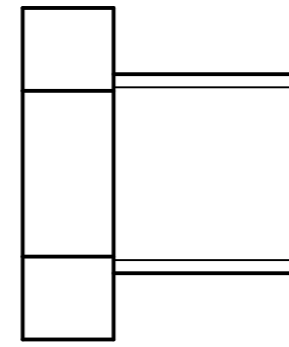
Steel Ball Dia 6

	NAME	DATE	<b>PREMAC</b>		
DRAWN	Dan	07/05/24			
APPROVED					
MATERIAL					
TREATMENT			TITLE Hand Pump Parts		
UNLESS OTHERWISE SPECIFIED DIMENSIONS ARE IN MILLIMETERS			SIZE A4	DWG NO	REV
1st ANGLE ANGLES ±0.1°			FILE NAME: Hand Pump Parts.dft		
2 PL ±0.02 3 PL ±0.005			SCALE:	WEIGHT:	SHEET 11 OF 12

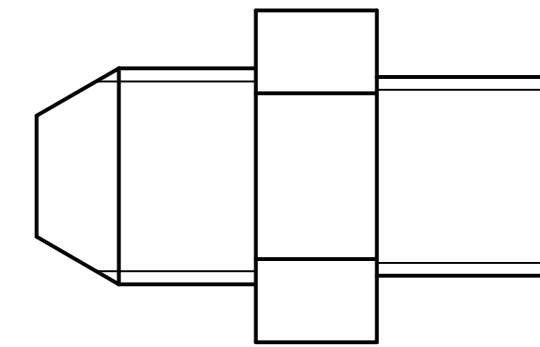
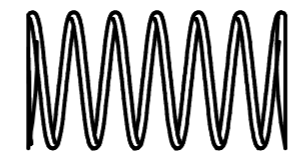
REVISION HISTORY			
REV	DESCRIPTION	DATE	APPROVED



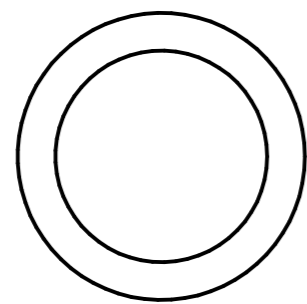
Plug BSP1/4



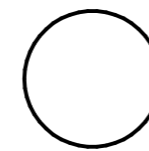
Spring OD



Fitting SAE6-BSP 1/4



Copper Washer D14



Steel Ball Dia 9

	NAME	DATE	<b>PREMAC</b>		
DRAWN	Dan	07/05/24			
APPROVED			TITLE Hand Pump Parts		
MATERIAL					
TREATMENT			SIZE A4	DWG NO	REV
UNLESS OTHERWISE SPECIFIED DIMENSIONS ARE IN MILLIMETERS			FILE NAME: Hand Pump Parts.dft		
1 <sup>ST</sup> ANGLE 2 PL ±0.02 3 PL ±0.005			SCALE:	WEIGHT:	SHEET 12 OF 12