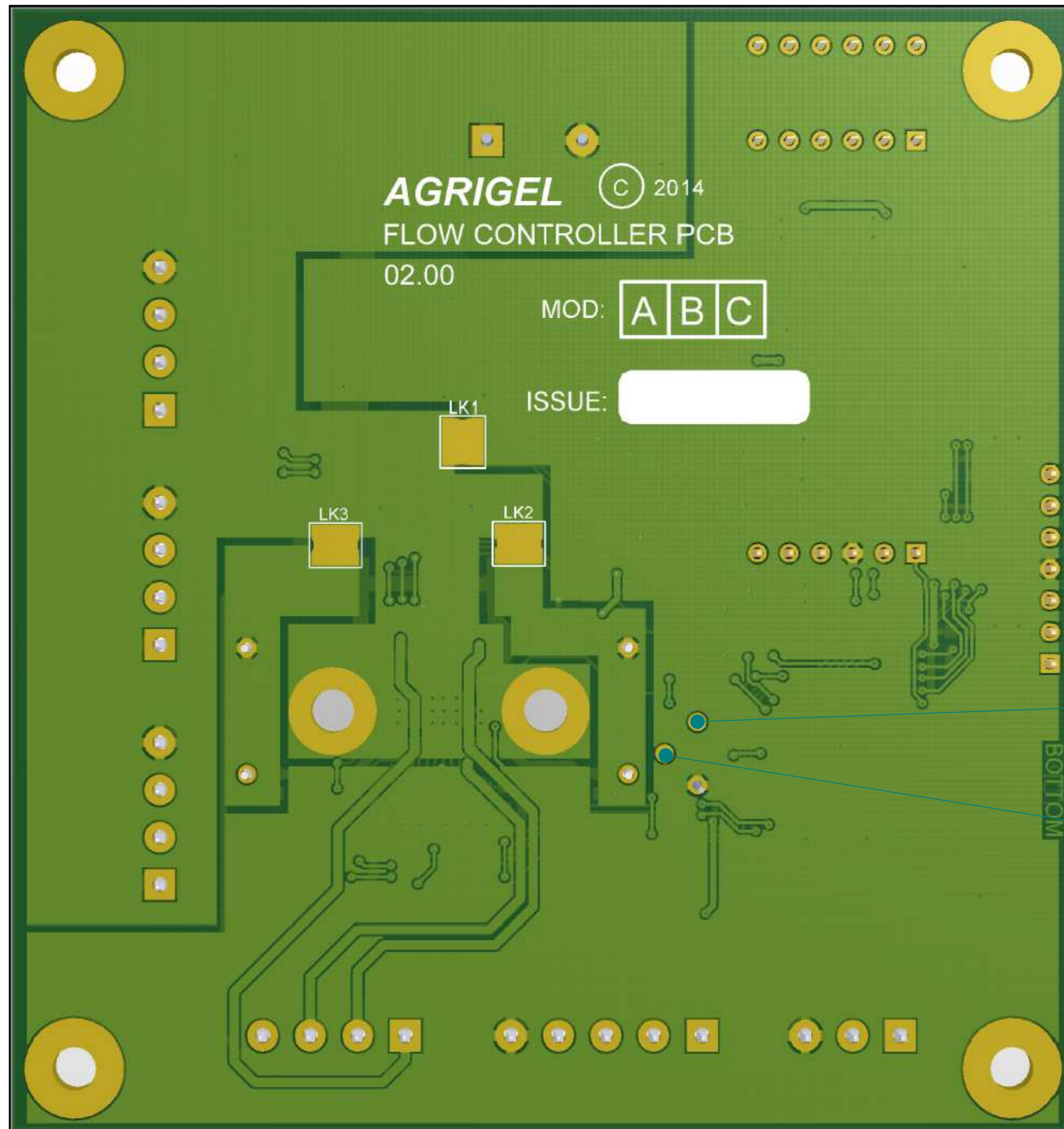


REVISION HISTORY			
REV	DESCRIPTION	DATE	APPROVED



A resistance of 2,45 K ohm must be measured between A and B. This is the POT setting

	NAME	DATE	AGRIGEL	
DRAWN	Dan	01/18/14		
APPROVED				
MATERIAL				
TREATMENT			TITLE	
UNLESS OTHERWISE SPECIFIED DIMENSIONS ARE IN MILLIMETERS			SIZE A4	DWG NO
1st ANGLE ANGLES ±0.1°			FILE NAME: Flow Control Board Box.dft	
2 PL ±0.02 3 PL ±0.005			SCALE:	WEIGHT:
			SHEET 4 OF 5	

REVISION HISTORY			
REV	DESCRIPTION	DATE	APPROVED

Dip Switches (row identification)

Programming Connector

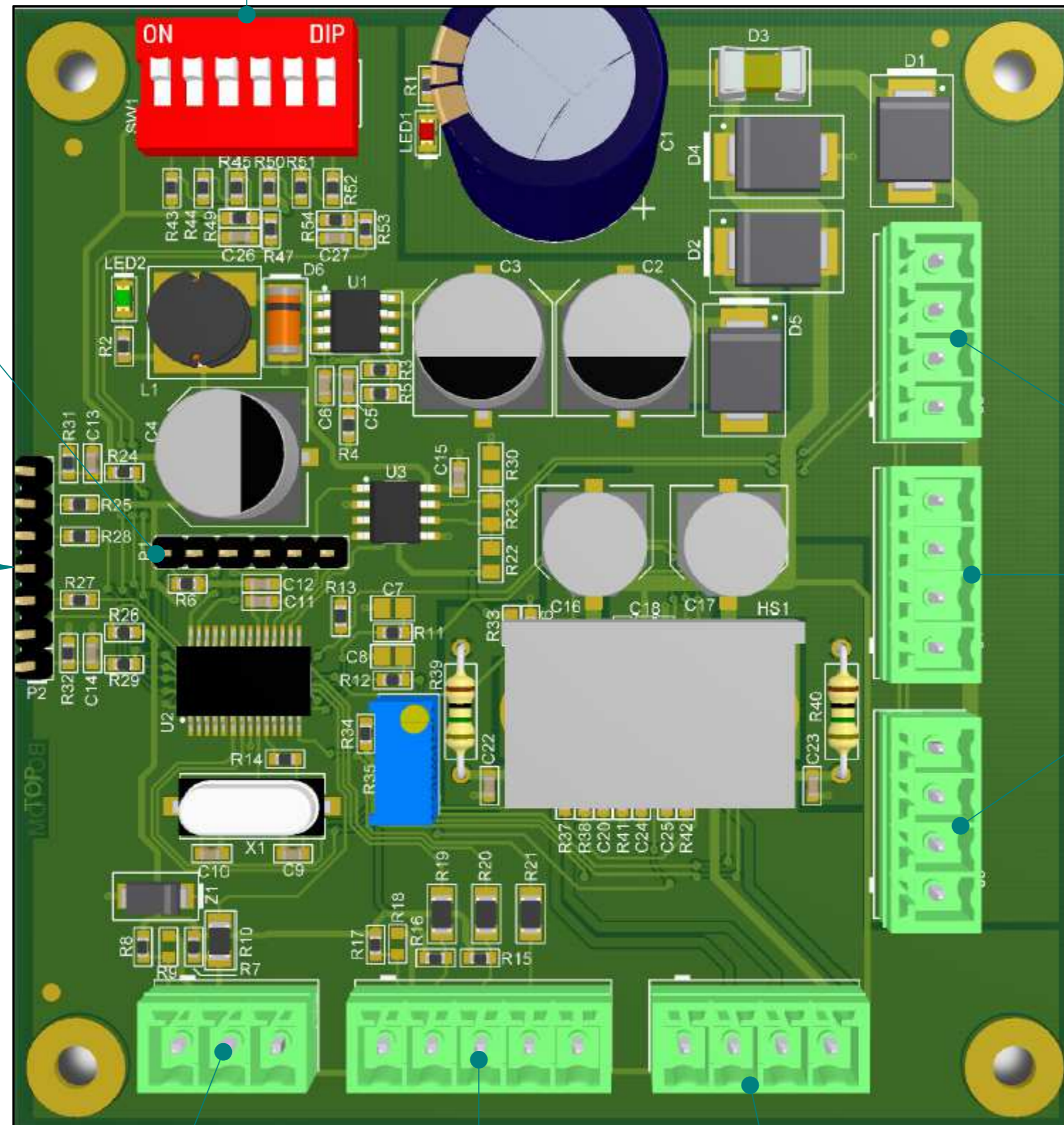
Key pad

Power and Comms connectors

Speed pick up

Ultrasonic Flow Meter Connection

Stepper Motor Connection



	NAME	DATE	AGRIGEL	
DRAWN	Dan	01/18/14		
APPROVED			TITLE	
MATERIAL				
TREATMENT				
UNLESS OTHERWISE SPECIFIED DIMENSIONS ARE IN MILLIMETERS			SIZE A4	DWG NO
1st ANGLE ANGLES ±0.1°			FILE NAME: Flow Control Board Box.dft	
2 PL ±0.02 3 PL ±0.005			SCALE:	WEIGHT:
			SHEET 5 OF 5	