

REVISION HISTORY			
REV	DESCRIPTION	DATE	APPROVED

Dip Switches (row identification)

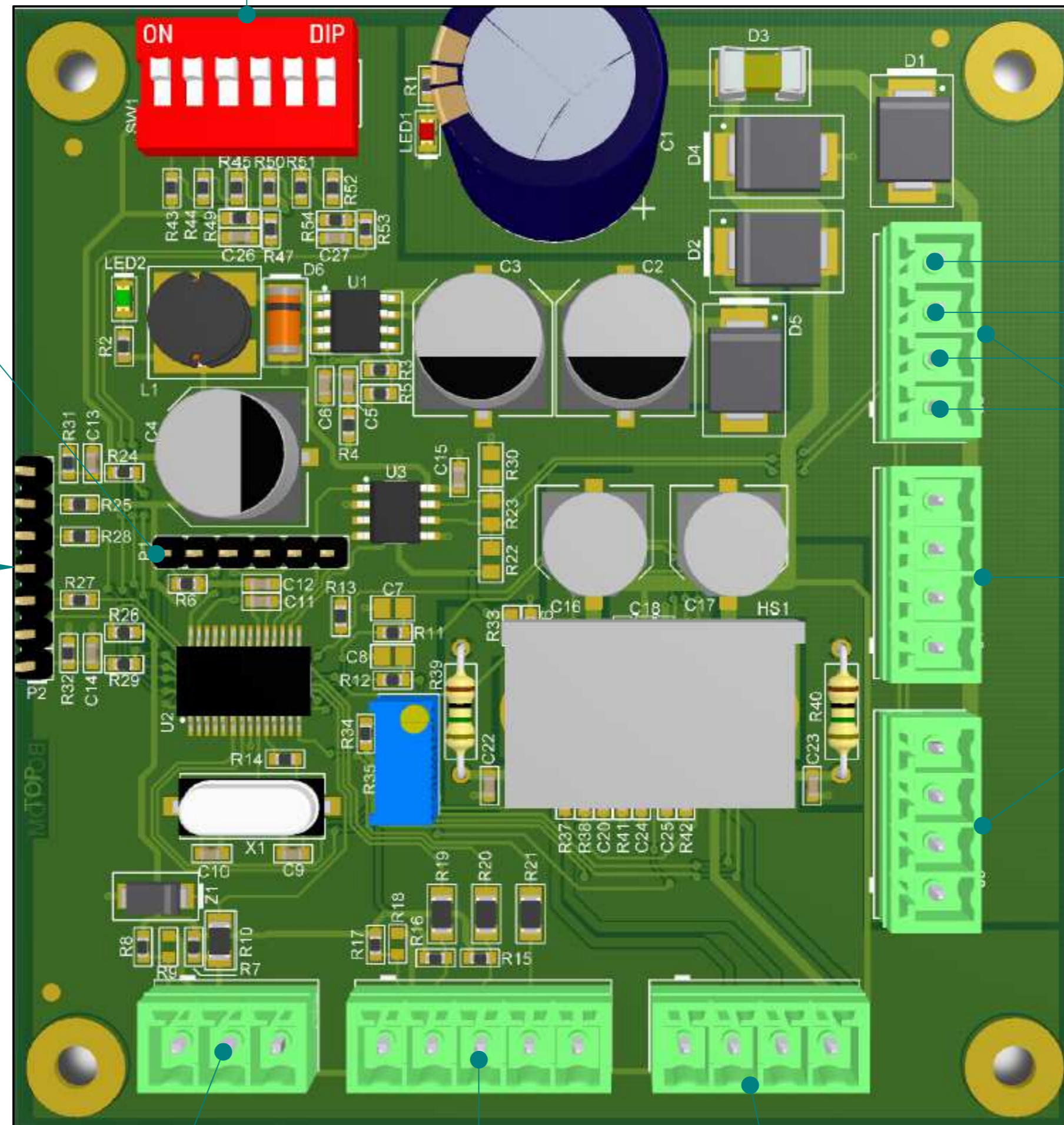
Programming Connector

Key pad

Speed pick up

Ultrasonic Flow Meter Connection

Stepper Motor Connection



Ground
Coms B
Coms A
+12 Volts

Power and Comms connectors. All 3 are the same and are interconnected and are used to jump from one board to the next.

	NAME	DATE	AGRIGEL	
DRAWN	Dan	01/18/14		
APPROVED			TITLE	
MATERIAL				
TREATMENT				
UNLESS OTHERWISE SPECIFIED DIMENSIONS ARE IN MILLIMETERS			SIZE A4	DWG NO
1st ANGLE ANGLES ±0.1°			FILE NAME: Flow Control Board Box.dft	
2 PL ±0.02 3 PL ±0.005			SCALE:	WEIGHT:
			SHEET 5 OF 5	