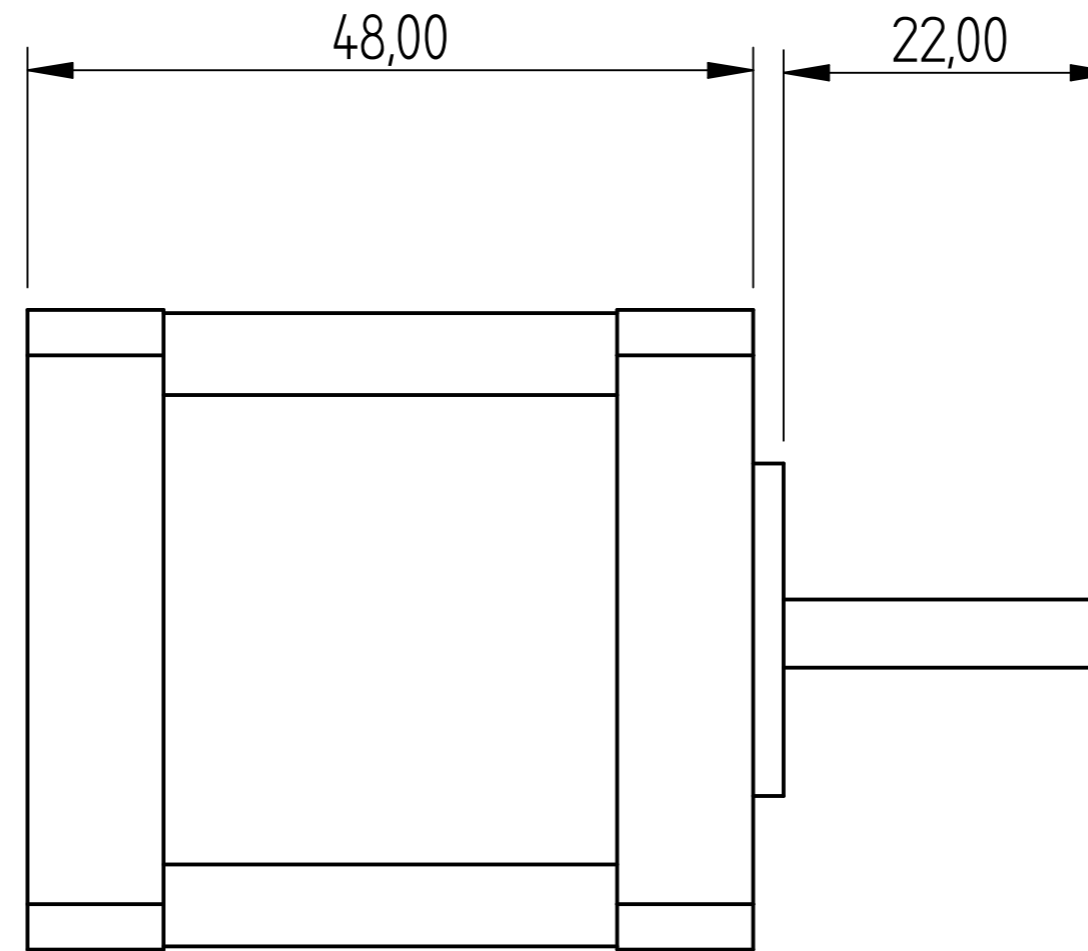
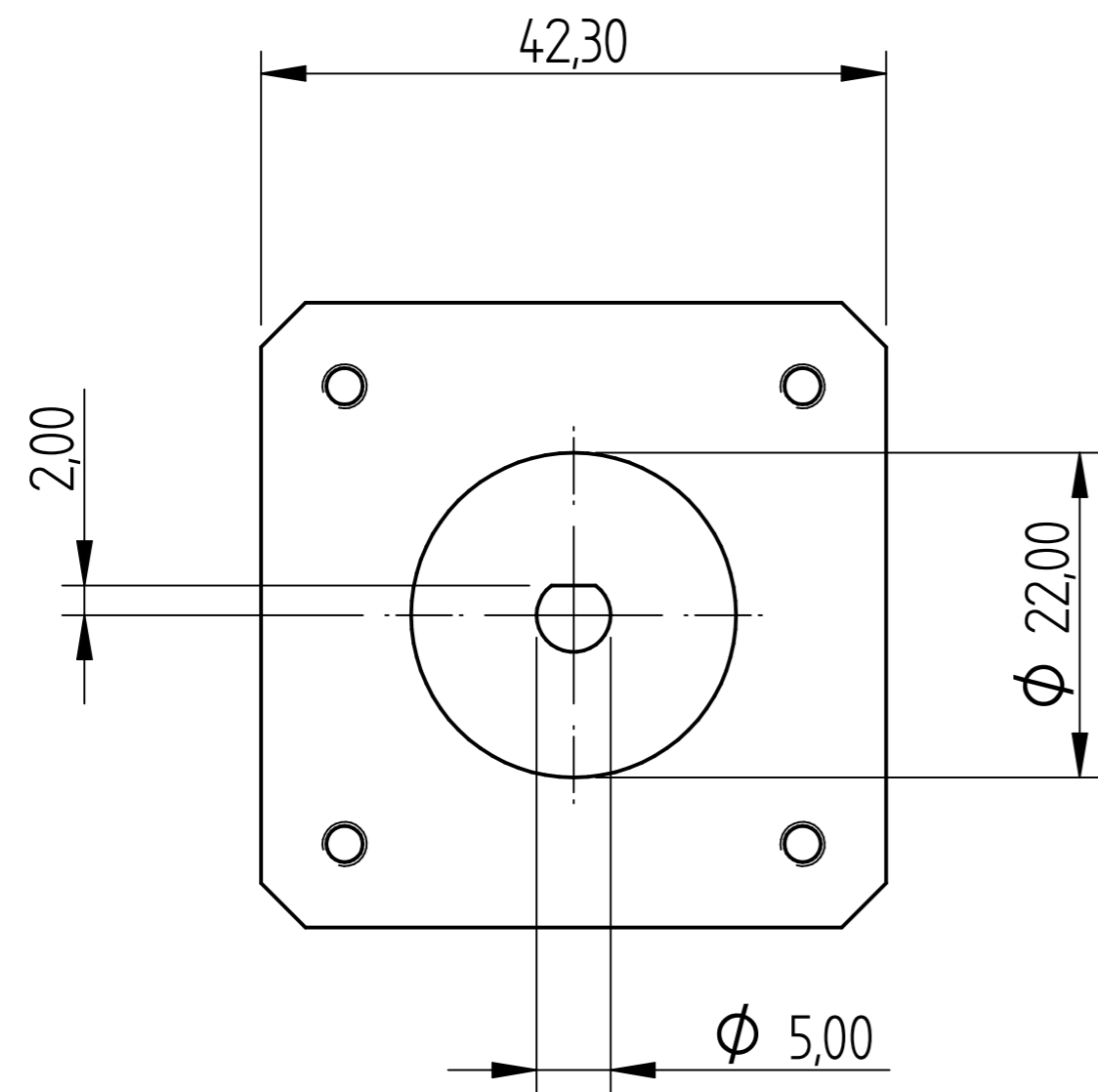
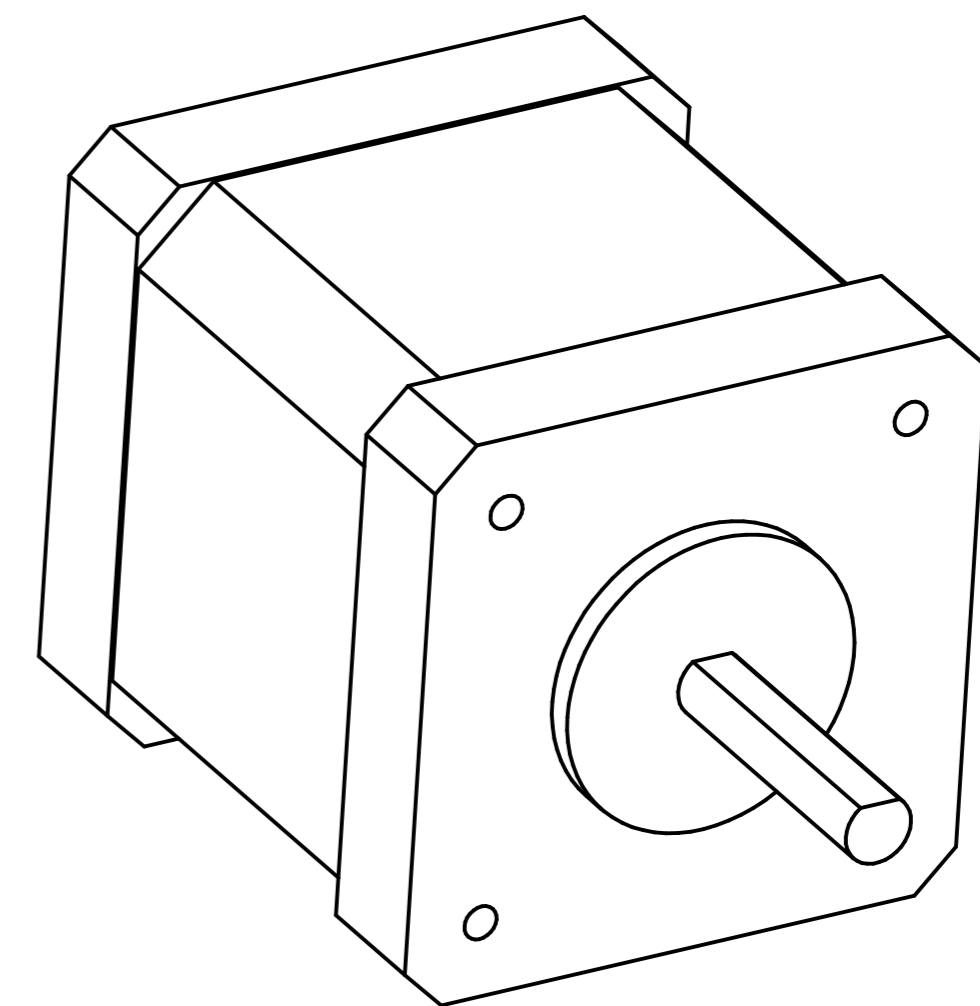


REVISION HISTORY			
REV	DESCRIPTION	DATE	APPROVED



Stepper Motor 17HS8402



NOTE: SHAFT DIA 5mm BY 22mm LONG WITH 0.5mm REMOVED TO CREATE A FLAT AS PER DRAWING

	NAME	DATE	<b>AGRIGEL</b>	
DRAWN	DG	08/20/14		
APPROVED				
MATERIAL				
TREATMENT			TITLE	
UNLESS OTHERWISE SPECIFIED DIMENSIONS ARE IN MILLIMETERS			SIZE	DWG NO
ANGLES ±0.1°			A4	SM 17HS8402
2 PL ±0.02 3 PL ±0.005			FILE NAME: Stepper Motor 17HS8402.dft	REV
			SCALE:	WEIGHT:
			SHEET 1 OF 1	