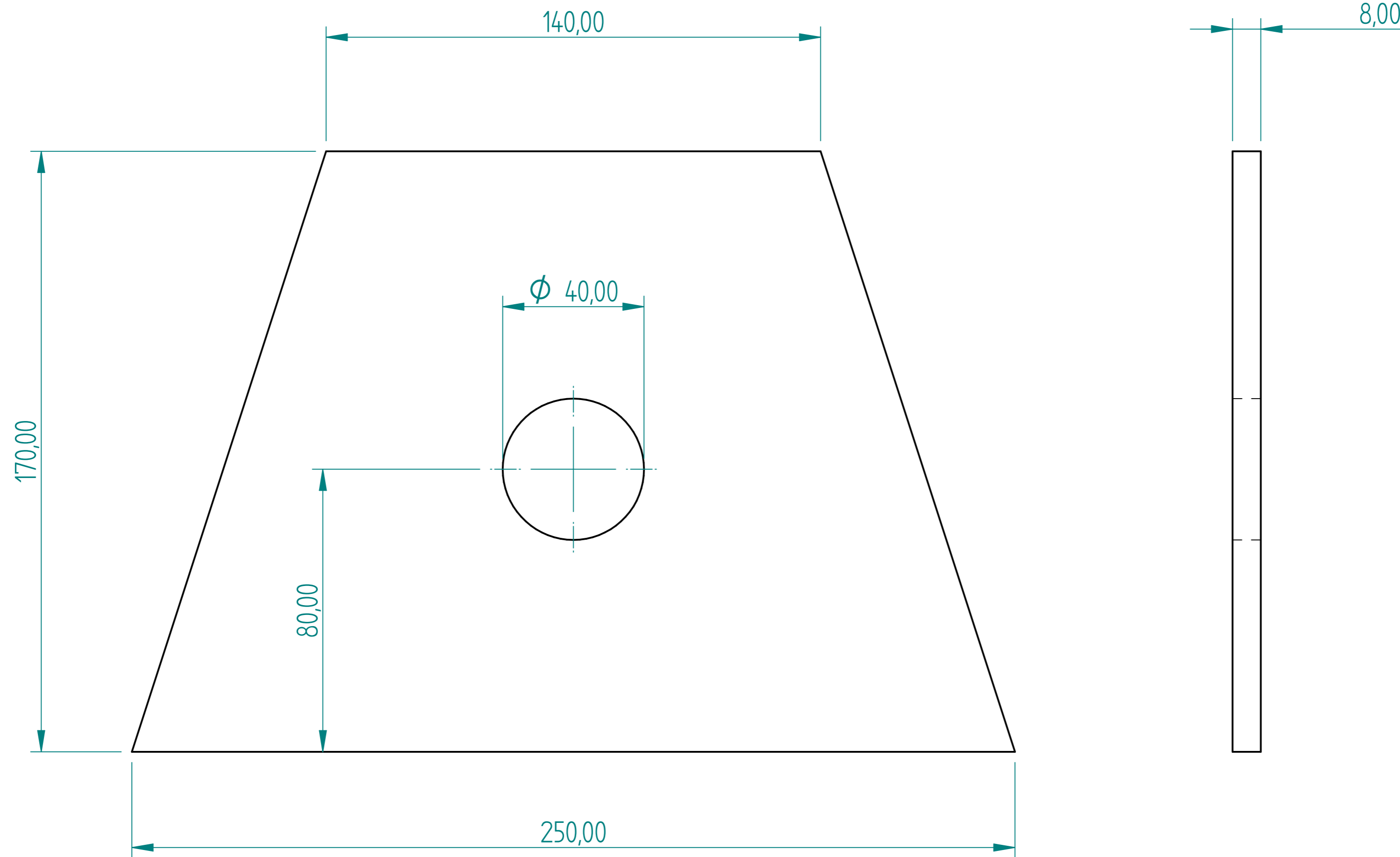


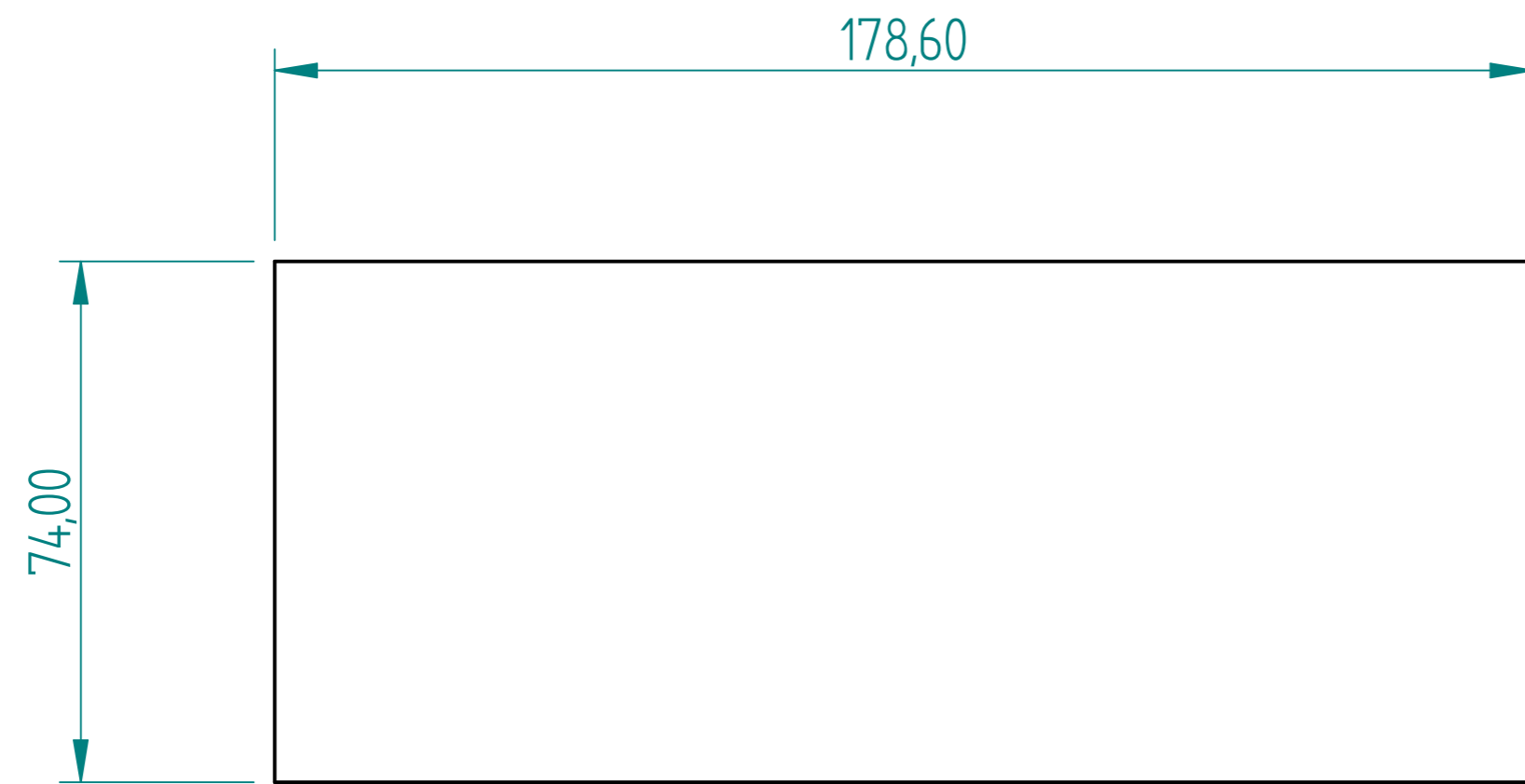
REVISION HISTORY			
REV	DESCRIPTION	DATE	APPROVED



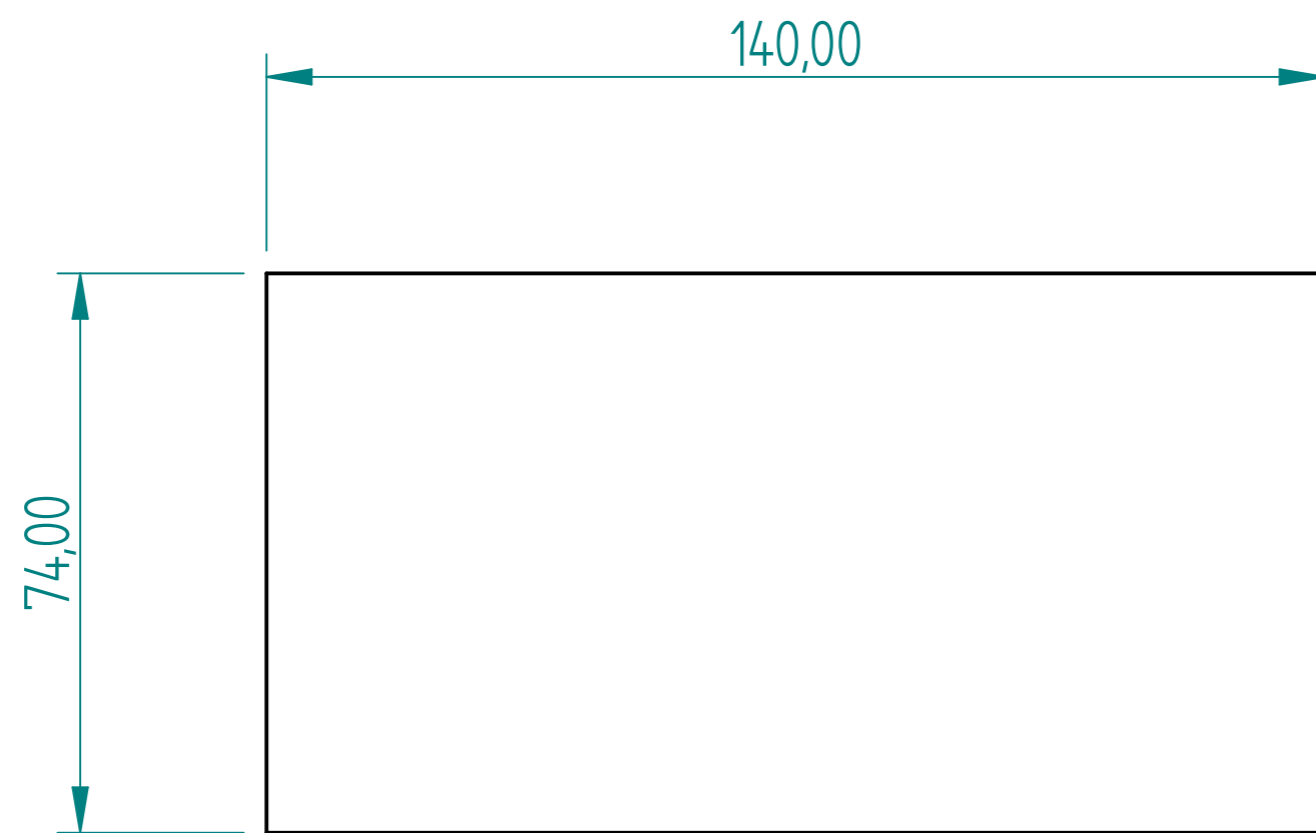
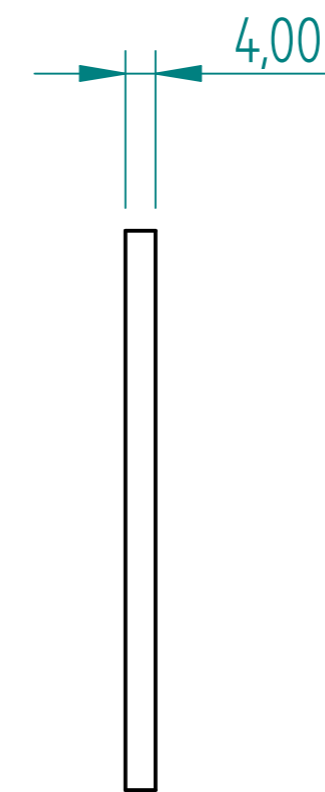
Back Plate 2 off

	NAME	DATE	PREMAC	
DRAWN	Dan	08/18/23		
APPROVED			TITLE	
MATERIAL				
TREATMENT				
UNLESS OTHERWISE SPECIFIED DIMENSIONS ARE IN MILLIMETERS ANGLES $\pm 0.1^\circ$			SIZE A4	DWG NO
1st ANGLE 			FILE NAME: Shot Wheel Plates.dft	
2 PL ± 0.02 3 PL ± 0.005			SCALE:	WEIGHT:
			SHEET 1 OF 10	

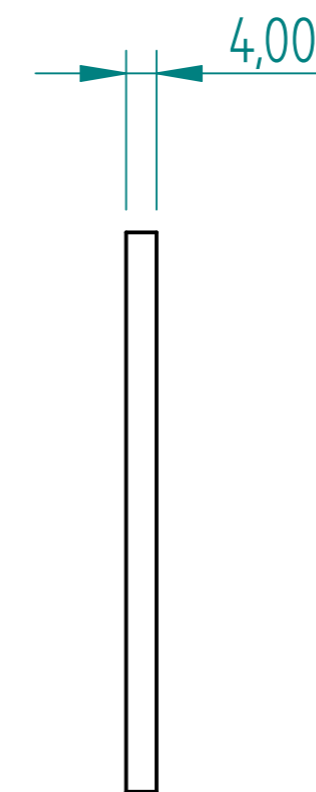
REVISION HISTORY			
REV	DESCRIPTION	DATE	APPROVED



Side Plate 2 off

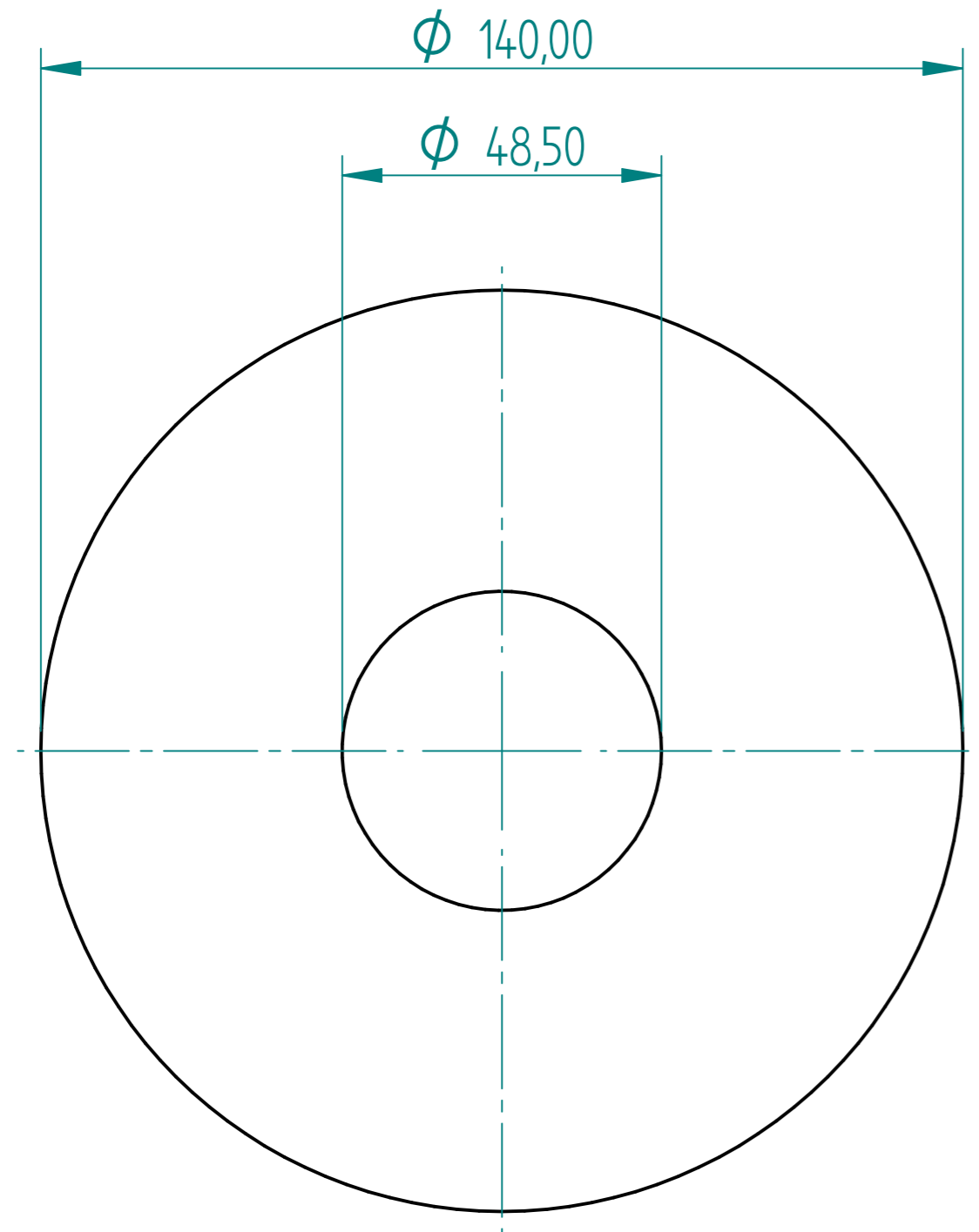


Top Plate

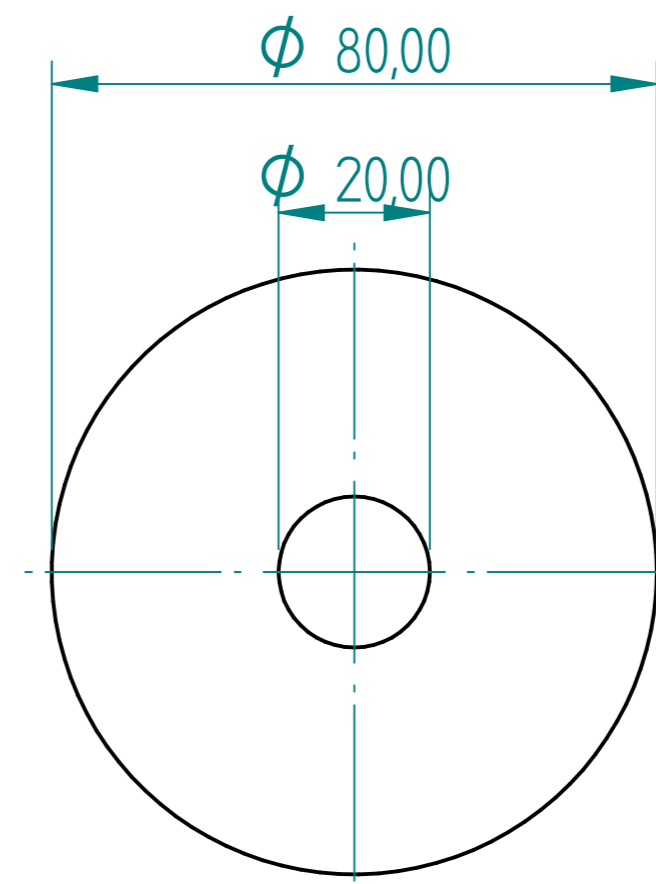
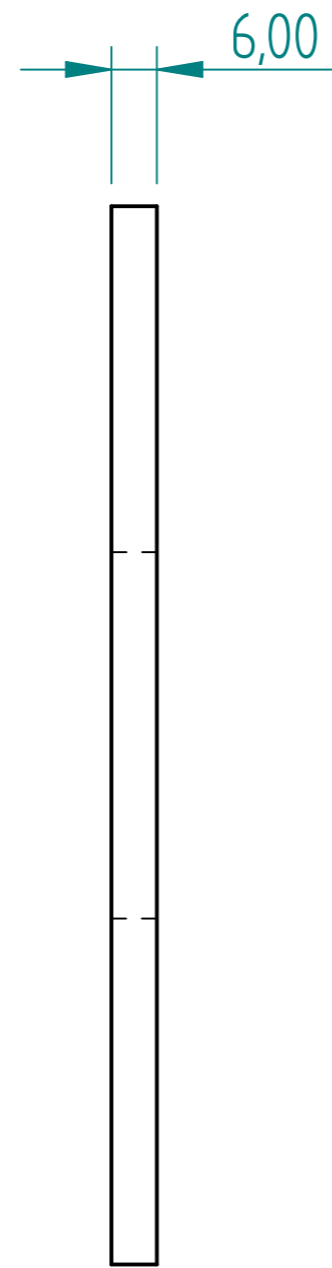


	NAME	DATE	PREMAC	
DRAWN	Dan	08/18/23		
APPROVED			TITLE	
MATERIAL				
TREATMENT			SIZE A4	
UNLESS OTHERWISE SPECIFIED DIMENSIONS ARE IN MILLIMETERS ANGLES ±0.1° <small>1st ANGLE</small>				
2 PL ±0.02 3 PL ±0.005			FILE NAME: Shot Wheel Plates.dft	
SCALE:		WEIGHT:	SHEET 2 OF 10	

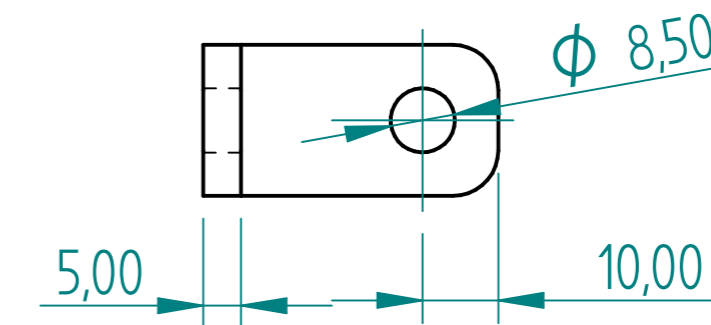
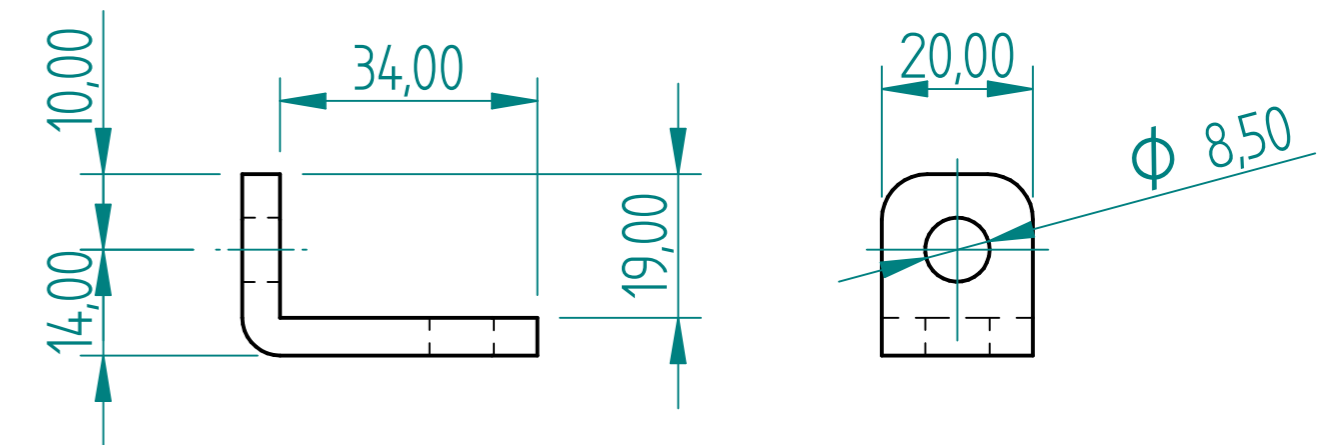
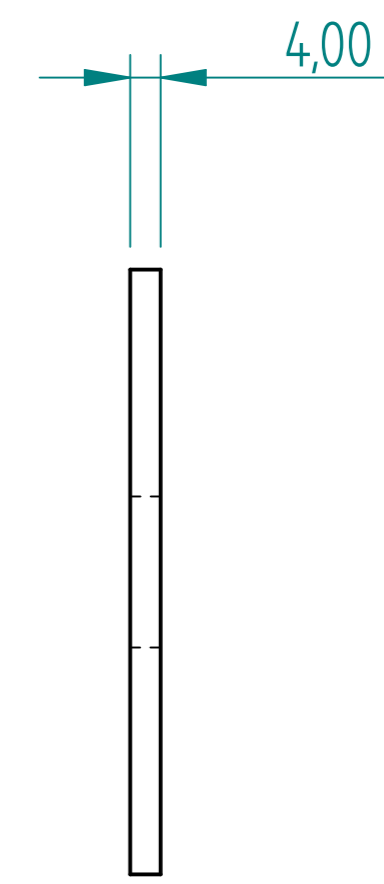
REVISION HISTORY			
REV	DESCRIPTION	DATE	APPROVED



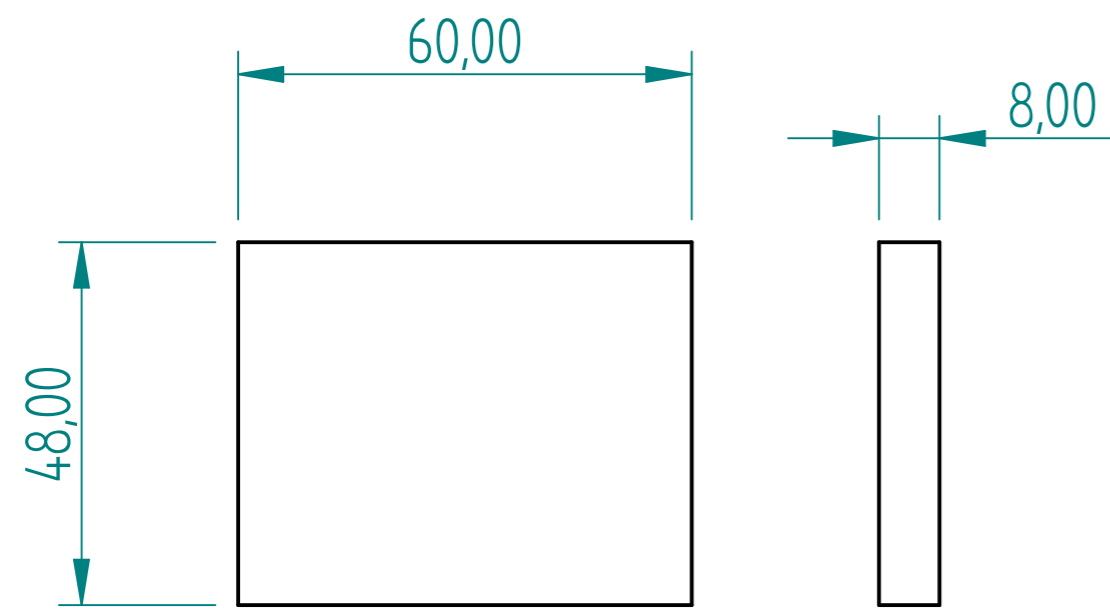
Impeller Front 2 off



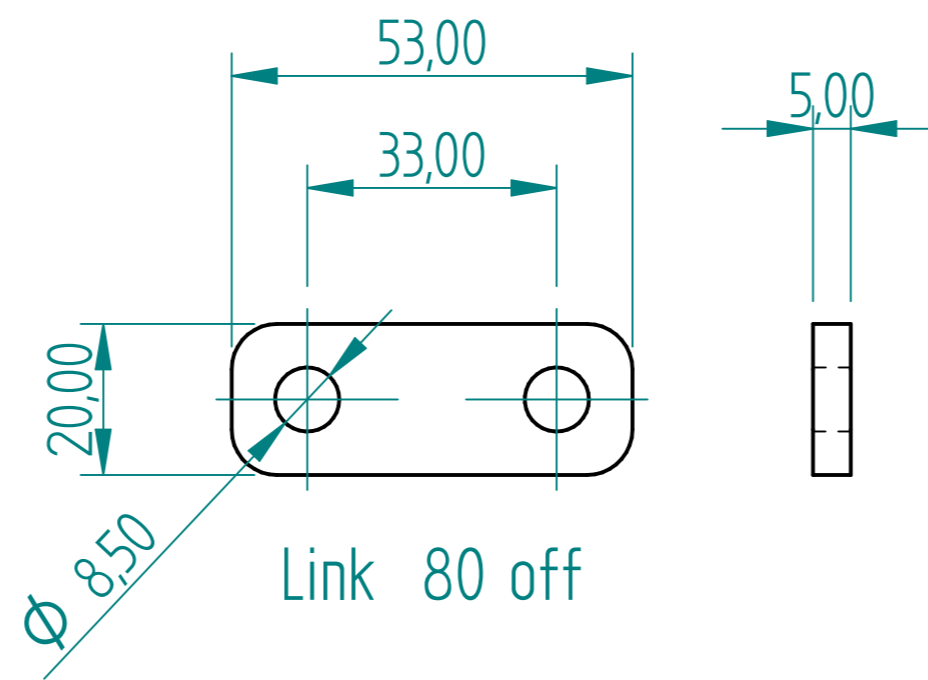
Inlet



Half of the Links bent



Impeller 6 off



Link 80 off

DRAWN		NAME	DATE	PREMAC
APPROVED				
MATERIAL				
TREATMENT				
UNLESS OTHERWISE SPECIFIED DIMENSIONS ARE IN MILLIMETERS ANGLES ±0.1°				SIZE A4
1 ST ANGLE				DWG NO
2 PL ±0.02 3 PL ±0.005				REV
FILE NAME: Shot Wheel Plates.dft				SCALE: WEIGHT: SHEET 3 OF 10