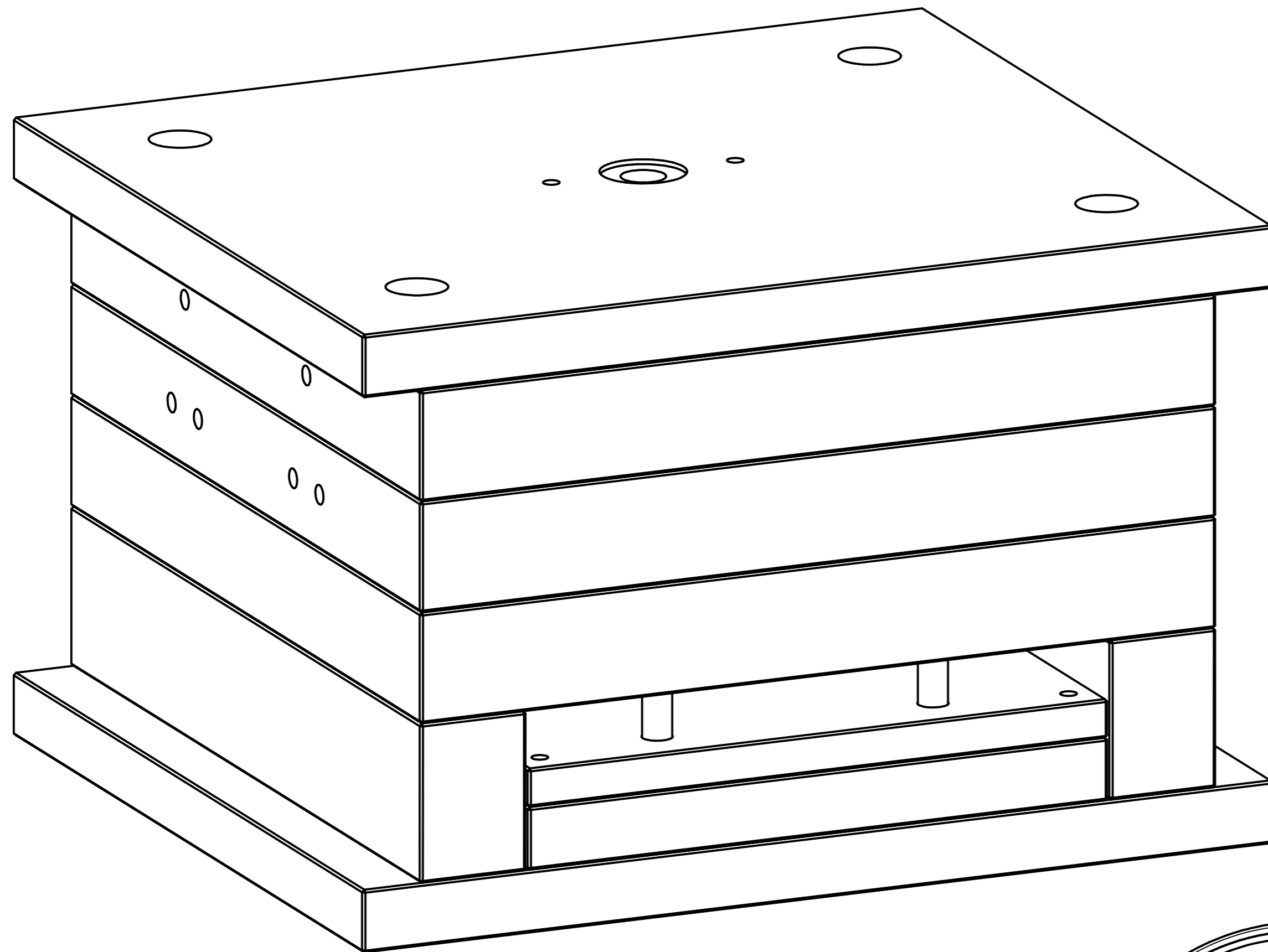
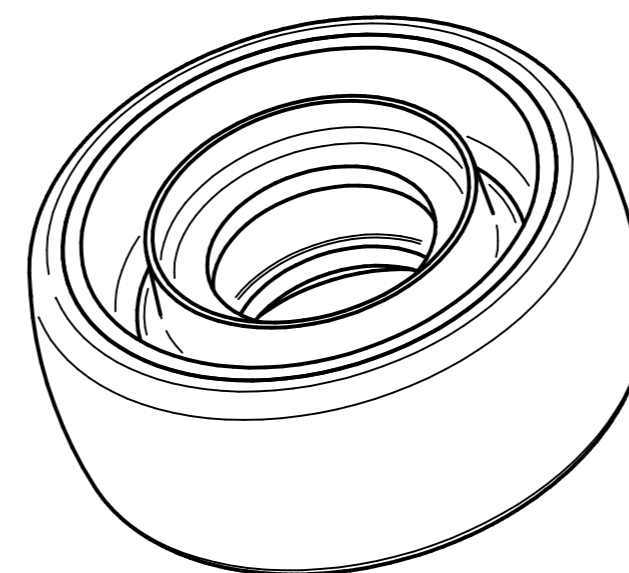


| REVISION HISTORY | | | |
|------------------|-------------|------|----------|
| REV | DESCRIPTION | DATE | APPROVED |
| | | | |



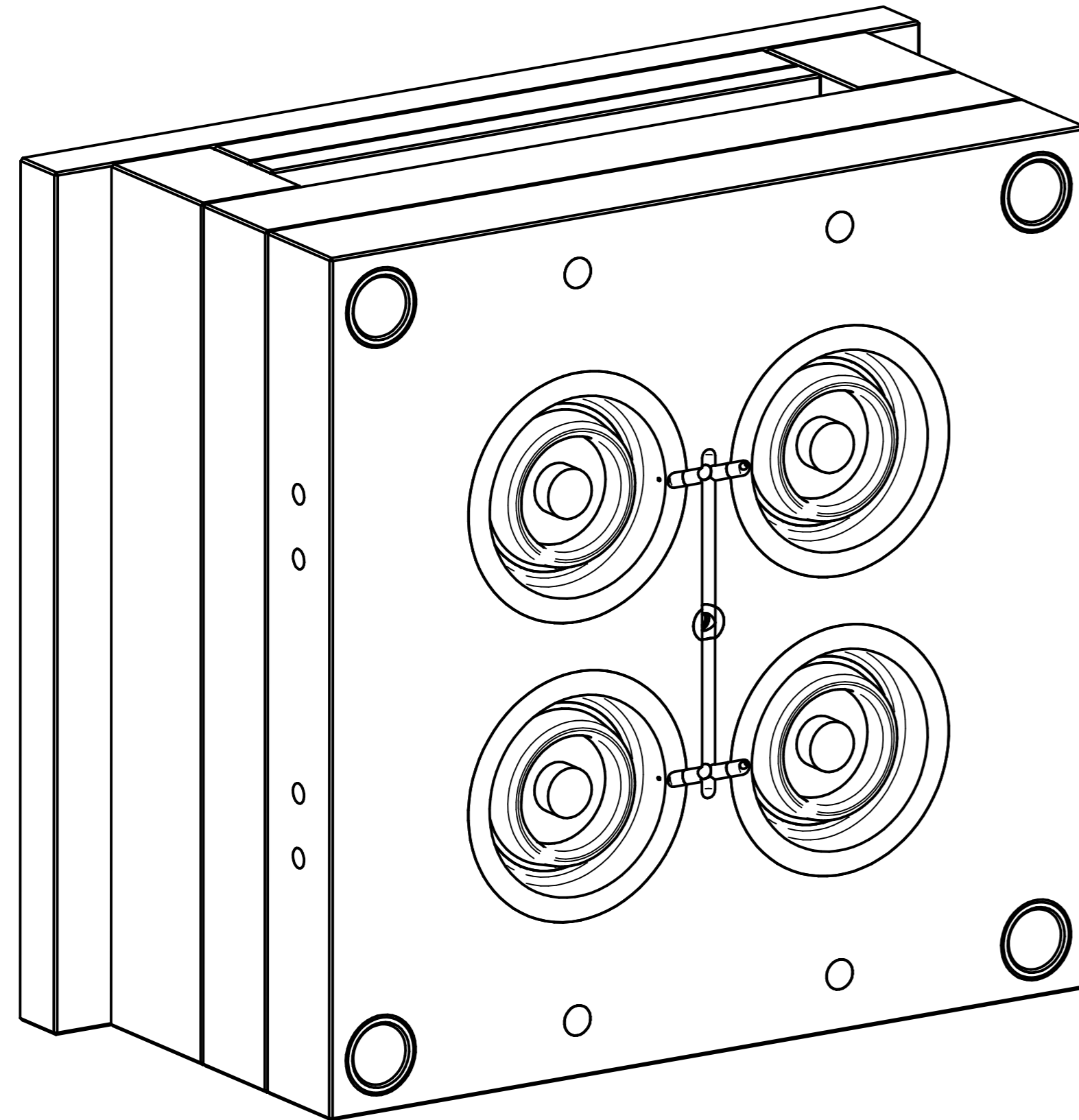
| Item Number | Document Number | Title | Quantity |
|-------------|-----------------|------------------------|----------|
| 1 | 252 x 346 x 16 | Ejector Plate | 1 |
| 2 | 252 x 346 x 26 | Ejector Clamping Plate | 1 |
| 3 | 346 x 346 x 46 | Fixed Die Plate | 1 |
| 4 | 346 x 346 x 46 | Moving Die Plate | 1 |
| 5 | 346 x 346 x 46 | Support Plate | 1 |
| 6 | 396 x 346 x 26 | Fixed Clamping Plate | 1 |
| 7 | 396 x 346 x 26 | Moving Clamping Plate | 1 |
| 8 | 46 x 346 x 66 | Riser | 2 |
| 9 | B3-24 x 51 | Sprue Bush | 1 |
| 10 | Dia 108 x 46 | Outer Insert | 8 |
| 11 | Dia 12 - 160 | Ejector Pin | 4 |
| 12 | Dia 17 - 50 | Spring | 4 |
| 13 | Dia 20 - 150 | Ejector Pin | 4 |
| 14 | Dia 20 x 27.1 | Sprue Puller Bush | 1 |
| 15 | Dia 45 -52 | FH Locating Insert | 4 |
| 16 | Dia 6 - 150 | Ejector Pin | 1 |
| 17 | Dia 6 - 150 | Ejector Pin | 2 |
| 18 | Dia 75 - 44 | FH Inner Insert | 4 |
| 19 | Dia 75 - 44 | MH Inner Insert | 4 |
| 20 | FBN24-46 | Locating Bush | 4 |
| 21 | FSN24-46-46 | Locating Pin | 4 |



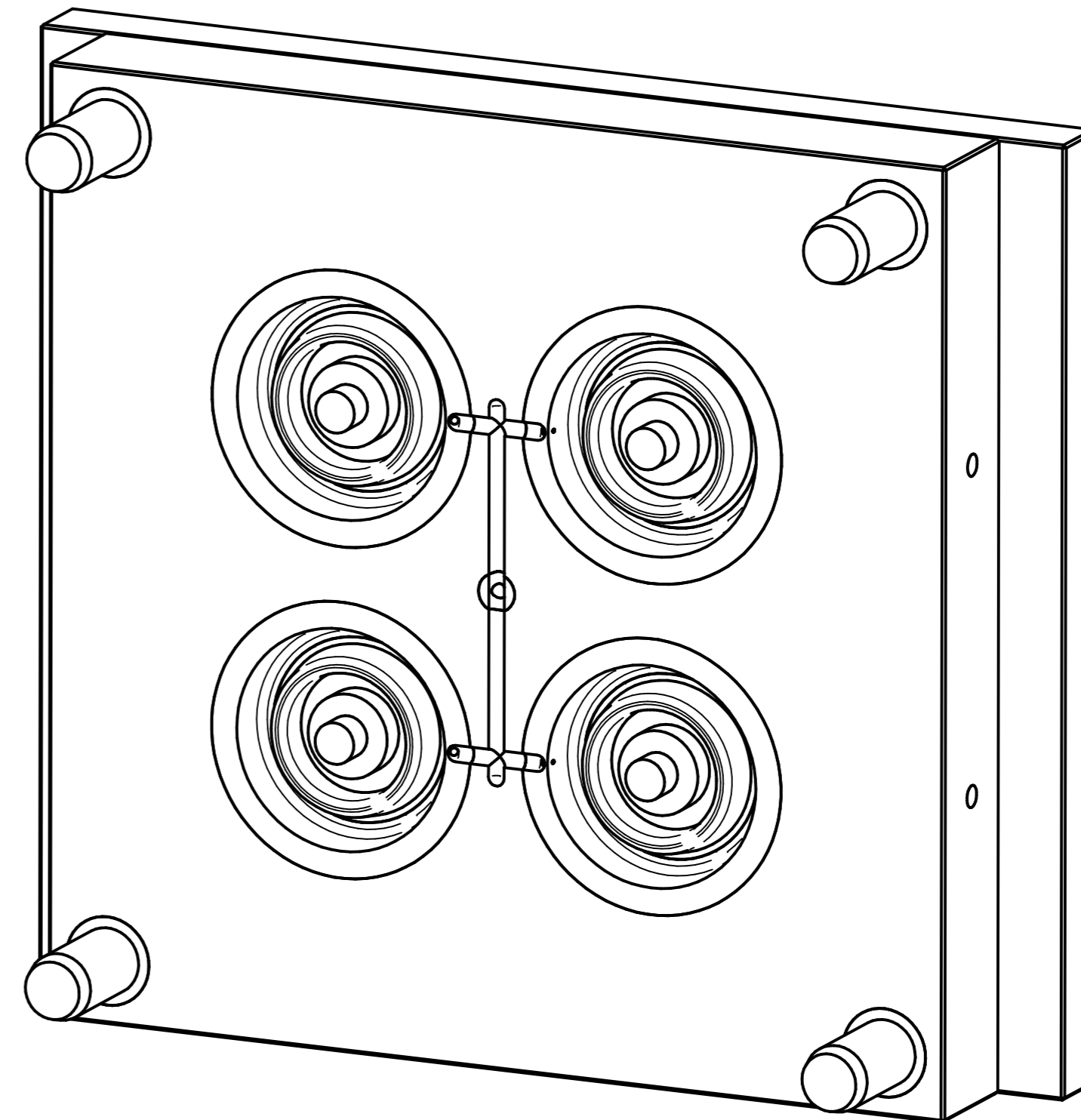
PJP 080X32H45 TYRE MOULD
 3535 MOULD BASE 66 RISER
 4 CAVITY

| | | | | | |
|---|------|----------|---------------------------|-------------------------|--------------|
| | NAME | DATE | PREMAC | | |
| DRAWN | Dan | 02/14/12 | | | |
| APPROVED | | | TITLE Tyre Mould | | |
| MATERIAL | | | | | |
| TREATMENT | | | SIZE A4 | DWG NO PJP 080X32H45 | REV |
| UNLESS OTHERWISE SPECIFIED DIMENSIONS ARE IN MILLIMETERS | | | FILE NAME: Tyre Mould.dft | | |
| 1 st ANGLE ANGLES ±0.1° | | | SCALE: | WEIGHT: | SHEET 1 OF 9 |
| 2 PL ±0.02 3 PL ±0.005 | | | | | |

| REVISION HISTORY | | | |
|------------------|-------------|------|----------|
| REV | DESCRIPTION | DATE | APPROVED |
| | | | |



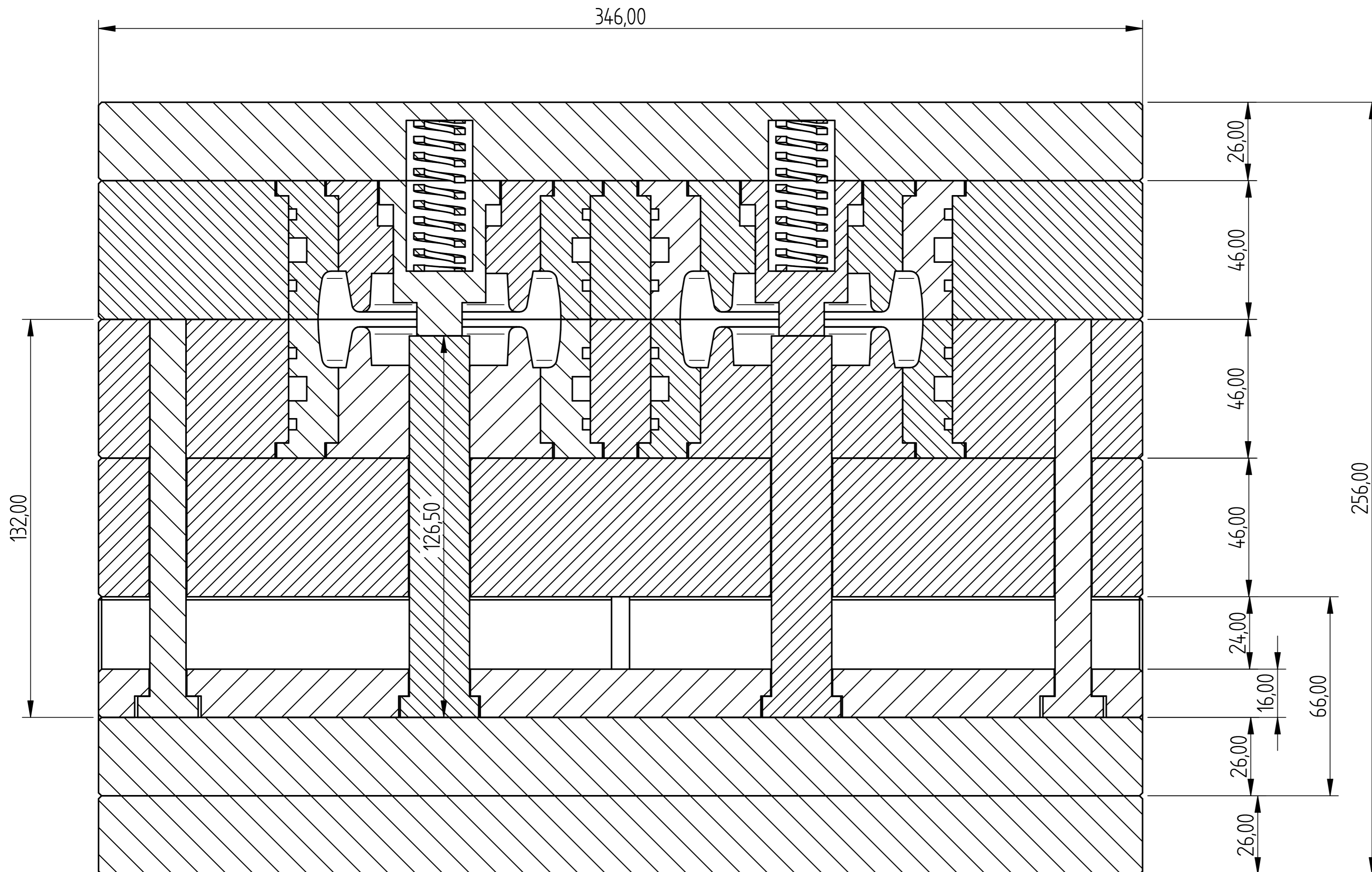
Moving Half
PJP 080X32H45 TYRE MOULD



Fixed Half

| | | | | |
|---|------|----------|---------------------------|-------------------------|
| | NAME | DATE | PREMAC | |
| DRAWN | Dan | 02/14/12 | | |
| APPROVED | | | | |
| MATERIAL | | | TITLE Tyre Mould | |
| TREATMENT | | | | |
| UNLESS OTHERWISE SPECIFIED DIMENSIONS ARE IN MILLIMETERS | | | SIZE A4 | DWG NO PJP 080X32H45 |
| 1 st ANGLE ANGLES ±0.1° | | | FILE NAME: Tyre Mould.dft | |
| 2 PL ±0.02 3 PL ±0.005 | | | SCALE: | WEIGHT: SHEET 2 OF 9 |

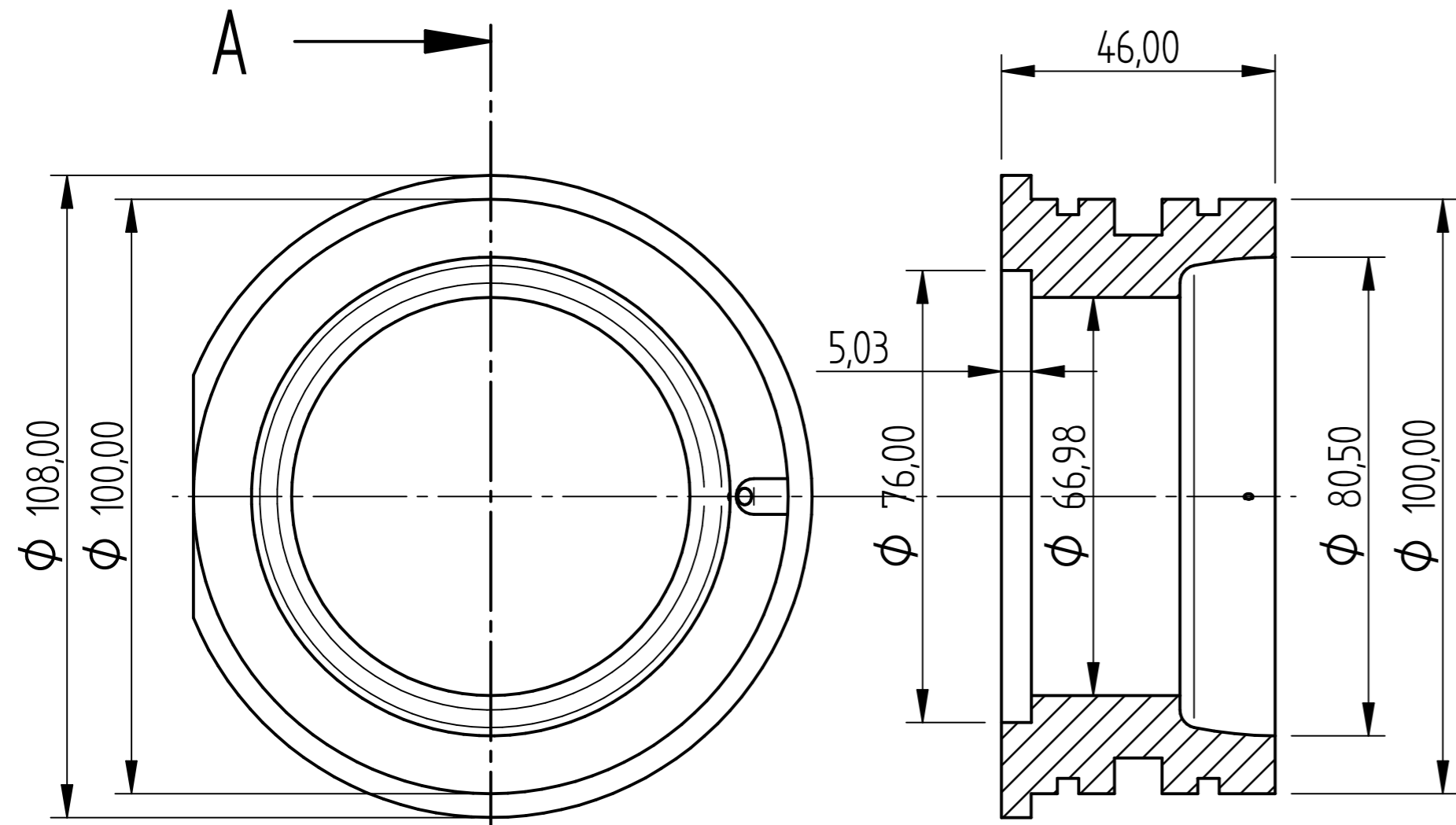
| REVISION HISTORY | | | |
|------------------|-------------|------|----------|
| REV | DESCRIPTION | DATE | APPROVED |
| | | | |



PJP 080X32H45 Tyre Mould

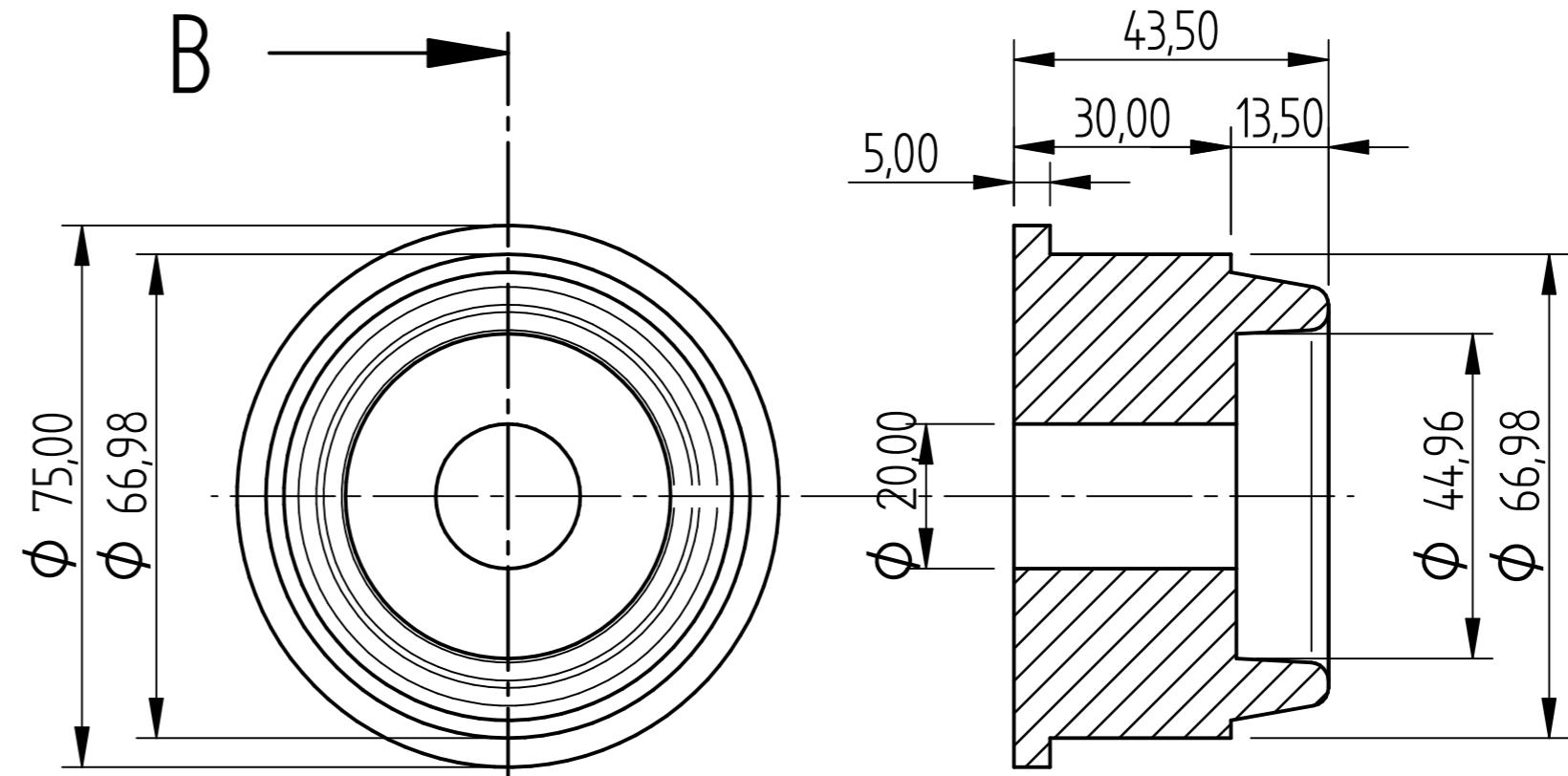
| | | | | | |
|---|------|----------|---------------------------|-------------------------|--------------|
| | NAME | DATE | PREMAC | | |
| DRAWN | Dan | 02/14/12 | | | |
| APPROVED | | | TITLE Tyre Mould | | |
| MATERIAL | | | | | |
| TREATMENT | | | SIZE A4 | DWG NO PJP 080X32H45 | REV |
| UNLESS OTHERWISE SPECIFIED DIMENSIONS ARE IN MILLIMETERS | | | FILE NAME: Tyre Mould.dft | | |
| 1st ANGLE 2 PL ±0.02 3 PL ±0.005 | | | SCALE: | WEIGHT: | SHEET 3 OF 9 |

| REVISION HISTORY | | | |
|------------------|-------------|------|----------|
| REV | DESCRIPTION | DATE | APPROVED |
| | | | |



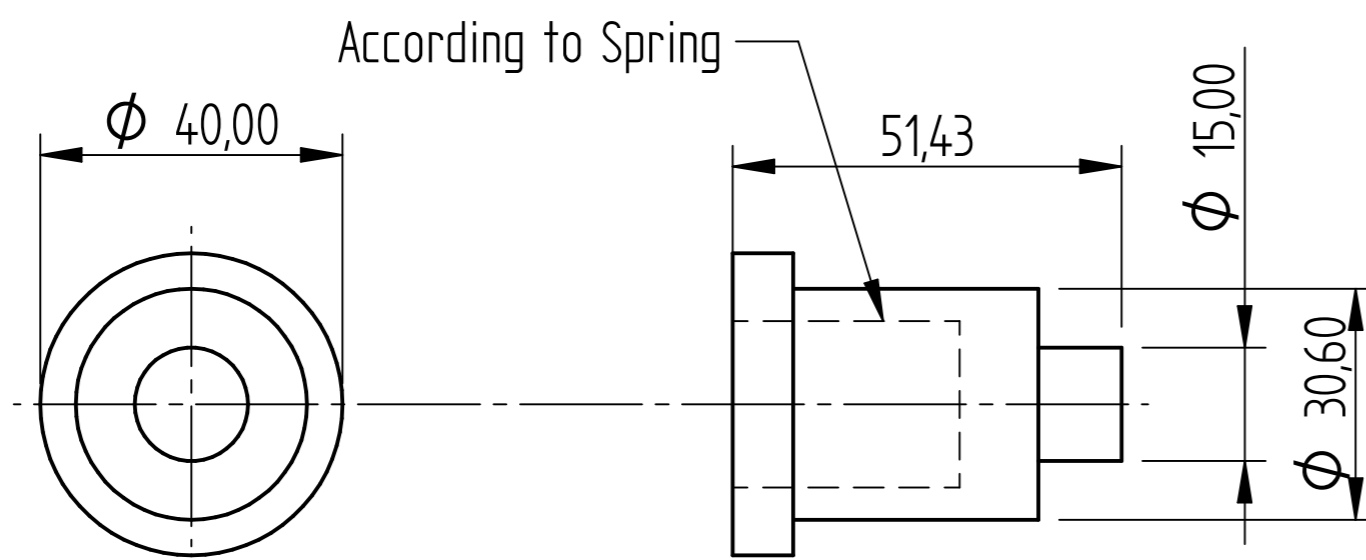
SECTION A-A

Outer Insert 8 OF
BACK TO BACK Dia 110 X 100 4 of

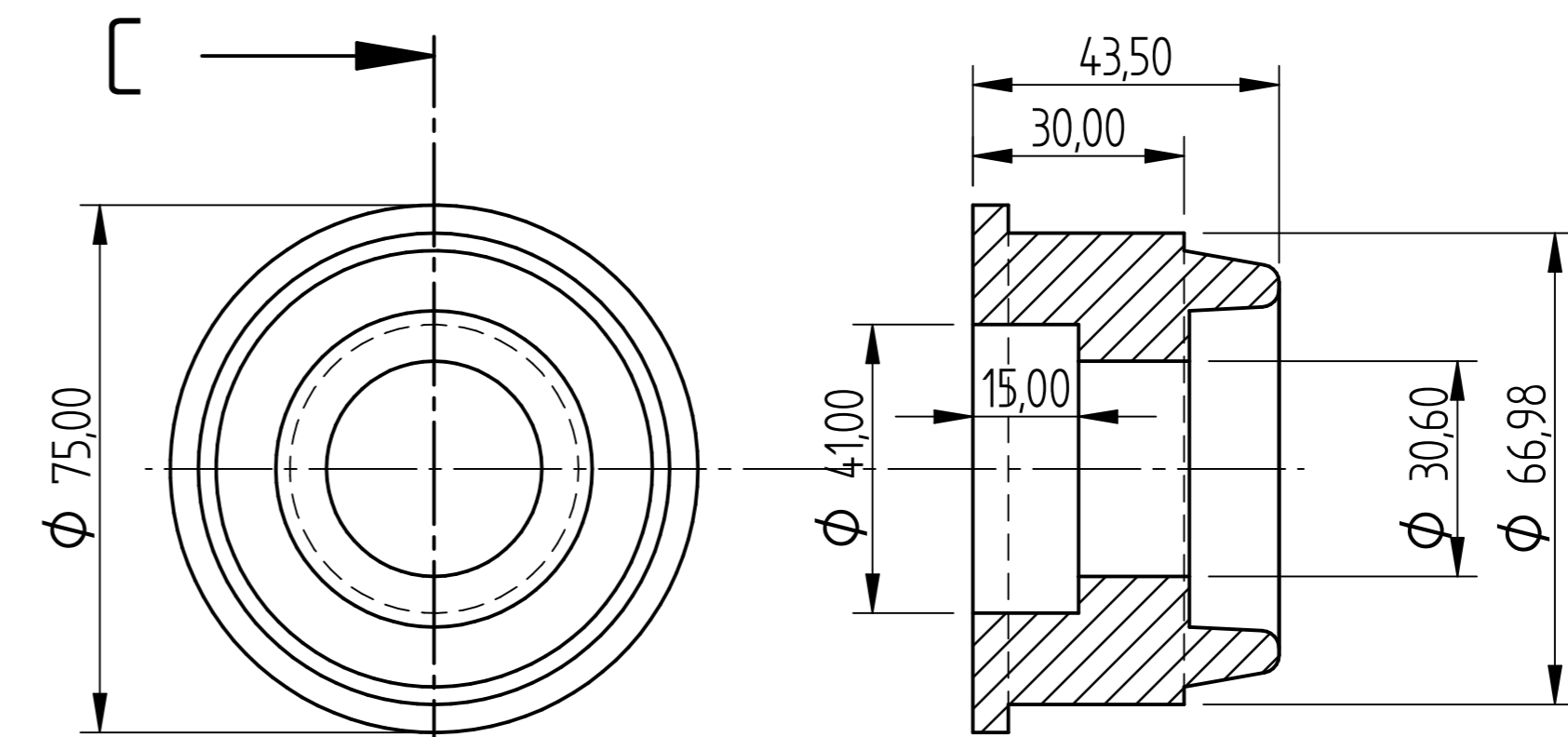


SECTION B-B

MH Inner Insert 4 OF
EACH Dia 75 X 72 4 of



FH Locating Insert 4 OF
Billet Dia 40 X 260 Long

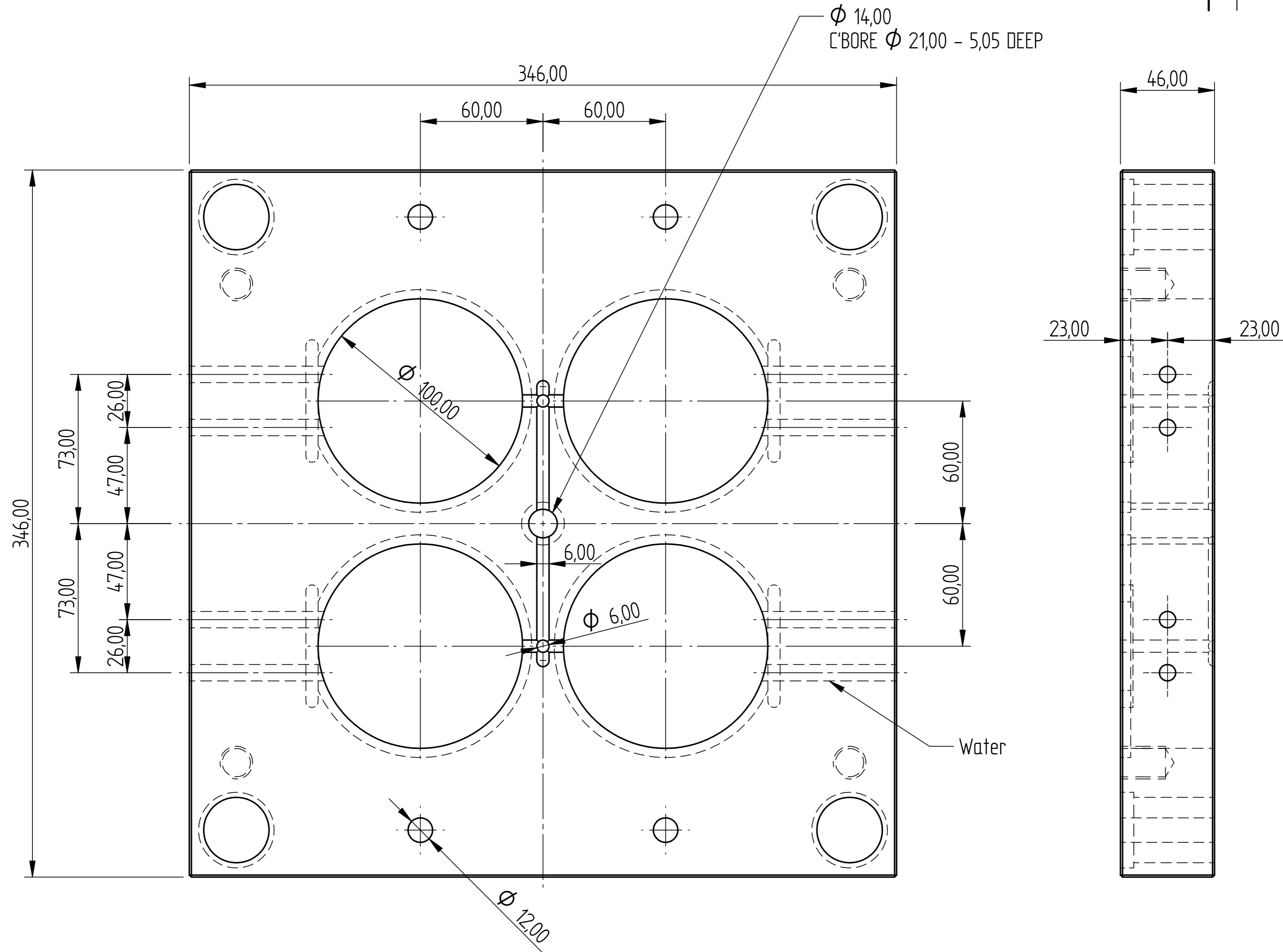


SECTION C-C

FH Inner Insert 4 OF
EACH Dia 75 X 72 4 of

| | | | | |
|---|---------|--------------|----------------|---------------|
| | NAME | DATE | PREMAC | |
| DRAWN | Dan | 02/14/12 | | |
| APPROVED | | | TITLE | |
| MATERIAL | | | Tyre Mould | |
| TREATMENT | | | SIZE | DWG NO |
| UNLESS OTHERWISE SPECIFIED DIMENSIONS ARE IN MILLIMETERS | | | A4 | PJP 080X32H45 |
| 1st ANGLE ANGLES ±0,1° | | | FILE NAME: | REV |
| 2 PL ±0,02 3 PL ±0,005 | | | Tyre Mould.dft | |
| SCALE: | WEIGHT: | SHEET 4 OF 9 | | |

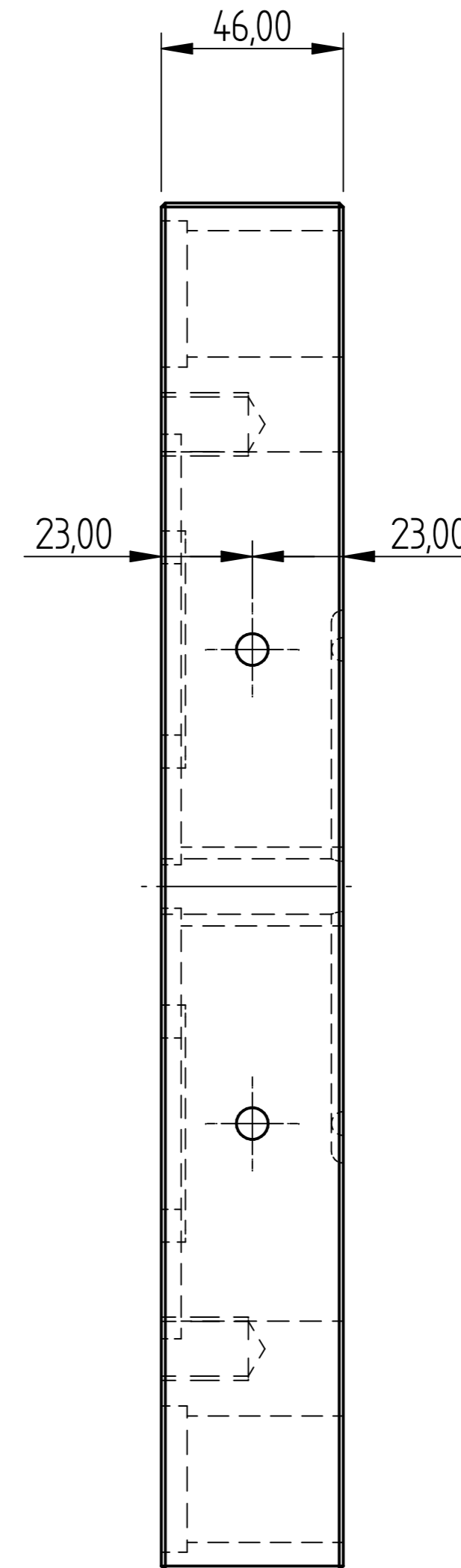
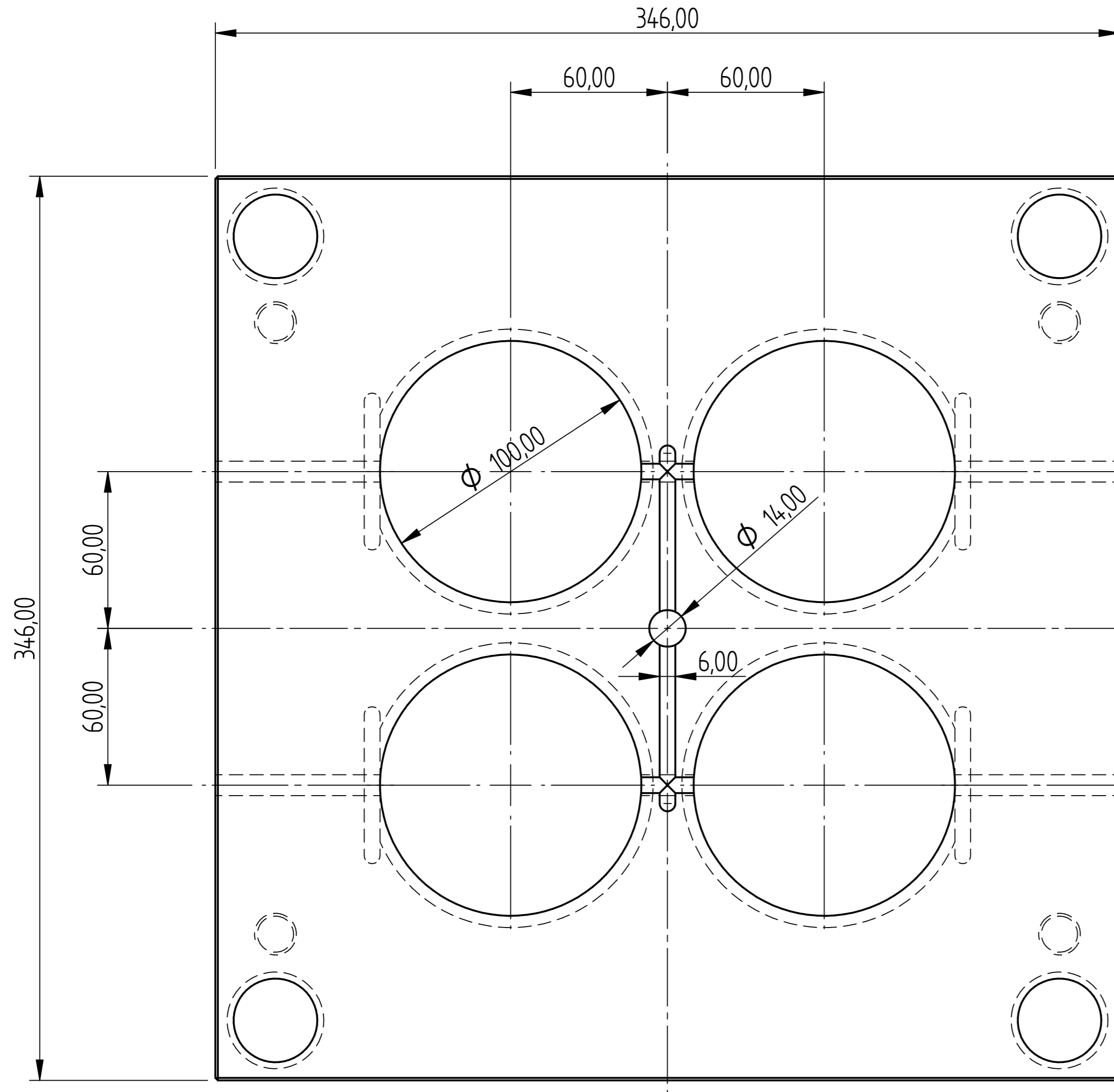
| REVISION HISTORY | | | |
|------------------|-------------|------|----------|
| REV | DESCRIPTION | DATE | APPROVED |
| | | | |



Moving Die Plate

| | | | | |
|---|------|----------|---------------------------|-------------------------|
| DRAWN | NAME | DATE | PREMAC | |
| APPROVED | Dan | 02/14/12 | | |
| MATERIAL | | | | |
| TREATMENT | | | | |
| UNLESS OTHERWISE SPECIFIED DIMENSIONS ARE IN MILLIMETERS | | | SIZE A4 | DWG NO PJP 080X32H45 |
| 1 st ANGLE ANGLES $\pm 0,1^\circ$ | | | FILE NAME: Tyre Mould.dft | REV |
| 2 PL $\pm 0,02$ 3 PL $\pm 0,005$ | | | SCALE: | WEIGHT: |
| | | | SHEET 5 OF 9 | |

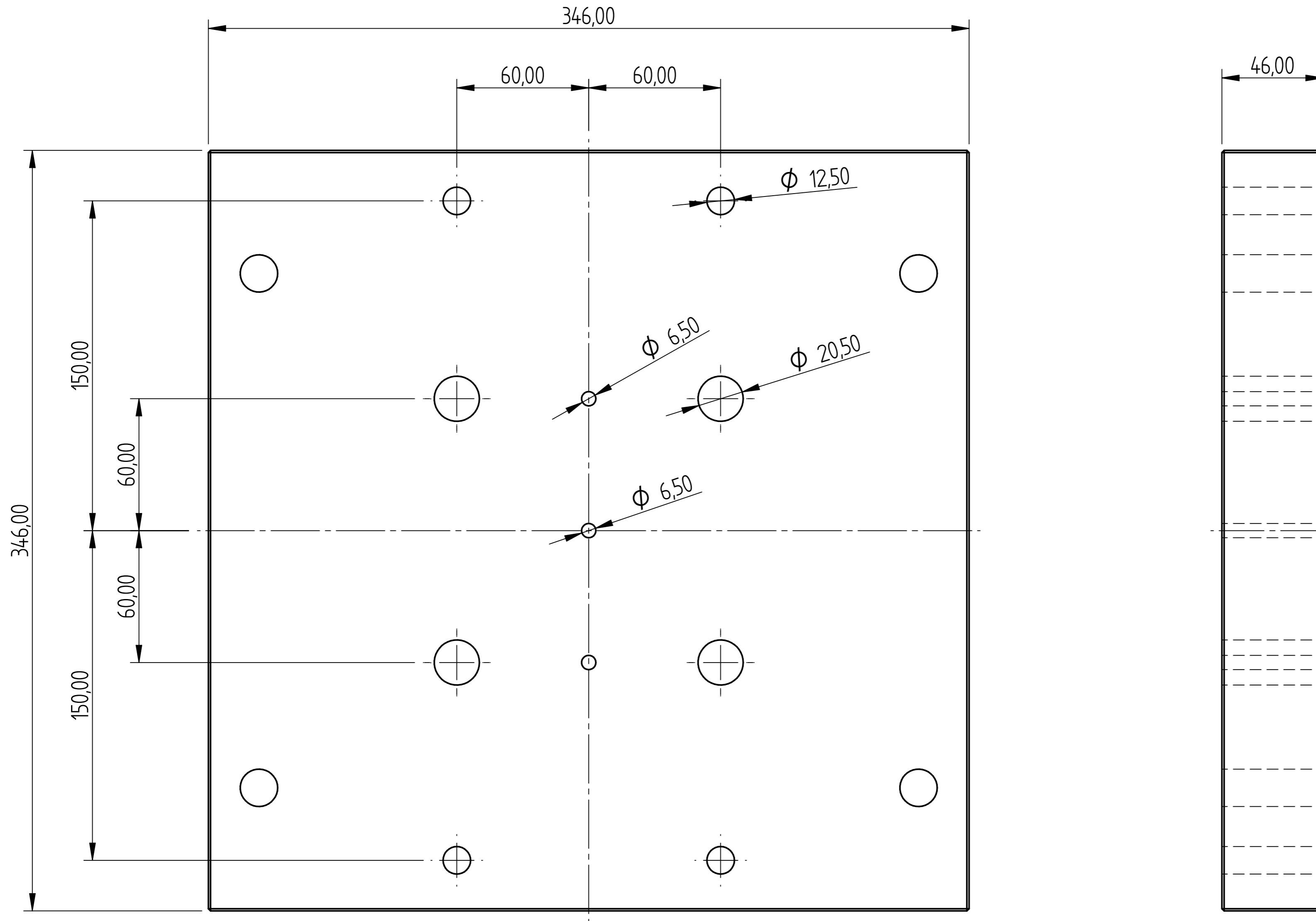
| REVISION HISTORY | | | |
|------------------|-------------|------|----------|
| REV | DESCRIPTION | DATE | APPROVED |
| | | | |



Fixed Die Plate

| | | | | |
|---|------|----------|---------------------------|---------------|
| | NAME | DATE | PREMAC | |
| DRAWN | Dan | 02/14/12 | | |
| APPROVED | | | | |
| MATERIAL | | | | |
| TREATMENT | | | TITLE | Tyre Mould |
| UNLESS OTHERWISE SPECIFIED DIMENSIONS ARE IN MILLIMETERS | | | SIZE | DWG NO |
| 1 st ANGLE | | | A4 | PJP 080X32H45 |
| 2 PL ±0.02 3 PL ±0.005 | | | FILE NAME: Tyre Mould.dft | REV |
| | | | SCALE: | WEIGHT: |
| | | | SHEET 6 OF 9 | |

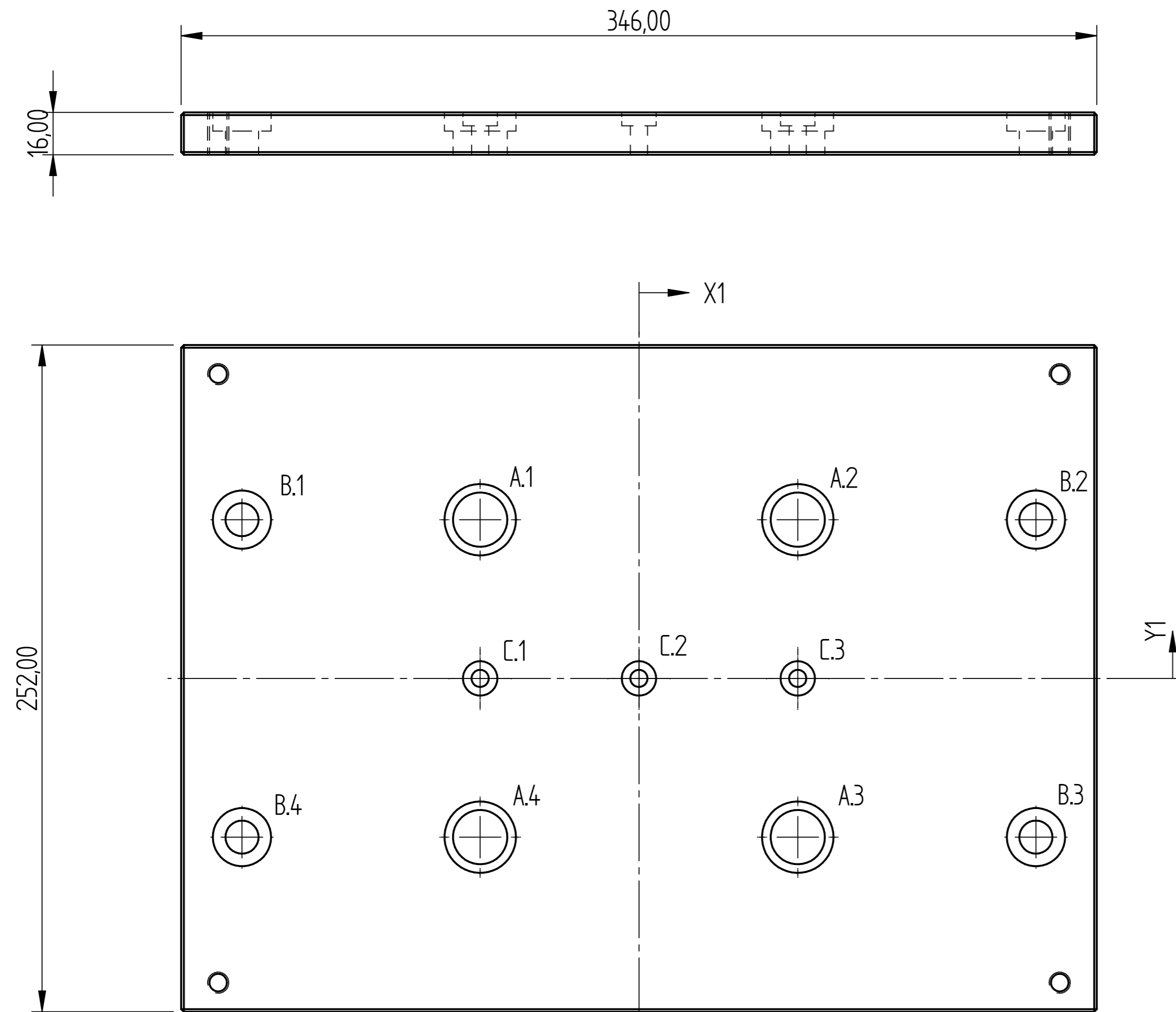
| REVISION HISTORY | | | |
|------------------|-------------|------|----------|
| REV | DESCRIPTION | DATE | APPROVED |
| | | | |



Support Plate

| | | | | | |
|---|------|----------|---------------------------|-------------------------|--------------|
| | NAME | DATE | PREMAC | | |
| DRAWN | Dan | 02/14/12 | | | |
| APPROVED | | | TITLE Tyre Mould | | |
| MATERIAL | | | | | |
| TREATMENT | | | SIZE A4 | DWG NO PJP 080X32H45 | REV |
| UNLESS OTHERWISE SPECIFIED DIMENSIONS ARE IN MILLIMETERS | | | FILE NAME: Tyre Mould.dft | | |
| 1 st ANGLE ANGLES $\pm 0,1^\circ$ | | | SCALE: | WEIGHT: | SHEET 7 OF 9 |
| 2 PL $\pm 0,02$ 3 PL $\pm 0,005$ | | | | | |

| REVISION HISTORY | | | |
|------------------|-------------|------|----------|
| REV | DESCRIPTION | DATE | APPROVED |
| | | | |

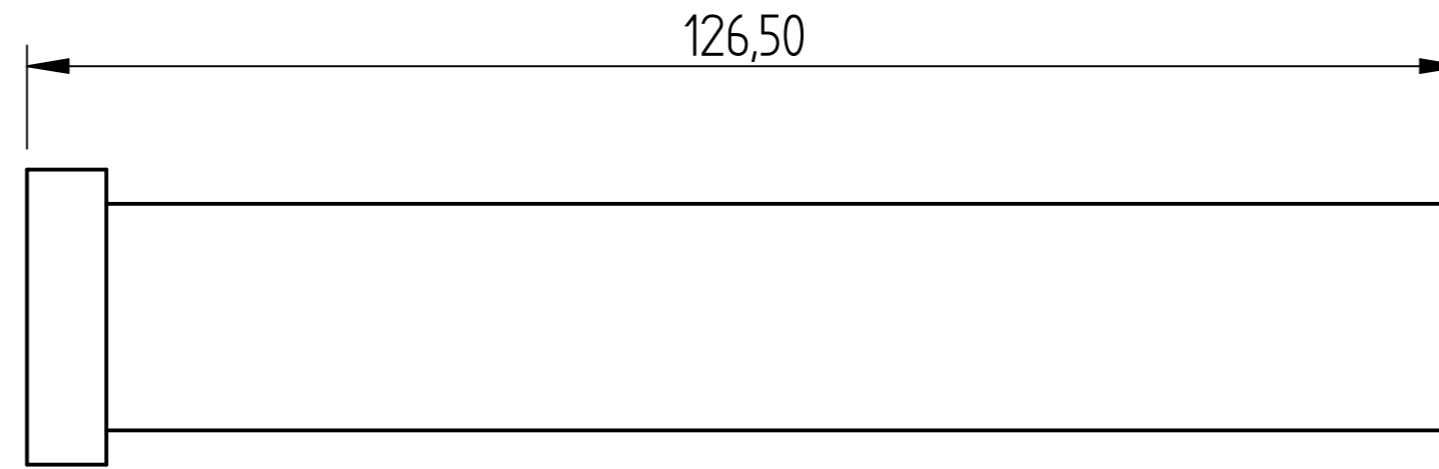
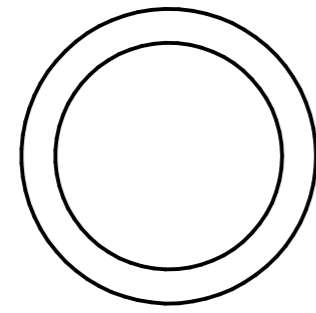


| Hole Table | | | | |
|------------|---------|--------|---------|-------------|
| Hole | X | Y | Size | ∅ / Bore |
| A.1 | -60,00 | 60,00 | ∅ 20,50 | ∅27,00-7,05 |
| A.2 | 60,00 | 60,00 | ∅ 20,50 | ∅27,00-7,05 |
| A.3 | 60,00 | -60,00 | ∅ 20,50 | ∅27,00-7,05 |
| A.4 | -60,00 | -60,00 | ∅ 20,50 | ∅27,00-7,05 |
| B.1 | -150,00 | 60,00 | ∅ 12,50 | ∅22,00-7,05 |
| B.2 | 150,00 | 60,00 | ∅ 12,50 | ∅22,00-7,05 |
| B.3 | 150,00 | -60,00 | ∅ 12,50 | ∅22,00-7,05 |
| B.4 | -150,00 | -60,00 | ∅ 12,50 | ∅22,00-7,05 |
| C.1 | -60,00 | 0,00 | ∅ 6,50 | ∅13,00-5,05 |
| C.2 | 0,00 | 0,00 | ∅ 6,50 | ∅13,00-5,05 |
| C.3 | 60,00 | 0,00 | ∅ 6,50 | ∅13,00-5,05 |

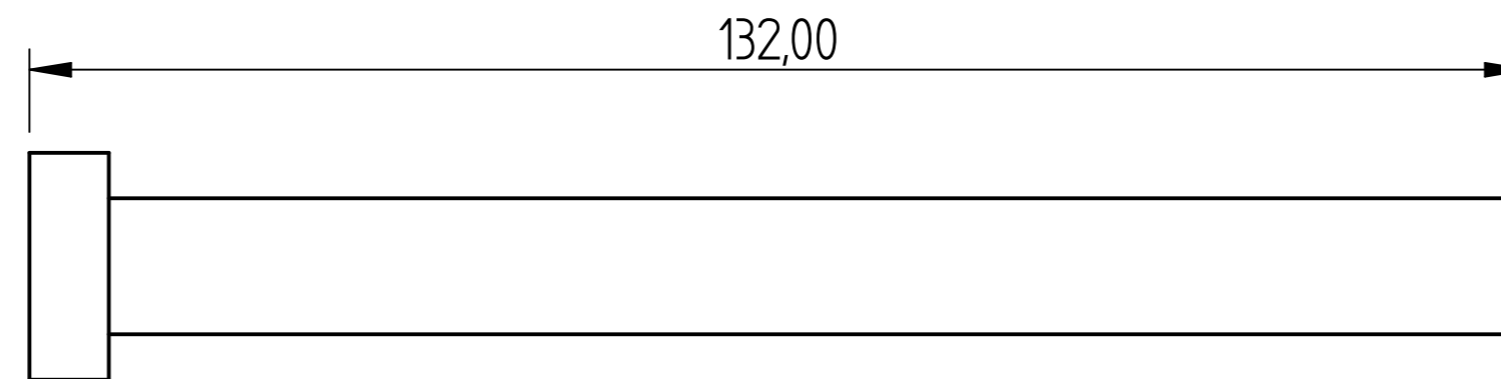
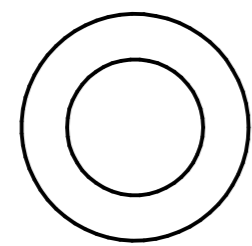
Ejector Plate

| | | | | | |
|---|------|----------|---------------------------|-------------------------|--------------|
| | NAME | DATE | PREMAC | | |
| DRAWN | Dan | 02/14/12 | | | |
| APPROVED | | | TITLE Tyre Mould | | |
| MATERIAL | | | | | |
| TREATMENT | | | SIZE A4 | DWG NO PJP 080X32H45 | REV |
| UNLESS OTHERWISE SPECIFIED DIMENSIONS ARE IN MILLIMETERS | | | FILE NAME: Tyre Mould.dft | | |
| 1 st ANGLE 2 PL ±0.02 3 PL ±0.005 | | | SCALE: | WEIGHT: | SHEET 8 OF 9 |

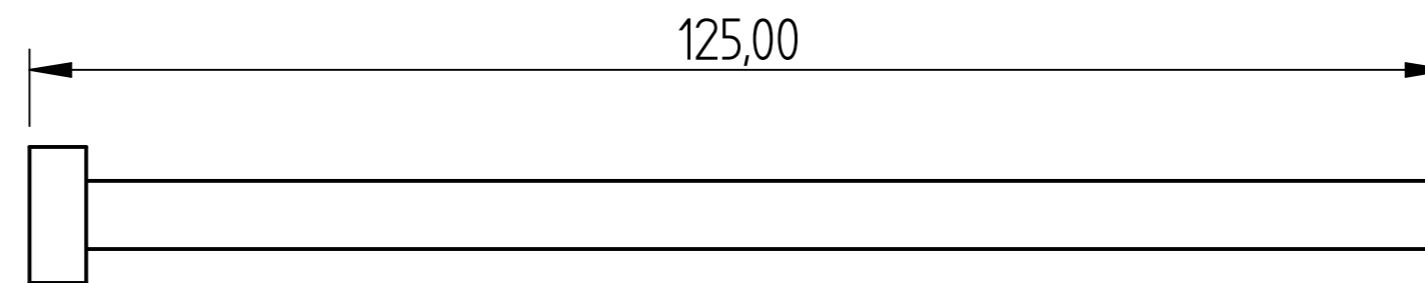
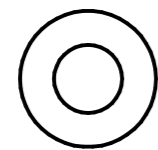
| REVISION HISTORY | | | |
|------------------|-------------|------|----------|
| REV | DESCRIPTION | DATE | APPROVED |
| | | | |



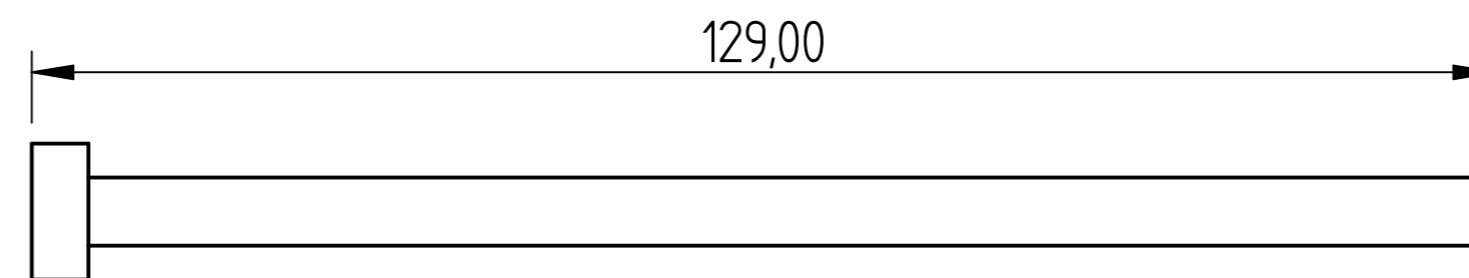
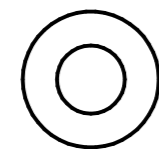
Dia 20 - 150 4 of



Dia 12 - 160 4 of



Dia 6 - 150 1 of



Dia 6 - 150 2 of

| | | | | |
|---|------|----------|---------------------------|-------------------------|
| | NAME | DATE | PREMAC | |
| DRAWN | Dan | 02/14/12 | | |
| APPROVED | | | | |
| MATERIAL | | | | |
| TREATMENT | | | TITLE | Tyre Mould |
| UNLESS OTHERWISE SPECIFIED DIMENSIONS ARE IN MILLIMETERS | | | SIZE A4 | DWG NO PJP 080X32H45 |
| 1 st ANGLE | | | FILE NAME: Tyre Mould.dft | REV |
| 2 PL ±0.02 3 PL ±0.005 | | | SCALE: | WEIGHT: SHEET 9 OF 9 |