

# **PREMAC**

*a division of AGRIGEL (PTY) Ltd. - Co Reg No: 1998/24699/07*

**Manufacturers of Hydraulic Equipment**

P.O. Box 2892  
Delmas, 2210  
Mpumalanga  
Telephone: 013 668 0000  
Facsimile: 086 659 8207  
Email: [info@premac.co.za](mailto:info@premac.co.za)  
VAT No: 4810183410

[www.premac.co.za](http://www.premac.co.za)

# **VALVE RANGE**

Premac manufactures stack-type directional control valves that are equivalent to Gresen/Parker and Commercial valves. Premac has been manufacturing these valves locally in South Africa since 1989 and has proven its reliability, offering an extensive range of combinations and options to suit every requirement.

The range offers several safety features such as built-in main relief, anti-cavitation checks, load holding checks and port relief cartridges. These valves are manufactured to the highest specifications using the best material available to ensure a lasting good quality product.

Premac's range offers valves with capacity's ranging from 75 litres per minute through to 200 litres per minute. Each valves' specifications are detailed below.

# V75 VALVE RANGE

---

## SPECIFICATIONS:

Capacity: 75 Litres/min

Working pressure: 240 Bar

Number of spools available: 9 sections

Spool options: 3 Way 3 Position

4 Way 3 Position

4 Way 4 Position Float

4 Way 3 Position Free Flow (Motor)

Actuator: Spring centered to neutral

3 Position Detent

2 Position Detent

Hydraulic Remote

Main Relief: Differential Pressure Poppet

Miscellaneous: Power Beyond

Open Centre

Closed Centre

Work Port Relief

Work Port Anti-Cavitation Check

Mid-inlet

Inlet Cover

SAE12



Work Section

SAE10



Outlet Cover

SAE12



# V150 VALVE RANGE

---

## SPECIFICATIONS:

- Capacity: 150 Litres/min  
Working pressure: 210 Bar  
Number of spools available: 9 sections  
Spool options: 3 Way 3 Position  
4 Way 3 Position  
4 Way 4 Position Float  
4 Way 4 Position Regenerative  
4 Way 3 Position Free Flow (Motor)
- Actuator: Spring centered to neutral  
3 Position Detent  
2 Position Detent  
Hydraulic Remote
- Main Relief: Differential Pressure Poppet
- Miscellaneous: Power Beyond  
Open Centre  
Closed Centre  
Conversion Plug  
Load Holding Check  
Work Port Relief  
Work Port Anti-Cavitation Check

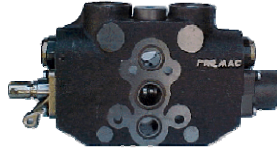
### Inlet Cover

SAE 16 or 20



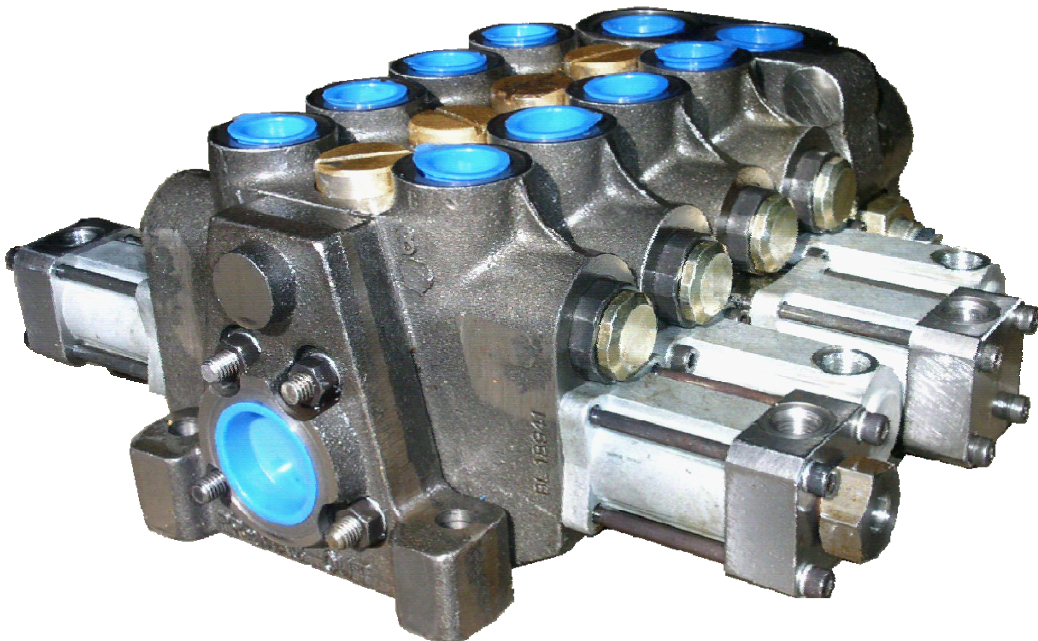
### Work Section

SAE 12 or 16



### Outlet Cover

SAE 20



# V200 VALVE RANGE

---

## SPECIFICATIONS:

Capacity: 200 Litres/min  
Working pressure: 210 Bar  
Number of spools available: 8 sections  
Actuator: Spring centered to neutral  
3 Position Detent  
2 Position Detent  
Hydraulic Remote  
Main Relief: Differential Pressure Poppet  
Miscellaneous: Power Beyond  
Open Centre  
Closed Centre  
Conversion Plug  
Load Holding Check  
Work Port Relief  
Work Port Anti-Cavitation Check

Inlet Cover  
SAE 20



Work Section  
SAE 16



Outlet Cover  
SAE 20

